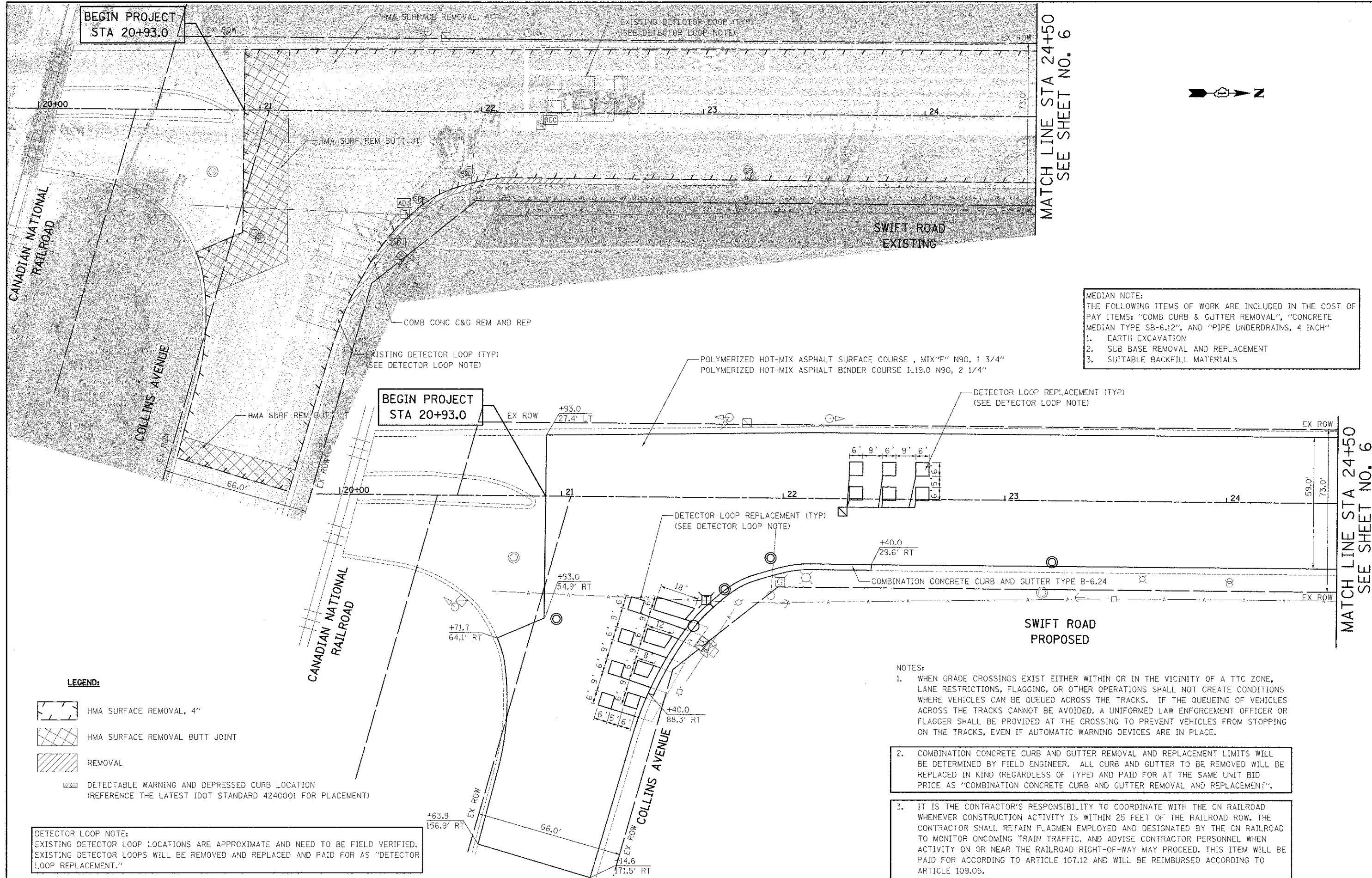


DATE	
BY	
REVISION	
NO.	
DATE	
BY	
REVISION	
NO.	
DATE	
BY	
REVISION	
NO.	

DATE	
BY	
REVISION	
NO.	
DATE	
BY	
REVISION	
NO.	
DATE	
BY	
REVISION	
NO.	



BEGIN PROJECT
STA 20+93.0

BEGIN PROJECT
STA 20+93.0

MATCH LINE STA 24+50
SEE SHEET NO. 6

MATCH LINE STA 24+50
SEE SHEET NO. 6

MEDIAN NOTE:
THE FOLLOWING ITEMS OF WORK ARE INCLUDED IN THE COST OF PAY ITEMS: "COMB CURB & GUTTER REMOVAL", "CONCRETE MEDIAN TYPE SB-6.12", AND "PIPE UNDERDRAINS, 4 INCH"
1. EARTH EXCAVATION
2. SLB BASE REMOVAL AND REPLACEMENT
3. SUITABLE BACKFILL MATERIALS

LEGEND:

- HMA SURFACE REMOVAL, 4"
- HMA SURFACE REMOVAL BUTT JOINT
- REMOVAL
- DETECTABLE WARNING AND DEPRESSED CURB LOCATION (REFERENCE THE LATEST IDOT STANDARD 4240001 FOR PLACEMENT)

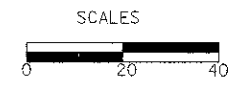
DETECTOR LOOP NOTE:
EXISTING DETECTOR LOOP LOCATIONS ARE APPROXIMATE AND NEED TO BE FIELD VERIFIED. EXISTING DETECTOR LOOPS WILL BE REMOVED AND REPLACED AND PAID FOR AS "DETECTOR LOOP REPLACEMENT."

- NOTES:**
- WHEN GRADE CROSSINGS EXIST EITHER WITHIN OR IN THE VICINITY OF A TTC ZONE, LANE RESTRICTIONS, FLAGGING, OR OTHER OPERATIONS SHALL NOT CREATE CONDITIONS WHERE VEHICLES CAN BE QUEUED ACROSS THE TRACKS. IF THE QUEUEING OF VEHICLES ACROSS THE TRACKS CANNOT BE AVOIDED, A UNIFORMED LAW ENFORCEMENT OFFICER OR FLAGGER SHALL BE PROVIDED AT THE CROSSING TO PREVENT VEHICLES FROM STOPPING ON THE TRACKS, EVEN IF AUTOMATIC WARNING DEVICES ARE IN PLACE.
 - COMBINATION CONCRETE CURB AND GUTTER REMOVAL AND REPLACEMENT LIMITS WILL BE DETERMINED BY FIELD ENGINEER. ALL CURB AND GUTTER TO BE REMOVED WILL BE REPLACED IN KIND (REGARDLESS OF TYPE) AND PAID FOR AT THE SAME UNIT BID PRICE AS "COMBINATION CONCRETE CURB AND GUTTER REMOVAL AND REPLACEMENT".
 - IT IS THE CONTRACTOR'S RESPONSIBILITY TO COORDINATE WITH THE CN RAILROAD WHENEVER CONSTRUCTION ACTIVITY IS WITHIN 25 FEET OF THE RAILROAD ROW. THE CONTRACTOR SHALL RETAIN FLAGMEN EMPLOYED AND DESIGNATED BY THE CN RAILROAD TO MONITOR ONCOMING TRAIN TRAFFIC, AND ADVISE CONTRACTOR PERSONNEL WHEN ACTIVITY ON OR NEAR THE RAILROAD RIGHT-OF-WAY MAY PROCEED. THIS ITEM WILL BE PAID FOR ACCORDING TO ARTICLE 107.12 AND WILL BE REIMBURSED ACCORDING TO ARTICLE 109.05.

CIVILTECH
450 E Devon Ave, Suite 300
Itasca, Illinois 60143
Tel: 630.773.3900 Fax: 630.773.3975
www.civiltechinc.com

DESIGNED - PK	REVISED - 2/12/2013
DRAWN - JRR	REVISED -
CHECKED - RTM	REVISED -
DATE - 2/4/2013	REVISED -

**STATE OF ILLINOIS
DEPARTMENT OF TRANSPORTATION**



ROADWAY PLANS - SWIFT ROAD

SHEET NO. 1 OF 9 SHEETS STA. 20+93 TO STA. 24+50

F.A.U. RTE.	SECTION	COUNTY	TOTAL SHEETS	SHEET NO.
2586	12-0C101-00-RS	DUPAGE	31	5
CONTRACT NO. 63796				
FED. ROAD DIST. NO. 1 ILLINOIS FED. AID PROJECT				