

F.A.U. RTE	SECTION	COUNTY	TOTAL SHEETS	SHEET NO
2571	09-00053-00-BR	WILL	25	1
		ILLINOIS	CONTRACT NO 63797	

PROJECT LOCATED IN VILLAGE OF BOLINGBROOK

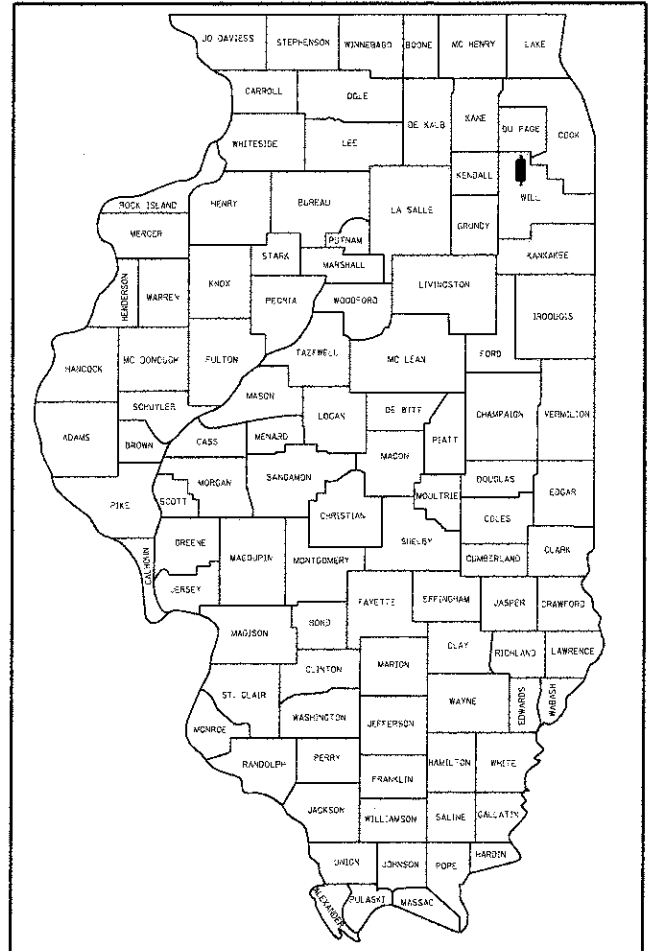
STATE OF ILLINOIS
DEPARTMENT OF TRANSPORTATION
DIVISION OF HIGHWAYS

PROPOSED HIGHWAY PLANS

FAU 2571 (SCHMIDT ROAD)
AT LILY CACHE CREEK
CULVERT REPLACEMENT
SECTION: 09-00053-00-BR
PROJECT: BRM-9003(520)
VILLAGE OF BOLINGBROOK
WILL COUNTY
C-91-147-10

INDEX OF SHEETS

- 1 COVER SHEET
- 2 GENERAL NOTES
- 3 SUMMARY OF QUANTITIES
- 4-5 TYPICAL SECTIONS
- 6 ALIGNMENT AND TIES
- 7 EXISTING REMOVAL PLAN AND PROFILE
- 8 PROPOSED PLAN AND PROFILE
- 9 MAINTENANCE OF TRAFFIC PLAN
- 10 DETOUR PLAN
- 11 DRAINAGE AND UTILITY PLAN AND PROFILE
- 12 PLAT OF EASEMENT
- 13 EROSION CONTROL PLAN
- 14 PAVEMENT MARKING AND LANDSCAPING PLAN
- 15-16 BRIDGE PLANS
- 17 CONCRETE COLLAR DETAILS
- 18 SOIL BORING
- 19 EROSION CONTROL DETAILS
- 20-25 DISTRICT ONE DETAILS



LOCATION OF SECTION INDICATED THIS: -

STATE OF ILLINOIS
DEPARTMENT OF TRANSPORTATION
DIVISION OF HIGHWAYS

APPROVED February 20 13
Michael D. Drew
VILLAGE OF BOLINGBROOK, VILLAGE ENGINEER

PASSED 2/24 2013
C. J. Holt
DISTRICT 1 ENGINEER OF LOCAL ROADS & STREETS

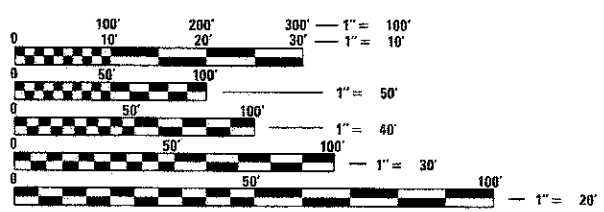
RELEASING FOR BID BASED ON LIMITED REVIEW February 28 2013
John F. ...
DEPUTY DIRECTOR OF HIGHWAYS, REGION 1 ENGINEER

PRINTED BY THE AUTHORITY OF THE STATE OF ILLINOIS

PROGRAM AND OFFICE ENGINEER: CHARLES F. RIDDLE (847) 705-4406

DESIGN DESIGNATION

MAJOR COLLECTOR
SPEED LIMIT = 30 MPH
TRAFFIC = 6,200 ADT (2010)



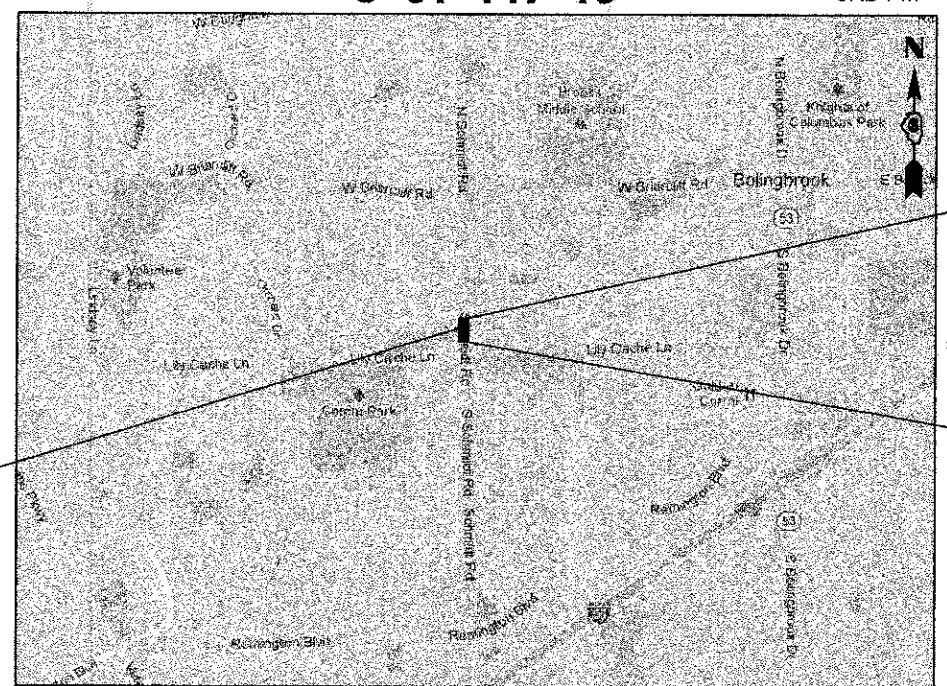
FULL SIZE PLANS HAVE BEEN PREPARED USING STANDARD ENGINEERING SCALES. REDUCED SIZED PLANS WILL NOT CONFORM TO STANDARD SCALES. IN MAKING MEASUREMENTS ON REDUCED PLANS, THE ABOVE SCALES MAY BE USED.

J.U.L.I.E.
JOINT UTILITY LOCATION INFORMATION FOR EXCAVATION
1-800-892-0123
OR 811

PROJECT MANAGER: MARK REZNICEK

CONTRACT NO. 63797

SN: 099-6055
STA.: 14 + 54



PROJECT ENDS
STA.: 15 + 90

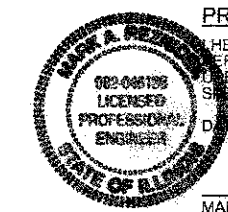
PROJECT BEGINS
STA.: 13 + 09

LOCATION MAP

GROSS LENGTH = 281 FT. = 0.053 MILE
NET LENGTH = 281 FT. = 0.053 MILE



ESI CONSULTANTS, LTD
1974 NORTH MILL STREET
NAPERVILLE, IL 60563
(630) 420-1700
WWW.ESICONSULTANTS.LTD.COM
ILLINOIS DEPARTMENT OF PROFESSIONAL REGULATION REGISTRATION #184-003685
** THIS DOCUMENT IS THE PROPERTY OF ESI CONSULTANTS, LTD, AND NO PART HEREIN SHALL BE USED **
EXCEPT FOR THIS SPECIFIC PROJECT WITHOUT THE WRITTEN CONSENT OF ESI CONSULTANTS, LTD.



PROFESSIONAL ENGINEER'S CERTIFICATION
HEREBY CERTIFY THAT THIS SUBMISSION WAS PREPARED UNDER MY PERSONAL DIRECTION. THIS TECHNICAL SUBMISSION IS INTENDED TO BE USED AS AN INTEGRAL PART OF AND IN CONJUNCTION WITH THE PROJECT SPECIFICATIONS AND CONTRACT DOCUMENTS.
DATED THIS 4TH DAY OF February, 2013
Mark A. Reznicek
MARK A. REZNICEK
ILLINOIS REG. PROF. ENGINEER NO.082-048136 EXPIRATION DATE 11-30-2013