

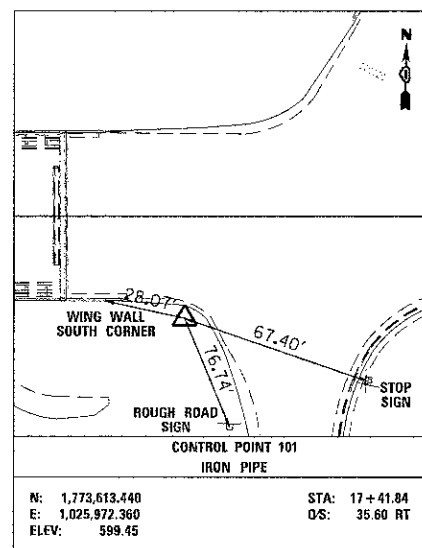
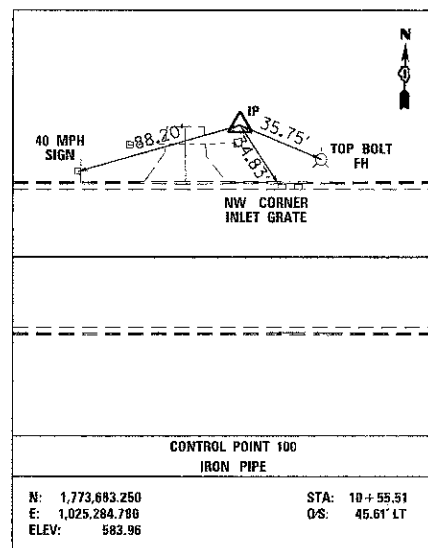
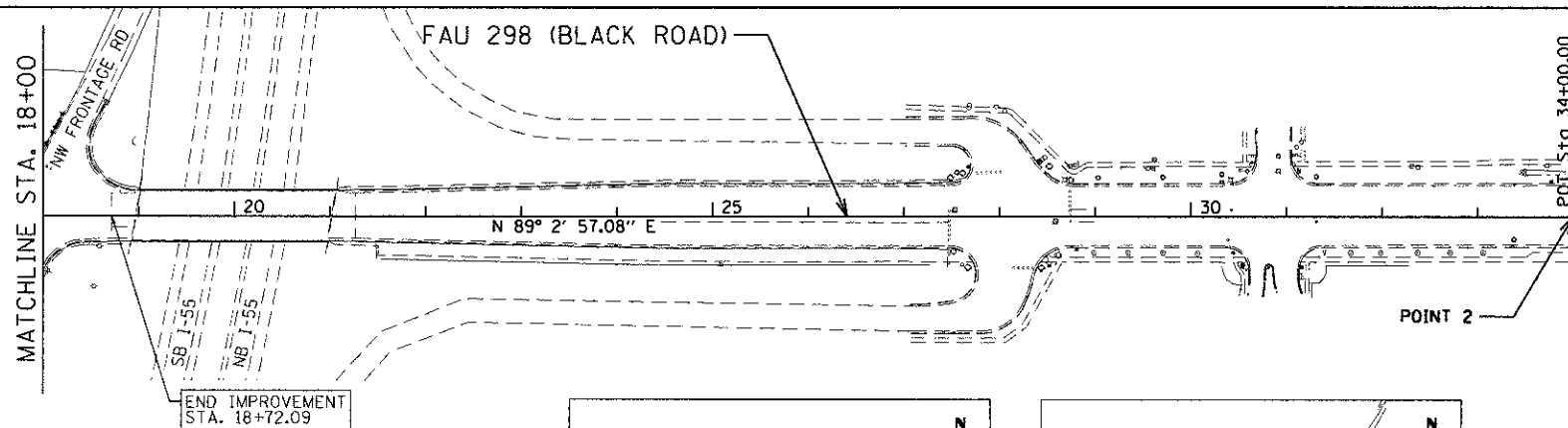
PROJECT COORDINATES

NUMBER	LOCATION	DESCRIPTION	STATION	NORTHING	EASTING
1	BLACK - CL	P.O.T. STATION	0+00.00	1,773,620.130	1,024,230.170
2	BLACK - CL	P.O.T. STATION	34+00.00	1,773,676.550	1,027,629.701

BM#	DESCRIPTION	ELEVATION
BM#1	CHISELED "□" ON TOP OF S.E. PARAPET WALL OF BRIDGE OVER DUPAGE RIVER	601.96



THE BASES OF BEARINGS IS NAD 83, ILLINOIS STATE PLANE COORDINATE SYSTEM



I:\PROJECTS\2013\04-00069-18-BR\Drawings\298-18-01.dwg

Ciorba Group, Inc.
 CONSULTING ENGINEERS
 5507 North Cumberland Avenue, Suite 402
 Chicago, Illinois 60656
 Tel. 773.775.4000 Fax 773.775.4014

USER NAME	jkj21man
DESIGNED	JMK
DRAWN	JMK
CHECKED	MJL
DATE	1/29/2013

REVISIONS	REVISIONS
REVISIONS	REVISIONS
REVISIONS	REVISIONS
REVISIONS	REVISIONS

STATE OF ILLINOIS
 DEPARTMENT OF TRANSPORTATION

FAU 298 (BLACK ROAD) OVER THE DUPAGE RIVER
 ALIGNMENT, TIES AND BENCHMARKS

SCALE:	SHEET NO.	OF	SHEETS	STA.	TO	STA.
--------	-----------	----	--------	------	----	------

C.H. R.T.E.	SECTION	COUNTY	TOTAL SHEETS	SHEET NO.
298	04-00069-18-BR	WILL	51	11
CONTRACT NO. 63803				
ILLINOIS FED. AID PROJECT				