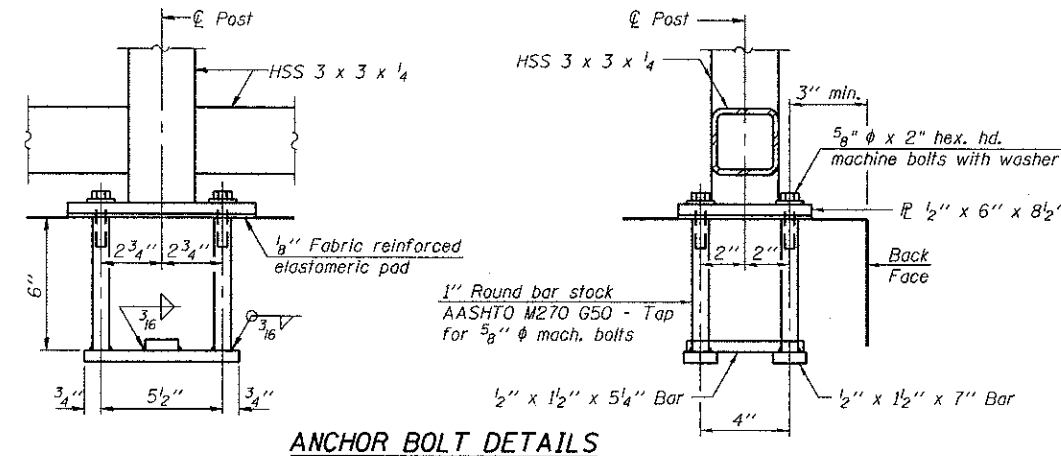
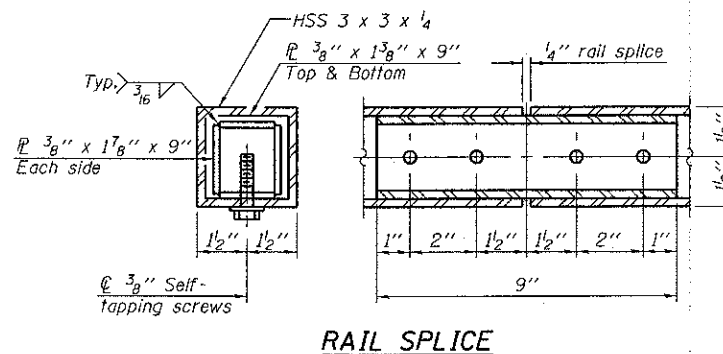
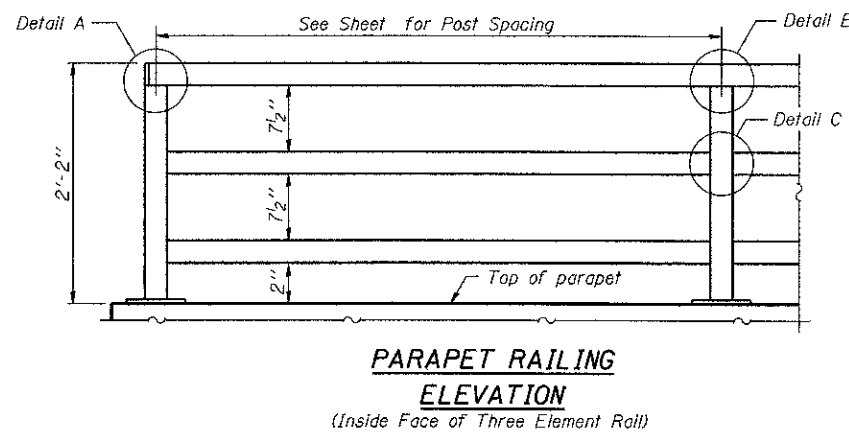
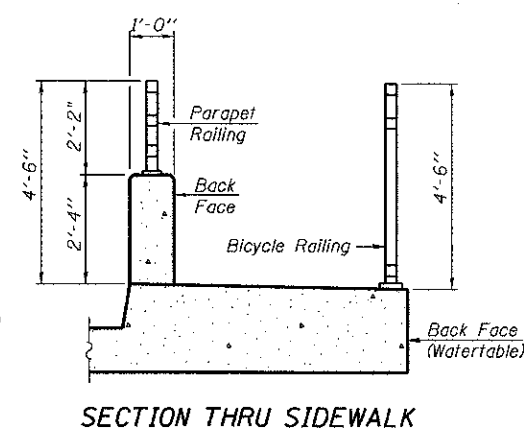
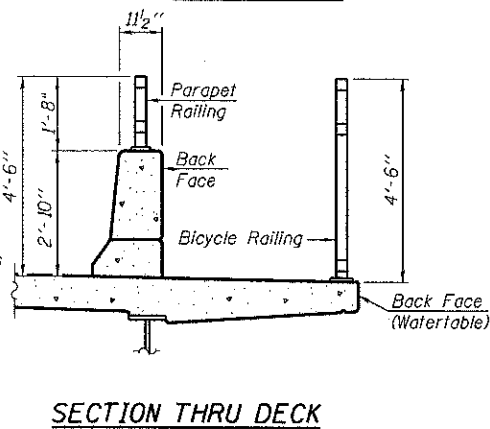
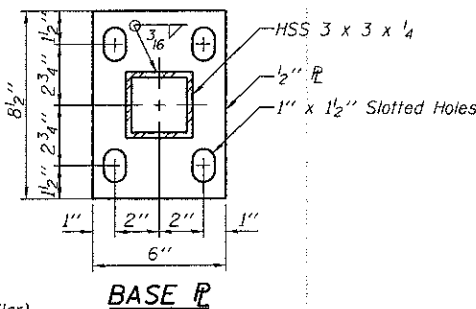
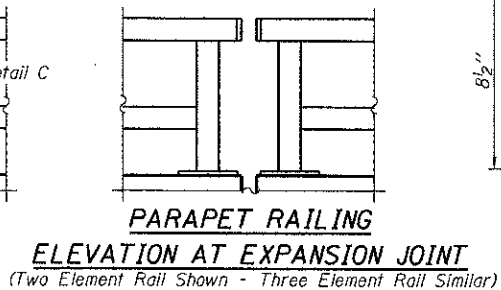
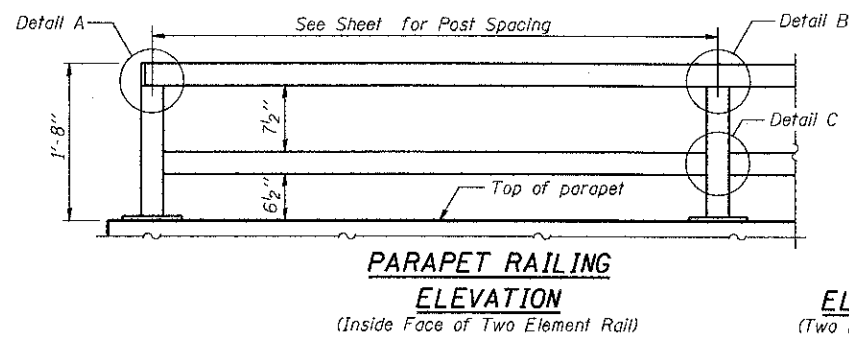


All steel rail elements shall be galvanized according to Article 509.05 of the Standard Specifications.



In lieu of the cast-in-place anchor device shown, the Contractor has the option of drilling and setting 5/8" φ anchor rods according to Article 509.06 of the Standard Specifications. Embedment shall be according to the manufacturer's specifications.

**BILL OF MATERIAL**

Item	Unit	Quantity
Bicycle Railing	Foot	204
Parapet Railing	Foot	0

R-29 1-27-12 (10'-0" Maximum Post Spacing)

ENGINEERING CONSULTANT  
**Clorba Group, Inc.**  
CONSULTING ENGINEERS  
5507 North Cicero Avenue, Suite 402  
Chicago, Illinois 60630  
Tel: 773.776.4028 Fax: 773.776.4014  
Email: Chicago@clorba.com

USER NAME = ahorn  
DESIGNED - RJR  
DRAWN - AMH  
CHECKED - MRJ  
PLOT SCALE = 4.5000' / 1" =  
DATE - FEBRUARY 4, 2013  
PLOT DATE = 2/22/2013

REVISER -  
REVISER -  
REVISER -  
REVISER -

STATE OF ILLINOIS  
DEPARTMENT OF TRANSPORTATION

MCHENRY AVENUE  
BICYCLE RAILING DETAIL

SCALE: SHEET NO. OF SHEETS STA. TO STA.

F.A.U. RTE.	SECTION	COUNTY	TOTAL SHEETS	SHEET NO.
120	11-00115-00-RS	MCHENRY	62	44
R-29			CONTRACT NO. 63806	
ILLINOIS FED. AID PROJECT				