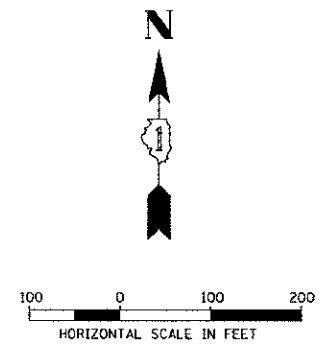
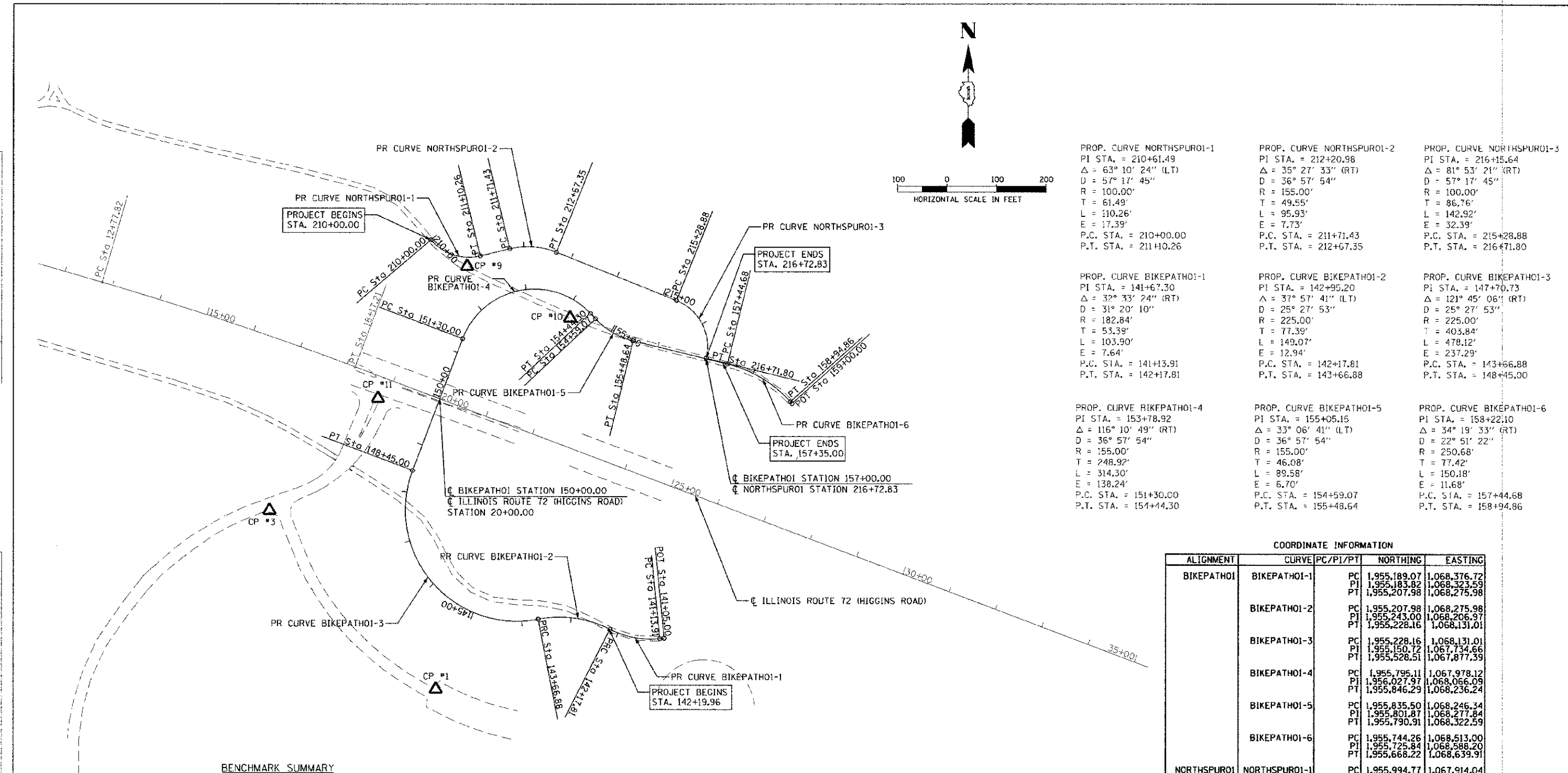


PLAN	DATE	BY	DATE
REVISION			
NO.			

PROFILE	DATE	BY	DATE
REVISION			
NO.			



PROP. CURVE NORTHSPUR01-1 PI STA. = 210+61.49 $\Delta = 63^\circ 10' 24''$ (LT) $D = 57^\circ 17' 45''$ $R = 100.00'$ $T = 61.49'$ $L = 110.26'$ $E = 17.39'$ P.C. STA. = 210+00.00 P.T. STA. = 211+10.26	PROP. CURVE NORTHSPUR01-2 PI STA. = 212+20.98 $\Delta = 35^\circ 27' 33''$ (RT) $D = 36^\circ 57' 54''$ $R = 155.00'$ $T = 49.55'$ $L = 95.93'$ $E = 7.73'$ P.C. STA. = 211+71.43 P.T. STA. = 212+67.35	PROP. CURVE NORTHSPUR01-3 PI STA. = 216+15.64 $\Delta = 81^\circ 53' 21''$ (RT) $D = 57^\circ 17' 45''$ $R = 100.00'$ $T = 86.76'$ $L = 142.92'$ $E = 32.39'$ P.C. STA. = 215+28.88 P.T. STA. = 216+71.80
PROP. CURVE BIKEPATH01-1 PI STA. = 141+67.30 $\Delta = 32^\circ 33' 24''$ (RT) $D = 31^\circ 20' 10''$ $R = 182.84'$ $T = 53.39'$ $L = 103.90'$ $E = 7.64'$ P.C. STA. = 141+13.91 P.T. STA. = 142+17.81	PROP. CURVE BIKEPATH01-2 PI STA. = 142+95.20 $\Delta = 37^\circ 57' 41''$ (LT) $D = 25^\circ 27' 53''$ $R = 225.00'$ $T = 77.39'$ $L = 149.07'$ $E = 12.94'$ P.C. STA. = 142+17.81 P.T. STA. = 143+66.88	PROP. CURVE BIKEPATH01-3 PI STA. = 147+70.73 $\Delta = 121^\circ 45' 06''$ (RT) $D = 25^\circ 27' 53''$ $R = 225.00'$ $T = 403.84'$ $L = 478.12'$ $E = 237.29'$ P.C. STA. = 143+66.88 P.T. STA. = 148+45.00
PROP. CURVE BIKEPATH01-4 PI STA. = 153+78.92 $\Delta = 116^\circ 10' 49''$ (RT) $D = 36^\circ 57' 54''$ $R = 155.00'$ $T = 248.92'$ $L = 314.30'$ $E = 138.24'$ P.C. STA. = 151+30.00 P.T. STA. = 154+44.30	PROP. CURVE BIKEPATH01-5 PI STA. = 155+05.15 $\Delta = 33^\circ 06' 41''$ (LT) $D = 22^\circ 51' 22''$ $R = 155.00'$ $T = 46.08'$ $L = 89.58'$ $E = 6.70'$ P.C. STA. = 154+59.07 P.T. STA. = 155+48.64	PROP. CURVE BIKEPATH01-6 PI STA. = 158+22.10 $\Delta = 34^\circ 19' 33''$ (RT) $D = 22^\circ 51' 22''$ $R = 250.68'$ $T = 77.42'$ $L = 150.18'$ $E = 11.68'$ P.C. STA. = 157+44.68 P.T. STA. = 158+94.86

COORDINATE INFORMATION

ALIGNMENT	CURVE	PC/PI/PT	NORTHING	EASTING
BIKEPATH01	BIKEPATH01-1	PC	1,955,189.07	1,068,376.72
		PI	1,955,183.82	1,068,323.59
		PT	1,955,207.98	1,068,275.98
	BIKEPATH01-2	PC	1,955,207.98	1,068,275.98
		PI	1,955,243.00	1,068,206.97
		PT	1,955,228.16	1,068,131.01
BIKEPATH01-3	PC	1,955,228.16	1,068,131.01	
	PI	1,955,150.72	1,067,734.66	
	PT	1,955,528.51	1,067,877.39	
BIKEPATH01-4	PC	1,955,795.11	1,067,978.12	
	PI	1,956,027.97	1,068,066.09	
	PT	1,955,846.29	1,068,236.24	
BIKEPATH01-5	PC	1,955,835.50	1,068,246.34	
	PI	1,955,801.87	1,068,277.84	
	PT	1,955,790.91	1,068,322.59	
BIKEPATH01-6	PC	1,955,744.26	1,068,513.00	
	PI	1,955,725.84	1,068,588.20	
	PT	1,955,668.22	1,068,639.91	
NORTHSPUR01	NORTHSPUR01-1	PC	1,955,994.77	1,067,914.04
		PI	1,955,947.95	1,067,953.90
		PT	1,955,962.39	1,068,013.67
	NORTHSPUR01-2	PC	1,955,976.76	1,068,073.13
		PI	1,955,988.40	1,068,121.30
		PT	1,955,969.93	1,068,167.29
NORTHSPUR01-3	PC	1,955,872.49	1,068,409.98	
	PI	1,955,840.16	1,068,490.49	
	PT	1,955,755.90	1,068,469.85	

BENCHMARK SUMMARY

NAME	ELEVATION	STATION	DESCRIPTION
TBM #1	697.99	145+05.54, 172.8' LT	FOUND PK NAIL NORTHWEST CORNER OF 1ST PARKING LOT SOUTH OF HIGGINS ROAD.
TBM #3	703.72	147+63.23, 274.61' LT	SET MAG NAIL SOUTHEAST CORNER OF 1ST PARKING LOT ENTRANCE AND MAIN ENTRANCE DRIVEWAY.
TBM #9	704.04	152+25.33, 87.64' LT	SET MAG NAIL IN BIKE PATH EAST OF I-290 RAMP NORTH OF HIGGINS ROAD.
TBM #10	703.42	154+16.51, 34.41' RT	SET MAG NAIL IN BIKE PATH EAST OF I-290 RAMP NORTH OF HIGGINS ROAD.
TBM #11	705.45	149+56.55, 117.16' LT	SET MAG NAIL @ OF 1ST ENTRANCE EAST OF I-290 RAMP SOUTH SIDE OF HIGGINS ROAD.

CONTROL POINT SUMMARY

NAME	NORTHING	EASTING	DESCRIPTION
CP #1	1955086.298	1067924.452	FOUND PK NAIL NORTHWEST CORNER OF 1ST PARKING LOT SOUTH OF HIGGINS ROAD.
CP #3	1955447.882	1067588.258	SET MAG NAIL SOUTHEAST CORNER OF 1ST PARKING LOT ENTRANCE AND MAIN ENTRANCE DRIVEWAY.
CP #9	1955941.342	1067987.206	SET MAG NAIL IN BIKE PATH EAST OF I-290 RAMP NORTH OF HIGGINS ROAD.
CP #10	1955837.138	1068195.030	SET MAG NAIL IN BIKE PATH EAST OF I-290 RAMP NORTH OF HIGGINS ROAD.
CP #11	1955674.269	1067807.215	SET MAG NAIL @ OF 1ST ENTRANCE EAST OF I-290 RAMP SOUTH SIDE OF HIGGINS ROAD.

DATUMS: HORIZONTAL = ILLINOIS STATE PLANE
VERTICAL = NAVD 88

FILE PATH: G:\C:\Users\mboone\Documents\2013\SHF-ATB.dwg

	USER NAME = mbooneford FILE = 8137-SHT-ATB.dwg PLOT SCALE = 100.0000 / 1 in. PLOT DATE = 2/13/2013	DESIGNED - CEC DRAWN - CEC CHECKED - DWB DATE - 02/04/2013	REVISED - REVISED - REVISED - REVISED -	STATE OF ILLINOIS DEPARTMENT OF TRANSPORTATION	BUSSE WOODS TRAIL OVERPASS ALIGNMENT, TIES, AND BENCHMARKS	F.A.P. RTE. = SECTION = 09-00058-00-BT COUNTY = COOK TOTAL SHEETS = 43 SHEET NO. = 5	CONTRACT NO. 63809
	SCALE: SHEET NAME: STA. TO STA.	FED. ROAD DIST. NO. 7 ILLINOIS FED. AID PROJECT					