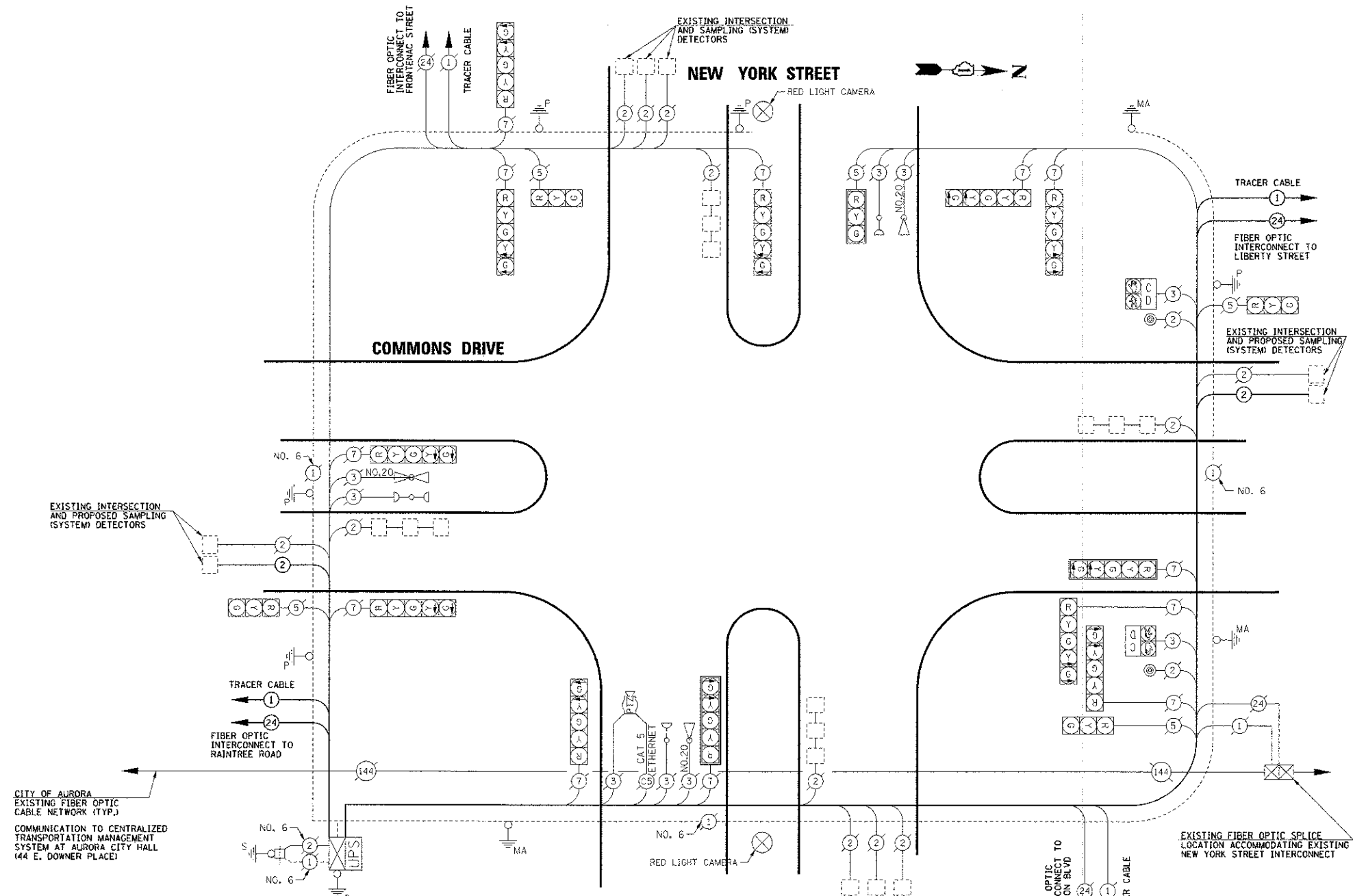


DATE	
BY	
REVIEWED	
DATE	
BY	
PLAN	
NO. OF WAY CHECKED	
NO. OF WAY CHECKED	
NO. OF WAY CHECKED	
NO. OF WAY CHECKED	

DATE	
BY	
REVIEWED	
DATE	
BY	
PROFILE	
NO. OF WAY CHECKED	
NO. OF WAY CHECKED	
NO. OF WAY CHECKED	
NO. OF WAY CHECKED	

### SCHEDULE OF QUANTITIES

PAY ITEM DESCRIPTION	UNIT	NEW YORK STREET
ENGINEER'S FIELD OFFICE, TYPE B	GAL MO	0.3
MOBILIZATION	L.SUM	0.1
TRAFFIC CONTROL AND PROTECTION, STANDARD 701601	L.SUM	0.1
TRAFFIC CONTROL AND PROTECTION, STANDARD 701701	L.SUM	0.1
TRAFFIC CONTROL AND PROTECTION, STANDARD 701801	L.SUM	0.1
MAINTENANCE OF EXISTING TRAFFIC SIGNAL INSTALLATION	EACH	1
ELECTRIC CABLE IN CONDUIT, LEAD-IN, NO. 14 1 PAIR	FOOT	724
TRAFFIC SIGNAL BACKPLATE, LOUVERED, ALUMINUM	EACH	1
INDUCTIVE LOOP DETECTOR	EACH	2
LIGHT DETECTOR AMPLIFIER	EACH	1

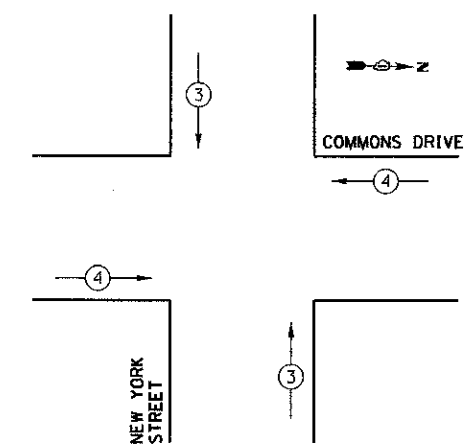


I.D.O.T TRAFFIC SIGNAL INSTALLATION ELECTRICAL SERVICE REQUIREMENTS					
TYPE	NO. LAMPS	WATTAGE		TOTAL WATTAGE	
		INCAND.	LED		
SIGNAL (RED)	17		17	0.50	144.5
(YELLOW)	17		25	0.25	106.3
(GREEN)	17		15	0.25	63.8
ARROW	24		12	0.10	28.8
PED. SIGNAL	2		25	1.00	50
CONTROLLER	1		100	1.00	100
				<b>TOTAL =</b>	<b>493.4</b>

ENERGY COSTS TO: CITY OF AURORA  
44 E. DOWNER PLACE  
AURORA, ILLINOIS 60507-2067

ENERGY SUPPLY CONTACT: MARK SCHERIBEL  
PHONE: (630) 723-2128  
COMPANY: COMMONWEALTH EDISON

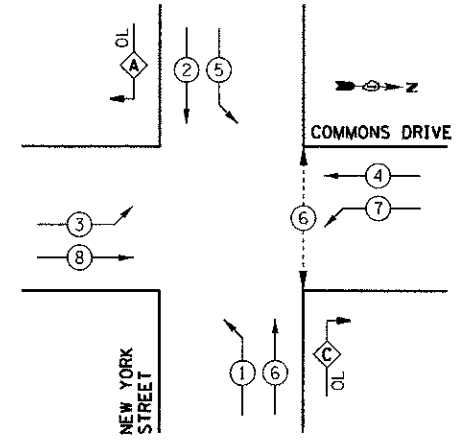
\* DENOTES SIGNAL HEAD, LED RETROFIT  
\*\* DENOTES CONFIRMATION BEACON, LED RETROFIT



PROPOSED EMERGENCY VEHICLE PREEMPTORS		
PROPOSED EMERGENCY VEHICLE PREEMPTORS	3	4
MOVEMENT	↑	→

CONTROLLER SEQUENCE LEGEND	
	DUAL ENTRY PHASE
	SINGLE ENTRY PHASE
	OVERLAP
	NUMBER REFERRING TO ASSOCIATED PHASE
	PEDESTRIAN PHASE

### CONTROLLER SEQUENCE



OVERLAP PHASE	PERMISSIVE PHASE	PROTECTED PHASE
A =	2 + 3	
C =	6 + 7	

THE TRAFFIC SIGNAL CONTROL EQUIPMENT FOR THIS PROJECT SHALL BE "ECONOLITE" TO MATCH THE EXISTING ADJACENT SYSTEM.

THE EMERGENCY VEHICLE PREEMPTION EQUIPMENT FOR THIS PROJECT SHALL BE OPTICOM AS REQUIRED BY THE CITY OF AURORA. LIGHT DETECTOR AMPLIFIERS SHALL BE OPTICOM MODEL 764 MULTIMODE PHASE SELECTORS.

THE END OF THE TRACER CABLE SHALL BE CONTINUOUS AND EXTEND INTO THE CONTROLLER CABINET.