

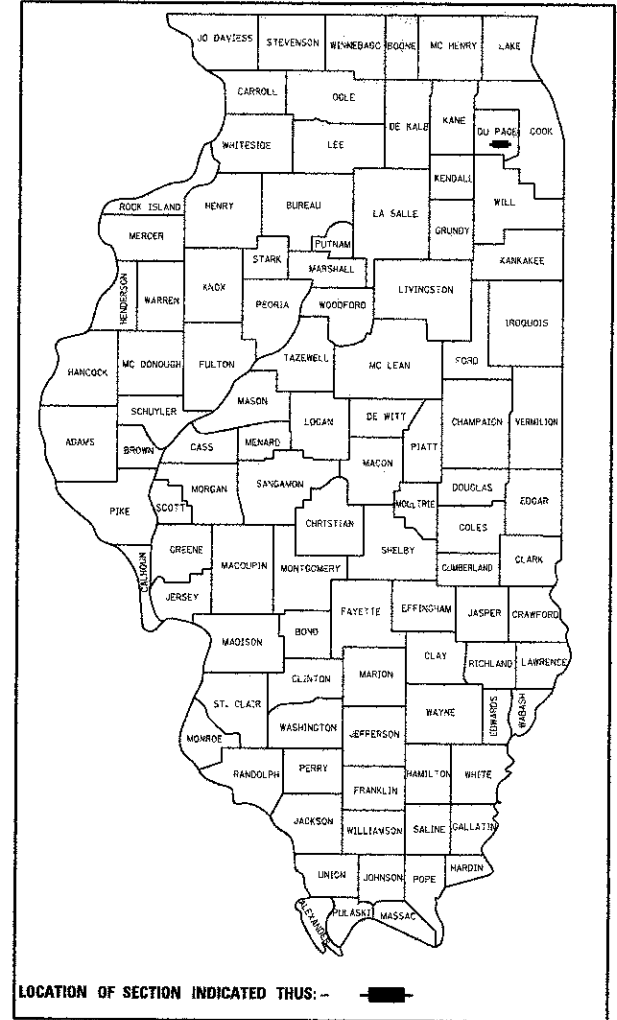
STATE OF ILLINOIS  
DEPARTMENT OF TRANSPORTATION  
DIVISION OF HIGHWAYS

F.A.P. RTE.	SECTION	COUNTY	TOTAL SHEETS	SHEET NO.
311	10-00057-00-SW	DUPAGE	23	1
		ILLINOIS	CONTRACT NO. 63819	

FOR INDEX OF SHEETS, SEE SHEET NO. 2

**PLANS FOR PROPOSED  
FEDERAL AID HIGHWAY**

**FAP 311 (US ROUTE 34)(OGDEN AVENUE)  
YACKLEY AVENUE TO SCHWARTZ AVENUE  
SIDEWALK CONSTRUCTION  
SECTION: 11-00057-00-SW  
PROJECT: M-9003(863)  
VILLAGE OF LISLE  
DuPAGE COUNTY  
C-91-055-12**



**TRAFFIC DATA**

**ADT:**

OGDEN AVENUE = 33,700 (2009)

**POSTED SPEED LIMIT:**

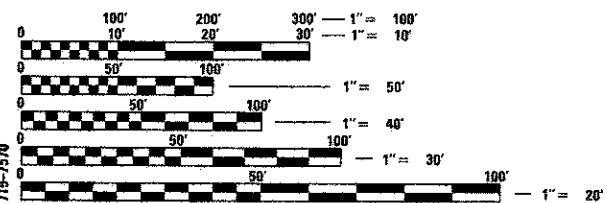
OGDEN AVENUE = 35 MPH

**DESIGN DESIGNATION: LOCAL ROAD**

OGDEN AVENUE = OTHER PRINCIPAL ARTERIAL

PROGRAM AND OFFICE ENGINEER: CHARLES F. RIDDLE, P.E. (847) 705-4406, SCHAUMBURG, IL  
CONSULTANT: JAMES J. BENES & ASSOCIATES, INC. (630) 719-7570

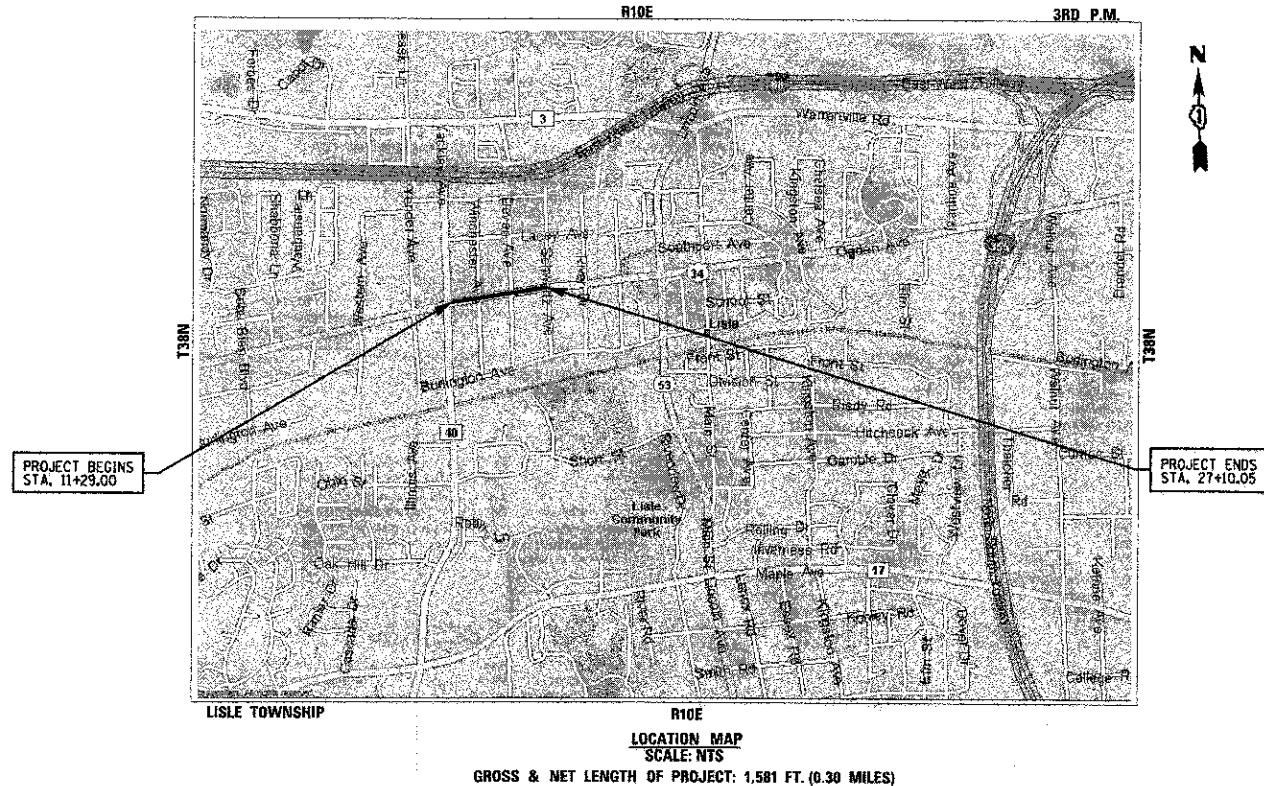
PROJECT LOCATED IN  
VILLAGE OF LISLE



FULL SIZE PLANS HAVE BEEN PREPARED USING STANDARD ENGINEERING SCALES. REDUCED SIZED PLANS WILL NOT CONFORM TO STANDARD SCALES. IN MAKING MEASUREMENTS ON REDUCED PLANS, THE ABOVE SCALES MAY BE USED.

J.U.L.I.E.  
JOINT UTILITY LOCATION INFORMATION FOR EXCAVATION  
1-800-892-0123  
OR 811

CONTRACT NO. 63819



STATE OF ILLINOIS  
DEPARTMENT OF TRANSPORTATION  
DIVISION OF HIGHWAYS

APPROVED: 2/19/13 2013  
*James J. Benes*  
Village of Lisle, Director of Public Works

PASSED: FEBRUARY 25 2013  
*C. J. Holt*  
District Engineer of Local Roads & Streets

Releasing for Bid  
Based on Limited Review February 27 2013  
*John Fontana*  
Deputy Director of Highways, Region I Engineer

PRINTED BY AUTHORITY OF THE STATE OF ILLINOIS

JAMES J. BENES & ASSOCIATES, INC.

JAMES J. BENES & ASSOCIATES  
CONSULTING ENGINEERS  
950 WARRENVILLE ROAD, SUITE 101  
LISLE, IL 60532  
(630) 719-7570

SIGNATURE: *James J. Benes*  
DATE: 2/19/13

IL LICENSE NO: 062-080441  
EXP. DATE: NOVEMBER 30, 2013  
FIELD: JAMES J. BENES AND ASSOCIATES, INC.  
CIVIL ENGINEERING