

STATE OF ILLINOIS  
DEPARTMENT OF TRANSPORTATION  
DIVISION OF HIGHWAYS

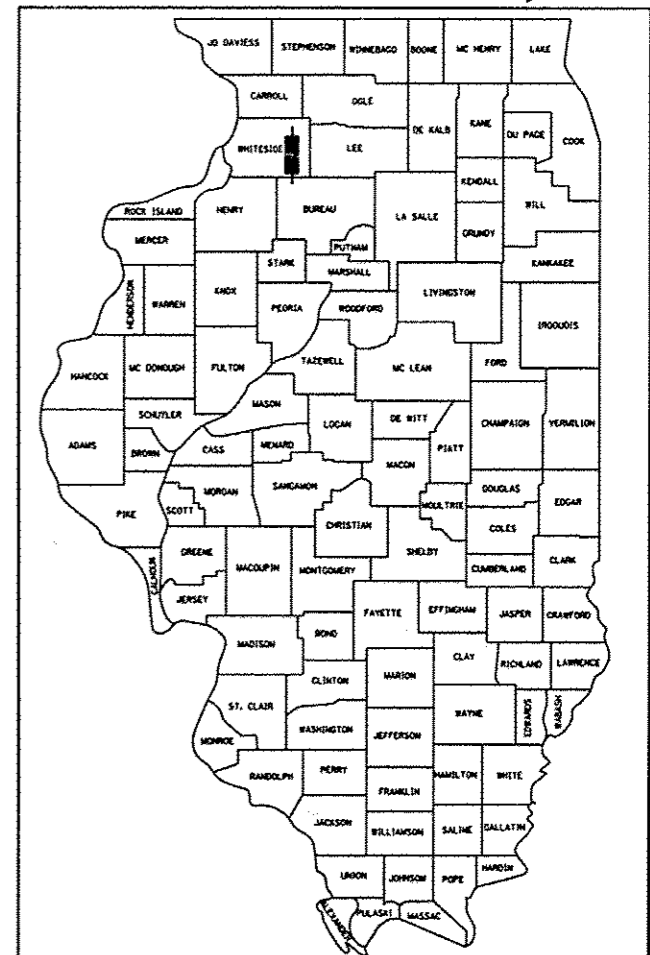
**PROPOSED  
HIGHWAY PLANS**

FAP ROUTE 646 (IL 40)  
SECTION 101 BR-3  
PROJECT: ACBRF-ACF-0646(078)  
BRIDGE REPLACEMENT  
WHITESIDE COUNTY

FOR INDEX OF SHEETS, SEE SHEET NO. 2  
FOR STATE STANDARDS, SEE SHEET NO. 2  
FUNCTIONAL CLASSIFICATION  
OTHER PRINCIPAL ARTERIAL  
2007 ADT = 8,500  
2027 ADT = 11,000  
POSTED AND DESIGN SPEED LIMIT = 45 MPH

F.A.P. RTE.	SECTION	COUNTY	TOTAL SHEETS	SHEET NO.
646	101 BR-3	WHITESIDE	113	1
FED. ROAD DIST. NO. 2	ILLINOIS	CONTRACT NO. 64C17		

\* 126 41 = 127  
D-92-045-06  
\* 113 4 13 = 126



LOCATION OF SECTION INDICATED THUS: —■—

C-92-091-12  
R 7 E

PROJECT / SECTION ENDS  
STA. 637 + 00.00

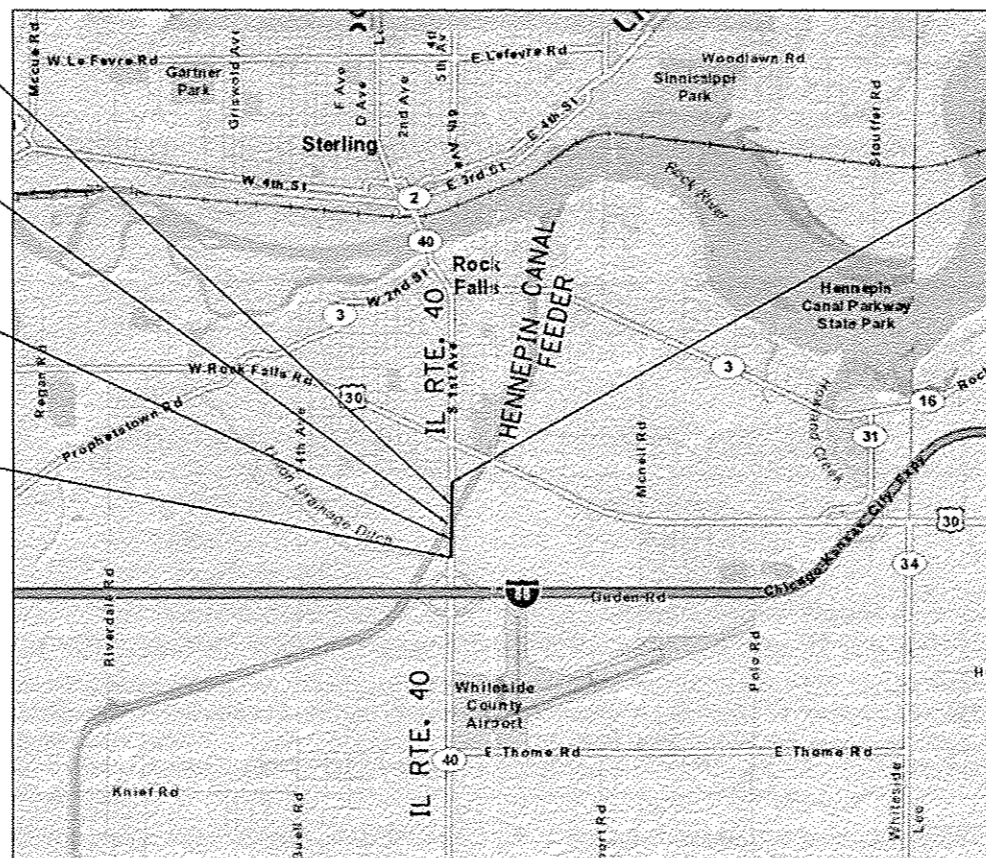
STRUCTURE REMOVAL AND REPLACEMENT STA. 632 + 59.38  
(EXISTING SN = 098-0015)  
IL 40 OVER HENNEPIN CANAL FEEDER

PROJECT / SECTION BEGINS  
STA. 628 + 50.00

IMPROVEMENT BEGINS  
STA. 625 + 00.00

IMPROVEMENT ENDS  
STA. 641 + 71.93

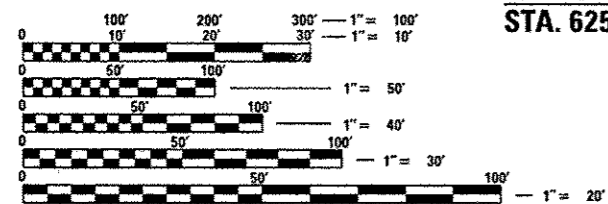
STRAND ASSOCIATES, INC.  
IDFPR NO. 184001273



LOCATION MAP

1" = 0.27 MILE

GROSS LENGTH = 850 FEET = 0.161 MILE  
NET LENGTH = 850 FEET = 0.161 MILE



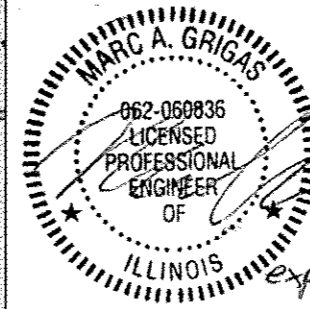
FULL SIZE PLANS HAVE BEEN PREPARED USING STANDARD ENGINEERING SCALES. REDUCED SIZED PLANS WILL NOT CONFORM TO STANDARD SCALES. IN MAKING MEASUREMENTS ON REDUCED PLANS, THE ABOVE SCALES MAY BE USED.

J.U.L.I.E.  
JOINT UTILITY LOCATION INFORMATION FOR EXCAVATION  
1-800-892-0123  
OR 811

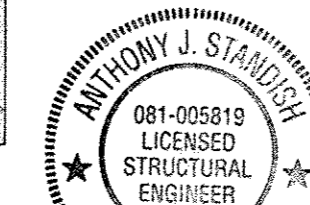
COLOMA TOWNSHIP, SECTION 33 & 34, MONTMORENCY TOWNSHIP, SECTION 3 & 4  
PROJECT ENGINEER: BECKY MARRUFFO  
PROJECT MANAGER DERRICK LOPEZ (815) 284-5930

CONTRACT NO. 64C17

FAP ROUTE 646 WHITESIDE COUNTY SECTION NUMBER 101 BR-3



MARC A. GRIGAS, P.E.  
THIS STAMP APPLIES TO  
DRAWINGS NO. 1-56, 92-113



ANTHONY J. STANDISH, P.E., S.E.  
THIS STAMP APPLIES TO  
DRAWINGS NO. 57-91

**SA**  
STRAND ASSOCIATES  
1170 SOUTH HOBBS ROAD  
JOLIET, ILLINOIS 60431  
815) 744-4200  
IDFPR NO. 184-001273

STATE OF ILLINOIS  
DEPARTMENT OF TRANSPORTATION  
DIVISION OF HIGHWAYS

SUBMITTED Oct 16 2012  
Paul Koeter  
DEPUTY DIRECTOR OF HIGHWAYS, REGION ENGINEER

Feb 1 2013  
John D. Baranzoli PE/EA  
ENGINEER OF DESIGN AND ENVIRONMENT

Feb 1 2013  
Chris Osman PE/EA  
DIRECTOR OF HIGHWAYS, CHIEF ENGINEER

PRINTED BY THE AUTHORITY  
OF THE STATE OF ILLINOIS

Rev. 4-10-13  
A Rev. 2-20-13

CONSULTANT: STRAND ASSOCIATES INC. (815) 744-4200 ANTHONY J. STANDISH, P.E., S.E. (815) 722-4200