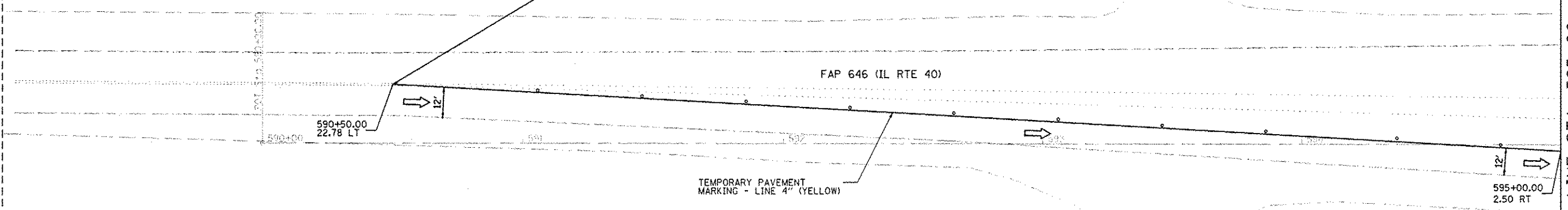
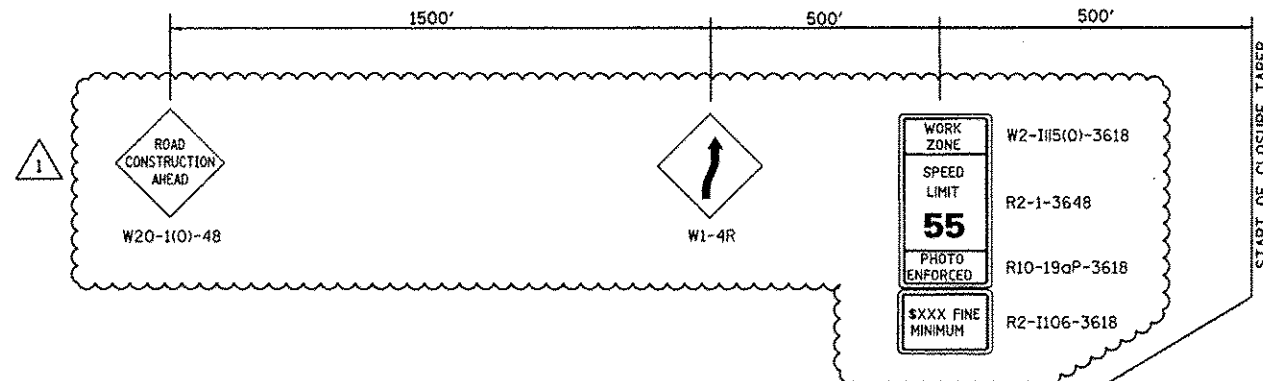


STAGE 2

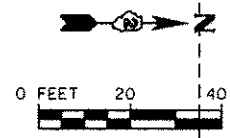


STAGE 2 NOTES:

1. REFER TO STANDARD 701416 FOR ADDITIONAL SIGNS AND DEVICES NOT SHOWN.
2. RELOCATE TEMPORARY CONCRETE BARRIER ACCORDING TO STANDARD 704001.
3. CONSTRUCT WEST SIDE OF BRIDGE AND ROADWAY INCLUDING SHOULDERS AND GUARDRAIL.
4. INSTALL PERMANENT PAVEMENT MARKINGS USING STANDARD 701426.

LEGEND

- DRUM WITH STEADY BURNING MONODIRECTIONAL LIGHT AT 40' C-C SPACING
- 1 BARRICADE TYPE III WITH FLASHING LIGHTS, QUANTITY AS REQUIRED FOR PROPER CLOSURE TO SATISFACTION OF THE ENGINEER
- TEMPORARY PAVEMENT MARKING
- ▨ IMPACT ATTENUATORS, TEMPORARY (NON-REDIRECTIVE), TEST LEVEL 3
- ↑ TRAFFIC SIGN
- ➔ DIRECTION OF TRAFFIC
- ▨ WORK ZONE



FILE NAME = S:\J01_6328--639\6346\W25\Waterco\Shk\0264C17-shk-1.mxd.dgn

1170 SOUTH HOUBOLT ROAD JOLIET, ILLINOIS 60431 (815) 744-4200	USER NAME = dennis*	DESIGNED - VLF	REVISED - 04-05-13	STATE OF ILLINOIS DEPARTMENT OF TRANSPORTATION	MAINTENANCE OF TRAFFIC STAGE 2			F.A.P. RTE. 646	SECTION 101 BR-3	COUNTY WHITESIDE	TOTAL SHEETS 113	SHEET NO. 41
	PLOT SCALE = 48.0000 1 / IN.	CHECKED - MAG	REVISED -		SCALE: 1" = 20'	SHEET 11 OF 21 SHEETS	STA. 590+00 TO STA. 595+00	CONTRACT NO. 64C17				
	PLOT DATE = 4/4/2013	DATE - 10-12-12	REVISED -		FED. ROAD DIST. NO. 2 ILLINOIS FED. AID PROJECT							