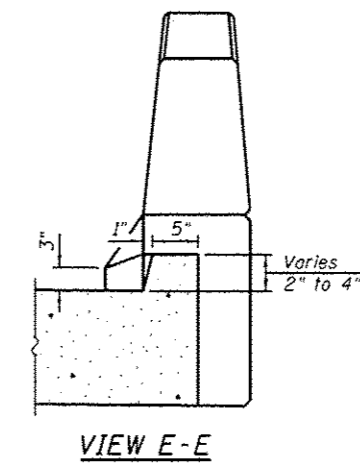
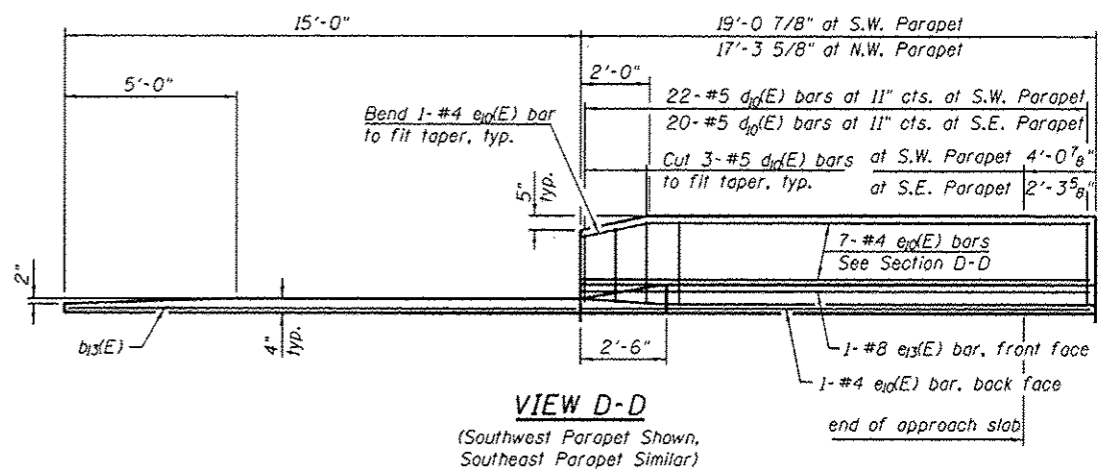
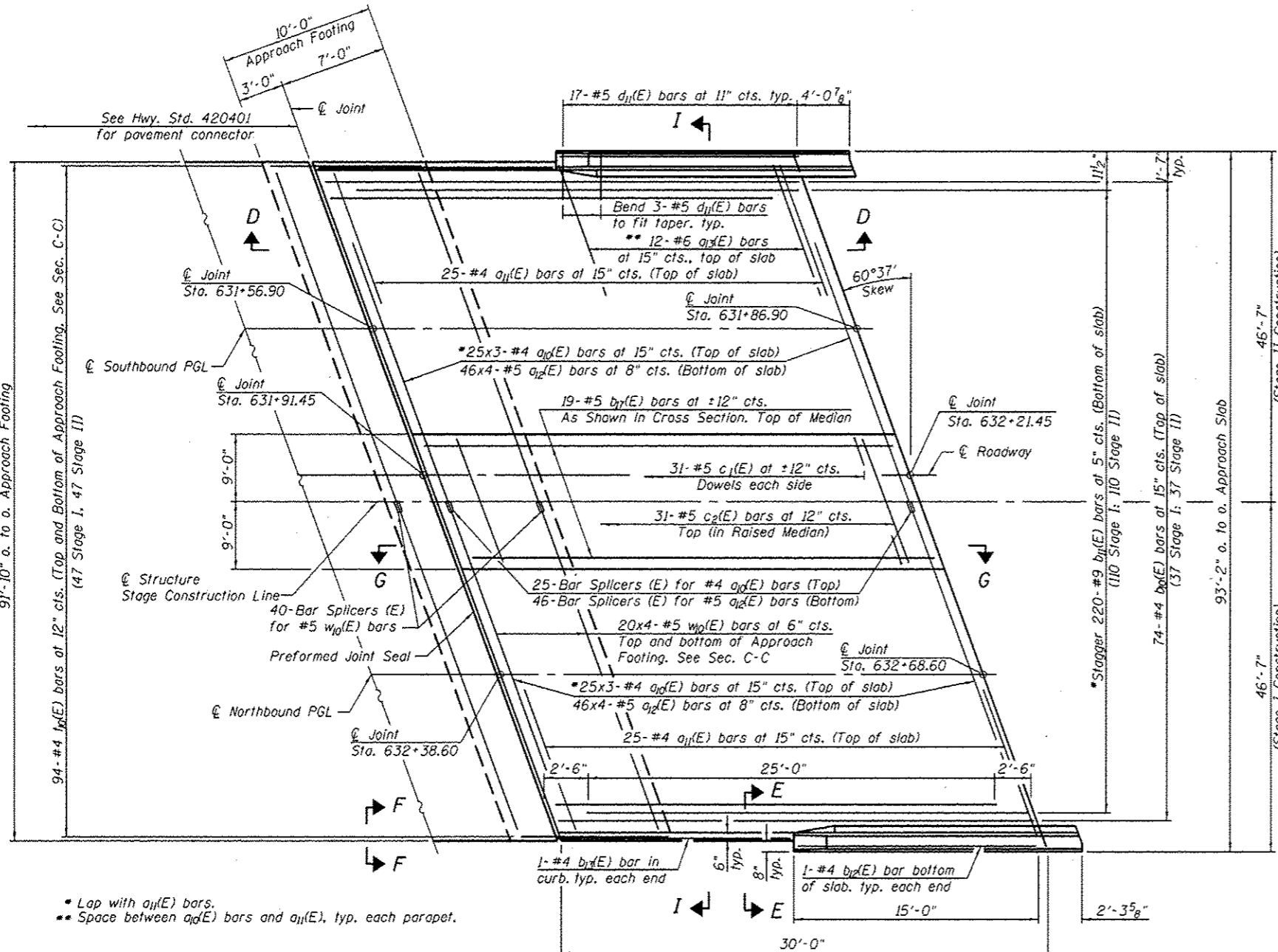


Notes:
 See Sheet 16 of 35 for Sections G-G, H-H and I-I.
 $a_d(E)$ and $a_l(E)$ bar spacings measured along C.Rdwy.
 Bars indicated thus 20x3-#5 etc. indicates 20 lines of bars with 3 lengths per line.
 Tilt #9 $b_l(E)$ bars as required to maintain clearance.
 See Sheet 14 of 35 for bar lap requirements.

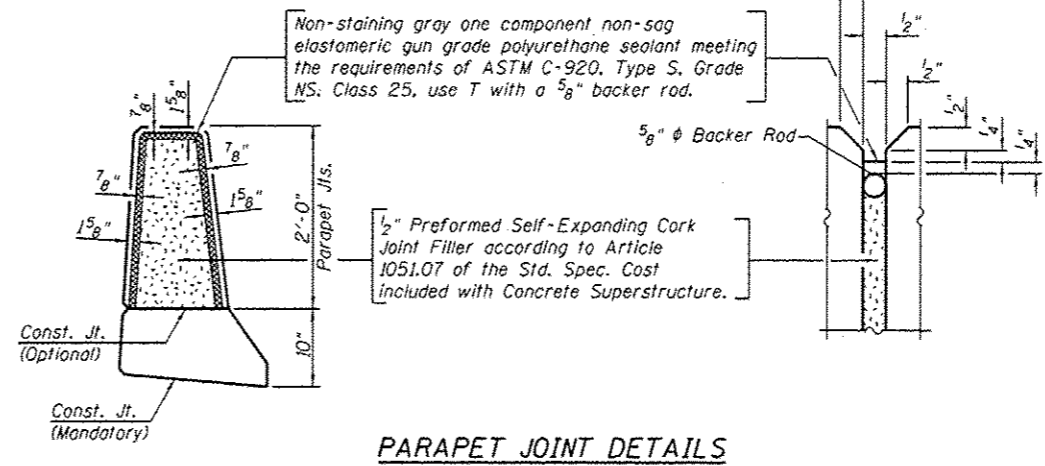
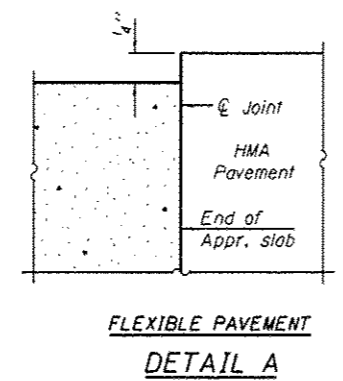


**SOUTH APPROACH
 BILL OF MATERIAL**

Bar	No.	Size	Length	Shape
$a_d(E)$	150	#4	25'-6"	—
$a_l(E)$	50	#4	25'-11"	—
$a_d(E)$	368	#5	25'-9"	—
$a_l(E)$	24	#6	6'-6"	—
$b_d(E)$	74	#4	29'-8"	—
$b_l(E)$	220	#9	29'-9"	—
$b_d(E)$	2	#4	14'-8"	—
$b_l(E)$	2	#4	15'-10"	—
$b_l(E)$	19	#5	29'-8"	—
$c_1(E)$	62	#5	1'-7"	—
$c_2(E)$	31	#5	36'-4"	—
$d_d(E)$	42	#5	5'-7"	—
$d_l(E)$	34	#5	7'-11"	—
$e_d(E)$	16	#4	14'-8"	—
$e_l(E)$	2	#8	14'-8"	—
$t_d(E)$	188	#4	20'-0"	—
$w_d(E)$	320	#5	25'-6"	—
Concrete Superstructure	Cu. Yd.		176	
Concrete Structures	Cu. Yd.		58	
Reinforcement Bars, Epoxy Coated	Pound		39,950	***
Reinforcement Bars, Epoxy Coated	Pound		11,030	****

*** Included in Superstructure quantity
 **** Included in Substructure quantity

SOUTH PLAN



- Lap with $a_l(E)$ bars.
- Space between $a_d(E)$ bars and $a_l(E)$, typ. each parapet.

FILE NAME: S:\101\16280-0399\0345\025\Micro\AS\Structural\Plan\101628015-0417-01-01-BAP.dgn