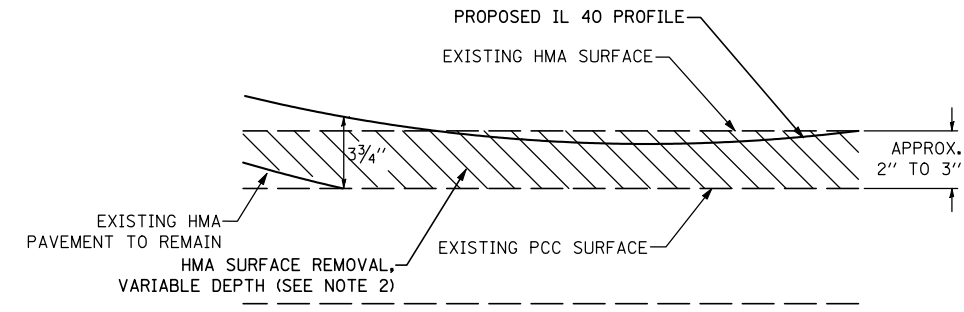


HMA SURFACE REMOVAL, VARIABLE DEPTH DETAIL

APPROXIMATE STATIONS
 STA. 628+50.00 TO STA. 629+30.00

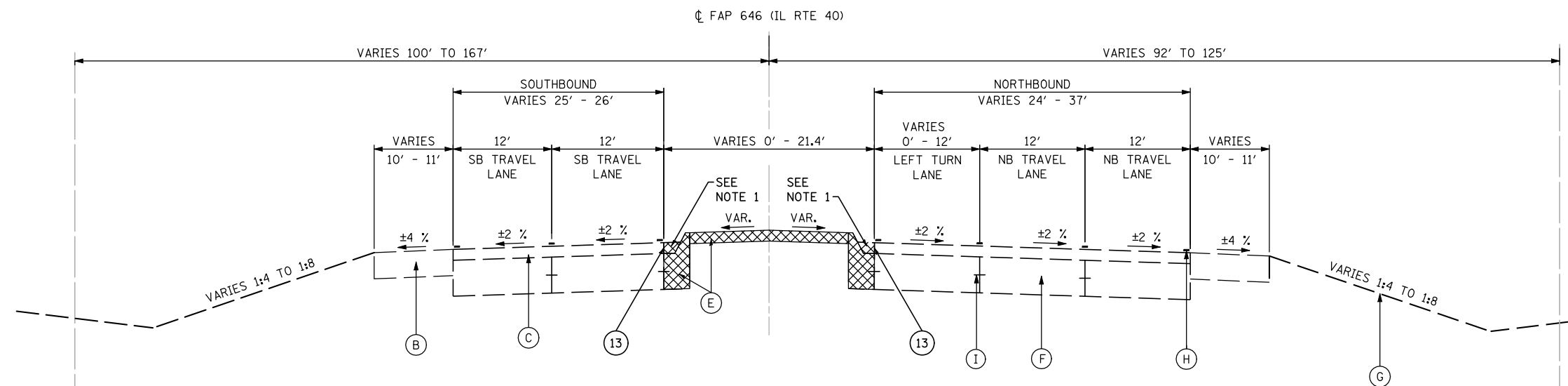


HMA SURFACE REMOVAL, VARIABLE DEPTH DETAIL

APPROXIMATE STATIONS
 STA. 636+45.00 TO STA. 637+00.00

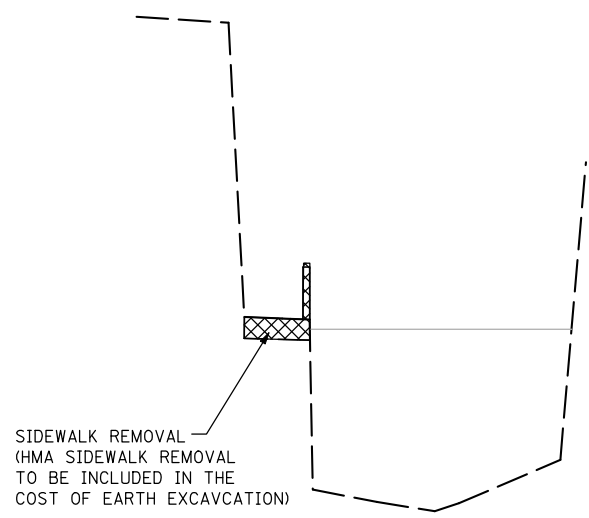
- EXISTING LEGEND**
- (A) EXISTING GUARDRAIL
 - (B) EXISTING HMA SHOULDER
 - (C) EXISTING HMA SURFACE COURSE
 - (D) EXISTING CURB AND GUTTER
 - (E) EXISTING CONCRETE MEDIAN
 - (F) EXISTING PCC PAVEMENT
 - (G) EXISTING GROUND
 - (H) EXISTING PAVEMENT MARKING
 - (I) TIE BARS
- REMOVAL ITEMS

- PROPOSED LEGEND**
- (1) TOPSOIL FURNISH AND PLACE, 4"
 - (2) SEEDING, CLASS 2A
 - (3) MIXTURE FOR CRACKS, JOINTS, AND FLANGWAYS
 - (4) AGGREGATE SUBGRADE IMPROVEMENT, 12"
 - (5) LEVELING BINDER (MACHINE METHOD), N70 (112 LBS/SY-IN)
 - (6) HOT-MIX ASPHALT BINDER COURSE, IL-19.0, N70 (112 LBS/SY-IN)
 - (7) HOT-MIX ASPHALT SURFACE COURSE, MIX "C", N50 (112 LBS/SY-IN)
 - (8) HOT-MIX ASPHALT SURFACE COURSE, MIX "D", N70 (112 LBS/SY-IN)
 - (9) HOT-MIX ASPHALT SHOULDERS, 6 1/2"
 - (10) COMBINATION CONCRETE CURB AND GUTTER, TYPE M-6.24
 - (11) CONCRETE MEDIAN SURFACE, 4 INCH
 - (12) TRAFFIC BARRIER TERMINAL, TYPE 1 (SPECIAL), 2, 5, OR 6
 - (13) SAW CUTS (INCIDENTAL TO C&G REMOVAL AND ISLAND REMOVAL)
 - (14) TIE BARS
 - (15) BITUMINOUS MATERIALS (PRIME COAT)
 - (16) PAVEMENT BREAKING
 - (17) AGGREGATE SUBGRADE IMPROVEMENT

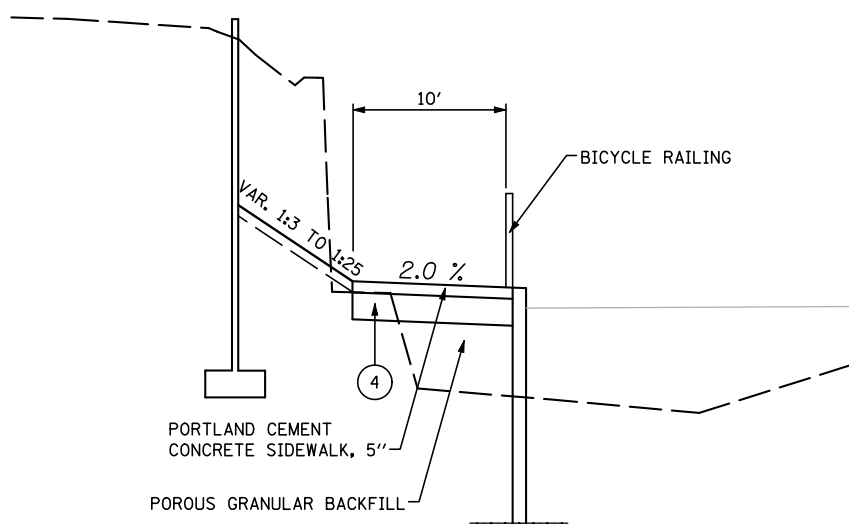


EXISTING TYPICAL SECTION

STA. 637+60.02 TO STA. 641+71.93



EXISTING BIKE PATH TYPICAL SECTION



PROPOSED BIKEPATH TYPICAL SECTION

- NOTES:**
1. REMOVAL OF EXISTING HMA SURFACE COURSE ON TOP OF EXISTING GUTTER PAN SHALL BE INCIDENTAL TO CURB AND GUTTER REMOVAL AND ISLAND REMOVAL.
 2. THE EXISTING HMA SURFACE SHALL BE REMOVED TO THE EXISTING SURFACE OF THE PCC PAVEMENT AND THEN TAPER TO THE EXISTING HMA SURFACE AT A POINT WHERE A TOTAL OF 3 3/4" OF HMA PAVEMENT CAN BE PLACED BETWEEN THE PROPOSED PROFILE AND EXISTING HMA PAVEMENT SURFACE. REFER TO HMA SURFACE REMOVAL, VARIABLE DEPTH DETAIL

FILE NAME = S:\JOL\6300--6399\6346\025\Microa\Sh\A\D264C17-ah-typical.dgn

SA STRAND ASSOCIATES
 1170 SOUTH HOUBOLT ROAD
 JOLIET, ILLINOIS 60431
 (815) 744-4200

USER NAME = dennisw	DESIGNED - VLF	REVISED -
DRAWN - DJW	REVISIONS -	
CHECKED - MAG	REVISIONS -	
DATE - 10-12-12	REVISIONS -	
PLOT SCALE = 100.0000' / IN.		
PLOT DATE = 10/12/2012		

STATE OF ILLINOIS DEPARTMENT OF TRANSPORTATION

TYPICAL SECTIONS	
SCALE: NTS	SHEET 2 OF 5 SHEETS
STA.	TO STA.

F.A.P. RTE.	SECTION	COUNTY	TOTAL SHEETS	SHEET NO.
646	101 BR-3	WHITESIDE	113	13
CONTRACT NO. 64C17			FED. ROAD DIST. NO. 2 ILLINOIS FED. AID PROJECT	