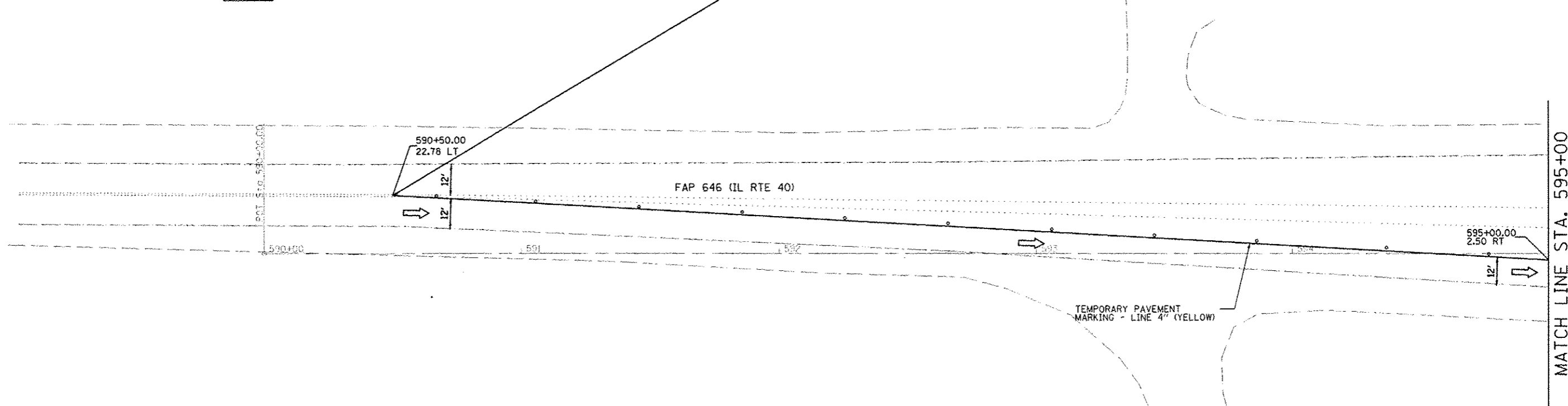
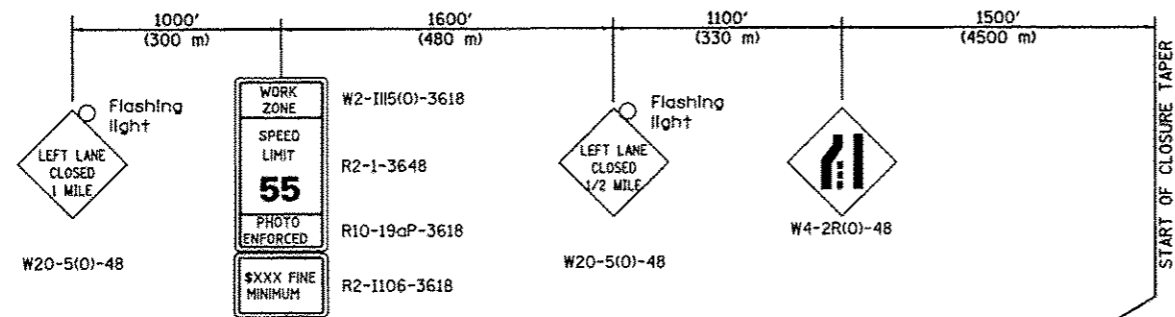


STAGE 1

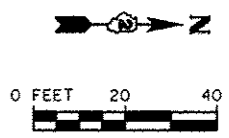


STAGE 1 NOTES:

1. CONSTRUCT THE EAST SIDE OF THE BRIDGE AND ROADWAY INCLUDING SHOULDERS AND GUARDRAIL.
2. INSTALL TEMPORARY CONCRETE BARRIER ACCORDING TO STANDARD 704001.
3. REFER TO STANDARD 701416 AND DISTRIC STANDARDS FOR ADDITIONAL SIGNS AND DEVICES NOT SHOWN.
4. BARRIER WALL OFFSETS ARE TO THE TRAFFIC SIDE OF THE WALL.
5. A CHECK BARRICADE SHALL BE PLACED IN THE MIDDLE OF THE CLOSED LANE AT THE SHOULDER AT 1000' CENTERS.
6. AT THE COMPLETION OF STAGE 1 CONSTRUCTION, ALL STAGE 1 TEMPORARY PAVEMENT MARKINGS SHALL BE REMOVED AND TEMPORARY PAVEMENT MARKINGS FOR THE WINTER SHUT DOWN STAGE SHALL BE INSTALLED.

LEGEND

- DRUM WITH STEADY BURNING MONODIRECTIONAL LIGHT AT 40' C-C SPACING
- ⊥ BARRICADE TYPE III WITH FLASHING LIGHTS, QUANTITY AS REQUIRED FOR PROPER CLOSURE TO SATISFACTION OF THE ENGINEER
- TEMPORARY PAVEMENT MARKING
- ▤ IMPACT ATTENUATORS, TEMPORARY (NON-REDIRECTIVE), TEST LEVEL 3
- † TRAFFIC SIGN
- ➔ DIRECTION OF TRAFFIC
- ▨ WORK ZONE



Rev. Sheet 2-20-13

FILE NAME = e:\proj\15288-6399\646\15288-6399\15288-6399.dwg

STRAND ASSOCIATES*
1170 SOUTH HOUBOLT ROAD
JOLIET, ILLINOIS 60431
(815) 744-4200

USER NAME = vaneason	DESIGNED - VLF	REVISED -
DRAWN - DJW	REVISED -	
PLOT SCALE = 48.0000' / IN.	CHECKED - MAG	REVISED -
PLOT DATE = 2/18/2013	DATE - 10-12-12	REVISED -

**STATE OF ILLINOIS
DEPARTMENT OF TRANSPORTATION**

**MAINTENANCE OF TRAFFIC
STAGE 1**

SCALE: 1" = 20' SHEET 1 OF 21 SHEETS STA. 590+00 TO STA. 595+00

F.A.P. RTE.	SECTION	COUNTY	TOTAL SHEETS	SHEET NO.
646	101 BR-3	WHITESIDE	113	30
CONTRACT NO. 64C17			FED. ROAD DIST. NO. 2 ILLINOIS FED. AID PROJECT	