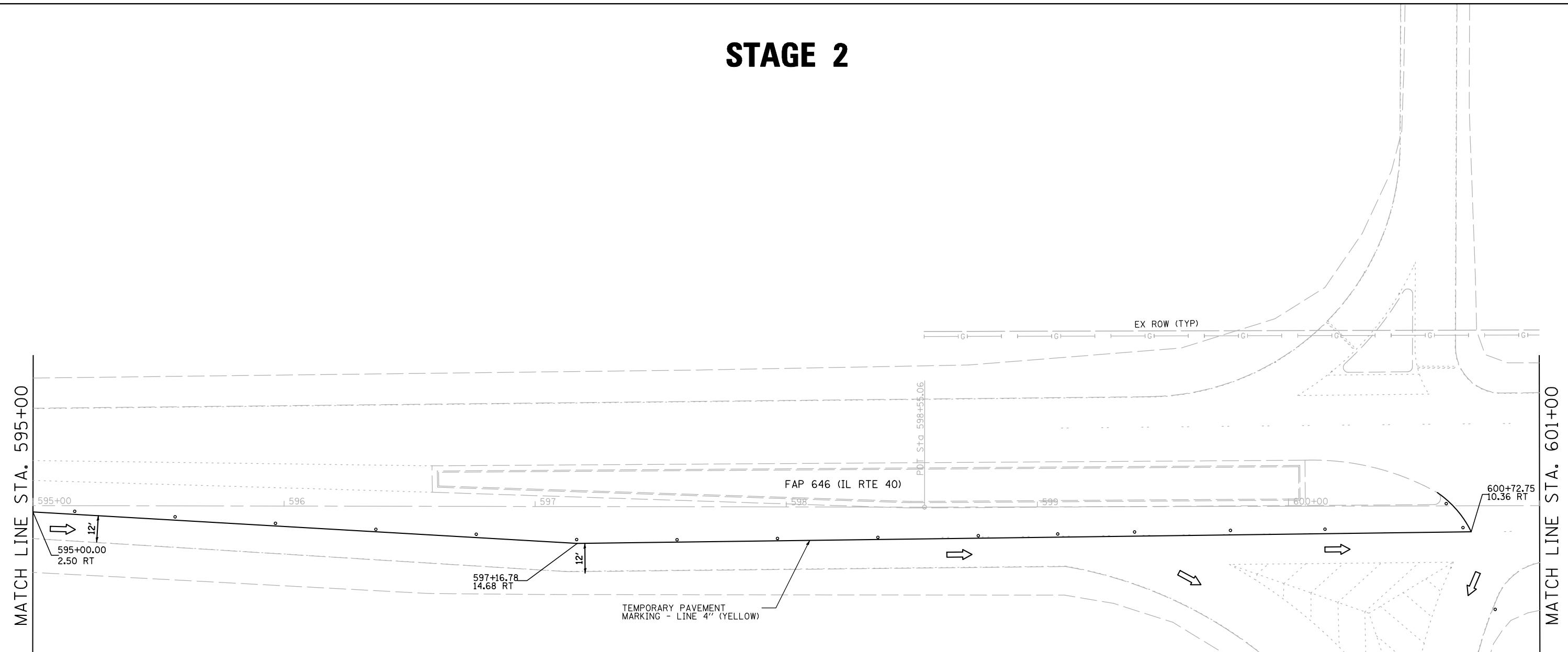


STAGE 2

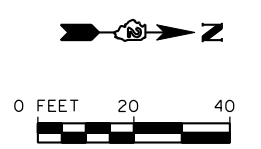


STAGE 2 NOTES:

- REFER TO STANDARD 701416 FOR ADDITIONAL SIGNS AND DEVICES NOT SHOWN.
- RELOCATE TEMPORARY CONCRETE BARRIER ACCORDING TO STANDARD 704001.
- CONSTRUCT WEST SIDE OF BRIDGE AND ROADWAY INCLUDING SHOULDERS AND GUARDRAIL.
- INSTALL PERMANENT PAVEMENT MARKINGS USING STANDARD 701426.

LEGEND

- DRUM WITH STEADY BURNING MONODIRECTIONAL LIGHT AT 40' C-C SPACING
- ⊥ BARRICADE TYPE III WITH FLASHING LIGHTS, QUANTITY AS REQUIRED FOR PROPER CLOSURE TO SATISFACTION OF THE ENGINEER
- TEMPORARY PAVEMENT MARKING
- ▨ IMPACT ATTENUATORS, TEMPORARY (NON-REDIRECTIVE), TEST LEVEL 3
- ⊣ TRAFFIC SIGN
- ➡ DIRECTION OF TRAFFIC
- ▨ WORK ZONE



FILE NAME = s:\p1\6380--6395\6346\025\macro\sh\0264C17-sh2-stageing13.dgn



USER NAME = vanessam	DESIGNED - VLF	REVISED -
	DRAWN - DJW	REVISED -
PLOT SCALE = 40.0000' / IN.	CHECKED - MAG	REVISED -
PLOT DATE = 10/15/2012	DATE - 10-12-12	REVISED -

**STATE OF ILLINOIS
DEPARTMENT OF TRANSPORTATION**

**MAINTENANCE OF TRAFFIC
STAGE 2**

SCALE: 1" = 20' SHEET 12 OF 21 SHEETS STA. 595+00 TO STA. 601+00

F.A.P. RTE. 646	SECTION 101 BR-3	COUNTY WHITESIDE	TOTAL SHEETS 113	SHEET NO. 42
FED. ROAD DIST. NO. 2 [ILLINOIS] FED. AID PROJECT			CONTRACT NO. 64C17	