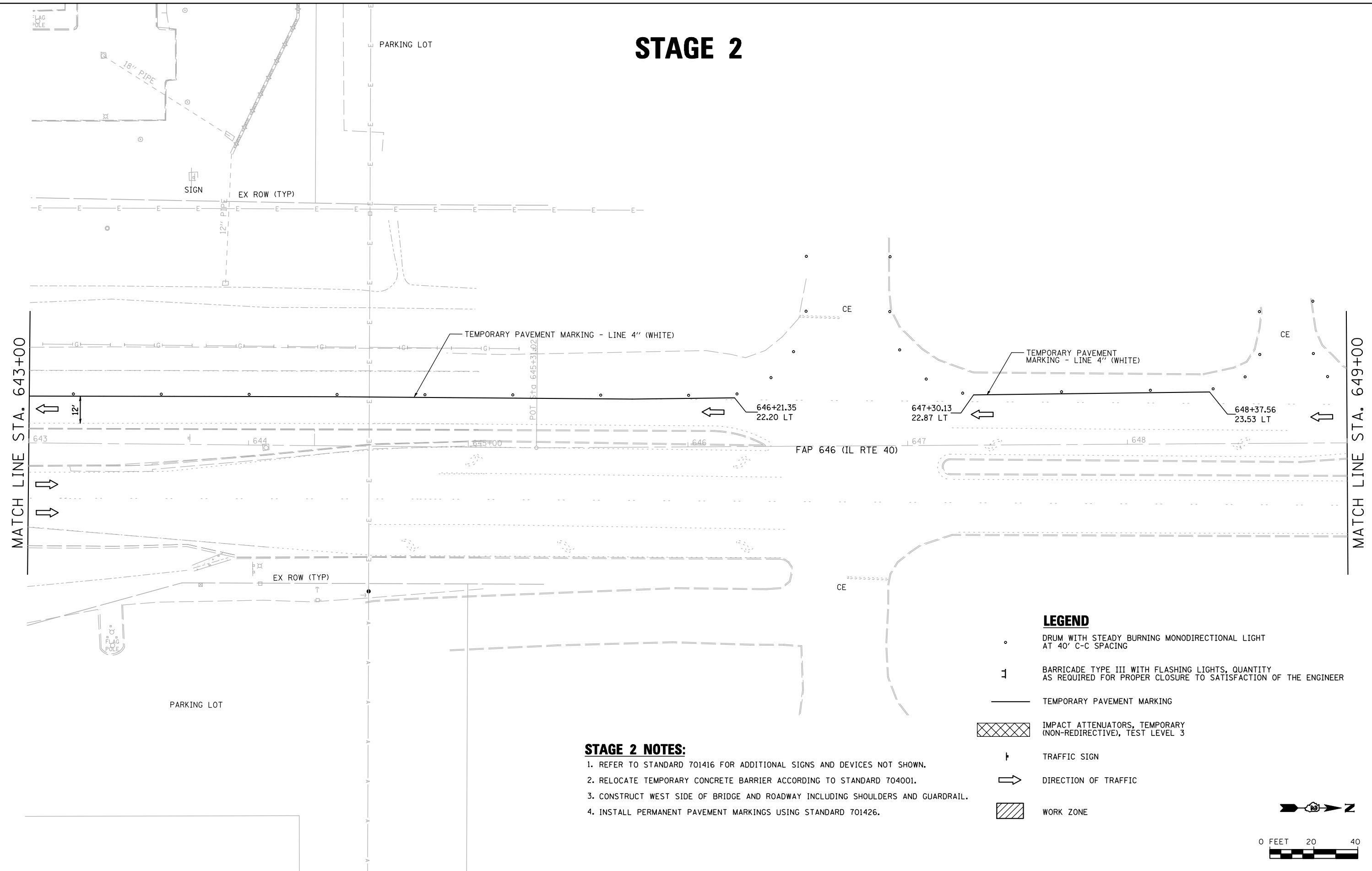


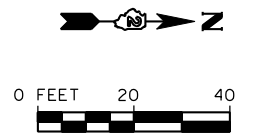
STAGE 2



LEGEND

- DRUM WITH STEADY BURNING MONODIRECTIONAL LIGHT AT 40' C-C SPACING
- ⊥ BARRICADE TYPE III WITH FLASHING LIGHTS, QUANTITY AS REQUIRED FOR PROPER CLOSURE TO SATISFACTION OF THE ENGINEER
- TEMPORARY PAVEMENT MARKING
- ▨ IMPACT ATTENUATORS, TEMPORARY (NON-REDIRECTIVE), TEST LEVEL 3
- ⊥ TRAFFIC SIGN
- ➔ DIRECTION OF TRAFFIC
- ▨ WORK ZONE

- STAGE 2 NOTES:**
- REFER TO STANDARD 701416 FOR ADDITIONAL SIGNS AND DEVICES NOT SHOWN.
 - RELOCATE TEMPORARY CONCRETE BARRIER ACCORDING TO STANDARD 704001.
 - CONSTRUCT WEST SIDE OF BRIDGE AND ROADWAY INCLUDING SHOULDERS AND GUARDRAIL.
 - INSTALL PERMANENT PAVEMENT MARKINGS USING STANDARD 701426.



FILE NAME = s:\p1\6380--6395\6346\025\macro\sh\0264C17-sh2-stage2.dgn



USER NAME = vanessam	DESIGNED - VLF	REVISED -
	DRAWN - DJW	REVISED -
PLOT SCALE = 40.0000' / IN.	CHECKED - MAG	REVISED -
PLOT DATE = 10/15/2012	DATE - 10-12-12	REVISED -

**STATE OF ILLINOIS
DEPARTMENT OF TRANSPORTATION**

MAINTENANCE OF TRAFFIC STAGE 2			
SCALE: 1" = 20'	SHEET 20	OF 21 SHEETS	STA. 643+00 TO STA. 649+00

F.A.P. RTE.	SECTION	COUNTY	TOTAL SHEETS	SHEET NO.
646	101 BR-3	WHITESIDE	113	50
CONTRACT NO. 64C17				
FED. ROAD DIST. NO. 2 ILLINOIS FED. AID PROJECT				