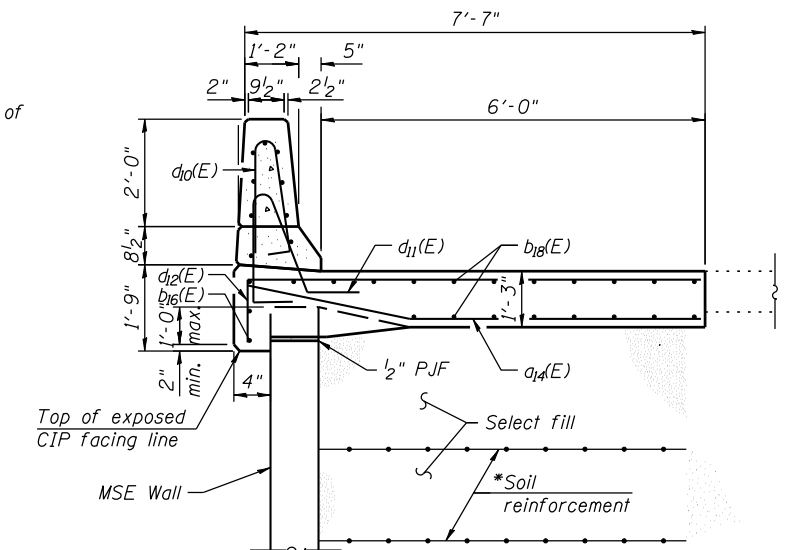


Notes:
 See Sheet 15 of 35 for Views E-E.
 See Sheet 16 of 35 for Sections G-G, H-H, and I-I.
 Bars indicated thus 20x3-#5 etc. indicates 20 lines of bars with 3 lengths per line.
 Median to be constructed in Stage II.
 Tilt #9 b₁₁(E) bars as required to maintain clearance.

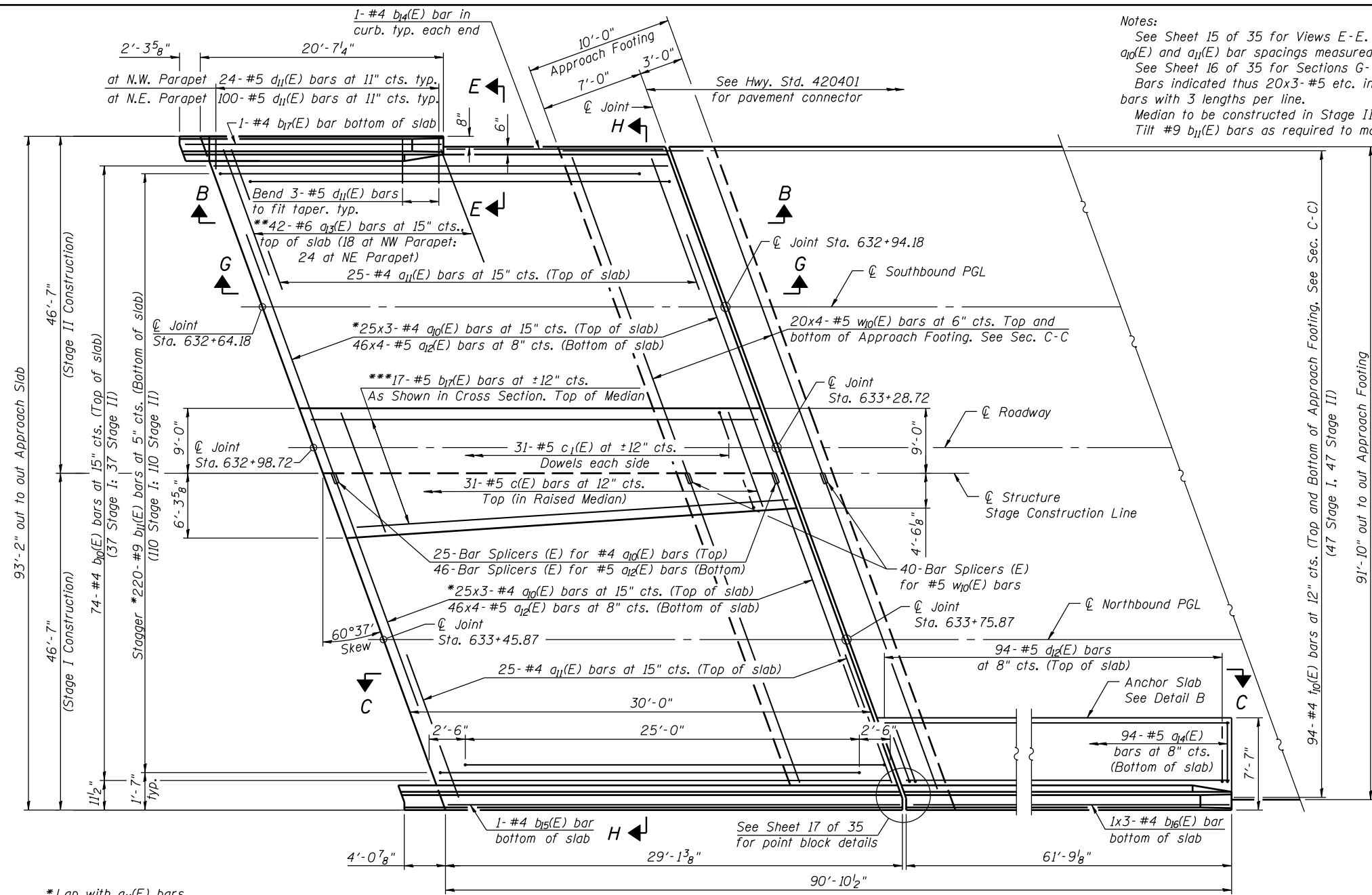


DETAIL B
 *The MSE Wall supplier's internal stability design shall account for the anchorage slab's bearing pressure surcharge of 1.0 ksf and horizontal sliding force of 0.5 kips/ft. of wall

**NORTH APPROACH
 BILL OF MATERIAL**

Bar	No.	Size	Length	Shape
a ₁₀ (E)	150	#4	25'-6"	—
a ₁₁ (E)	50	#4	25'-11"	—
a ₁₂ (E)	368	#5	25'-9"	—
a ₁₃ (E)	42	#6	6'-6"	—
a ₁₄ (E)	94	#5	7'-3"	—
b ₁₀ (E)	74	#4	29'-8"	—
b ₁₁ (E)	220	#9	29'-9"	—
b ₁₄ (E)	1	#4	20'-3"	—
b ₁₅ (E)	1	#4	28'-9"	—
b ₁₆ (E)	3	#4	21'-11"	—
b ₁₇ (E)	1	#5	9'-1"	—
b ₁₈ (E)	48	#4	26'-6"	—
c(E)	31	#5	31'-6"	—
c ₁ (E)	62	#5	1'-7"	—
d ₁₀ (E)	132	#5	5'-7"	—
d ₁₁ (E)	124	#5	7'-11"	—
d ₁₂ (E)	94	#5	8'-6"	—
e ₁₁ (E)	14	#4	11'-1"	—
e ₁₂ (E)	28	#4	15'-0"	—
e ₁₄ (E)	1	#8	22'-7"	—
e ₁₅ (E)	2	#8	33'-4"	—
e ₁₆ (E)	14	#4	16'-3"	—
e ₁₇ (E)	1	#8	32'-10"	—
e ₁₈ (E)	1	#4	22'-7"	—
e ₁₉ (E)	2	#4	31'-9"	—
e ₂₀ (E)	1	#4	32'-10"	—
t ₁₀ (E)	188	#4	20'-0"	—
w ₁₀ (E)	320	#5	25'-6"	—
Concrete Superstructure		Cu. Yd.	207	
Concrete Structures		Cu. Yd.	58	
Reinforcement Bars, Epoxy Coated		Pound	43,780	****
Reinforcement Bars, Epoxy Coated		Pound	11,030	*****

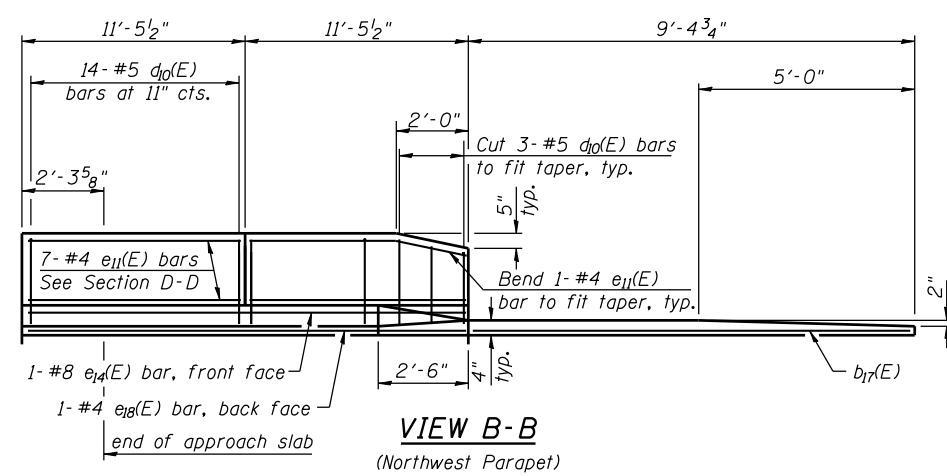
**** Included in Superstructure quantity
 ***** Included in Substructure quantity



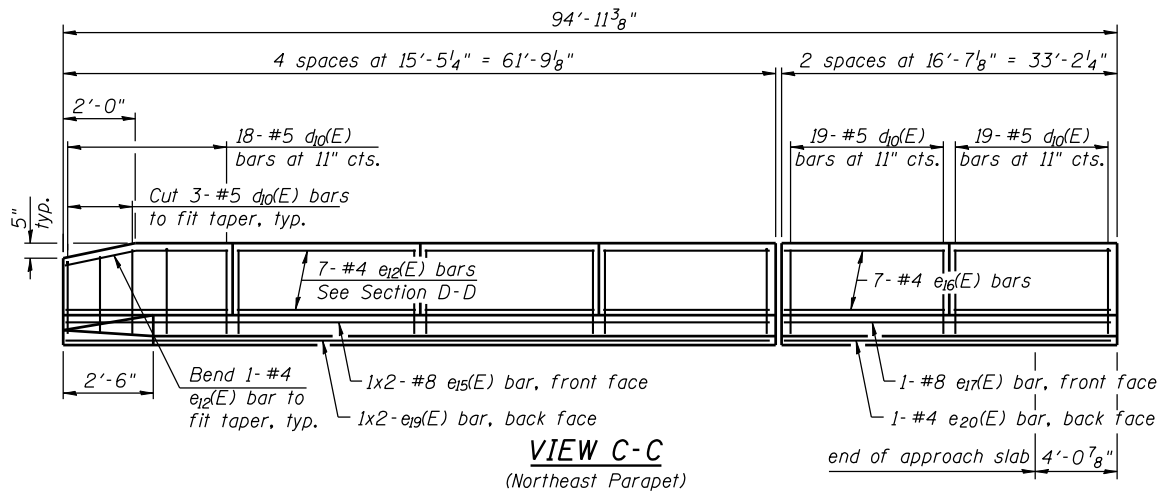
NORTH PLAN

MIN. BAR LAP
 (Approach Slab)
 #4 bar = 2'-4"
 #5 bar = 2'-7"

MIN. BAR LAP
 (Parapet)
 #4 bar = 2'-0"
 #8 bar = 5'-2"



VIEW B-B
 (Northwest Parapet)



VIEW C-C
 (Northeast Parapet)

FILE NAME = S:\JUL163200-63999\6346\025\Micro\oa\Sh\Struct\Struct\Plans\0980015-64C17-014-BAP.dgn

SA STRAND ASSOCIATES
 1170 SOUTH HOUBOLT ROAD
 JOLIET, ILLINOIS 60431
 (815) 744-4200
 IDFPR NO. 184-001273

USER NAME = rjgnd
 DESIGNED - MJD
 CHECKED - AJS
 PLOT SCALE =
 PLOT DATE = 12/11/2012

DRAWN - BJF
 CHECKED - RRD

REVISED
 REVISED
 REVISED
 REVISED

**STATE OF ILLINOIS
 DEPARTMENT OF TRANSPORTATION**

**BRIDGE APPROACH PAVEMENT (1 OF 3)
 STRUCTURE NO. 098-0015**

SHEET NO. 14 OF 35 SHEETS

F.A.P. RTE.	SECTION	COUNTY	TOTAL SHEETS	SHEET NO.
646	101 BR-3	WHITESIDE	113	70

CONTRACT NO. 64C17
 ILLINOIS FED. AID PROJECT