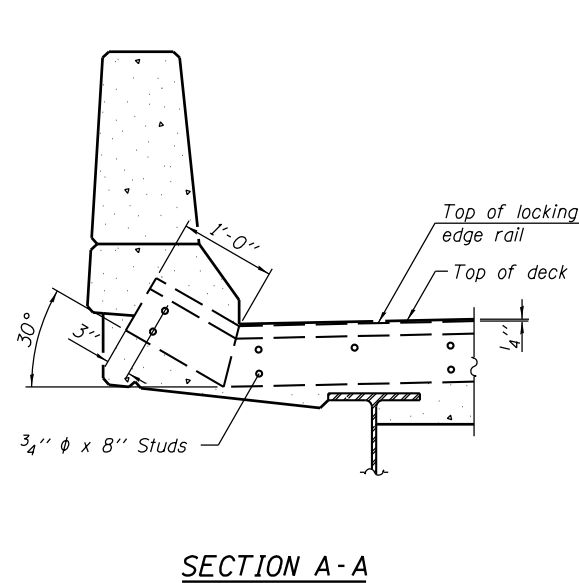
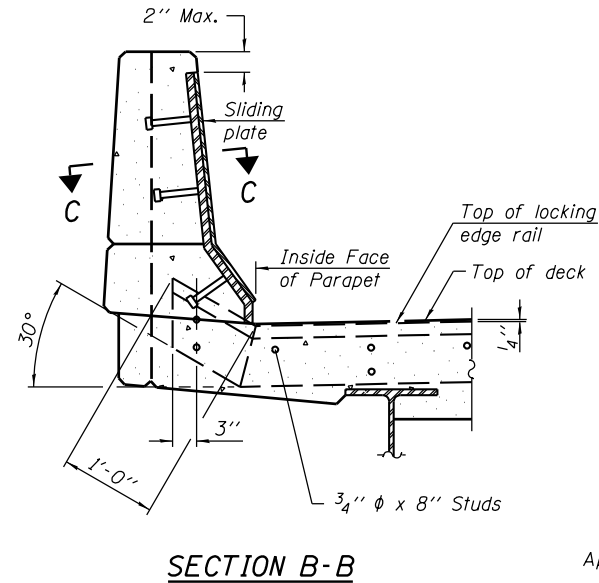


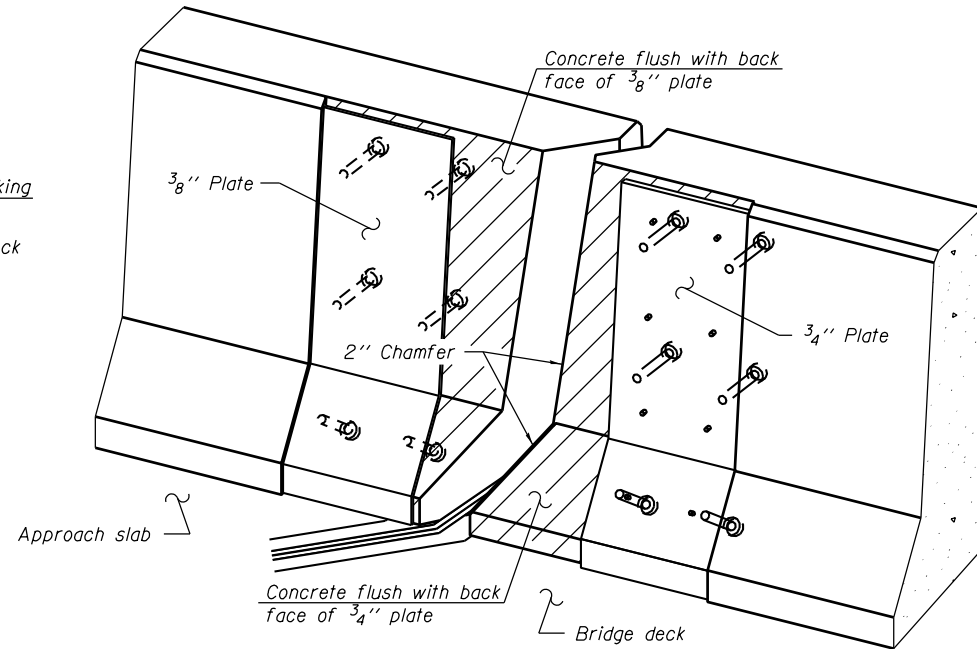
TYPICAL END TREATMENT AT SIDEWALK OR MEDIAN
 Shorter plates with a single row of studs at 12" cts. may be necessary on medians which are shallower than 9". See manufacturer's recommendation.



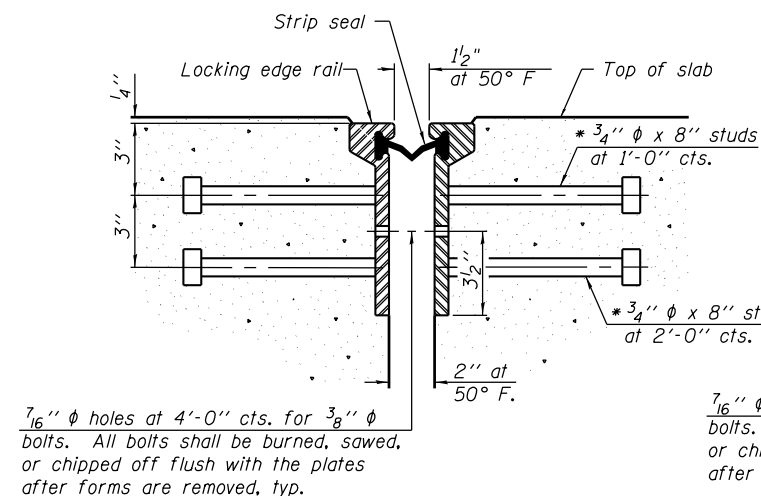
SECTION A-A



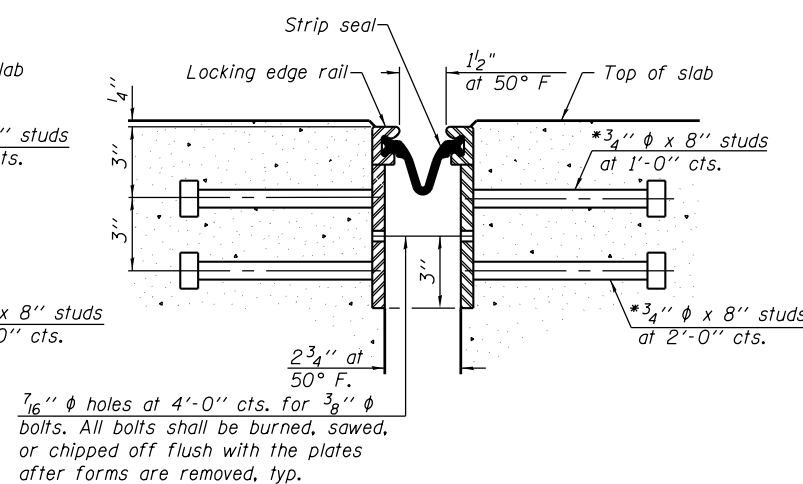
SECTION B-B



TRIMETRIC VIEW (Showing back plates only)



SECTION THRU ROLLED RAIL JOINT

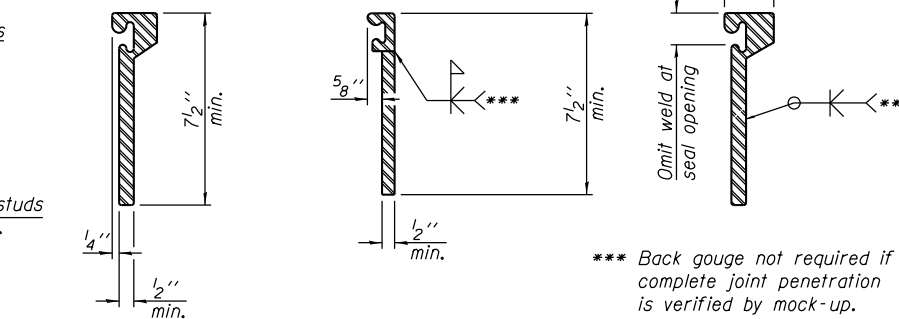


SECTION THRU WELDED RAIL JOINT

7/16" φ holes at 4'-0" cts. for 3/8" φ bolts. All bolts shall be burned, sawed, or chipped off flush with the plates after forms are removed, typ.

7/16" φ holes at 4'-0" cts. for 3/8" φ bolts. All bolts shall be burned, sawed, or chipped off flush with the plates after forms are removed, typ.

* Granular or solid flux filled headed studs conforming to Article 1006.32 of the Std. Specs., automatically end welded.



ROULDED EXTRUDED RAIL WELDED RAIL

LOCKING EDGE RAIL SPLICE
 The inside of the locking edge rail groove shall be free of weld residue.
 Rolled rail shown, welded rail similar.

LOCKING EDGE RAILS

BILL OF MATERIAL

Item	Unit	Total
Preformed Joint Strip Seal	Foot	378

FILE NAME = S:\JUL16300-6399\6346\025\Micro\Sh\Structural\Plans\0980015-64C17-017-FJS.dgn

EJ-SSJ

1-27-12

SA STRAND ASSOCIATES
 1170 SOUTH HOUBOLT ROAD
 JOLIET, ILLINOIS 60431
 (815) 744-4200
 IDPR NO. 184-00123

USER NAME = dennisw
 PLOT SCALE =
 PLOT DATE = 12/3/2012

DESIGNED - RRD
 CHECKED - AJS
 DRAWN - BJF
 CHECKED - RRD

REVISED
 REVISED
 REVISED
 REVISED

STATE OF ILLINOIS DEPARTMENT OF TRANSPORTATION

PREFORMED JOINT STRIP SEAL STRUCTURE NO. 098-0015

SHEET NO. 17 OF 35 SHEETS

F.A.P. RTE.	SECTION	COUNTY	TOTAL SHEETS	SHEET NO.
646	101 BR-3	WHITESIDE	113	73
				CONTRACT NO. 64C17

ILLINOIS FED. AID PROJECT