

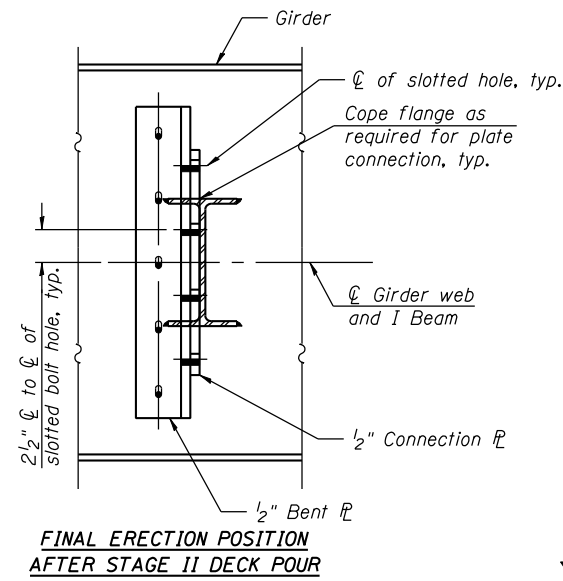
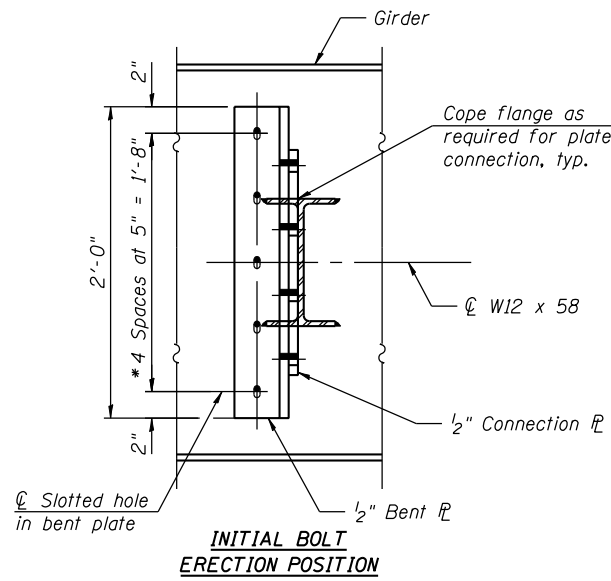
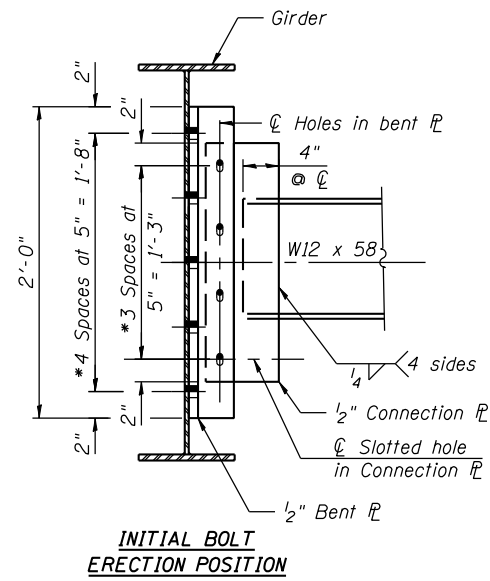
GENERAL NOTES

All cross frames or diaphragms shall be installed as steel is erected and secured with erection pins and bolts except as otherwise noted. Individual cross frames or diaphragms at supports may be temporarily disconnected to install bearing anchor rods.

Load carrying components designated "NTR" shall conform to the "Impact Testing Requirements, Zone 2".

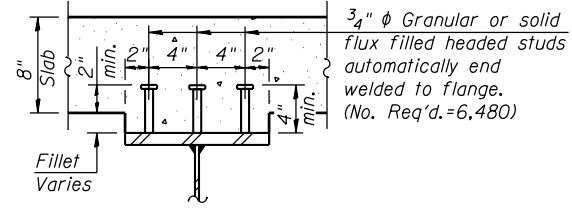
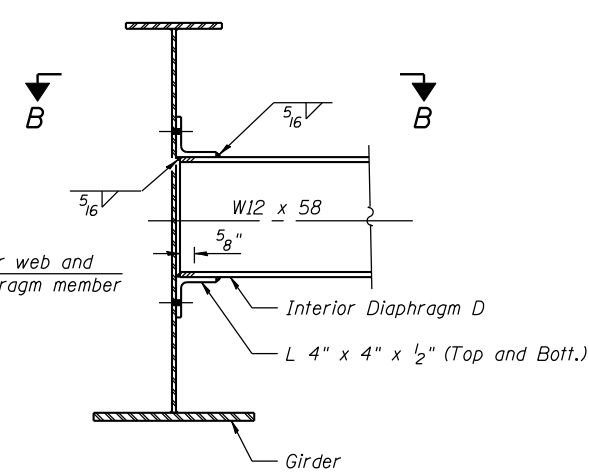
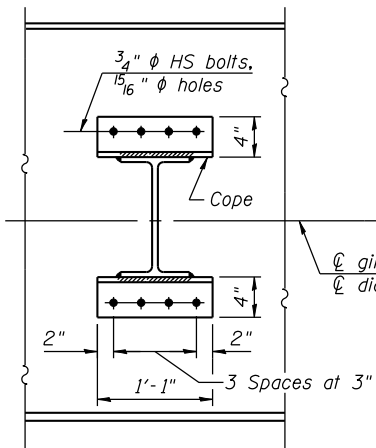
Two hardened washers required for each set of oversized holes.

Bolts in slots shall be finger tight until the second stage pour is complete and fully tightened after completion of the deck pour for Stage II Construction. Position slots so bolts start at the end with no concrete load and finish near the opposite end under deck load, allowing maximum displacement without laterally stressing main members.

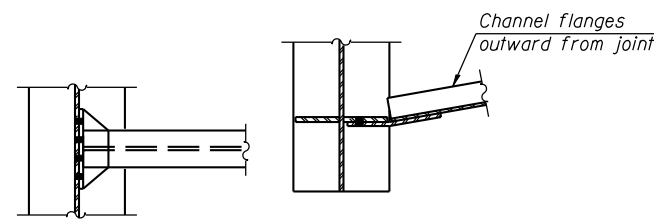


INTERIOR DIAPHRAGM D₁

*Use 1³/₁₆" x 1⁷/₈" long-slotted vertical holes for the diaphragms along the Stage Construction Line at beam 8. Long-slotted holes shall be utilized in the bent plate at the web and in the connection plate. Slotted holes shall not be used in the beam web.

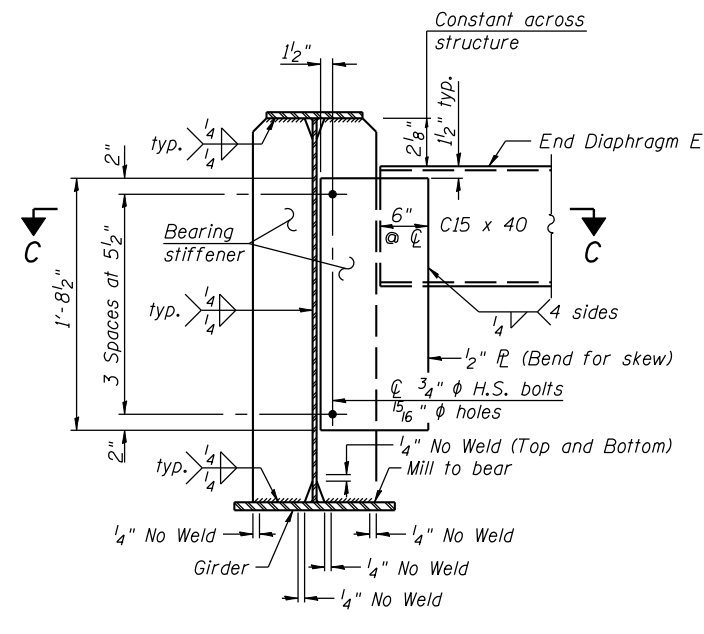


SECTION A-A

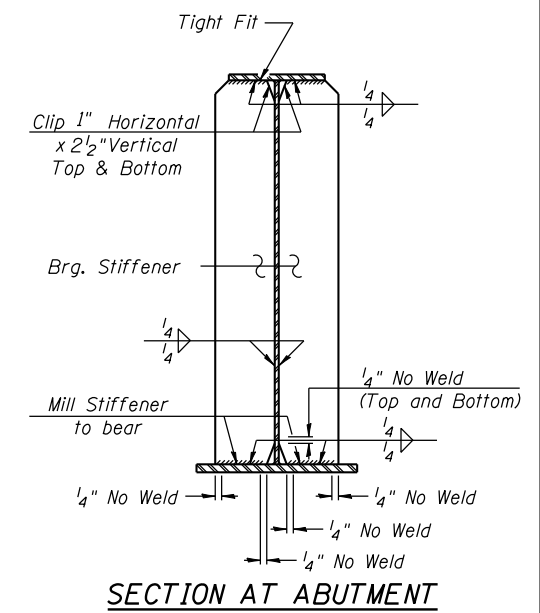


SECTION B-B

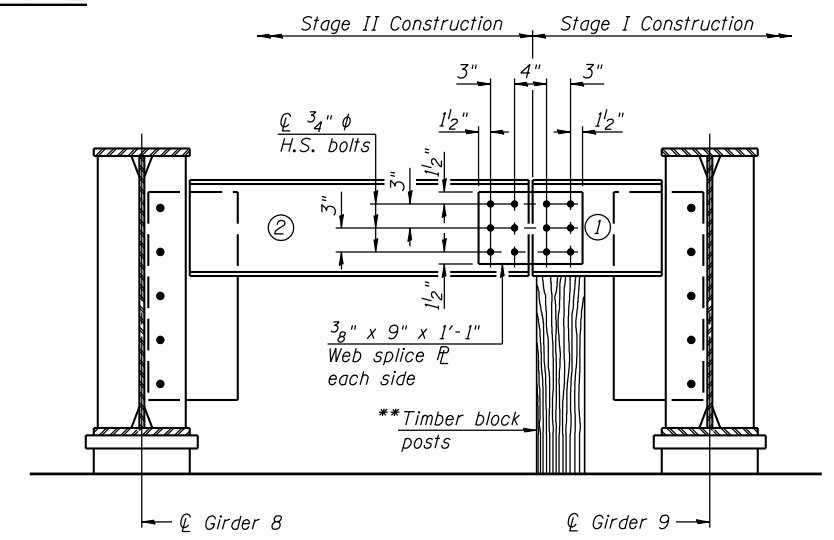
SECTION C-C



END DIAPHRAGM E



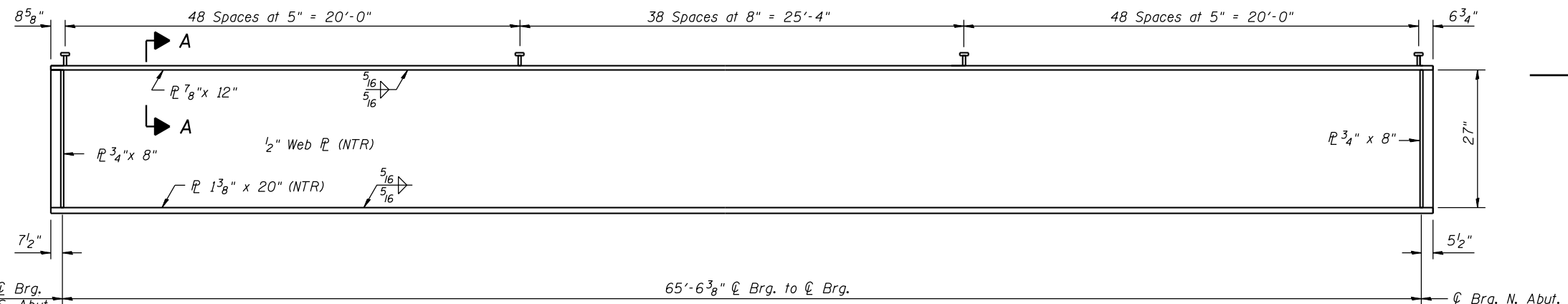
SECTION AT ABUTMENT



END DIAPHRAGM **Cost of Timber Block Posts is included with Structural Steel.

END DIAPHRAGM STAGE CONSTRUCTION SEQUENCE

- 1.) Order diaphragm in two sections.
- 2.) Attach section ① of diaphragm to girder.
- 3.) Place timber block posts between section ① of diaphragm and abutment bearing section.
- 4.) Attach section ② of diaphragm to both girder 8 and section ① of diaphragm during stage II construction with splice plates.
- 5.) Remove timber block posts.



GIRDER ELEVATION

FILE NAME = S:\JOL\63300-6399\6346\025\Micro\Sh\Structural\Plans\0900015-64C17-019-BE.AK.dgn

SA STRAND ASSOCIATES
1170 SOUTH HOUBOLT ROAD
JOLIET, ILLINOIS 60431
(815) 744-4200
IDFPR NO. 184-001273

USER NAME = rjgnd
DESIGNED - RRD
CHECKED - AJS
DRAWN - BJF
CHECKED - RRD
PLOT SCALE =
PLOT DATE = 12/10/2012

DESIGNED - RRD
CHECKED - AJS
DRAWN - BJF
CHECKED - RRD
REVISED
REVISED
REVISED
REVISED

**STATE OF ILLINOIS
DEPARTMENT OF TRANSPORTATION**

**BEAM DETAILS
STRUCTURE NO. 098-0015**
SHEET NO. 19 OF 35 SHEETS

F.A.P. RTE.	SECTION	COUNTY	TOTAL SHEETS	SHEET NO.
646	101 BR-3	WHITESIDE	113	75
CONTRACT NO. 64C17				

ILLINOIS FED. AID PROJECT