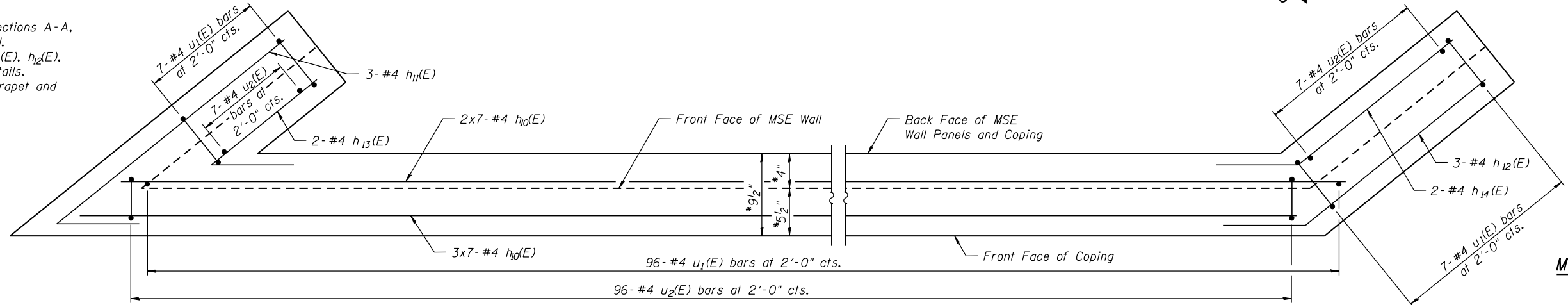


**MSE WALL PLAN**

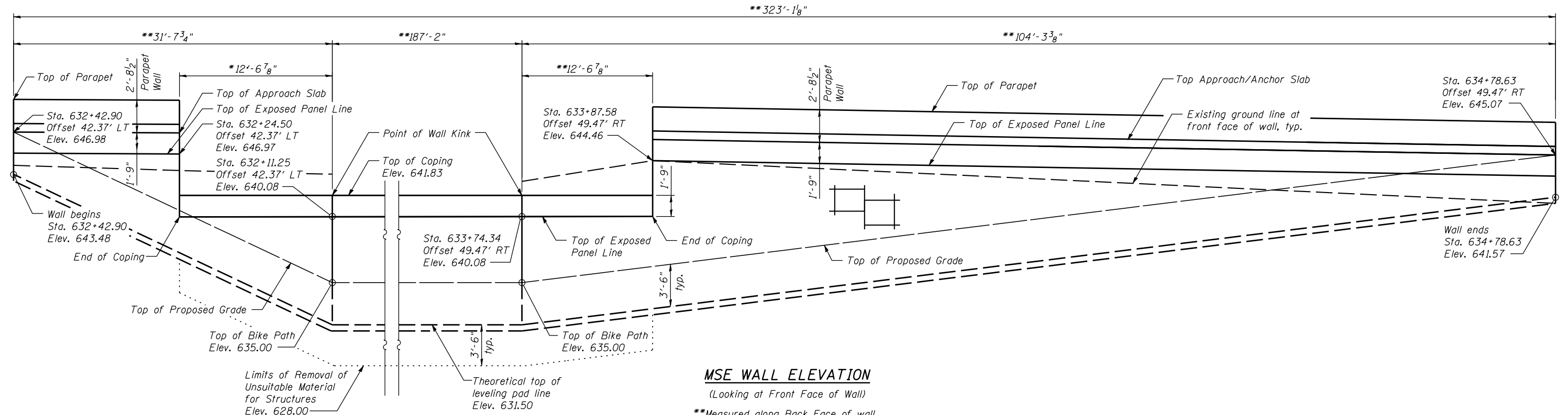
Note:  
 See Sheet 24 of 35 for Sections A-A, B-B, C-C, and Bill of Material.  
 See Sheet 24 of 35 for  $h_{11}(E)$ ,  $h_{12}(E)$ ,  $h_{13}(E)$ ,  $h_{14}(E)$  and  $u_1(E)$  bar details.  
 See Sheet 14 of 35 for Parapet and Anchor Slab details.



**COPING REINFORCEMENT PLAN**

\*Dimensions to be verified by MSE Wall Manufacturer.

**MIN. BAR LAP**  
 #4 bar = 2'-11"



**MSE WALL ELEVATION**

(Looking at Front Face of Wall)

\*\*Measured along Back Face of wall

FILE NAME = s:\p1\6380--6395\6346\025\Micro\Sh\Structural\Plans\0980015-64C17-023-MSE1.dgn

**SA STRAND ASSOCIATES**  
 1170 SOUTH HOUBOLT ROAD  
 JOLIET, ILLINOIS 60431  
 (815) 744-4200  
 IDFPR NO. 184-00123

USER NAME = briant  
 DESIGNED - RRD  
 CHECKED - AJS  
 DRAWN - BJF  
 CHECKED - RRD  
 PLOT SCALE =  
 PLOT DATE = 10/12/2012

DESIGNED - RRD  
 CHECKED - AJS  
 DRAWN - BJF  
 CHECKED - RRD

REVISED  
 REVISED  
 REVISED  
 REVISED

**STATE OF ILLINOIS  
 DEPARTMENT OF TRANSPORTATION**

**MSE WALL DETAILS (1 OF 2)  
 STRUCTURE NO. 098-0015**

SHEET NO. 23 OF 35 SHEETS

F.A.P. RTE.	SECTION	COUNTY	TOTAL SHEETS	SHEET NO.
646	101 BR-3	WHITESIDE	113	79
CONTRACT NO. 64C17			ILLINOIS FED. AID PROJECT	