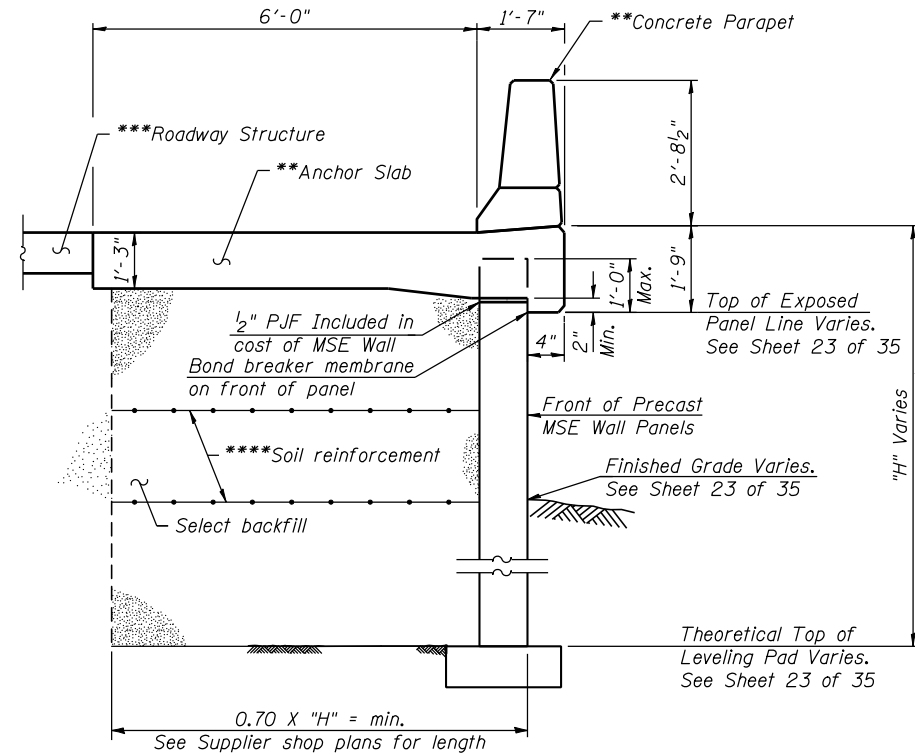
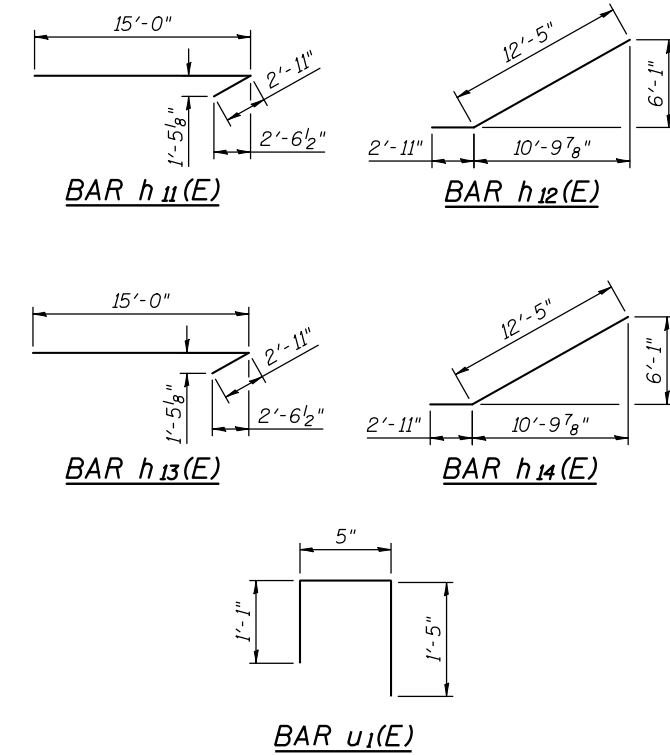


**SECTION A-A**



**SECTION B-B**



**BILL OF MATERIAL**

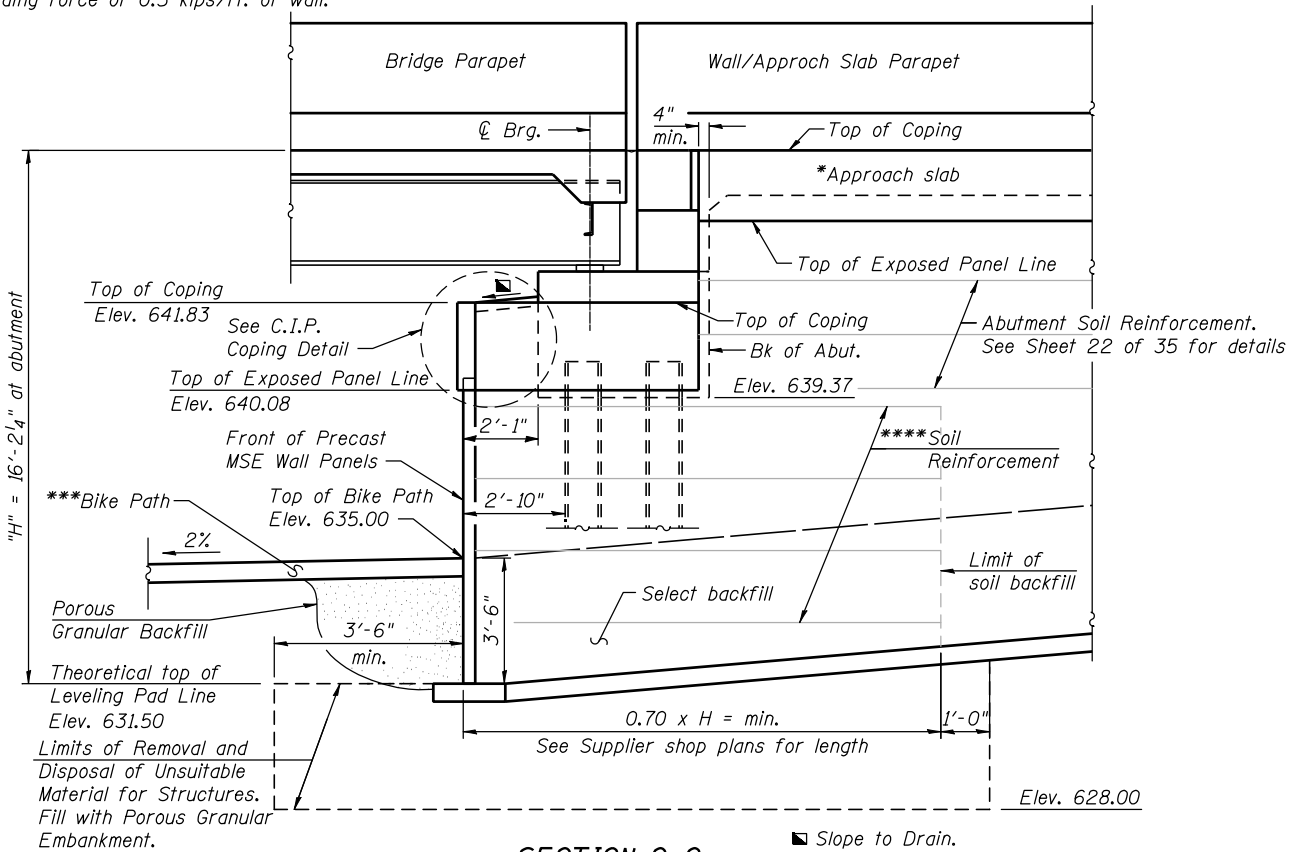
Item	Unit	Total
Mechanically Stabilized Earth Retaining Wall	Sq. Ft.	2,472

**C.I.P. COPING BILL OF MATERIAL \*\*\*\*\***

Bar	No.	Size	Length	Shape
h <sub>10</sub> (E)	35	#4	29'-8"	—
h <sub>11</sub> (E)	3	#4	17'-11"	—
h <sub>12</sub> (E)	3	#4	15'-4"	—
h <sub>13</sub> (E)	2	#4	15'-6"	—
h <sub>14</sub> (E)	2	#4	15'-1"	—
u <sub>1</sub> (E)	110	#4	2'-11"	└
u <sub>2</sub> (E)	110	#4	1'-5"	—
Concrete Structures		Cu. Yd.		13.7
Reinforcement Bars, Epoxy Coated		Pound		1,120
Concrete Sealer		Sq. Ft.		836

\*\*\*\*\* For information only. Cost of C.I.P. Coping and Coping Seal Concrete including: Concrete Structures, Reinforcing Bars, Epoxy Coated, and Concrete Sealer will be included for payment in the contract unit price for Mechanically Stabilized Earth Retaining Walls.

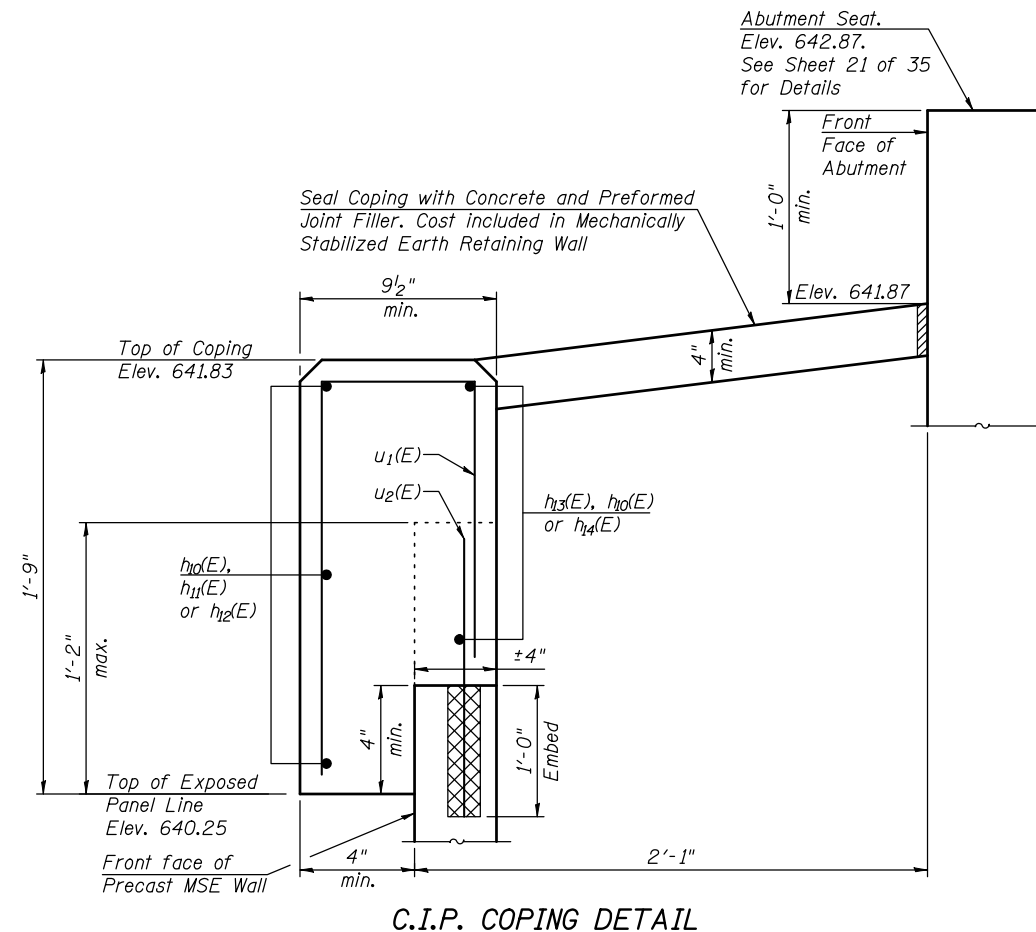
\* See Sheet 14, 15 and 16 of 35 for Details.  
 \*\* See Sheet 14 and 15 of 35 for Details.  
 \*\*\* See Roadway Plans for Details.  
 \*\*\*\* The MSE wall supplier's internal stability design shall account for the anchorage slab's bearing pressure surcharge of 1.0 ksf and horizontal sliding force of 0.5 kips/ft. of wall.



**SECTION C-C**

(Looking West)  
 (Horizontal Dimensions @ Rt. L's)

Note: Existing Foundation not shown for clarity.



**C.I.P. COPING DETAIL**

FILE NAME = s:\p1\6380--6395\6346\025\Macro\Sh\Structural\Plans\0980015-64C17-023-MSE2.dgn