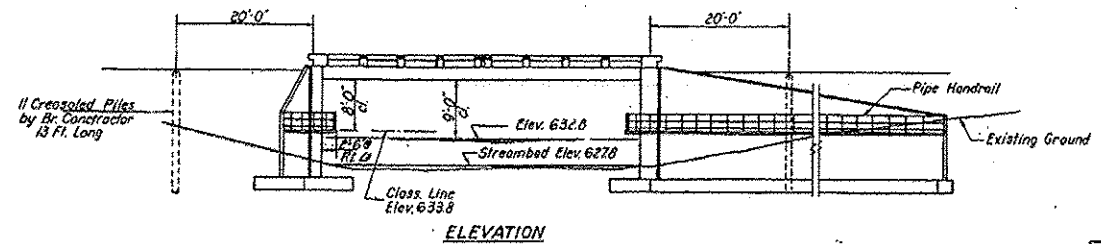


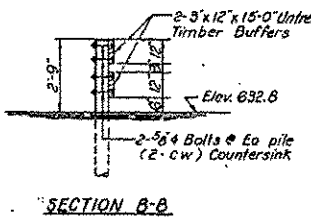
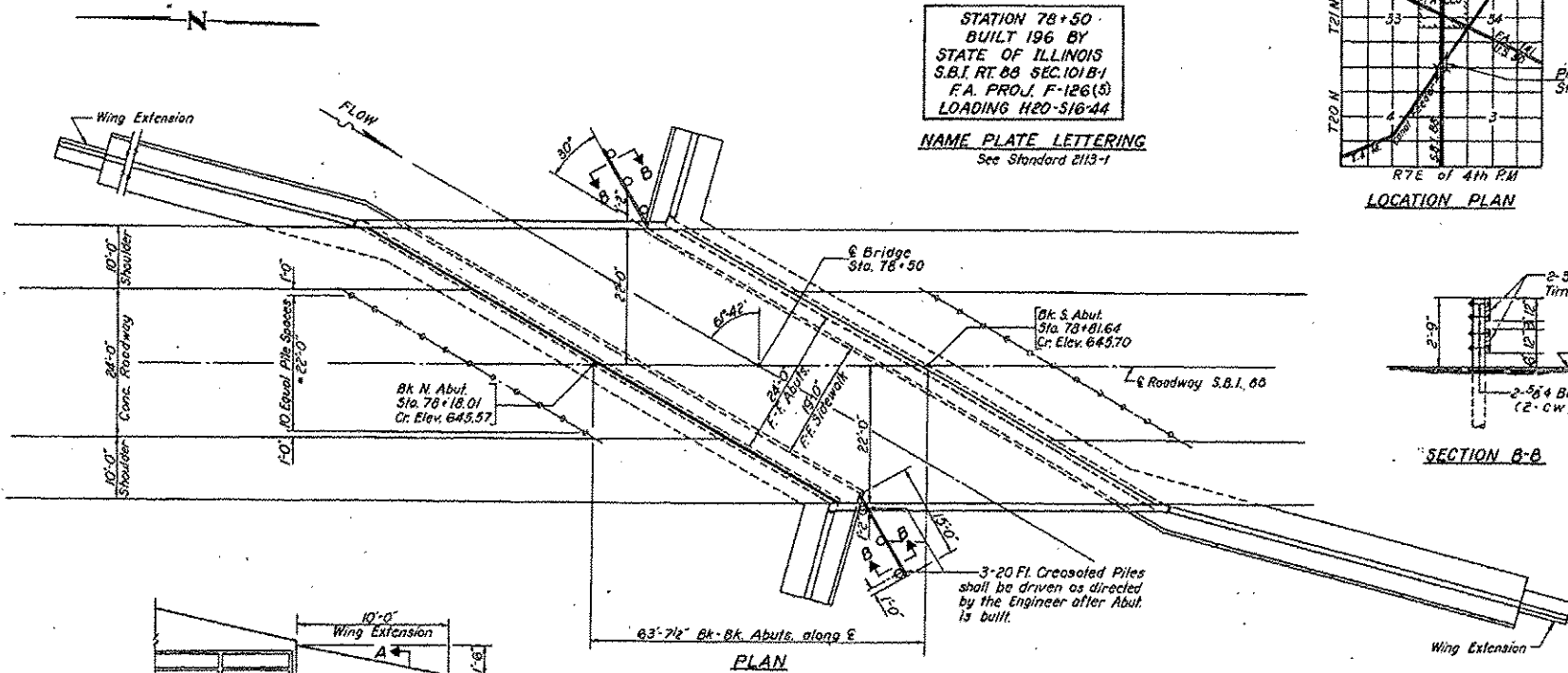
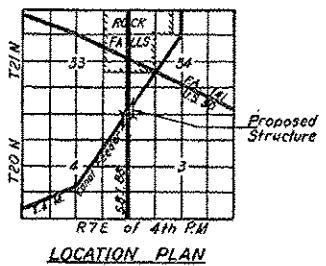
B.M.: Bronze tablet in N.W. cor. Canal Bridge  
 Rt. Sta. 77+48 El. 647.96  
 Existing Structure: 110' through Truss & 20' 21'-0" I-Beam Approach,  
 Conc. Abut., Piers & Columns, 16'-6" Rwy. width, Amber floor.  
 To be removed by Bridge Contractor before  
 construction of new Bridge. No Salvage.

STATE OF ILLINOIS  
 DEPARTMENT OF PUBLIC WORKS & BUILDINGS  
 DIVISION OF HIGHWAYS

PROJECT NO.	SECTION	SHEET	TOTAL SHEETS
098-0015	JOI-BB-3	31	113
PROJECT NAME			6-126(5)



STATION 78+50  
 BUILT 196 BY  
 STATE OF ILLINOIS  
 S.B.I. RT. 88 SEC. 101B-1  
 F.A. PROJ. F-126(5)  
 LOADING H20-S16-44  
 NAME PLATE LETTERING  
 See Standard 2113-1

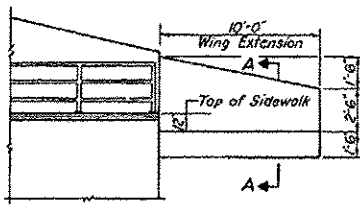


**GENERAL NOTES**  
 The concrete floor slab shall be finished in accordance with Article 51.19 of the Standard Specifications.  
 The sidewalk shall be finished in accordance with Article 51.17 of the Standard Specifications.  
 The handrail concrete in the rail posts and railing shall be poured in separate operations.  
 All reinforcement bars shall be lapped 20 diameters unless otherwise shown.  
 For Item "Precast Prestressed Concrete Bridge Beams" see Special Provisions.  
 Strand used as prestressing element shall be non-galvanized high strength, stress-relieved, 7-wire strand. The nominal diameter of the strand shall not exceed 7/8" and the nominal cross-sectional area shall be 2.1089 square inch.  
 The horizontal exposed surfaces of the expansion guards shall be given two shop coats of red lead paint, the contact surfaces shall be given one coat of red lead paint. Anchor studs and vertical faces shall not be painted.  
 Expansion guards are included in quantity of Structural Steel. Estimated Weight = 2600 Lbs.  
 The Contractor shall drive one timber test pile in a permanent location at each abutment as directed by the Engineer before ordering the remainder of piles.  
 The following surfaces of the abutments shall be water-proofed; the backs of the exterior walls above the lower construction joint and the backs of the wings above the tops of the footings.  
 The cost of all timber buffers, connecting hardware, and luminous paint shall be included in the lump sum price bid for Timber Buffers Complete.  
 Permanent forms will not be permitted in forming the concrete floor.  
 Except as otherwise provided, all structural steel and pipe handrail shall receive one shop coat of red lead paint and two field coats of aluminum paint. See Article 56.1 to 56.5 of the Standard Specifications.

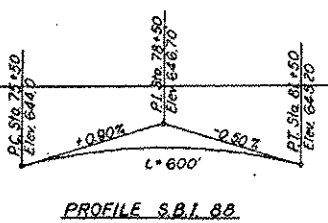
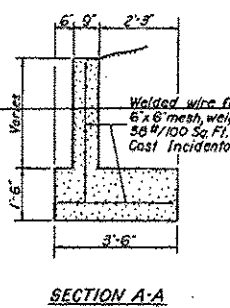
**TOTAL BILL OF MATERIAL**

Item	Unit	Super	Sub	Total
Removal of Existing Structures	Each	1		1
Class B Excavation for Structures	Cu. Yds.		930	930
Structural Steel	Lbs.	2600		2600
Precast Prestressed Concrete Bridge Beams	Lin. Ft.	454		454
Handrail Concrete	Cu. Yds.	3.1		3.1
Class X Concrete	Cu. Yds.	77.8	663.7	741.5
Reinforcement Bars	Lbs.	9680	74,890	84,570
Untreated Piles	Lin. Ft.		3104	3104
Crossed Piles	Lin. Ft.		406	406
Test Piles (Timber)	Each		2	2
Name Plates	Each	1		1
Protective Coat	Sq. Yds.	332		332
Pipe Handrail	Lin. Ft.		380	380
Temporary Bridge Complete	Each		1	1
Timber Buffers Complete	Yrds. Sup.			1.5
Preformed Joint Saver	Lin. Ft.	98		98

\* See Sheets 9 and 10 for details of Temporary Bridge.



**ELEVATION - WING EXTENSION**  
 5.7 Cu. Yds. Class X Concrete included in Substructure Quantities.



**WATERWAY INFORMATION**  
 Flow controlled and W.W. opening has been determined by navigation & recreational requirements.

**DESIGN STRESSES FOR PRESTRESSED BOX BEAMS**  
 $f_c = 5,000$  psi.  
 $f_{cr} = 4,000$  psi.  
 $f_s = 248,000$  psi. (Cables 7/8")  
 $f_{si} = 173,600$  psi.

**DESIGN STRESSES**  
 $f_c = 1,400$  psi. Super  
 $f_c = 1,000$  psi. Sub  
 $f_s = 20,000$  psi. Reinf.  
 $v = 75$  psi. Flgs.  
 $n = 10$   
 LOADING H20-S16-44

PROJ. F-126(5)  
 GENERAL PLAN & ELEVATION  
 ILLINOIS & MISSISSIPPI CANAL FEEDER  
 S.B.I. RT. 88 (FA. 40) SEC. 101B-1  
 WHITESIDE COUNTY  
 STA. 78+50

DESIGNED: Walter R. King  
 CHECKED: J. L. Armstrong  
 DRAWN: J. L. Armstrong  
 EXAMINED: W. C. Baumann  
 PASSED: [Signature]  
 APPROVED: [Signature]

FOR INFORMATION ONLY

Added Sheet 2-20-13

FILE NAME: c:\pwwork\p1\dat\granp\0261271\0287	USER NAME: granp	DESIGNED: -	REVISED: -	STATE OF ILLINOIS DEPARTMENT OF TRANSPORTATION	EXISTING GENERAL PLAN AND ELEVATION STRUCTURE NO. 098-0015	F.A.B. RTE. 696	SECTION JOI-BB-3	COUNTY WHITESIDE	TOTAL SHEETS 113	SHEET NO. 915
Default	PLOT SCALE: 1/8" = 1'-0"	DRAWN: -	REVISED: -		SHEET 35 OF 35 SHEETS				CONTRACT NO. 64C1Z	
	PLOT DATE: Wed Feb 28 15:22:35 2013	CHECKED: -	REVISED: -						ILLINOIS FED. AID PROJECT	