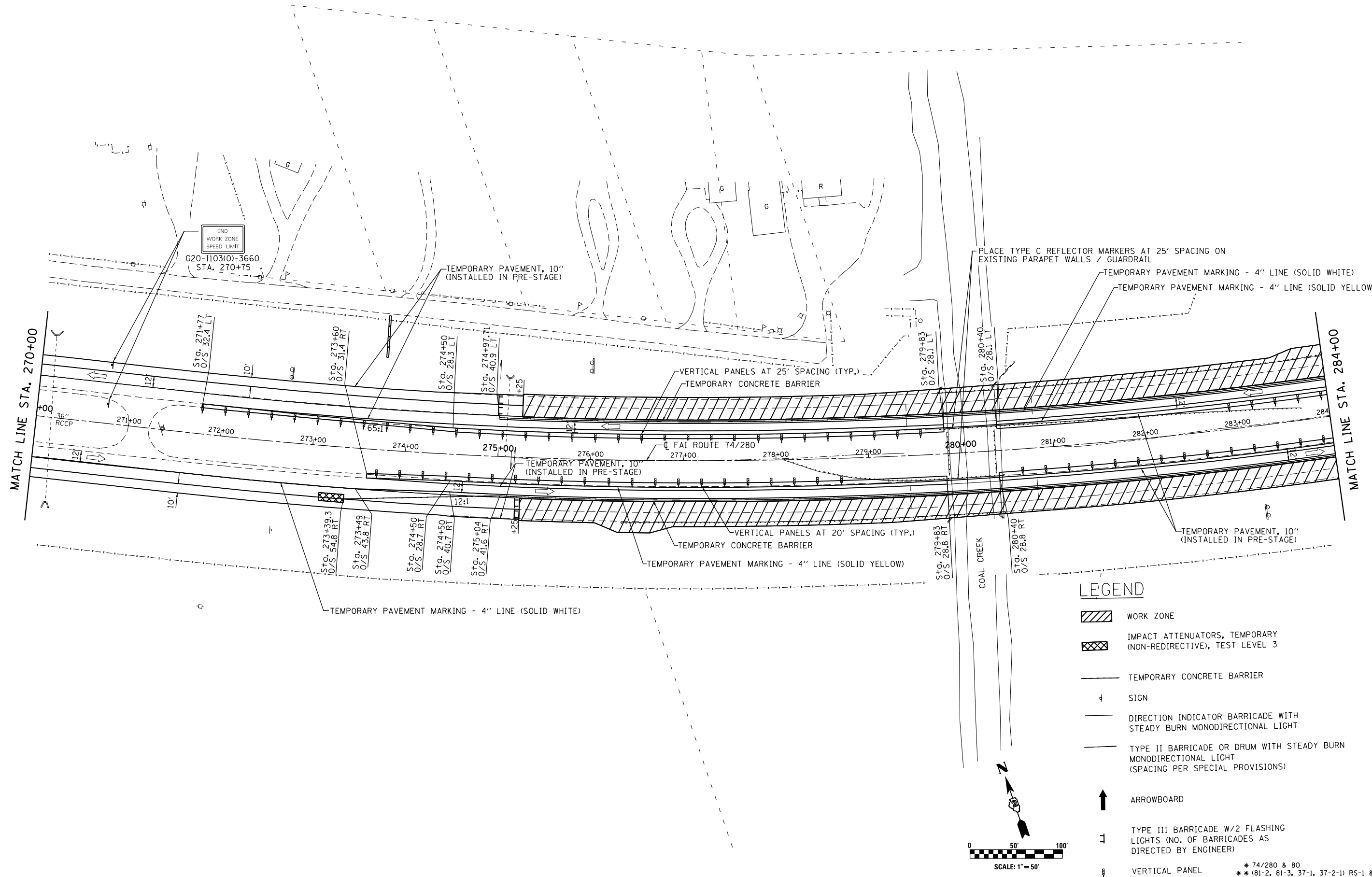


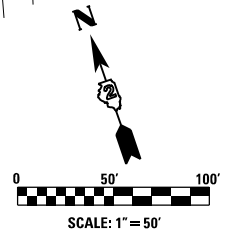
D:\Projects\Rock\_Island\64023.L74.280.Bridge\_Replacement\Over\_Coal\_Creek\Cad\_Spreeman\Phase II\Submittals\100%\_Submittal\CC-DGN\CAD\Civil\CADD\_Sheets\02063077-sht-stagmg1-2.dgn  
 Fri Mar 15 14:17:13 2013



**LEGEND**

- WORK ZONE
- IMPACT ATTENUATORS, TEMPORARY (NON-REDIRECTIVE), TEST LEVEL 3
- TEMPORARY CONCRETE BARRIER
- SIGN
- DIRECTION INDICATOR BARRICADE WITH STEADY BURN MONODIRECTIONAL LIGHT
- TYPE II BARRICADE OR DRUM WITH STEADY BURN MONODIRECTIONAL LIGHT (SPACING PER SPECIAL PROVISIONS)
- ARROWBOARD
- TYPE III BARRICADE W/2 FLASHING LIGHTS (NO. OF BARRICADES AS DIRECTED BY ENGINEER)
- VERTICAL PANEL

\* 74/280 & 80  
 \*\* (81-2, 81-3, 37-1, 37-2-1) RS-1 & 81-3BR  
 \*\*\* ROCK ISLAND/HENRY COUNTY



DESIGNED - GRE	REVISED -
CHECKED - GRE	REVISED -
DRAWN - ST	REVISED -
CHECKED - 3/12/2013	REVISED -

**STATE OF ILLINOIS**  
**DEPARTMENT OF TRANSPORTATION**

**FAI ROUTE 74 / 280 OVER COAL CREEK**  
**MAINTENANCE OF TRAFFIC PLAN - STAGE 1**  
 SCALE: 1"=50'      SHEET NO. OF SHEETS STA. 270+00 TO STA. 284+00

F.A.I. RTE.	SECTION	COUNTY	TOTAL SHEETS	SHEET NO.
*	**	***	290	152
CONTRACT NO. 64D23				
ILLINOIS FED. AID PROJECT				