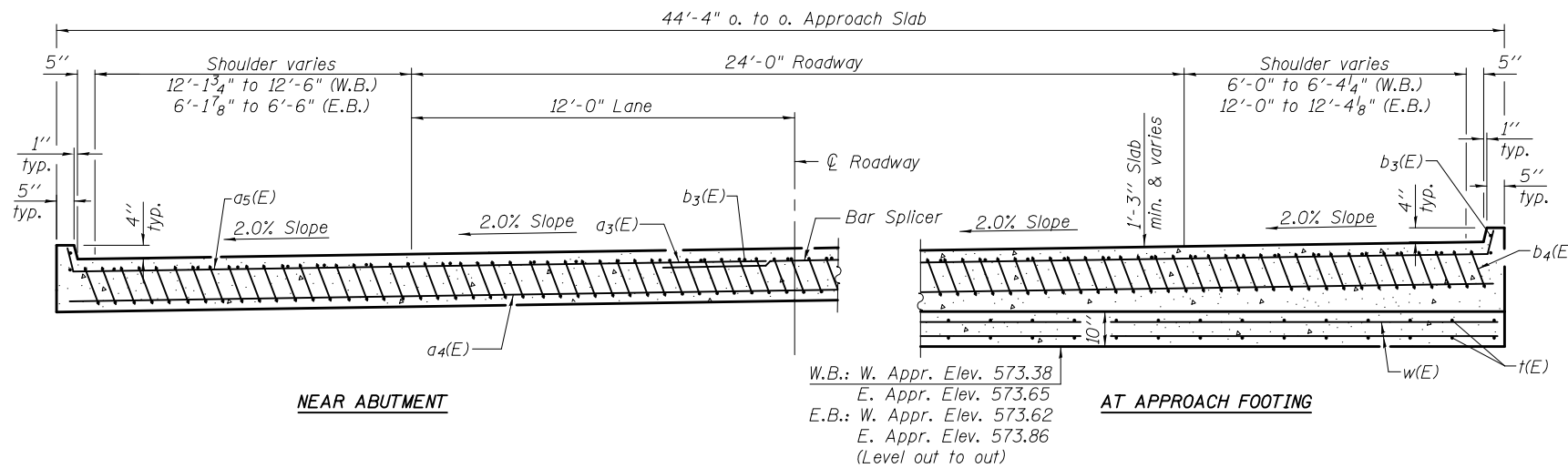


Notes:

See sheet 19 of 38 for Detail A and View B-B.
 Approach slab shall be paid for as Concrete Superstructure.
 Approach footing concrete shall be paid for as Concrete Structures.
 Reinforcement shall be paid for as Reinforcement Bars, Epoxy Coated.
 For v(E) bar details, see sheet 20 of 38.
 The approach footing maximum applied service bearing pressure (Qmax) = 2.0 ksf.
 For bar splicer details, see sheet 33 of 38.
 Cost of excavation for approach footing included with Concrete Structures.
 For Granular Backfill for Structures and drainage treatment details, see sheet 2 of 38.
 For additional parapet details, see sheet 17 of 38.

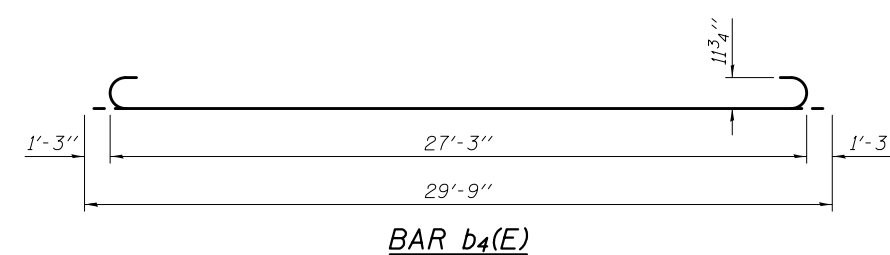
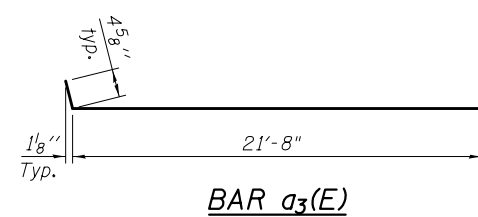
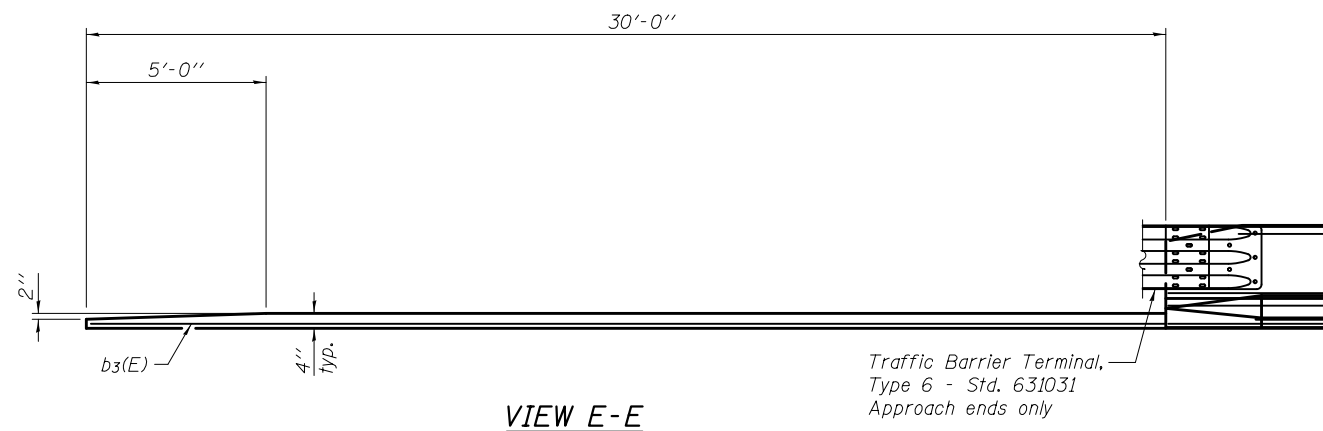


* Tilt #9 b4(E) bars as required to maintain clearance.

*** Cost included with Concrete Superstructure.

**FOUR APPROACHES
 BILL OF MATERIAL
 (E.B. & W.B. STRUCTURES)**

Bar	No.	Size	Length	Shape
a3(E)	200	#4	22'-5"	┌───┐
a4(E)	368	#5	21'-10"	┌───┐
b3(E)	152	#4	29'-8"	┌───┐
b4(E)	424	#9	29'-9"	┌───┐
t(E)	368	#4	9'-8"	┌───┐
w(E)	320	#5	21'-10"	┌───┐
Concrete Structures			Cu. Yd.	54.8
Concrete Superstructure			Cu. Yd.	271.3
Bridge Deck Grooving			Sq. Yd.	554
Protective Coat			Sq. Yd.	596
Reinforcement Bars, Epoxy Coated			Pound	66,950



3/19/2013 2:42:03 PM 0810194_64D23_0200_ApprSlabDet.02.dgn



DESIGNED - MWS	REVISED -
CHECKED - BJM	REVISED -
DRAWN - MWS	REVISED -
CHECKED - BJM	REVISED -

STATE OF ILLINOIS
 DEPARTMENT OF TRANSPORTATION

BRIDGE APPROACH SLAB DETAILS
 STRUCTURE NO. 081-0194 (E.B.) AND NO. 081-0195 (W.B.)

SHEET NO. 20 OF 38 SHEETS

F.A.I. RTE.	SECTION	COUNTY	TOTAL SHEETS	SHEET NO.
74/280	81-3BR	ROCK ISLAND	290	183
CONTRACT NO. 64D23				
ILLINOIS FED. AID PROJECT				