

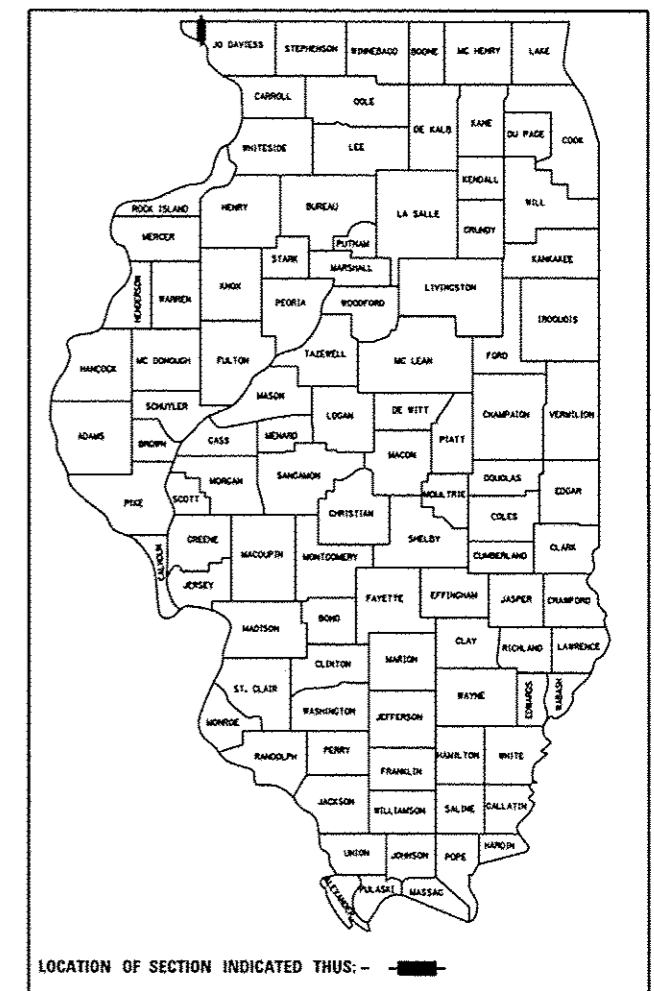
F.A.P. RTE.	SECTION	COUNTY	TOTAL SHEETS	SHEET NO.
570	101T	JODAVIESS	64	1
		ILLINOIS	CONTRACT NO. 64F75	

STATE OF ILLINOIS
DEPARTMENT OF TRANSPORTATION
DIVISION OF HIGHWAYS

PROPOSED
HIGHWAY PLANS

FAP ROUTE 570 (IL 84)
SECTION 101T
PROJECT : F-0570(003)
REMOVAL & REPLACEMENT OF
TWO BOX CULVERTS ALONG IL 84
JODAVIESS COUNTY

D-92-014-10



FOR INDEX OF SHEETS, SEE SHEET NO. 2
FOR STATE STANDARDS, SEE SHEET NO. 2

PROJECT ENDS
STA 1497+75

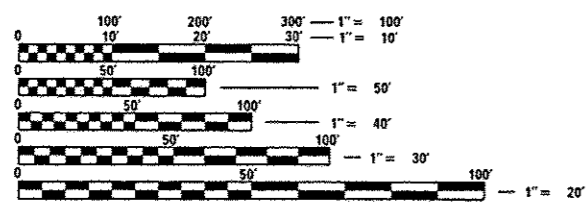
C-92-078-12

EXISTING: SN 043-1008
PROPOSED: SN 043-1100
STA 1494+03 - REMOVE
EXISTING 4'x5' BOX CULVERT
(42'-0") AND CONSTRUCT A
CAST-IN-PLACE 4'x5' BOX
CULVERT (90'-11")

EXISTING: SN 043-C001
PROPOSED: SN 043-1101
STA 1484+99 - REMOVE
EXISTING 3'x3' BOX CULVERT
(61'-10") AND CONSTRUCT
A PRECAST 5'x3' BOX
CULVERT (60'-0")

PROJECT BEGINS
STA 1481+75

VINEGAR HILL TOWNSHIP
SECTION 25

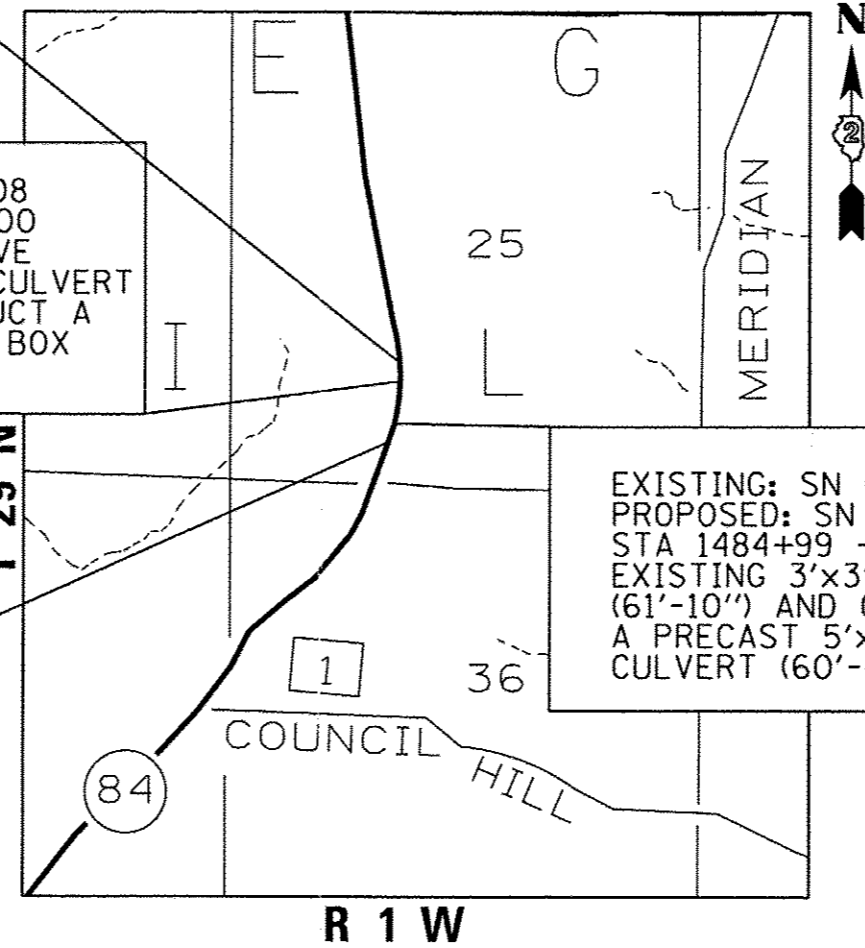


FULL SIZE PLANS HAVE BEEN PREPARED USING STANDARD
ENGINEERING SCALES. REDUCED SIZED PLANS WILL NOT
CONFORM TO STANDARD SCALES. IN MAKING MEASUREMENTS
ON REDUCED PLANS, THE ABOVE SCALES MAY BE USED.

J.U.L.I.E.
JOINT UTILITY LOCATION INFORMATION FOR EXCAVATION
1-800-892-0123
OR 811

PROJECT ENGINEER: VAL LYKHOLAP PHONE# (815) 284-5933
PROJECT MANAGER: MASOOD AHMAD

CONTRACT NO. 64F75



GROSS LENGTH = 1600 FT. = 0.303 MILE
NET LENGTH = 1600 FT. = 0.303 MILE

STATE OF ILLINOIS
DEPARTMENT OF TRANSPORTATION
DIVISION OF HIGHWAYS

SUBMITTED JANUARY 22 20 13
Paul A. Korte
DEPUTY DIRECTOR OF HIGHWAYS, REGION ENGINEER

MARCH 22 20 13
John D. Baranzelli, P.E.
ENGINEER OF DESIGN AND ENVIRONMENT

MARCH 22 20 13
Omer Osham, P.E.
DIRECTOR OF HIGHWAYS, CHIEF ENGINEER

**PRINTED BY THE AUTHORITY
OF THE STATE OF ILLINOIS**