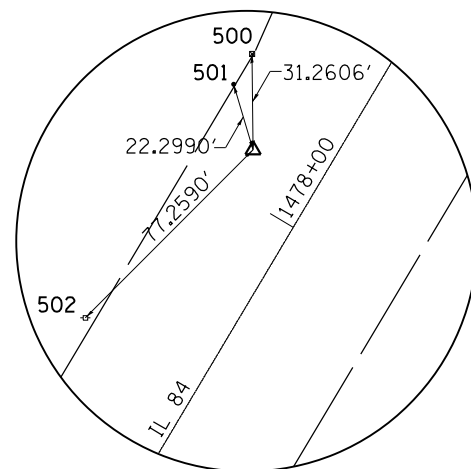


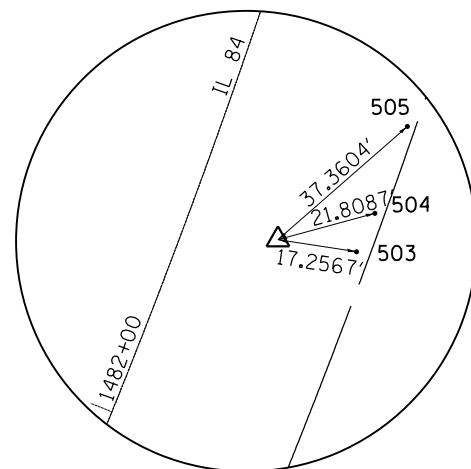
HORIZONTAL & VERTICAL CONTROL

| HORIZONTAL CONTROL POINTS | | | | | | | |
|---------------------------|--------------|--------------|-----------|-------|--------------|-------------|------------------------|
| POINT | NORTH | EAST | ELEVATION | CHAIN | STATION | OFFSET | DESCRIPTION |
| 1 | 2115796.2173 | 2222630.1389 | 896.0824 | IL84 | 1478+14.9447 | 24.1656' LT | TOPO SURVEY POINT, PIN |
| 2 | 2116161.0192 | 2222866.9762 | 885.5198 | IL84 | 1482+47.5670 | 20.1246' RT | TOPO SURVEY POINT, PIN |
| 3 | 2116563.9998 | 2222960.9037 | 881.8767 | IL84 | 1486+57.4238 | 19.8851' RT | TOPO SURVEY POINT, PIN |
| 4 | 2117204.6242 | 2222903.9484 | 885.4186 | IL84 | 1492+99.1466 | 20.8068' LT | TOPO SURVEY POINT, PIN |
| 5 | 2117699.9760 | 2222830.3802 | 890.4820 | IL84 | 1498+02.1135 | 22.8201' LT | TOPO SURVEY POINT, PIN |

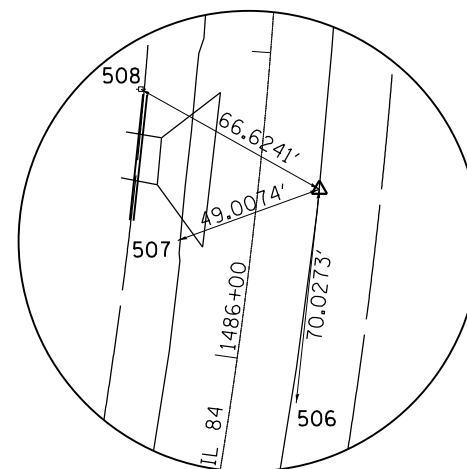
| REFERENCE TIES | | | | | | | |
|----------------|--------------|--------------|-------|--------------|-------------|---------------------------------|--|
| POINT | NORTH | EAST | CHAIN | STATION | OFFSET | DESCRIPTION | |
| 500 | 2115827.4763 | 2222629.8220 | IL84 | 1478+41.6358 | 40.4386' LT | R.O.W. MARKER, BACK | |
| 501 | 2115817.6058 | 2222623.8321 | IL84 | 1478+30.0904 | 40.5318' LT | FENCE POST, SHINER | |
| 502 | 2115741.5165 | 2222575.5791 | IL84 | 1477+40.0256 | 43.0359' LT | POWER POLE, SHINER | |
| 503 | 2116158.3951 | 2222884.0322 | IL84 | 1482+50.9539 | 37.0337' RT | FENCE POST, SHINER | |
| 504 | 2116166.7489 | 2222888.0188 | IL84 | 1482+59.9619 | 37.9149' RT | GATE POST, SHINER | |
| 505 | 2116185.6229 | 2222895.0913 | IL84 | 1482+79.6564 | 38.2652' RT | GATE POST, SHINER | |
| 506 | 2116494.3776 | 2222953.3819 | IL84 | 1485+88.2689 | 21.139' RT | GUARDRAIL STEEL PLATE BEAM, END | |
| 507 | 2116547.3335 | 2222914.8173 | IL84 | 1486+35.7257 | 24.0718' LT | GUARDRAIL STEEL PLATE BEAM, END | |
| 508 | 2116596.6035 | 2222902.8023 | IL84 | 1486+84.4748 | 41.0799' LT | POWER POLE, SHINER | |
| 509 | 2117278.3505 | 2222896.4481 | IL84 | 1493+73.5357 | 20.599' LT | GUARDRAIL STEEL PLATE BEAM, END | |
| 510 | 2117208.9794 | 2222946.5940 | IL84 | 1492+99.3343 | 22.0602' RT | GUARDRAIL STEEL PLATE BEAM, END | |
| 511 | 2117104.9333 | 2222893.6845 | IL84 | 1492+00.1990 | 39.8245' LT | R.O.W. MARKER, BACK | |
| 512 | 2117880.2477 | 2222771.7427 | IL84 | 1499+91.1443 | 43.7021' LT | POWER POLE, SHINER | |
| 513 | 2117761.5596 | 2222828.9571 | IL84 | 1498+63.0013 | 12.2805' LT | PAVEMENT STATION NUMBER | |
| 514 | 2117616.2402 | 2222827.2320 | IL84 | 1497+19.8475 | 41.0677' LT | POWER POLE, SHINER | |



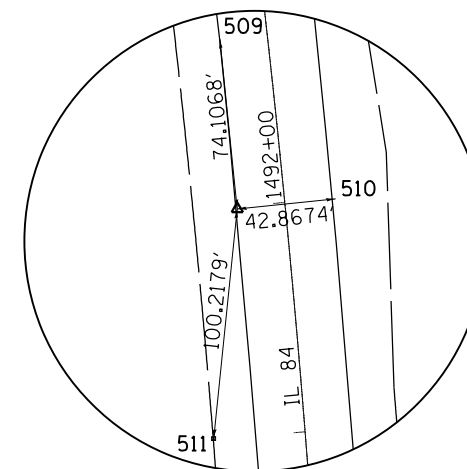
HORIZONTAL CONTROL POINT No. 1



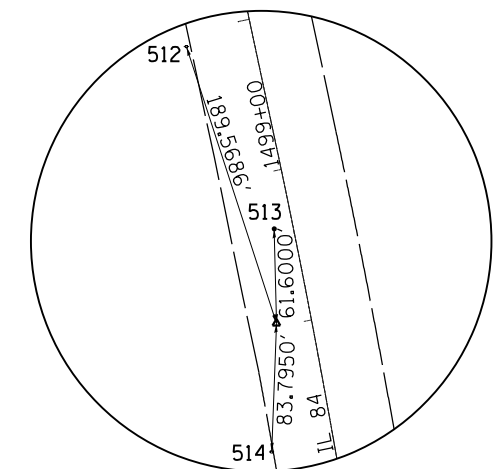
HORIZONTAL CONTROL POINT No. 2



HORIZONTAL CONTROL POINT No. 3



HORIZONTAL CONTROL POINT No. 4



HORIZONTAL CONTROL POINT No. 5