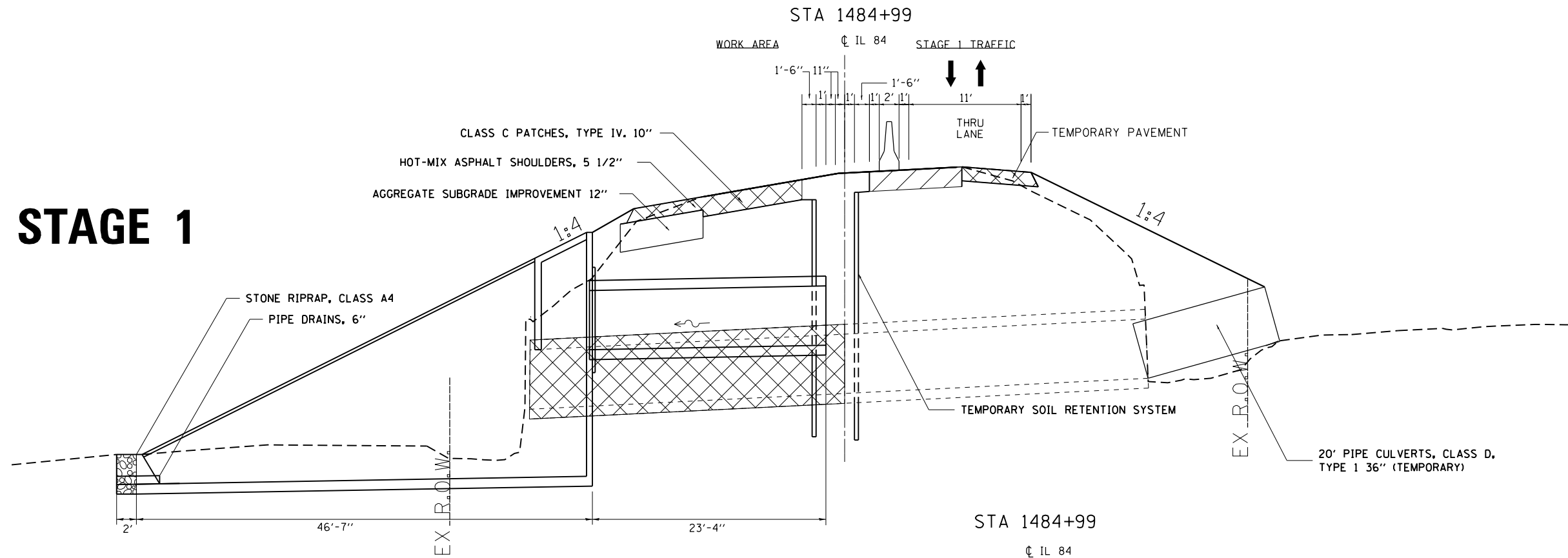


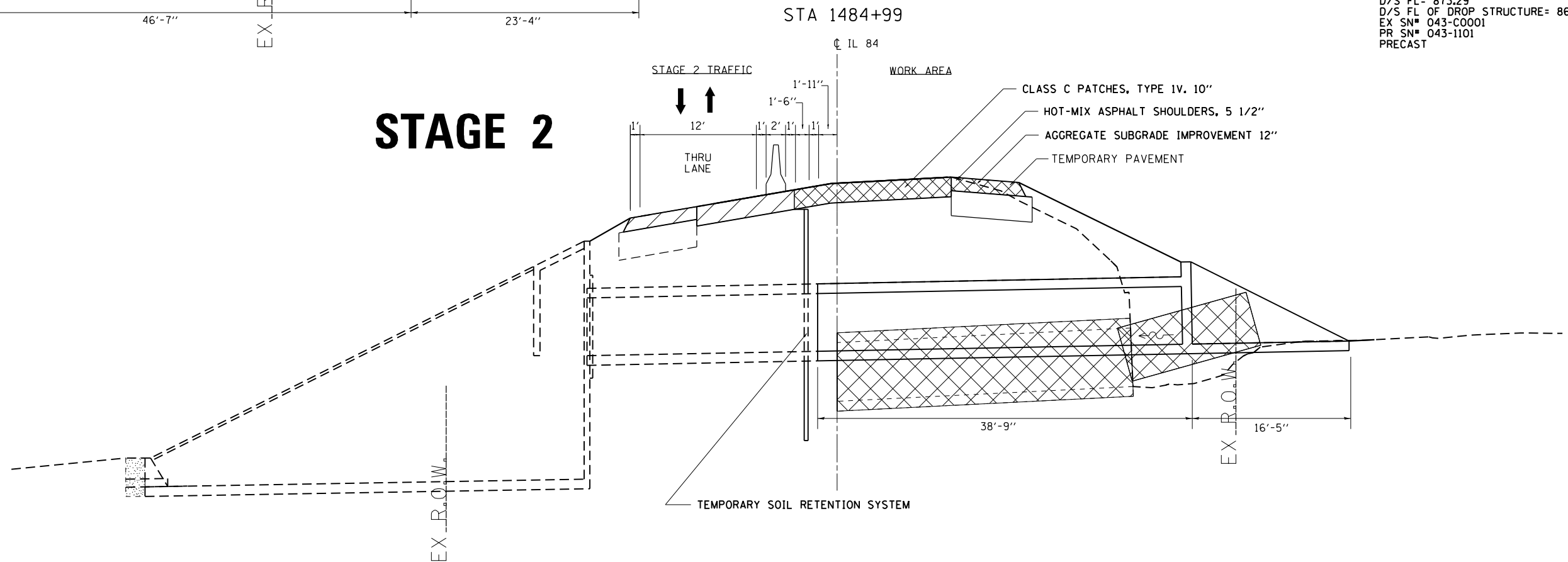
TYPICAL SECTIONS

STAGE 1



STA 1484+99
 REMOVE EXISTING 3'X3' BOX CULVERT
 PROPOSED 5'X3' RC BOX CULVERT
 2 EACH GRATED END SECTIONS
 U/S FL= 873.90'
 D/S FL= 873.29'
 D/S FL OF DROP STRUCTURE= 866.39'
 EX SN# 043-C0001
 PR SN# 043-1101
 PRECAST

STAGE 2



FILE NAME =	USER NAME = dosddd	DESIGNED -	REVISED -
et:\pw\work\p1dot\dosddd\0233029\02014	0-sh-typical.dgn	DRAWN -	REVISED -
	PLOT SCALE = 100.0000' / in.	CHECKED -	REVISED -
	PLOT DATE = Tue Jan 22 11:24:15 2013	DATE -	REVISED -

STATE OF ILLINOIS
 DEPARTMENT OF TRANSPORTATION

IL 84	
STAGING DETAILS	
SCALE:	SHEET OF SHEETS STA. TO STA.

F.A.P. RTE.	SECTION	COUNTY	TOTAL SHEETS	SHEET NO.
570	101T	JO DAVIESS	64	25
			CONTRACT NO. 64F75	
ILLINOIS FED. AID PROJECT				