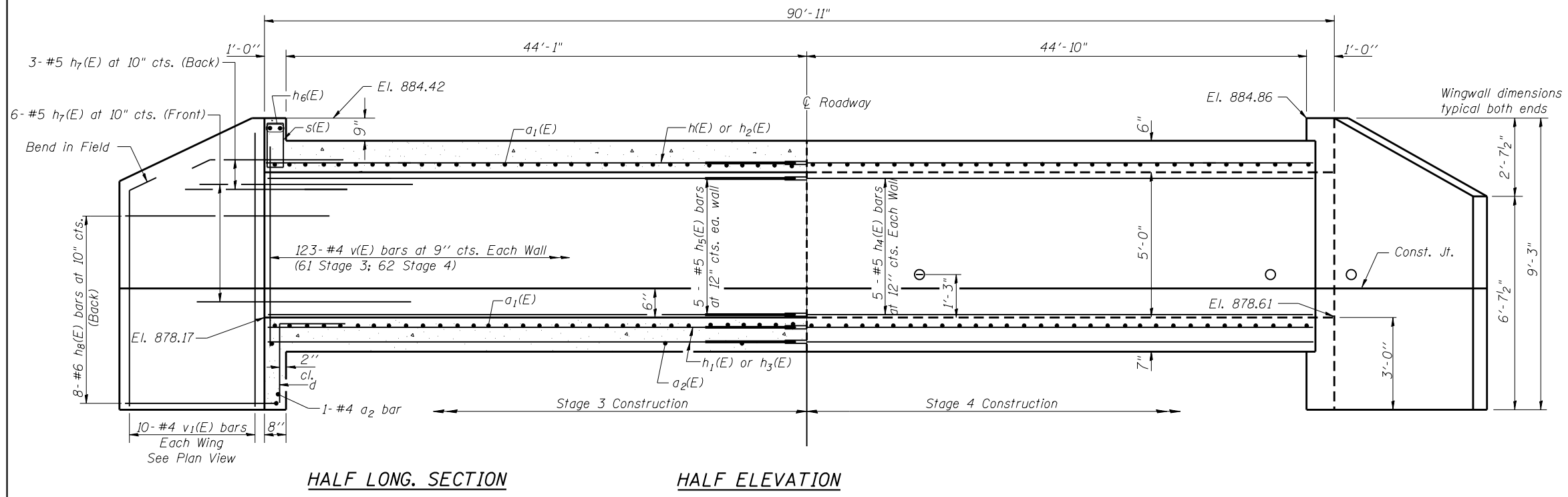
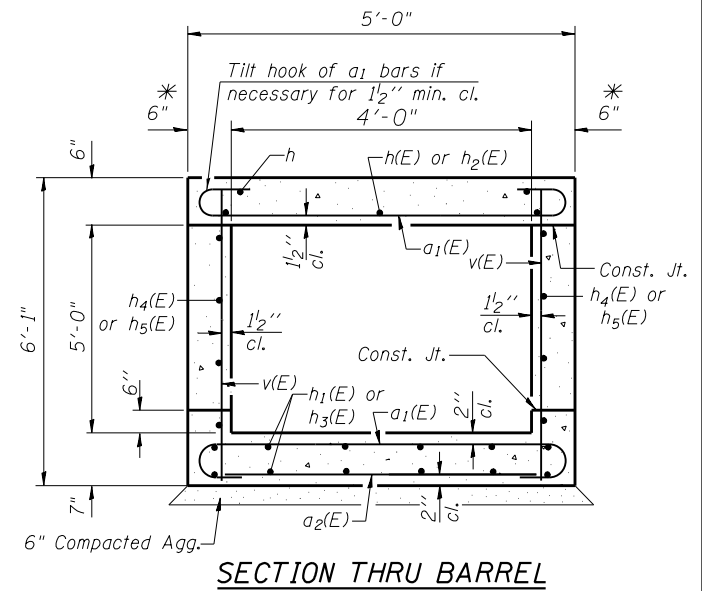


BOX CULVERT DETAILS
IL RTE 84
F.A.P. RTE 570 SECTION 101T
JO DAVIESS COUNTY
STA. 1494 + 03
STR. NO. 043-1100



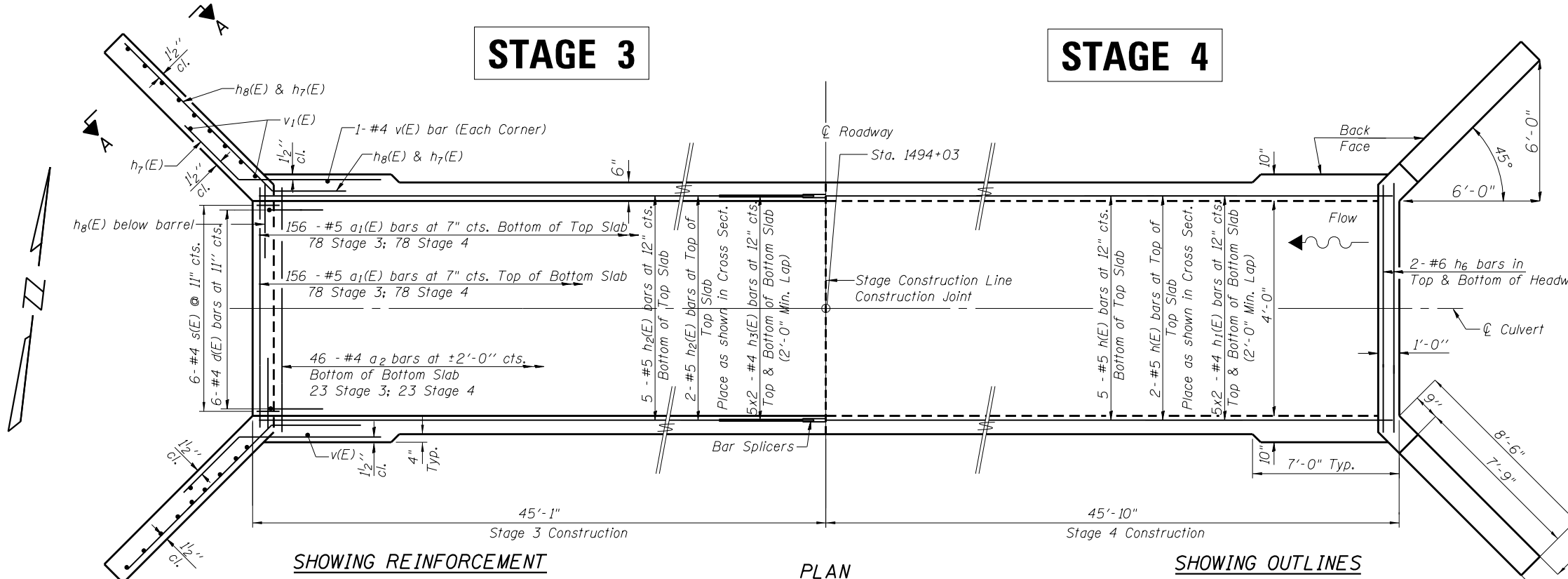
HALF LONG. SECTION

HALF ELEVATION



SECTION THRU BARREL

* WALL ↑ INCREASES TO 10" AT ENDS



SHOWING REINFORCEMENT

PLAN

SHOWING OUTLINES

NOTES

A distance of half the length of the wingwall but not less than seven feet of the barrel shall be poured monolithically with the wingwalls.
 Reinforcement bars shall conform to the requirements of ASTM A 706 Gr 60. See Special Provisions.
 Bars indicated thus 12 x 4-#5 etc. indicates 12 lines of bars with 4 lengths per line.
 Bars designated (E) shall be epoxy coated.

BAR LAP

#4 2'-0"
 #5 2'-6"

TOTAL BILL OF MATERIAL - STA. 1494+03

Bar	No.	Size	Length	Shape
a ₁ (E)	312	#5	5'-11"	U
a ₂ (E)	48	#4	4'-9"	—
d(E)	12	#4	4'-6"	L
h(E)	7	#5	45'-8"	—
h ₁ (E)	20	#4	23'-10"	—
h ₂ (E)	7	#5	44'-10"	—
h ₃ (E)	20	#4	23'-6"	—
h ₄ (E)	10	#5	45'-8"	—
h ₅ (E)	10	#5	44'-10"	—
h ₆ (E)	8	#6	4'-4"	—
h ₇ (E)	36	#5	8'-0"	—
h ₈ (E)	32	#6	11'-6"	—
s(E)	12	#4	4'-3"	S
v(E)	250	#4	5'-9"	—
v ₁ (E)	40	#4	9'-0"	—
Concrete Box Culverts	Cu. Yd.		46.1	
Reinforcement Bars	Pound		6,490	
Epoxy Coated				
Bar Splicers	Each		27	

SSB-H-0

7-1-10



USER NAME = dossdd
 WES JOB # = 2120015
 PLOT SCALE = 10.0000 / in.
 PLOT DATE = Tue Jan 22 10:59:48 2013

DESIGNED - SB
 DRAWN - BEH
 CHECKED - DB
 DATE - 08/08/2012

REVISED - -
 REVISED - -
 REVISED - -
 REVISED - -

STATE OF ILLINOIS
 DEPARTMENT OF TRANSPORTATION

BOX CULVERT DETAILS STA. 1494 + 03
 STRUCTURE NO. 043-1100

SHEET 2 OF 3 SHEETS STA. 1494+03

F.A.P. RTE.	SECTION	COUNTY	TOTAL SHEETS	SHEET NO.
570	101T	JO DAVIESS	64	39
CONTRACT NO. 64F75			ILLINOIS FED. AID PROJECT	