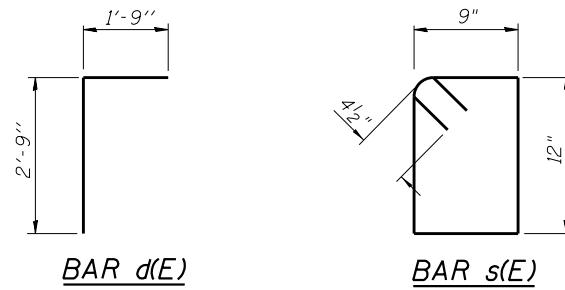
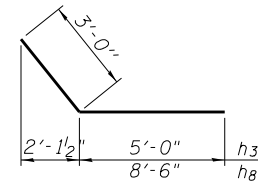


BOX CULVERT DETAILS
IL RTE 84
F.A.P. RTE 570 SECTION 101T
JO DAVIESS COUNTY
STA. 1494 + 03
STR. NO. 043-1100

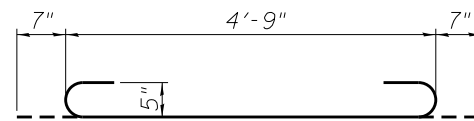


BAR d(E)

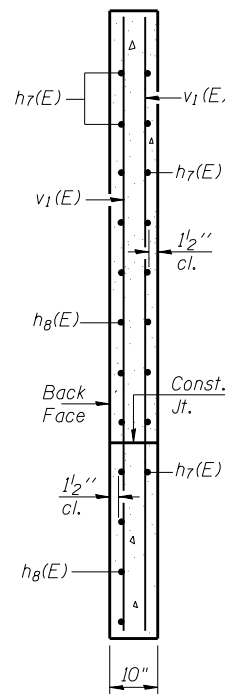
BAR s(E)



BARS h7(E) & h8(E)



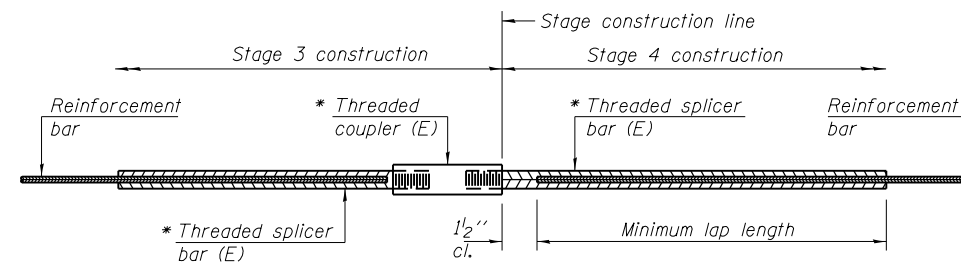
BAR a1(E)



SECTION A-A

MIN. BAR LAP

- #4 2'-0"
- #5 2'-6"



STANDARD BAR SPLICER ASSEMBLY

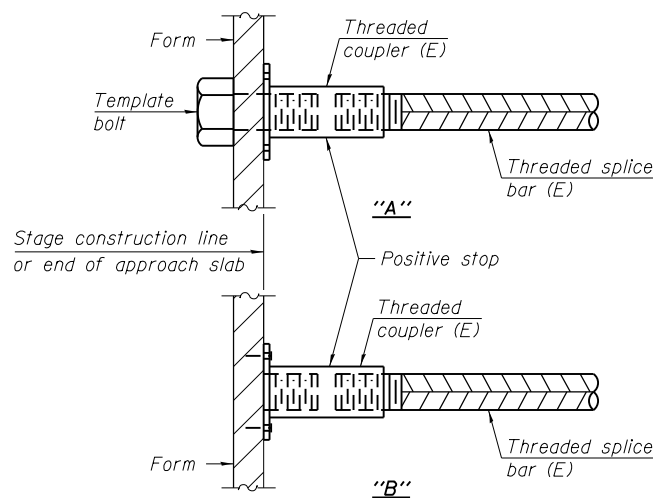
Minimum Lap Lengths - For Splicers						
Bar size to be spliced	Table 1	Table 2	Table 3	Table 4	Table 5	Table 6
3, 4	1'-5"	1'-11"	2'-1"	2'-4"	2'-7"	2'-11"
5	1'-9"	2'-5"	2'-7"	2'-11"	3'-3"	3'-8"
6	2'-1"	2'-11"	3'-1"	3'-6"	3'-10"	4'-5"
7	2'-9"	3'-10"	4'-2"	4'-8"	5'-2"	5'-10"
8	3'-8"	5'-1"	5'-5"	6'-2"	6'-9"	7'-8"
9	4'-7"	6'-5"	6'-10"	7'-9"	8'-7"	9'-8"

- Table 1: Black bar, 0.8 Class C
- Table 2: Black bar, Top bar lap, 0.8 Class C
- Table 3: Epoxy bar, 0.8 Class C
- Table 4: Epoxy bar, Top bar lap, 0.8 Class C
- Table 5: Epoxy bar, Class C
- Table 6: Epoxy bar, Top bar top, Class C

Threaded splicer bar length = min. lap length + 1 1/2" + thread length

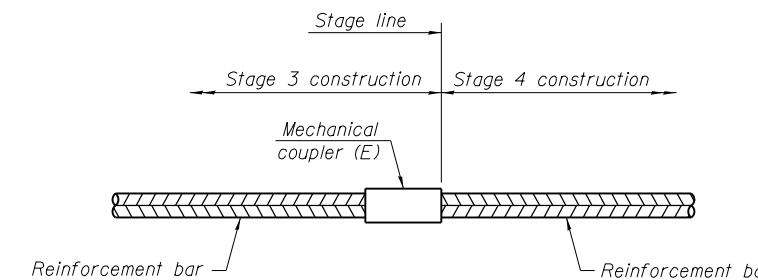
* Epoxy not required on Bar Splicer Assembly components used in conjunction with black bars.

Location	Bar size	No. assemblies required	Table for minimum lap length
Top Slab	#5	7	5
Bottom Slab	#4	10	5
Walls	#5	10	5



INSTALLATION AND SETTING METHODS

- "A" : Set bar splicer assembly by means of a template bolt.
- "B" : Set bar splicer assembly by nailing to wood forms or cementing to steel forms.
- (E) : Indicates epoxy coating.



STANDARD MECHANICAL SPLICER

(Alternate)

GENERAL NOTES

- All work and materials shall be in accordance with the Illinois Department of Transportation (IDOT) Standard Specifications for Road and Bridge Construction adopted January 1, 2012 and latest supplemental specifications and recurring special provisions, unless noted otherwise on these plans or special provisions.
- The Contractor shall verify all dimensions in the field prior to commencing work. The engineer shall be notified of any discrepancies which may exist, prior to proceeding with the work.
- Any information concerning type or location of underground and other utilities is not guaranteed to be accurate or all inclusive. The Contractor is responsible for making his own determinations as to the type and location of the utilities as may be necessary to avoid damage thereto. Contractor shall call J.U.L.I.E. prior to excavation.
- The Contractor is responsible for design, installation and removal of all excavation support systems.
- The excavation and work area shall be properly drained at all times during construction. All wet, loose, frozen or other unsuitable material shall be removed prior to placement of concrete or compacted backfill. The cost of any pumping required shall be included in the cost of "Concrete Box Culverts".
- It shall be the responsibility of the Contractor to divert the stream flow during construction in order to keep the construction areas free of water. The method of water diversion shall be subject to the approval of the Engineer and cost shall be included with "Concrete Box Culverts".
- 6" Compacted Aggregate base below box culvert shall not be paid for separately but considered included in the contract price for concrete box culverts.

CAST-IN-PLACE CONCRETE NOTES

- All cast-in-place concrete work shall be in accordance with Section 540 of the Illinois Department of Transportation (IDOT) Standard Specifications for Road and Bridge Construction adopted January 1, 2012, supplemental specifications and recurring special provisions and as noted below.
- Reinforcement bars shall conform to the requirements of ASTM A 706 GR60.
- Exposed edges of cast-in-place concrete shall be beveled 3/4".
- All construction joints shall be bonded.
- Concrete mix designs shall be submitted to the Engineer for review and approval a minimum of 7 days prior to ordering or placing concrete.
- Backfill material on all sides of the box and wings shall be compacted in accordance with Section 502 using walk behind tampers.

BAR SPLICER NOTES

Splicer bars shall be deformed with threaded ends and have a minimum 60 ksi yield strength.

All reinforcement shall be lapped and tied to the splicer bars.

Bar splicer assemblies shall be epoxy coated according to the requirements for reinforcement bars. See Section 508 of the Standard Specifications.

See approved list of bar splicer assemblies and mechanical splicers for alternatives.



USER NAME = dossdd	DESIGNED - SB	REVISED - -
WES JOB # = 2120015	DRAWN - BEH	REVISED - -
PLOT SCALE = 10.0000 / in.	CHECKED - DB	REVISED - -
PLOT DATE = Tue Jan 22 11:00:03 2013	DATE - 08/08/2012	REVISED - -

STATE OF ILLINOIS
DEPARTMENT OF TRANSPORTATION

BOX CULVERT DETAILS STA. 1494 + 03
STRUCTURE NO. 043-1100

SHEET 3 OF 3 SHEETS STA. 1494+03

F.A.P. RTE.	SECTION	COUNTY	TOTAL SHEETS	SHEET NO.
570	101T	JO DAVIESS	64	40
CONTRACT NO. 64F75			ILLINOIS FED. AID PROJECT	