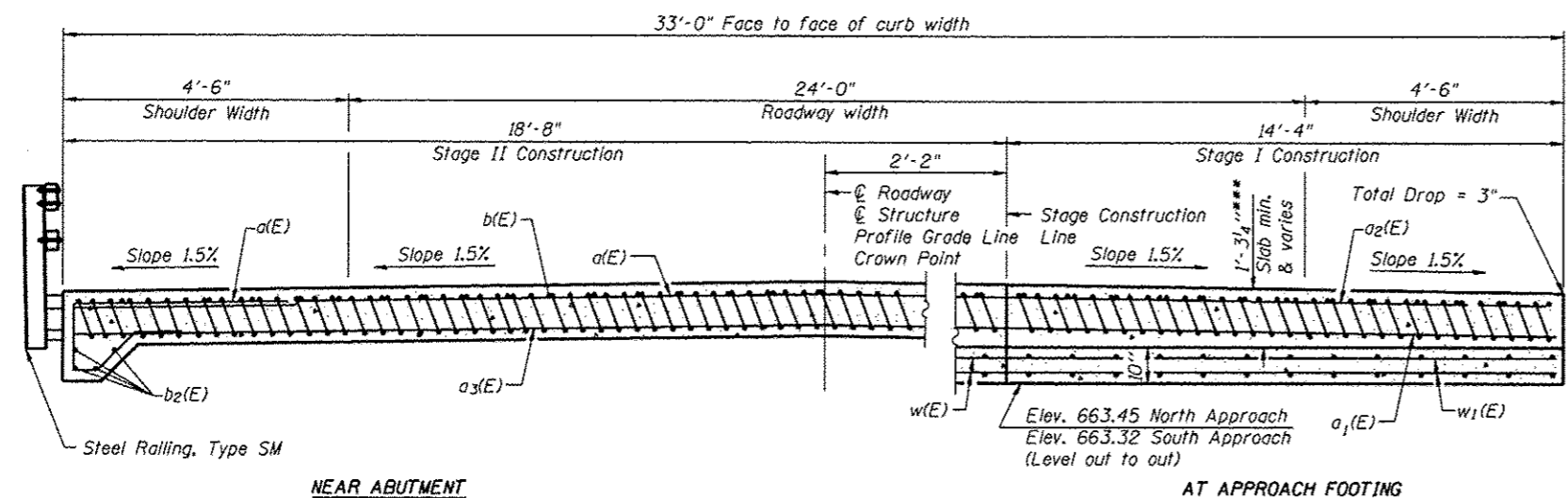


Notes:
 See sheet 7 of 16 for Detail A.
 Approach slab concrete shall be paid for as Concrete Superstructure.
 Approach footing concrete shall be paid for as Concrete Structures.
 Reinforcement shall be paid for as Reinforcement Bars, Epoxy Coated.
 For v(E) bar details, see sheet 12 of 16.
 The approach footing maximum applied service bearing pressure (Qmax) = 2.0 ksf.
 For bar splicer details, see sheet 14 of 16.
 Cost of excavation for approach footing included with Concrete Structures.
 For additional railing details, see sheet 9 of 16.

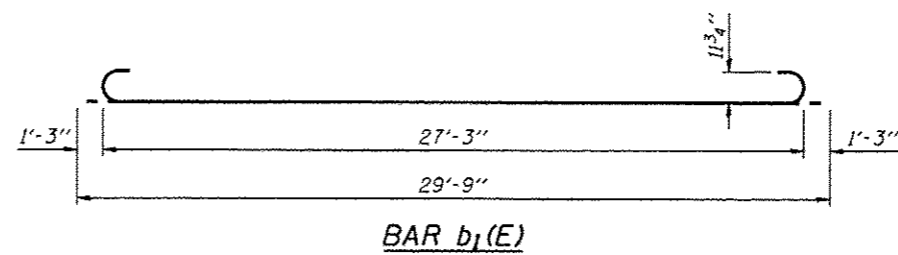
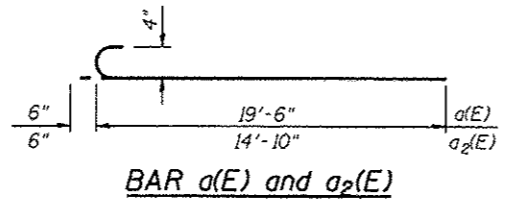
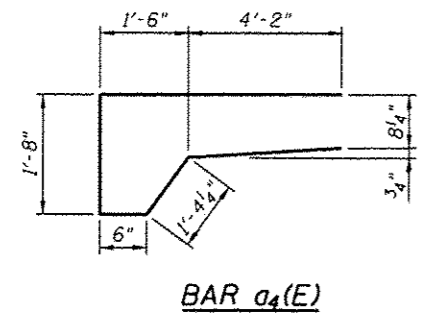


*Tilt #9 b (E) bars as required to maintain clearance.
 **Cost included with Concrete Superstructures.
 ***Prior to grinding.

**TWO APPROACHES
 BILL OF MATERIAL**

| Bar | No. | Size | Length | Shape |
|----------------------------------|-----|------|---------|--------|
| a(E) | 50 | #4 | 20'-0" | — |
| a1(E) | 92 | #5 | 14'-10" | — |
| a2(E) | 50 | #4 | 15'-4" | — |
| a3(E) | 92 | #5 | 19'-6" | — |
| a4(E) | 136 | #6 | 13'-5" | — |
| b(E) | 54 | #4 | 29'-8" | — |
| b1(E) | 156 | #9 | 29'-9" | — |
| b2(E) | 16 | #8 | 20'-8" | — |
| w(E) | 80 | #5 | 16'-9" | — |
| w1(E) | 80 | #5 | 14'-10" | — |
| Concrete Superstructure | | | Cu. Yd. | 103 |
| Concrete Structures | | | Cu. Yd. | 22 |
| Reinforcement Bars, Epoxy Coated | | | Pound | 24,950 |
| Reinforcement Bars, Epoxy Coated | | | Pound | 3,570 |

****Included in Superstructure Quantity
 *****Included in Substructure Quantity



REVISI 4-17-13



1170 SOUTH HOBOLT ROAD
 JOLIET, ILLINOIS 60431
 (815) 744-4200
 USER NAME: ryan
 PLOT SCALE: #
 PLOT DATE: 8/3/2011

DESIGNED: RRD
 CHECKED: AJS
 DRAWN: BJF
 CHECKED: AJS

REVISED: -
 REVISED: -
 REVISED: -
 REVISED: -

STATE OF ILLINOIS
 DEPARTMENT OF TRANSPORTATION

BRIDGE APPROACH PAVEMENT (2 OF 2)
 STRUCTURE NO. 092-0171

SHEET NO. 8 OF 16 SHEETS

| F.A.P. RTE. | SECTION | COUNTY | TOTAL SHEETS | SHEET NO. |
|-------------|---------|-----------|--------------|-----------|
| 840 | 120BR-1 | VERMILION | 44 | 20 |

CONTRACT NO. 70615
 ILLINOIS FED. AID PROJECT

FILE NAME: S:\101_45280-6399_03161024\MicroStation\Items\Structural\B220171-78415-087-840.dgn