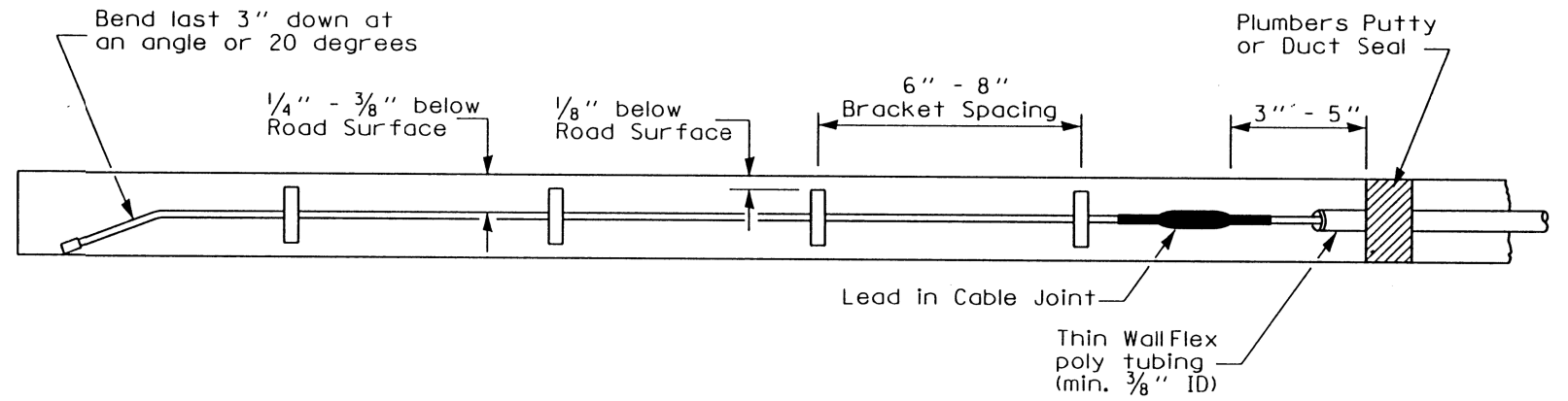


Piezo Detail



NOTES:

- 1) THE LOCATION OF THE PROPOSED ATR 5290 SITE IS STATION 805+25.
- 2) THE PIEZO ELECTRIC AXLE SENSOR LEAD-IN TO THE PAVEMENT IS INCLUDED IN THE PAY ITEM FOR DETECTOR LOOP, TYPE I
- 3) SYSTEM INSTALLED PREVIOUSLY WITH THE EXCEPTION OF THE LISTED ITEMS FOR THE NORTHBOUND LANES.

BILL OF MATERIALS			
CODE NO.	ITEM	UNIT	QUANTITY
88600100	DETECTOR LOOP, TYPE I	FOOT	156
X0323015	PIEZO ELECTRIC AXLE SENSOR, CLASS II	FOOT	22

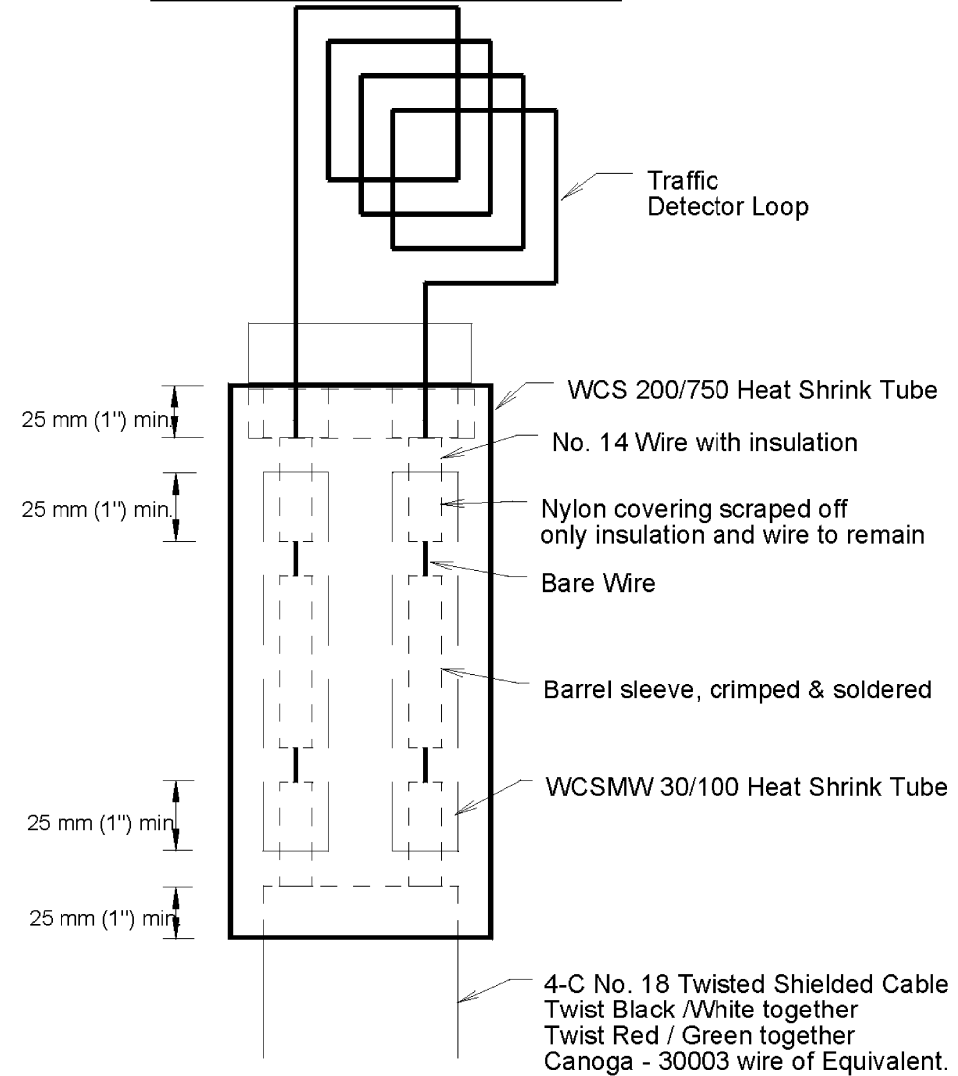
POSSIBLE SOURCES FOR SPECIFIED ITEMS

Material	Possible Source	Contact Person	Telephone Number	Location
Loop Detector Wire encased in Orange Detecta-Duct Tubing	Kris-Tech Wire Company (manufacturer)	Sales Person	(315) 339-5288	Rome, N.Y.
Conoga 2-pair shielded wire suitable for direct burial	3M Traffic Products Division (manufacturer)	Sales Person	(612) 733-1110	Minneapolis, MI
RL-200 Polyurethane resin	IRD - PAT Traffic Inc. (distributor)	Scott Sherwood	(815) 675-1430	Spring Grove, IL
Class-II Bare Linguine (BL) Sensors	Measurement Specialties, Inc (mfg.) IRD - PAT Traffic Inc. (distributor)	Don Halverson Scott Sherwood	(610) 650-1580 (815) 675-1430	Valley Forge, PA Spring Grove, IL

NOTE: IF MANUFACTURERS ARE LISTED RATHER THAN DISTRIBUTORS, IT MAY BE NECESSARY TO CONTACT THE MANUFACTURER FOR THE NEAREST DISTRIBUTOR OR VENDOR.

NOT TO SCALE

Loop Splicing Requirements



Minimum 25 mm (1") Heat Shrink Tube overlap on wire.
PVC & Shielded cable to form water tight seal.

Note: Not to Scale

REVISIONS		Illinois Department of Transportation Office of Planning and Programming			
Name	Date	Drawn By:	Checked By:	Date:	Scale:
		R. Taylor	R. Taylor	01/20/00	NONE

FILE NAME =	USER NAME = dawsonkb	DESIGNED -	REVISED -	STATE OF ILLINOIS DEPARTMENT OF TRANSPORTATION	DETAIL FOR ATR SITE NO. 5290	F.A.I. RTE.	SECTION	COUNTY	TOTAL SHEETS	SHEET NO.
et:\pw\work\p\dot\dawsonkb\0158448\0570716-sht-detail.dgn		DRAWN -	REVISED -			57	(10-34, 10-35)RS-2(NB)	CHAMPAIGN	53	39
PLOT SCALE = 40.0000' / in.		CHECKED -	REVISED -			CONTRACT NO. 70716				
PLOT DATE = 11/15/2012		DATE -	REVISED -			ILLINOIS FED. AID PROJECT				