

F.A. RTE.	SECTION	COUNTY	TOTAL SHEETS	SHEET NO.
VAR. D5	LIGHTING REPAIR 2013-2	ILLINOIS	3	1
			CONTRACT NO. 70A18	

**STATE OF ILLINOIS**  
**DEPARTMENT OF TRANSPORTATION**  
**DIVISION OF HIGHWAYS**

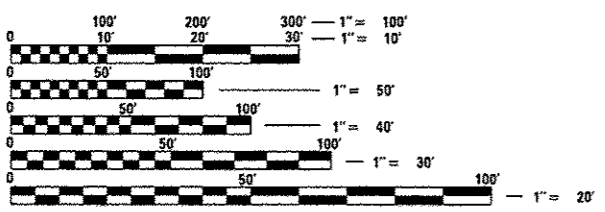
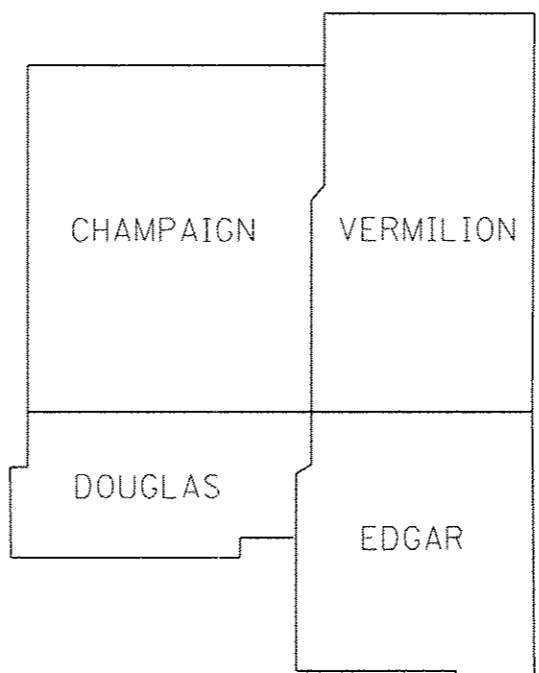
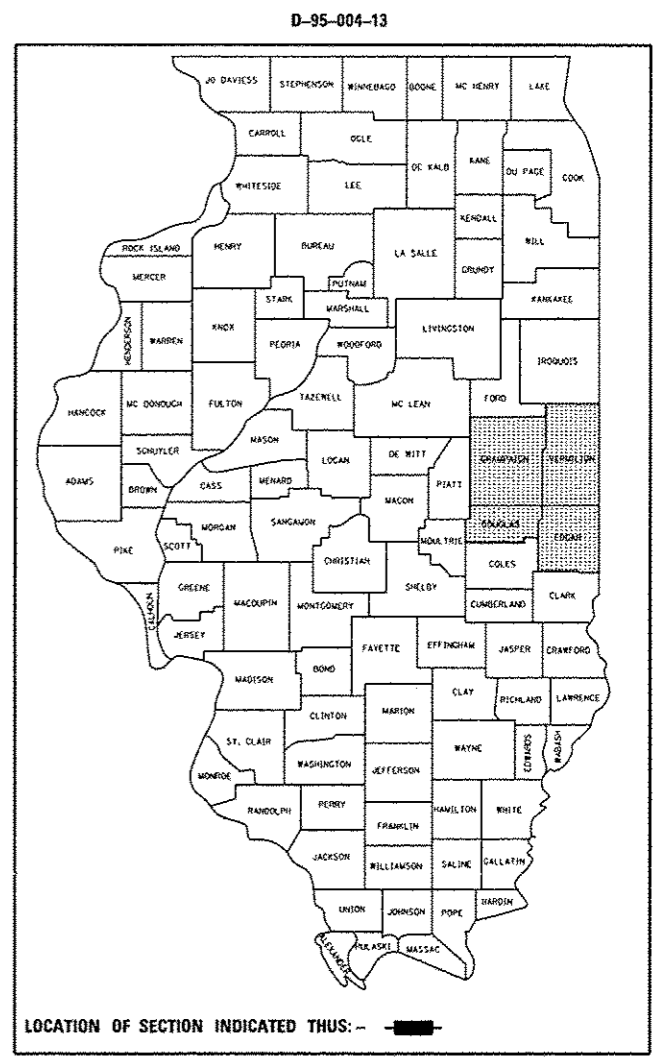
**PROPOSED**  
**HIGHWAY PLANS**

**VARIOUS ROUTES**  
**SECTION D5 LIGHTING REPAIR 2013-2**

**EAST AREA ON CALL LIGHTING REPAIR**  
**VARIOUS COUNTIES**

C-95-004-13

FOR INDEX OF SHEETS, SEE SHEET NO. 2  
FOR SUMMARY OF QUANTITIES, SEE SHEET NO. 3



FULL SIZE PLANS HAVE BEEN PREPARED USING STANDARD ENGINEERING SCALES. REDUCED SIZED PLANS WILL NOT CONFORM TO STANDARD SCALES. IN MAKING MEASUREMENTS ON REDUCED PLANS, THE ABOVE SCALES MAY BE USED.

J.U.L.I.E.  
JOINT UTILITY LOCATION INFORMATION FOR EXCAVATION  
1-800-892-0123  
OR 811

PROJECT ENGINEER: JASON STULTS  
PHONE NUMBER: (217) 465-4181

CONTRACT NO. 70A18

STATE OF ILLINOIS  
DEPARTMENT OF TRANSPORTATION  
DIVISION OF HIGHWAYS

SUBMITTED JAN. 29 20 13  
Joseph S. Crowe  
DEPUTY DIRECTOR OF HIGHWAYS, REGION ENGINEER  
CAE

March 22 20 13  
John D. Baranzelli, P.E.  
ENGINEER OF DESIGN AND ENVIRONMENT

March 22 20 13  
Omer Osman, P.E.  
DIRECTOR OF HIGHWAYS, CHIEF ENGINEER

**PRINTED BY THE AUTHORITY**  
**OF THE STATE OF ILLINOIS**