

STATE OF ILLINOIS  
 DEPARTMENT OF TRANSPORTATION  
 DIVISION OF HIGHWAYS

**PROPOSED  
 HIGHWAY PLANS**

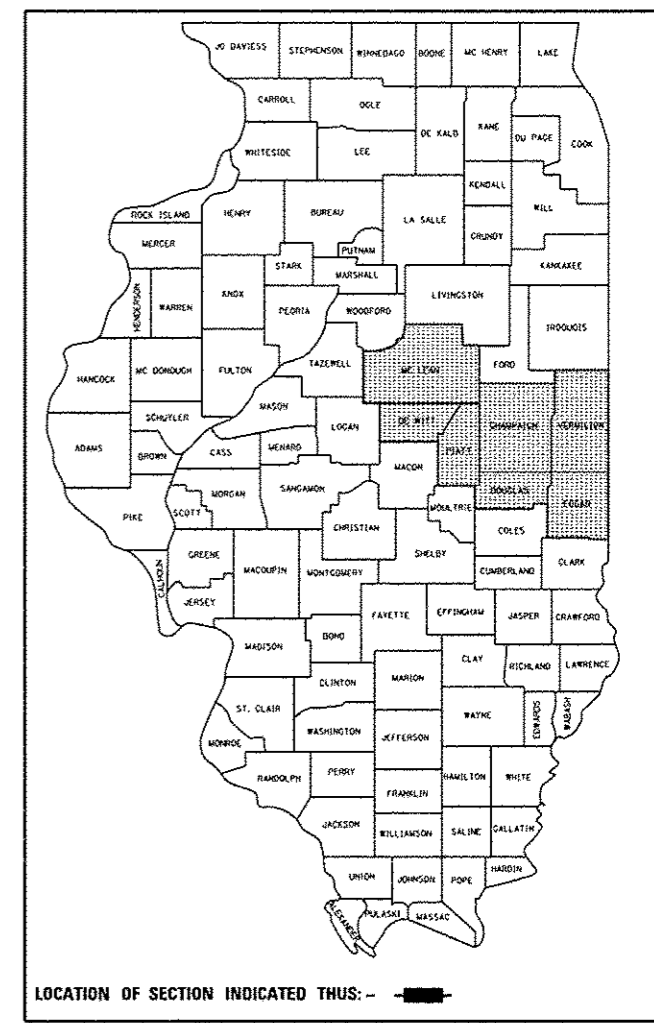
VARIOUS ROUTES  
 SECTION D5 GUARDRAIL & FENCE REPAIR-2013

GUARDRAIL & FENCE REPAIRS  
 VARIOUS COUNTIES

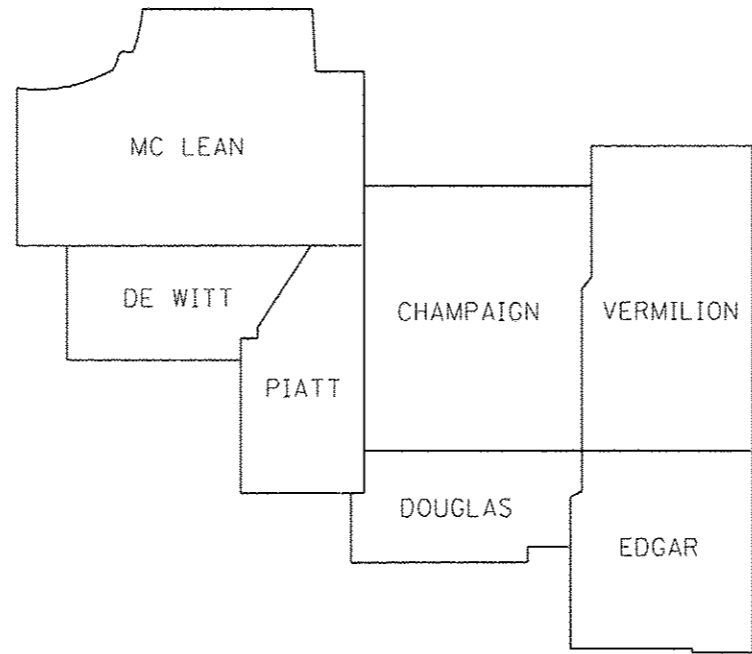
C-95-005-13

F.A. RTE.	SECTION	COUNTY	TOTAL SHEETS	SHEET NO.
VAR		ILLINOIS	19	1
CONTRACT NO. 70A19				

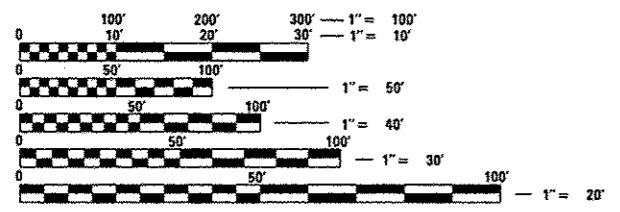
D-95-005-13



LOCATION OF SECTION INDICATED THUS: - [shaded box] -



FOR INDEX OF SHEETS, SEE SHEET NO. 2  
 FOR SUMMARY OF QUANTITIES, SEE SHEET NO. 3-7



FULL SIZE PLANS HAVE BEEN PREPARED USING STANDARD ENGINEERING SCALES. REDUCED SIZED PLANS WILL NOT CONFORM TO STANDARD SCALES. IN MAKING MEASUREMENTS ON REDUCED PLANS, THE ABOVE SCALES MAY BE USED.

J.U.L.I.E.  
 JOINT UTILITY LOCATION INFORMATION FOR EXCAVATION  
 1-800-892-0123  
 OR 811

PROJECT ENGINEER JASON STULTS  
 PHONE NUMBER: (217) 465-4181

CONTRACT NO. 70A19

STATE OF ILLINOIS  
 DEPARTMENT OF TRANSPORTATION  
 DIVISION OF HIGHWAYS

SUBMITTED FEB. 8 2013  
Joseph E. Cowie  
 DEPUTY DIRECTOR OF HIGHWAYS, REGION ENGINEER

March 22 2013  
John D. Baranzoli, P.E.  
 ENGINEER OF DESIGN AND ENVIRONMENT

March 22 2013  
Omer Osman, P.E.  
 DIRECTOR OF HIGHWAYS, CHIEF ENGINEER

PRINTED BY THE AUTHORITY  
 OF THE STATE OF ILLINOIS