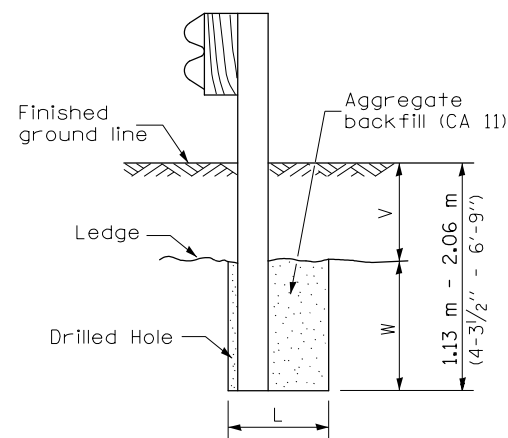


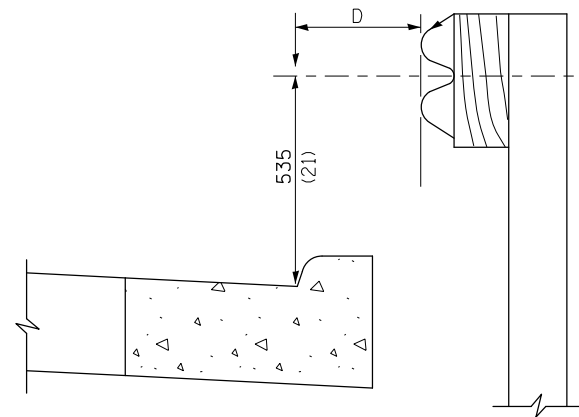
PLAN



Note:  
Ledge line is top of rock ledge or hard slag fill.

ELEVATION

**FOOTING FOR POST WHEN IMPERVIOUS MATERIAL IS ENCOUNTERED**

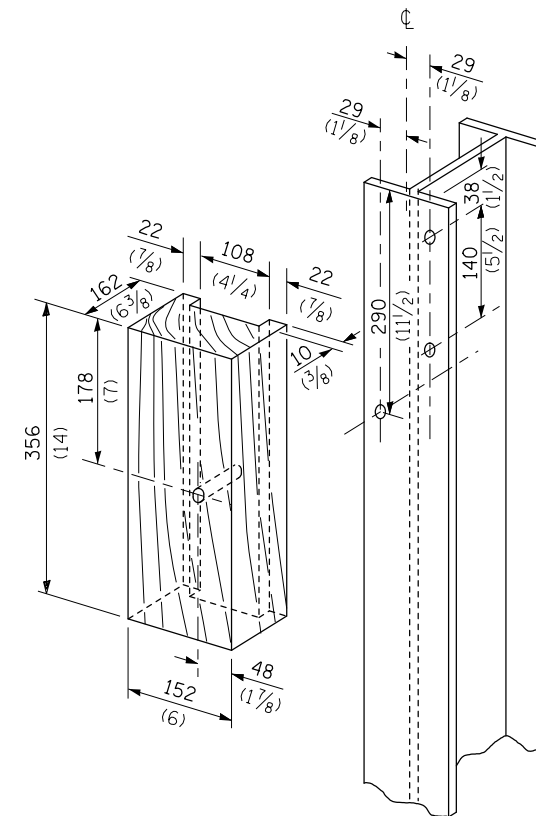


Note:

If it is necessary for D to be more than 300 (12) and less than 3.0 m (10'-0") type M-5 (M-2) curb and gutter (Std. 606001) shall be used in front of and in advance of the guardrail.

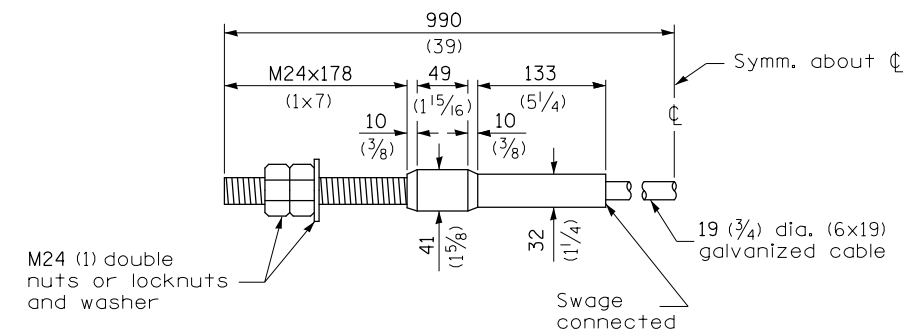
**GUARDRAIL PLACED BEHIND CURB**

(D = 0 desirable to 300 (12) maximum)



**WOOD BLOCK-OUT AND STEEL POST DETAILS**

V	W	L	
		Steel Post	Wood Post
0 - 460 (0 - 18)	610 (24)	530 (21)	580 (23)
>460 - 825 (>18 - 41.5)	305 (12)	203 (8)	250 (10)
>825 - 1.13 m (>41.5 - 53.5)	305 - 0 (12 - 0)	203 (8)	250 (10)



**CABLE ASSEMBLY**

(18,100 kg (40,000 lbs.) min. breaking strength)  
Tighten to taut tension.

**STEEL PLATE BEAM GUARDRAIL**

(Sheet 4 of 4)

**STANDARD 630001-06**

\*D5 GUARDRAIL & FENCE REPAIR-2013

FILE NAME =	USER NAME = ceerlockjd	DESIGNED -	REVISED -
ei:\pw\work\p\id\ceerlockjd\0331926\08	70A19-sht-details.dgn	DRAWN -	REVISED -
	PLOT SCALE = 48.0000' / in.	CHECKED -	REVISED -
*MODELNAME*	PLOT DATE = 2/8/2013	DATE - 02/04/13	REVISED -

**STATE OF ILLINOIS  
DEPARTMENT OF TRANSPORTATION**

**DETAIL OF 27 1/2" STEEL PLATE BEAM GUARDRAIL**

SCALE: SHEET 4 OF 4 SHEETS STA. TO STA.

F.A. RTE.	SECTION	COUNTY	TOTAL SHEETS	SHEET NO.
	•		19	11
CONTRACT NO. 70A19			ILLINOIS FED. AID PROJECT	