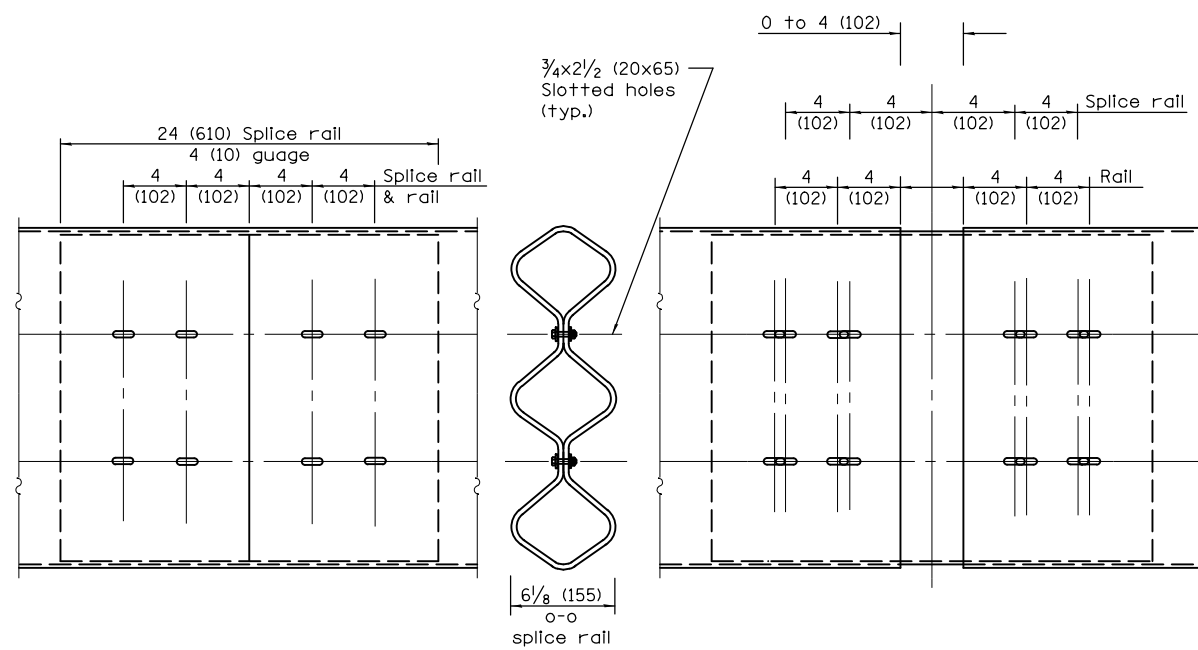
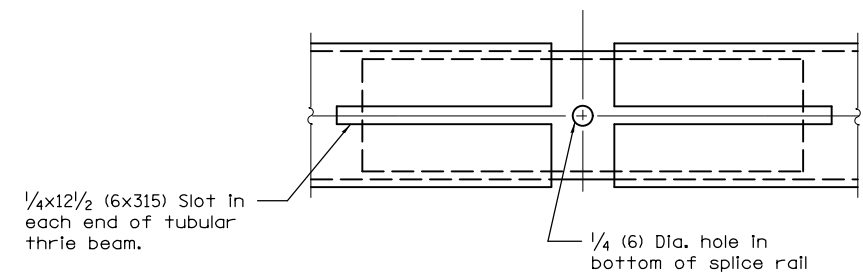


**TUBULAR THRIE BEAM FOR INTERNAL SPLICE JOINT**



**INTERNAL SPLICE JOINT**

**INTERNAL EXPANSION SPLICE JOINT**



**BOTTOM VIEW OF INTERNAL EXPANSION SPLICE JOINT**

**GENERAL NOTES**

Plate Washers B are to be placed under both heads and nuts of splicing bolts for internal splice and internal expansion splice joint.

Plate Washers C are to be placed under both heads and nuts of splicing bolts for lap expansion and internal lap splice joint.

See Standard 630001 for details of guardrail not shown.

All dimensions are in Inches (millimeters) unless otherwise shown.

**TUBULAR THRIE BEAM RETROFIT RAIL FOR BRIDGES**

(Sheet 1 of 3)

**STANDARD 509001-02**

FILE NAME =	USER NAME = ceerlockjd	DESIGNED -	REVISED -
ei:\pwork\pwork\ceerlockjd\0331926\0370A19-sht-details.dgn		DRAWN -	REVISED -
	PLOT SCALE = 40.0000' / in.	CHECKED -	REVISED -
\$MODELNAME\$	PLOT DATE = 2/8/2013	DATE - 02/04/13	REVISED -

**STATE OF ILLINOIS  
DEPARTMENT OF TRANSPORTATION**

**PLAN DETAIL OF TUBULAR THRIE BEAM**

SCALE: SHEET 1 OF 3 SHEETS STA. TO STA.

F.A. RTE.	SECTION	COUNTY	TOTAL SHEETS	SHEET NO.
VAR.	*		19	12
			CONTRACT NO. 70A19	
ILLINOIS FED. AID PROJECT				

\*D5 GUARDRAIL & FENCE REPAIR-2013