

04-26-13 LETTING ITEM 147

STATE OF ILLINOIS  
DEPARTMENT OF TRANSPORTATION  
DIVISION OF HIGHWAYS

**PROPOSED  
HIGHWAY PLANS**

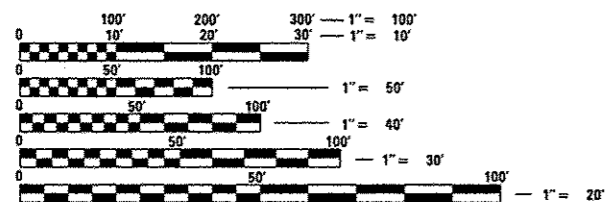
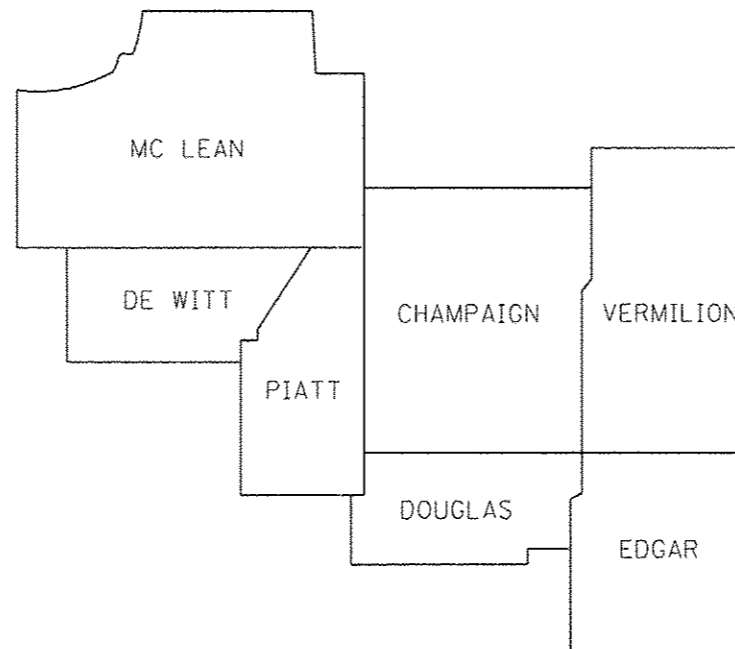
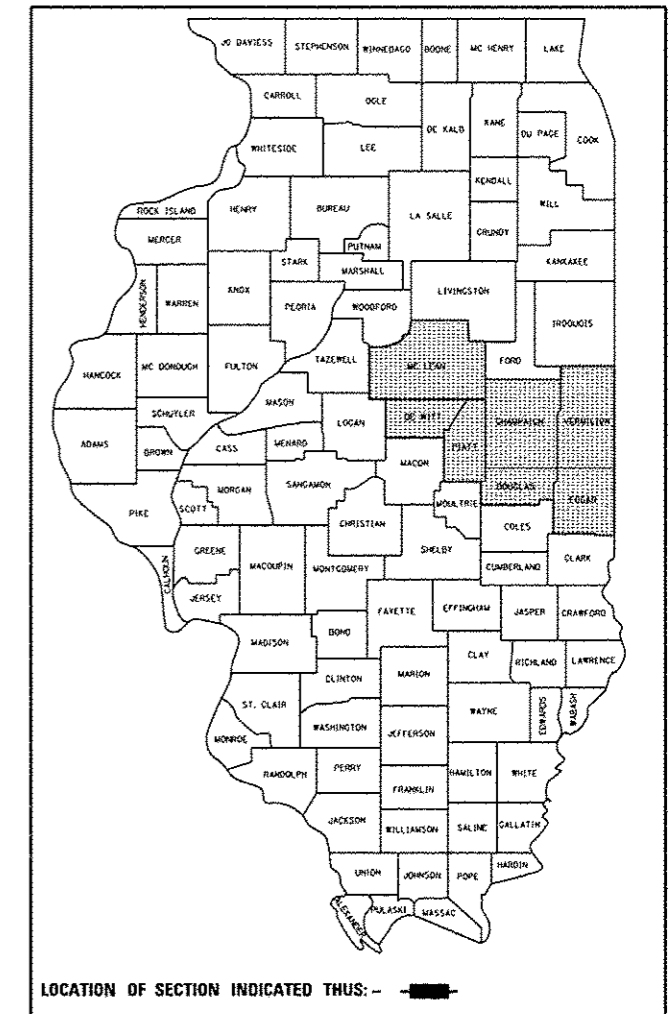
VARIOUS ROUTES  
SECTION D5 GUARDRAIL & FENCE REPAIR-2013

GUARDRAIL & FENCE REPAIRS  
VARIOUS COUNTIES

C-95-005-13

F.A. RTE.	SECTION	COUNTY	TOTAL SHEETS	SHEET NO.
VAR		ILLINOIS	19	1
CONTRACT NO. 70A19				

D-95-005-13



FULL SIZE PLANS HAVE BEEN PREPARED USING STANDARD ENGINEERING SCALES. REDUCED SIZED PLANS WILL NOT CONFORM TO STANDARD SCALES. IN MAKING MEASUREMENTS ON REDUCED PLANS, THE ABOVE SCALES MAY BE USED.

J.U.L.I.E.  
JOINT UTILITY LOCATION INFORMATION FOR EXCAVATION  
1-800-892-0123  
OR 811

PROJECT ENGINEER JASON STULTS  
PHONE NUMBER: (217) 465-4181

CONTRACT NO. 70A19

STATE OF ILLINOIS  
DEPARTMENT OF TRANSPORTATION  
DIVISION OF HIGHWAYS

SUBMITTED FEB. 8 2013  
Joseph E. Cowie  
DEPUTY DIRECTOR OF HIGHWAYS, REGION ENGINEER *JEC*

March 22 2013  
John D. Baranzoni, P.E.  
ENGINEER OF DESIGN AND ENVIRONMENT *JDB*

March 22 2013  
Omer Osman, P.E.  
DIRECTOR OF HIGHWAYS, CHIEF ENGINEER *OO*

**PRINTED BY THE AUTHORITY  
OF THE STATE OF ILLINOIS**



# SUMMARY OF QUANTITIES

LOCATION OF WORK:

VARIOUS ROUTES      VARIOUS ROUTES      VARIOUS ROUTES

VARIOUS COUNTIES      VARIOUS COUNTIES      VARIOUS COUNTIES

CONSTRUCTION TYPE CODE:

0021      0021      0021  
 100% STATE      100% STATE      100% STATE  
 MCHD      CONTRACT MAINT      HTC

CODE NO	ITEM	UNIT	TOTAL QUANTITY	100% STATE MCHD	100% STATE CONTRACT MAINT	100% STATE HTC
63000001	STEEL PLATE BEAM GUARDRAIL, TYPE A, 6 FOOT POSTS	FOOT	200.0	170.0	30.0	
63000003	STEEL PLATE BEAM GUARDRAIL, TYPE A, 9 FOOT POSTS	FOOT	25.0	25.0		
63000370	LONG-SPAN GUARDRAIL OVER CULVERT, 25 FT SPAN	FOOT	175.0	175.0		
63100045	TRAFFIC BARRIER TERMINAL, TYPE 2	EACH	2.0	1.0	1.0	
63100070	TRAFFIC BARRIER TERMINAL, TYPE 5	EACH	1.0	1.0		
63100085	TRAFFIC BARRIER TERMINAL, TYPE 6	EACH	2.0	1.0	1.0	
63100087	TRAFFIC BARRIER TERMINAL, TYPE 6A	EACH	1.0	1.0		
63100089	TRAFFIC BARRIER TERMINAL, TYPE 6B	EACH	1.0	1.0		
63100095	TRAFFIC BARRIER TERMINAL, TYPE 8	EACH	1.0	1.0		
63100101	TRAFFIC BARRIER TERMINAL, TYPE 9	EACH	1.0	1.0		
63100105	TRAFFIC BARRIER TERMINAL, TYPE 10	EACH	1.0	1.0		
63100115	TRAFFIC BARRIER TERMINAL, TYPE 12	EACH	1.0	1.0		
63100167	TRAFFIC BARRIER TERMINAL, TYPE 1 (SPECIAL) TANGENT	EACH	4.0	3.0	1.0	
63100169	TRAFFIC BARRIER TERMINAL, TYPE 1 (SPECIAL) FLARED	EACH	4.0	3.0	1.0	

\*05 GUARDRAIL & FENCE REPAIR-2013

FILE NAME :	USER NAME : ceo-lockjd	DESIGNED -	REVISED -	<b>STATE OF ILLINOIS DEPARTMENT OF TRANSPORTATION</b>	<b>SUMMARY OF QUANTITIES</b>	F.A. RTE.	SECTION	COUNTY	TOTAL SHEETS	SHEET NO.
ct:\pw\work\p\midot\ceo-lockjd\0331926\070419-shl-500.dgn		DRAWN -	REVISED -			VAR.	*	VARIOUS	19	3
MODEL NAME :	PLOT SCALE : 48.0000 ' / 1"	CHECKED -	REVISED -		SCALE:			CONTRACT NO. 70A19		
	PLOT DATE : 2/8/2013	DATE -	REVISED -		SHEET 1 OF 5 SHEETS	STA.	TO STA.	ILLINOIS FED. AID PROJECT		



# SUMMARY OF QUANTITIES

LOCATION OF WORK:

VARIOUS  
ROUTES

VARIOUS  
ROUTES

VARIOUS  
ROUTES

VARIOUS  
COUNTIES

VARIOUS  
COUNTIES

VARIOUS  
COUNTIES

CONSTRUCTION TYPE CODE:

0021

0021

0021

TOTAL  
QUANTITY

100% STATE  
MCHD

100% STATE  
CONTRACT MAINT

100% STATE  
HTCB

CODE NO	ITEM	UNIT	TOTAL QUANTITY	100% STATE MCHD	100% STATE CONTRACT MAINT	100% STATE HTCB
X0325899	REPAIR HIGH TENSION CABLE ( GIBRALTAR)	FOOT	850.0	250.0	250.0	350.0
X0325901	REPAIR POSTS ( GIBRALTAR)	EACH	85.0	25.0	25.0	35.0
X0325975	REPAIR HIGH TENSION CABLE SYSTEM END SECTION ( GIBRALTAR)	EACH	4.0	1.0	1.0	2.0
X0326201	REPAIR HIGH TENSION CABLE ( TRINITY)	FOOT	150.0	45.0	40.0	65.0
X0326202	REPAIR POSTS ( TRINITY)	EACH	15.0	3.0	4.0	8.0
X0326203	REPAIR HIGH TENSION CABLE SYSTEM END SECTION ( TRINITY)	EACH	2.0	1.0		1.0
X6330725	STEEL PLATE BEAM GUARDRAIL ( SHORT RADIUS)	FOOT	25.0		25.0	
X6331101	TUBULAR THRIE BEAM	FOOT	25.0	25.0		
X6331110	STEEL POSTS, SPECIAL	EACH	2.0	2.0		
X6340205	GUARD POSTS REMOVAL	EACH	10.0	10.0		
X6432110	REPLACE IMPACT ATTENUATORS (NON-REDIRECTIVE), TEST LEVEL 3	EACH	40.0	34.0	6.0	
X6640594	CHAIN LINK FENCE POST 4'	EACH	35.0	20.0	15.0	
X6640601	CHAIN LINK FENCE POST 6'	EACH	10.0	5.0	5.0	
X7010216	TRAFFIC CONTROL AND PROTECTION, ( SPECIAL)	L SUM	1.0	0.6	0.3	0.1

\*05 GUARDRAIL & FENCE REPAIR-2013

FILE NAME *	USER NAME *	DESIGNED -	REVISED -	<b>STATE OF ILLINOIS DEPARTMENT OF TRANSPORTATION</b>	<b>SUMMARY OF QUANTITIES</b>			F.A. RTE.	SECTION	COUNTY	TOTAL SHEETS	SHEET NO.
cr:\pwork\pwork\ceerlock\j\d8331926-0370419-shr-500.dgn	ceerlock	DRAWN -	REVISED -					VAR.	*	VARIOUS	19	5
#MODELNAME*	PLOT SCALE : 40.0000 ' / in.	CHECKED -	REVISED -		SCALE:	SHEET 3 OF 5 SHEETS	STA.	TO STA.	CONTRACT NO. 70A19			
	PLOT DATE : 2/6/2013	DATE -	REVISED -						ILLINOIS FED. AID PROJECT			



# SUMMARY OF QUANTITIES

LOCATION OF WORK:

VARIOUS ROUTES      VARIOUS ROUTES      VARIOUS ROUTES

VARIOUS COUNTIES      VARIOUS COUNTIES      VARIOUS COUNTIES

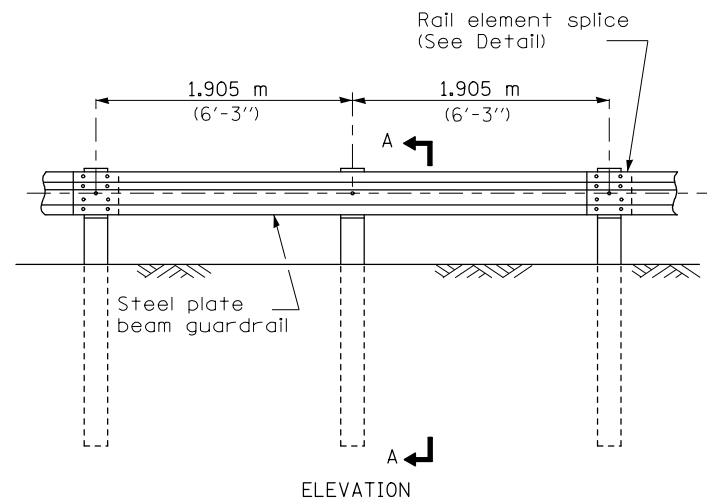
CONSTRUCTION TYPE CODE:

0021      0021      0021  
 100% STATE      100% STATE      100% STATE  
 MCHD      CONTRACT MAINT      HTC

CODE NO	ITEM	UNIT	TOTAL QUANTITY	100% STATE MCHD	100% STATE CONTRACT MAINT	100% STATE HTC
Z0053400	REPAIR TRAFFIC BARRIER TERMINAL, TYPE 8	EACH	1.0	1.0		
Z0053500	REPAIR TRAFFIC BARRIER TERMINAL, TYPE 9	EACH	1.0	1.0		
Z0053575	REPAIR TRAFFIC BARRIER TERMINAL, TYPE 12	EACH	1.0	1.0		

\*05 GUARDRAIL & FENCE REPAIR-2013

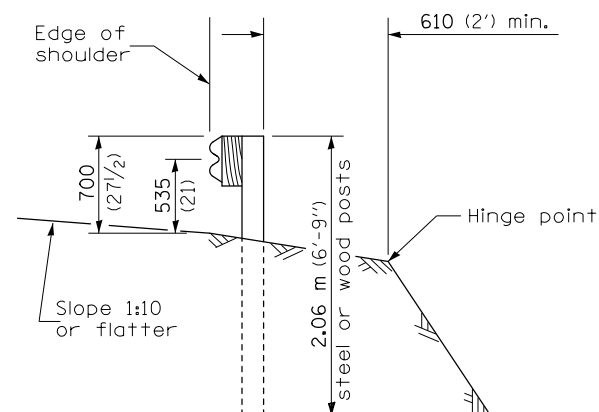
FILE NAME :	USER NAME : ceer-lock.jt	DESIGNED -	REVISED -	<b>STATE OF ILLINOIS DEPARTMENT OF TRANSPORTATION</b>	<b>SUMMARY OF QUANTITIES</b>	F.A. RTE.	SECTION	COUNTY	TOTAL SHEETS	SHEET NO.
ci:\pw-work\puidot\ceer-lock\jtd0331926\070419-sh-500.dgn		DRAWN -	REVISED -			VAR.	*	VARIOUS	19	7
*MODELNAME*	PL01 SCALE = 48.0000' / in. PLOT DATE = 2/8/2013	CHECKED -	REVISED -		SCALE:	SHEET 5 OF 5 SHEETS		STA.	TO STA.	
								ILLINOIS FED. AID PROJECT CONTRACT NO. 70A19		



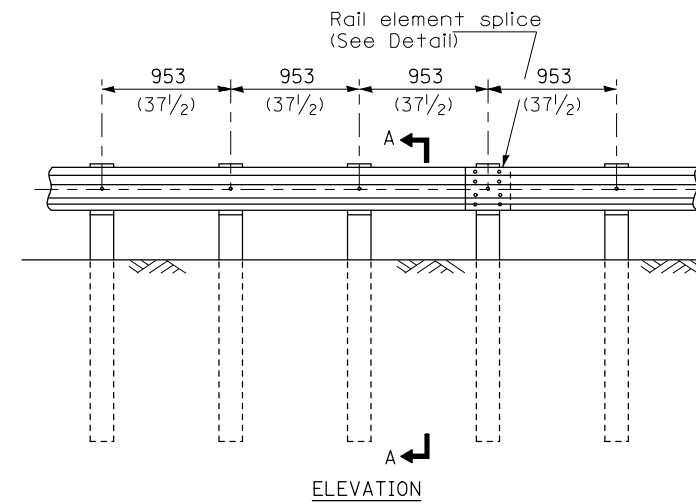
ELEVATION

**TYPE A**

1.905 m (6'-3") Typical post spacing



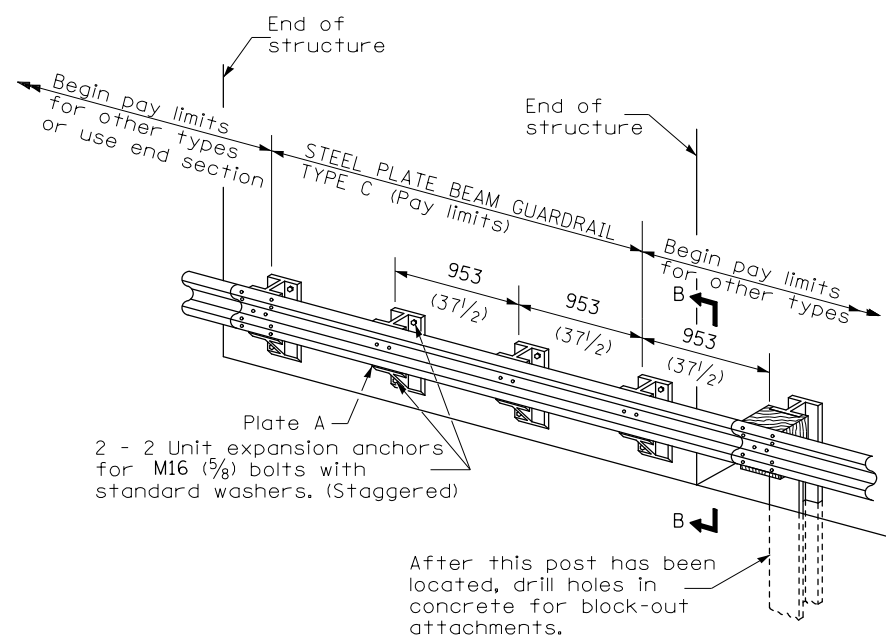
SECTION A-A



ELEVATION

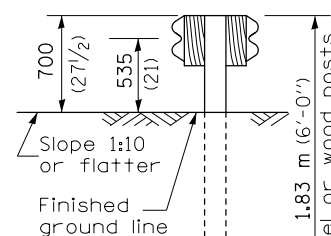
**TYPE B**

953 (37 1/2) Closed post spacing

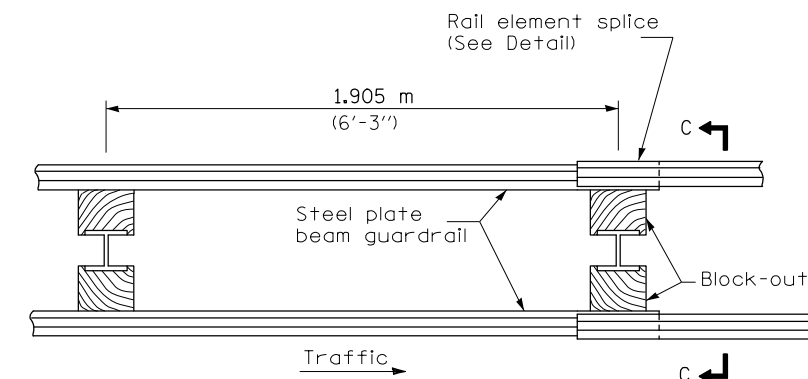


**TYPE C**

953 (37 1/2) Block-out spacing



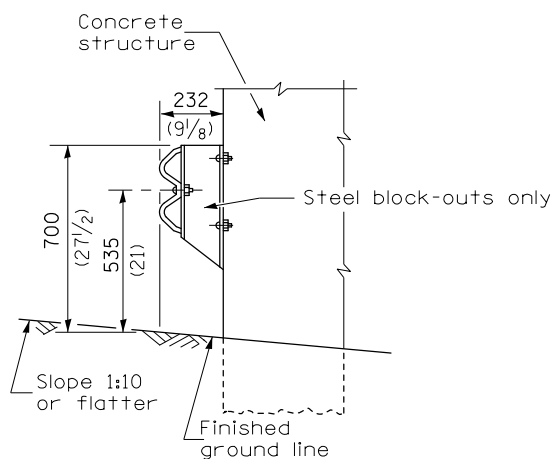
SECTION C-C



PLAN

**TYPE D**

Double steel plate beam guardrail  
1.905 m (6'-3") typical post spacing



SECTION B-B

**GENERAL NOTES**

All slope ratios are expressed as units of vertical displacement to units of horizontal displacement (V:H).

All dimensions are in millimeters (Inches) unless otherwise shown.

DATE	REVISIONS
4-1-06	Deleted plate washer F.
1-1-05	Rev. post in impervious material on sheet 4.

**STEEL PLATE BEAM GUARDRAIL**

(Sheet 1 of 4)

**STANDARD 630001-06**

FILE NAME =	USER NAME = ceerlockjd	DESIGNED -	REVISED -
et:\pw\work\p1dot\ceerlockjd\0331926\0870A19-sht-details.dgn		DRAWN -	REVISED -
\$MODELNAME\$	PLOT SCALE = 40.0000' / in.	CHECKED -	REVISED -
	PLOT DATE = 2/8/2013	DATE - 02/04/13	REVISED -

**STATE OF ILLINOIS  
DEPARTMENT OF TRANSPORTATION**

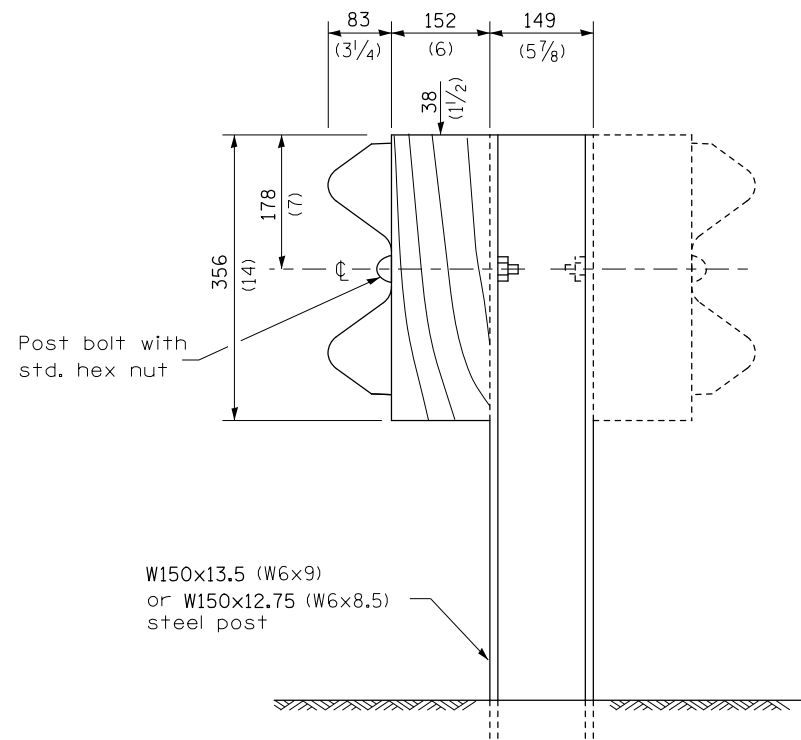
**DETAIL OF 27 1/2" STEEL PLATE BEAM GUARDRAIL**

SCALE: SHEET 1 OF 4 SHEETS STA. TO STA.

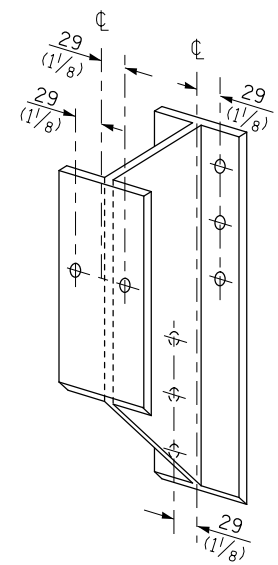
\*D5 GUARDRAIL & FENCE REPAIR-2013

F.A. RTE.	SECTION	COUNTY	TOTAL SHEETS	SHEET NO.
VAR.	*	VARIOUS	19	8
CONTRACT NO. 70A19			ILLINOIS FED. AID PROJECT	

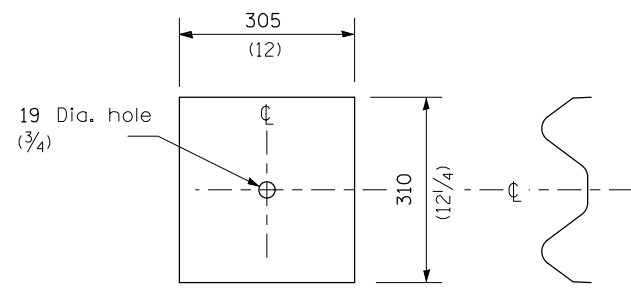




**STEEL POST CONSTRUCTION**



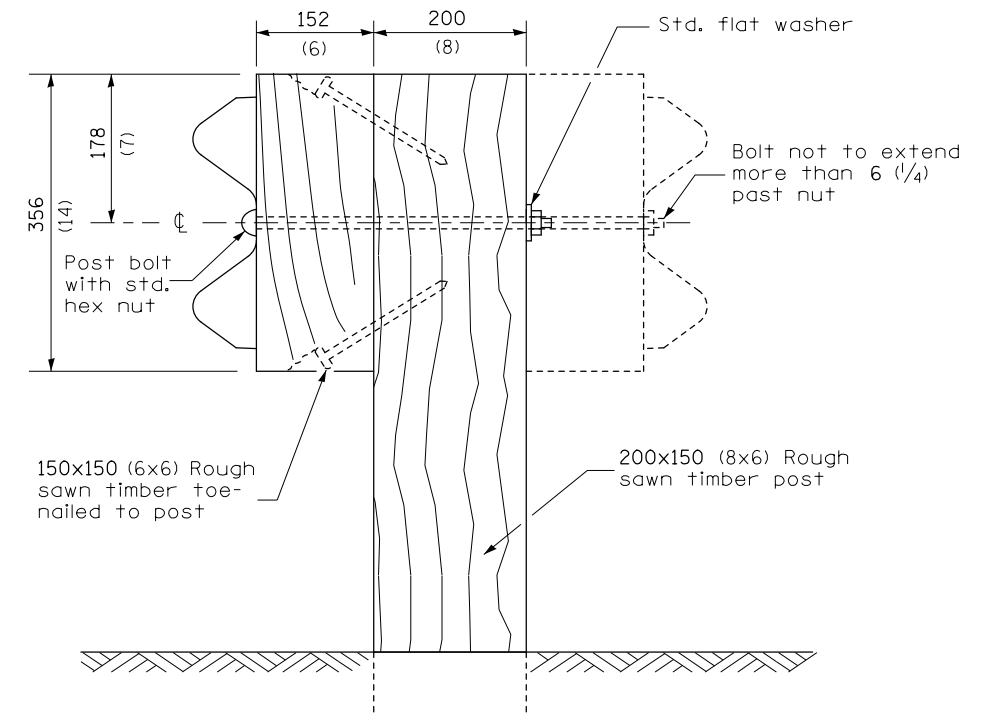
**STEEL BLOCK-OUT DETAIL**



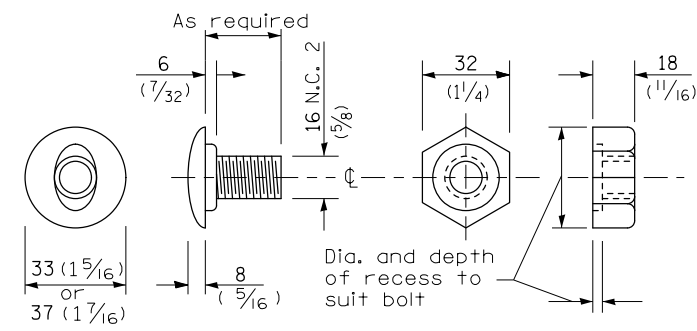
NOTE

Plate A shall be placed between rail element and block-out at non-splice mounting points only when steel block-outs are used.

**PLATE A**



**WOOD POST CONSTRUCTION**



**POST OR SPLICE BOLT & NUT**

**STEEL PLATE BEAM  
GUARDRAIL**

(Sheet 2 of 4)

**STANDARD 630001-06**

FILE NAME =	USER NAME = ceerlockjd	DESIGNED -	REVISED -
c:\pwork\work\pwork\ceerlockjd\0331926\03	70A19-sht-details.dgn	DRAWN -	REVISED -
	PLOT SCALE = 40.0000' / in.	CHECKED -	REVISED -
\$MODELNAME\$	PLOT DATE = 2/8/2013	DATE - 02/04/13	REVISED -

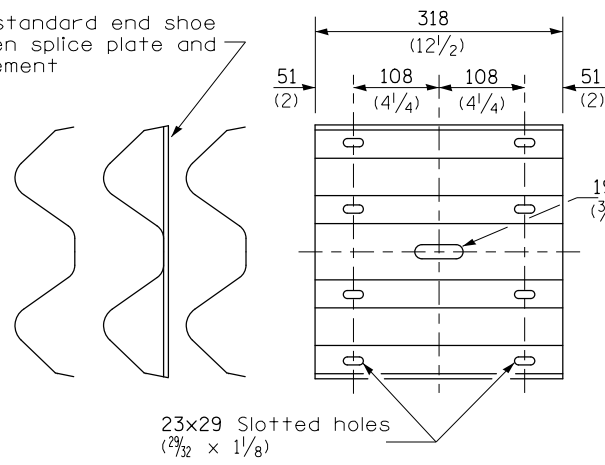
**STATE OF ILLINOIS  
DEPARTMENT OF TRANSPORTATION**

**DETAIL OF 27 1/2" STEEL PLATE BEAM GUARDRAIL**

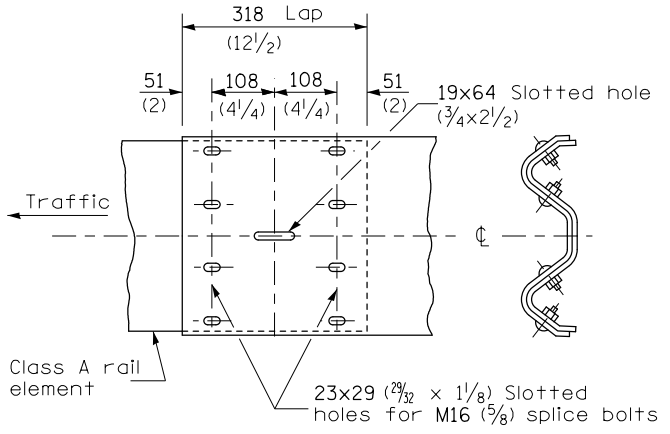
SCALE: SHEET 2 OF 4 SHEETS STA. TO STA.

*D5 GUARDRAIL & FENCE REPAIR-2013				
F.A. RTE.	SECTION	COUNTY	TOTAL SHEETS	SHEET NO.
VAR.	•		19	9
			CONTRACT NO. 70A19	
ILLINOIS FED. AID PROJECT				

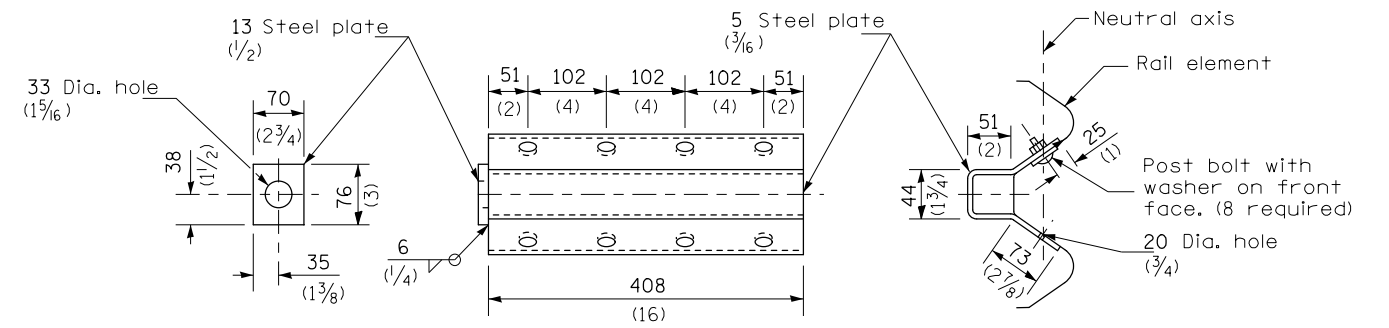
Place standard end shoe between splice plate and rail element



**SPLICE PLATE**

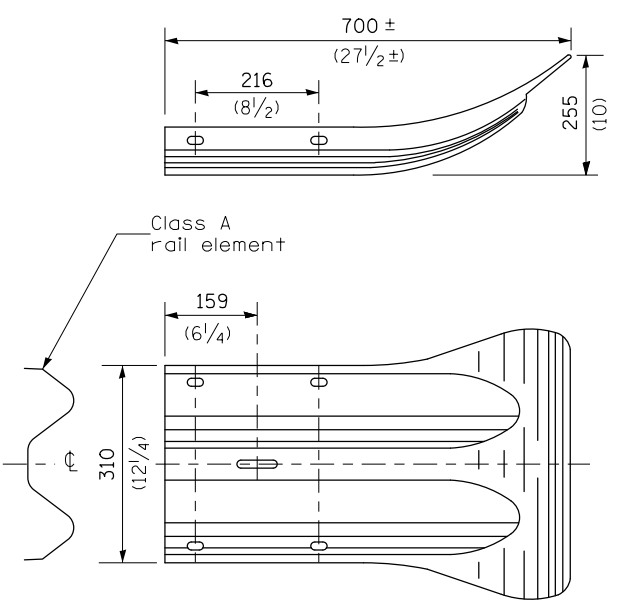


**RAIL ELEMENT SPLICE**

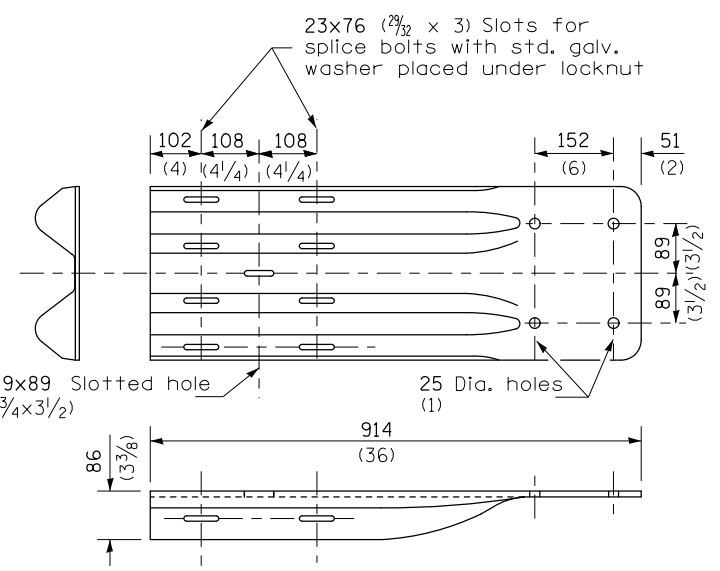


NOTE  
Anchor plate T shall be used to attach cable assembly to guardrail when required on traffic barrier terminals.

**ANCHOR PLATE T DETAILS**



**END SECTION**

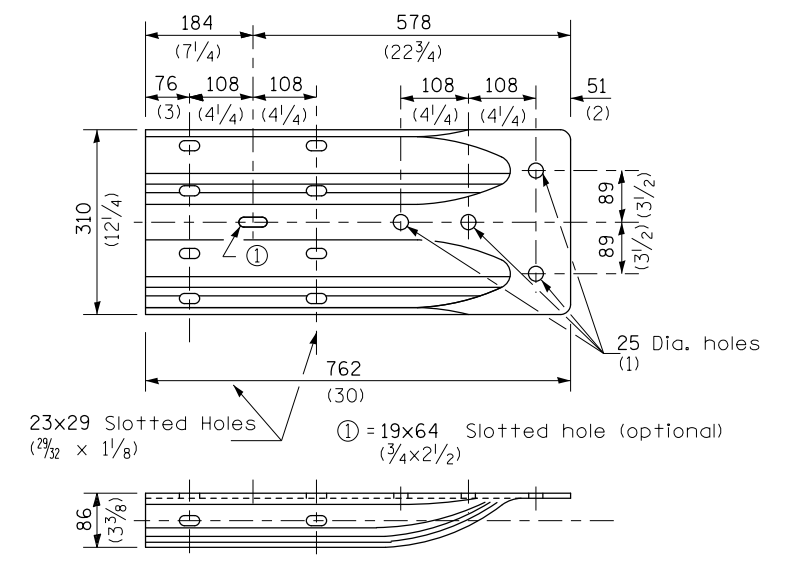


NOTE  
When end shoe is attached to a bridge parapet which has an expansion joint, the bolts shall be provided with a locknut or double nut and shall be tightened only to a point that will allow guardrail movement.

The standard end shoe shall be attached to the concrete with pre-drilled or self-drilling anchor bolts. The anchor cone shall be set flush with the surface of the concrete.

Externally threaded studs protruding from the surface of the concrete will not be permitted.

**END SHOE**



**ALTERNATE END SHOE**

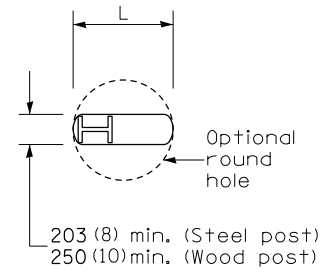
**STEEL PLATE BEAM  
GUARDRAIL**

(Sheet 3 of 4)

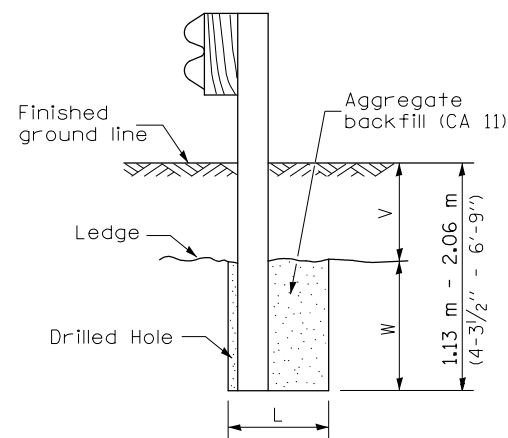
**STANDARD 630001-06**

FILE NAME =	USER NAME = ceerlockjd	DESIGNED -	REVISED -	<b>STATE OF ILLINOIS DEPARTMENT OF TRANSPORTATION</b>	<b>DETAIL OF 27 1/2" STEEL PLATE BEAM GUARDRAIL</b>		F.A. RTE.	SECTION	COUNTY	TOTAL SHEETS	SHEET NO.
ci:\pw\work\p\midot\ceerlockjd\0331926\0870A19-sht-details.dgn	PLOT SCALE = 48.0000' / in.	DRAWN -	REVISED -				VAR.	•	VARIOUS	19	10
*MODELNAME*	PLOT DATE = 2/8/2013	CHECKED -	REVISED -				CONTRACT NO. 70A19			ILLINOIS FED. AID PROJECT	
		DATE - 02/04/13	REVISED -				SCALE:	SHEET 3	OF 4 SHEETS	STA.	TO STA.

\*D5 GUARDRAIL & FENCE REPAIR-2013



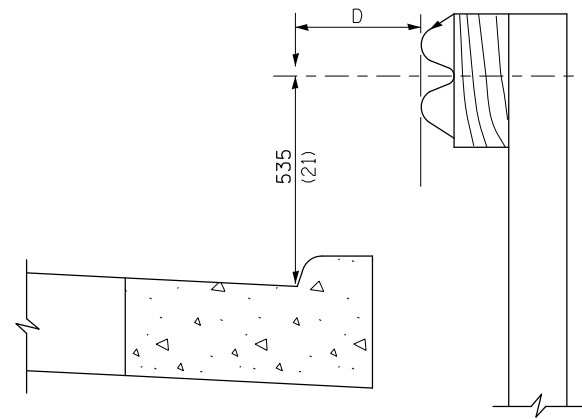
PLAN



Note:  
Ledge line is top of rock ledge or hard slag fill.

ELEVATION

**FOOTING FOR POST WHEN IMPERVIOUS MATERIAL IS ENCOUNTERED**

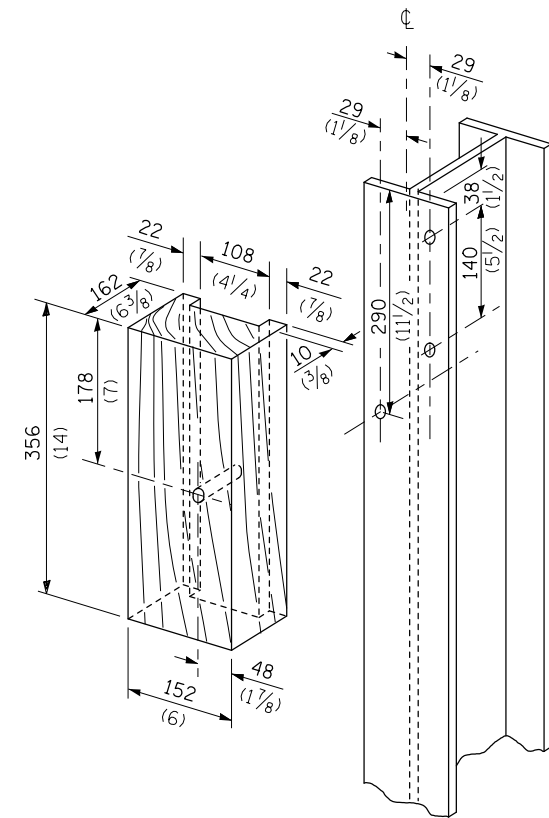


Note:

If it is necessary for D to be more than 300 (12) and less than 3.0 m (10'-0") type M-5 (M-2) curb and gutter (Std. 606001) shall be used in front of and in advance of the guardrail.

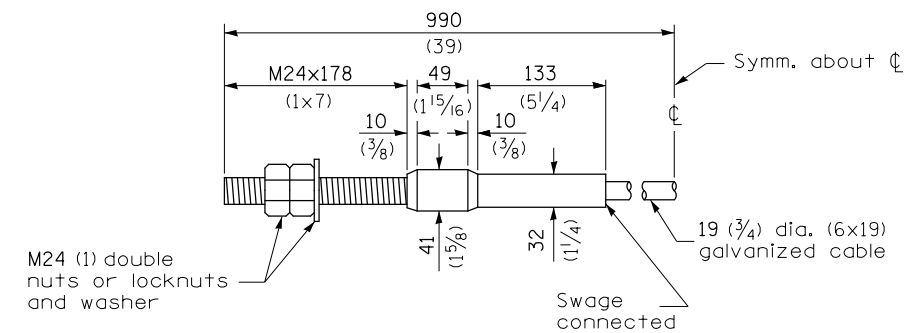
**GUARDRAIL PLACED BEHIND CURB**

(D = 0 desirable to 300 (12) maximum)



**WOOD BLOCK-OUT AND STEEL POST DETAILS**

V	W	L	
		Steel Post	Wood Post
0 - 460 (0 - 18)	610 (24)	530 (21)	580 (23)
>460 - 825 (>18 - 41.5)	305 (12)	203 (8)	250 (10)
>825 - 1.13 m (>41.5 - 53.5)	305 - 0 (12 - 0)	203 (8)	250 (10)



**CABLE ASSEMBLY**

(18,100 kg (40,000 lbs.) min. breaking strength)  
Tighten to taut tension.

**STEEL PLATE BEAM GUARDRAIL**

(Sheet 4 of 4)

**STANDARD 630001-06**

\*D5 GUARDRAIL & FENCE REPAIR-2013

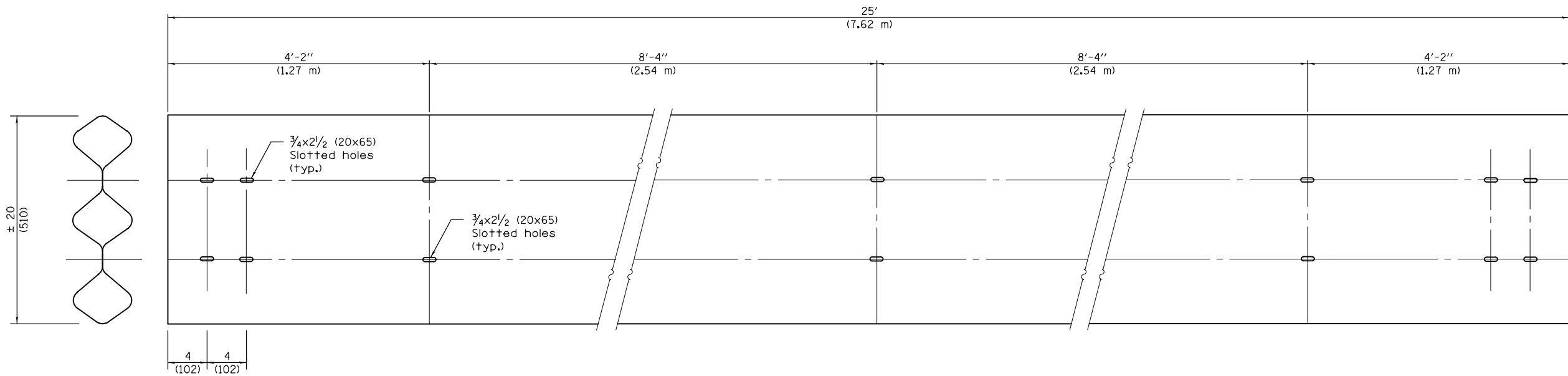
FILE NAME =	USER NAME = ceerlockjd	DESIGNED -	REVISED -
et:\pw\work\p\idot\ceerlockjd\0331926\08	70A19-sht-details.dgn	DRAWN -	REVISED -
	PLOT SCALE = 40.0000' / in.	CHECKED -	REVISED -
*MODELNAME*	PLOT DATE = 2/8/2013	DATE - 02/04/13	REVISED -

**STATE OF ILLINOIS  
DEPARTMENT OF TRANSPORTATION**

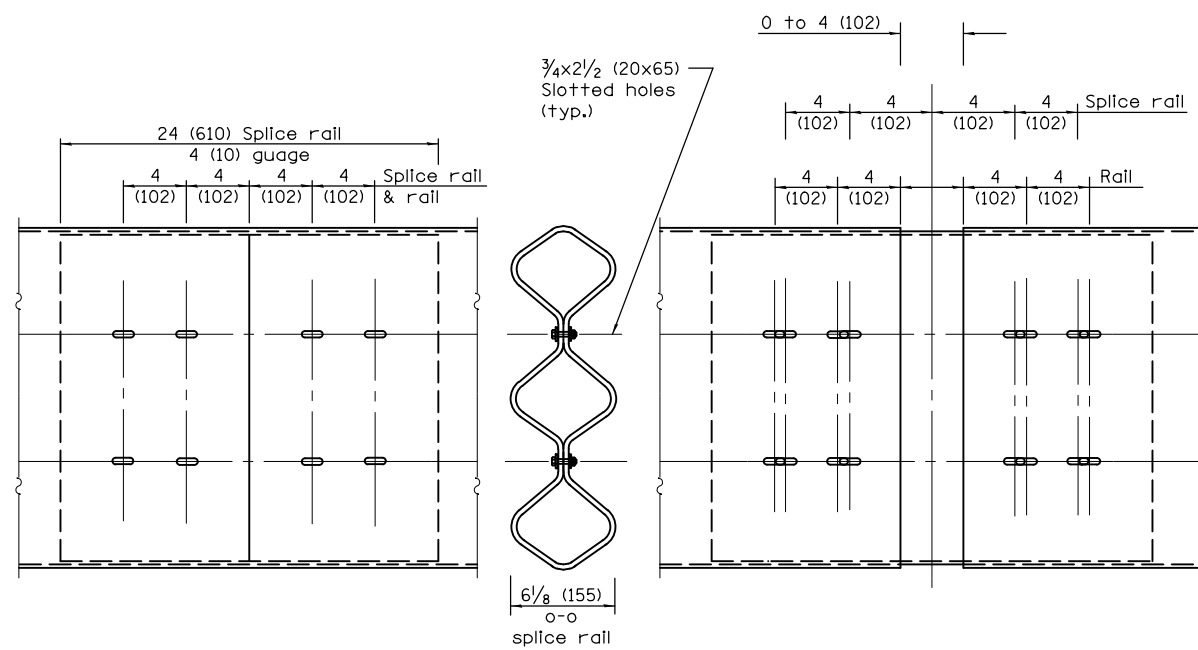
**DETAIL OF 27 1/2" STEEL PLATE BEAM GUARDRAIL**

SCALE: SHEET 4 OF 4 SHEETS STA. TO STA.

F.A. RTE.	SECTION	COUNTY	TOTAL SHEETS	SHEET NO.
	•		19	11
			CONTRACT NO. 70A19	
ILLINOIS FED. AID PROJECT				

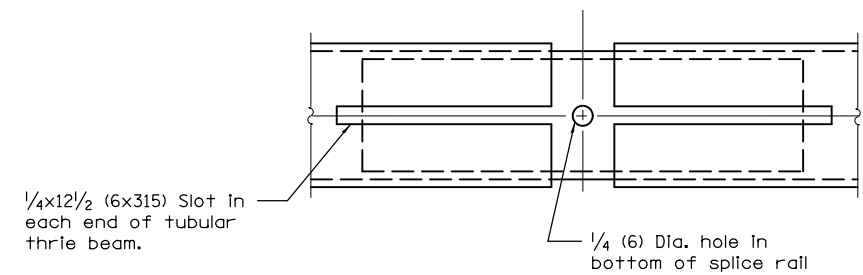


**TUBULAR THRIE BEAM FOR INTERNAL SPLICE JOINT**



**INTERNAL SPLICE JOINT**

**INTERNAL EXPANSION SPLICE JOINT**



**BOTTOM VIEW OF INTERNAL EXPANSION SPLICE JOINT**

**GENERAL NOTES**

Plate Washers B are to be placed under both heads and nuts of splicing bolts for internal splice and internal expansion splice joint.

Plate Washers C are to be placed under both heads and nuts of splicing bolts for lap expansion and internal lap splice joint.

See Standard 630001 for details of guardrail not shown.

All dimensions are in Inches (millimeters) unless otherwise shown.

**TUBULAR THRIE BEAM RETROFIT RAIL FOR BRIDGES**

(Sheet 1 of 3)

**STANDARD 509001-02**

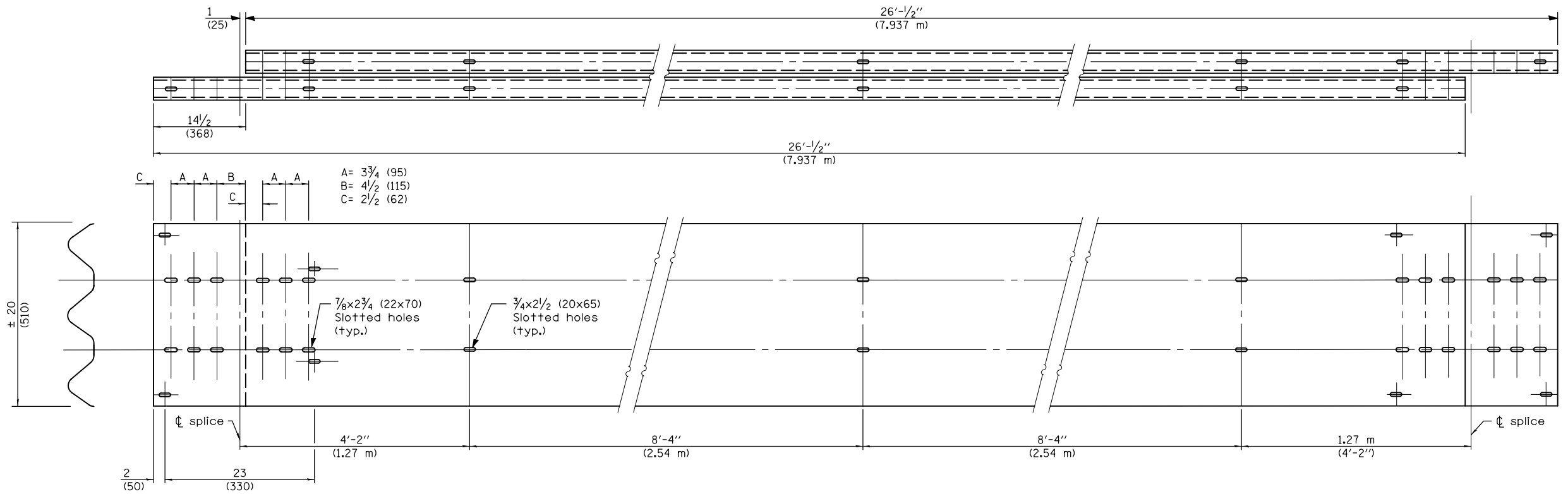
FILE NAME =	USER NAME = ceerlockjd	DESIGNED -	REVISED -
ci:\pw\work\p\idot\ceerlockjd\0331926\0370A19-sht-details.dgn		DRAWN -	REVISED -
	PLOT SCALE = 40.0000 ' / in.	CHECKED -	REVISED -
\$MODELNAME\$	PLOT DATE = 2/8/2013	DATE - 02/04/13	REVISED -

**STATE OF ILLINOIS  
DEPARTMENT OF TRANSPORTATION**

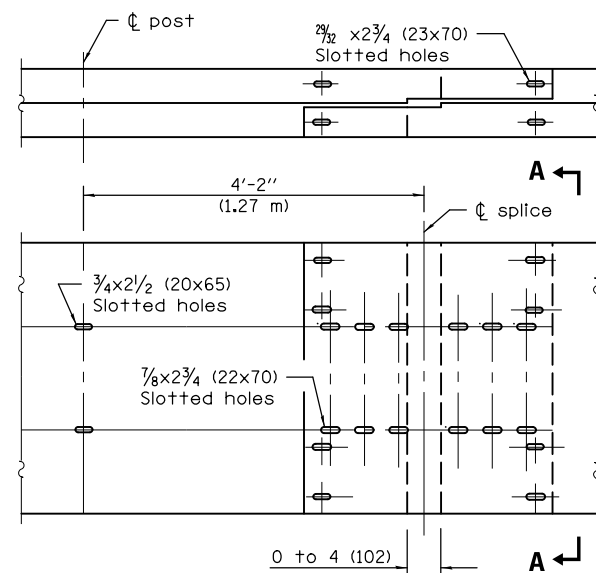
**PLAN DETAIL OF TUBULAR THRIE BEAM**

SCALE: SHEET 1 OF 3 SHEETS STA. TO STA.

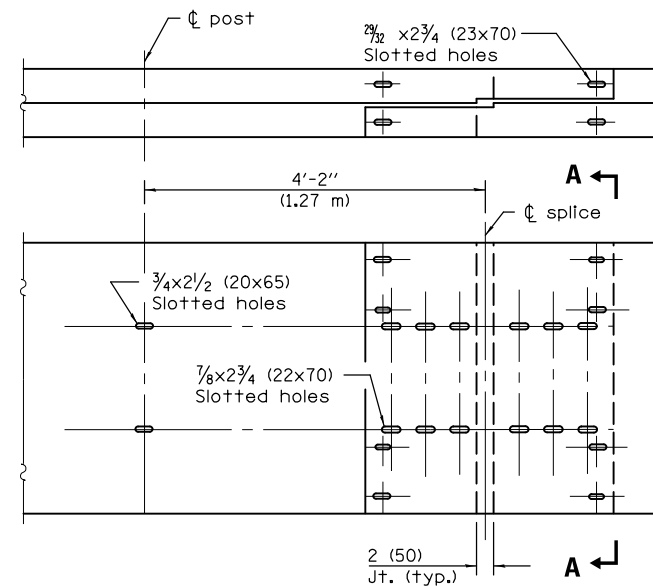
*D5 GUARDRAIL & FENCE REPAIR-2013			
F.A. RTE.	SECTION	COUNTY	TOTAL SHEETS
VAR.	*		19
			SHEET NO. 12
			CONTRACT NO. 70A19
ILLINOIS FED. AID PROJECT			



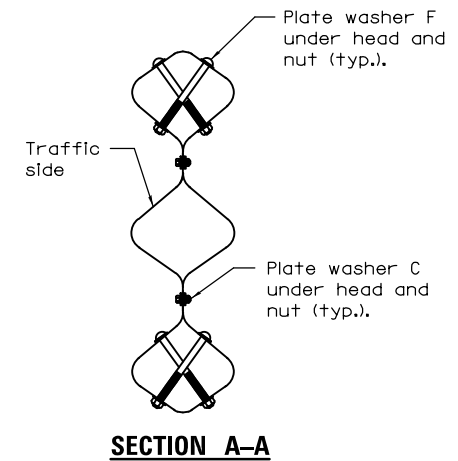
**TUBULAR THRIE BEAM FOR LAP SPLICE JOINT**



**LAP EXPANSION SPLICE JOINT**



**LAP SPLICE JOINT**



**SECTION A-A**

**TUBULAR THRIE BEAM  
RETROFIT RAIL FOR BRIDGES**

(Sheet 2 of 3)

**STANDARD 509001-02**

FILE NAME =	USER NAME = ceerlockjd	DESIGNED -	REVISED -
ei:\pw\work\p\id\ceerlockjd\0331926\03	70A19-sht-details.dgn	DRAWN -	REVISED -
	PLOT SCALE = 48.0000' / in.	CHECKED -	REVISED -
*MODELNAME*	PLOT DATE = 2/8/2013	DATE - 02/04/13	REVISED -

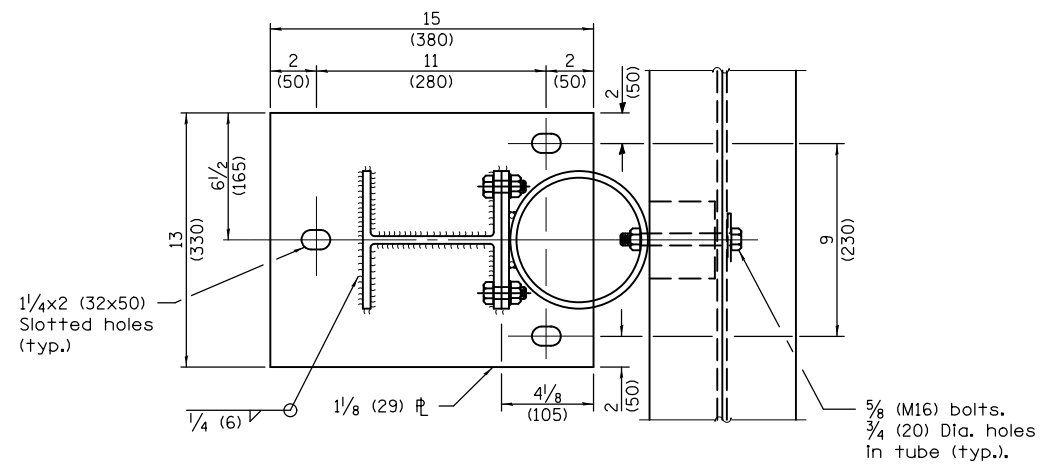
**STATE OF ILLINOIS  
DEPARTMENT OF TRANSPORTATION**

**PLAN DETAIL OF TUBULAR THRIE BEAM**

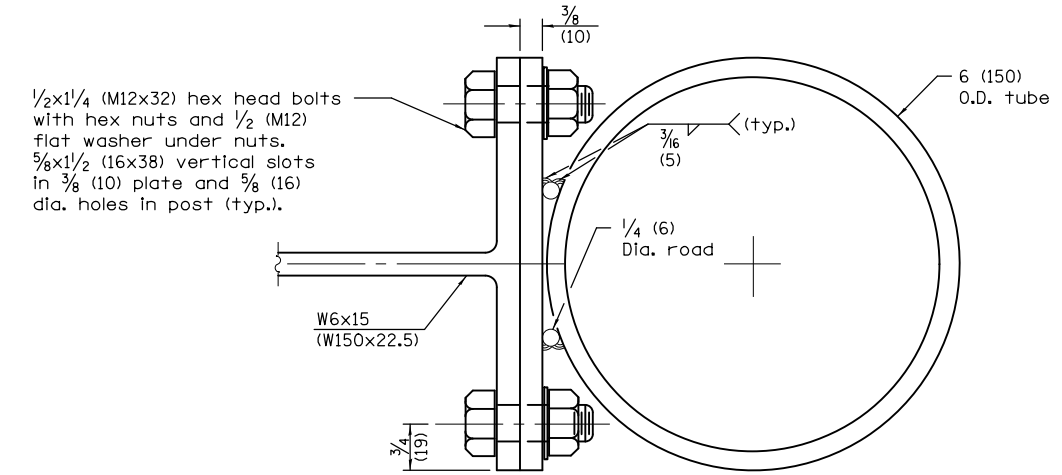
SCALE: SHEET 2 OF 3 SHEETS STA. TO STA.

\*D5 GUARDRAIL & FENCE REPAIR-2013

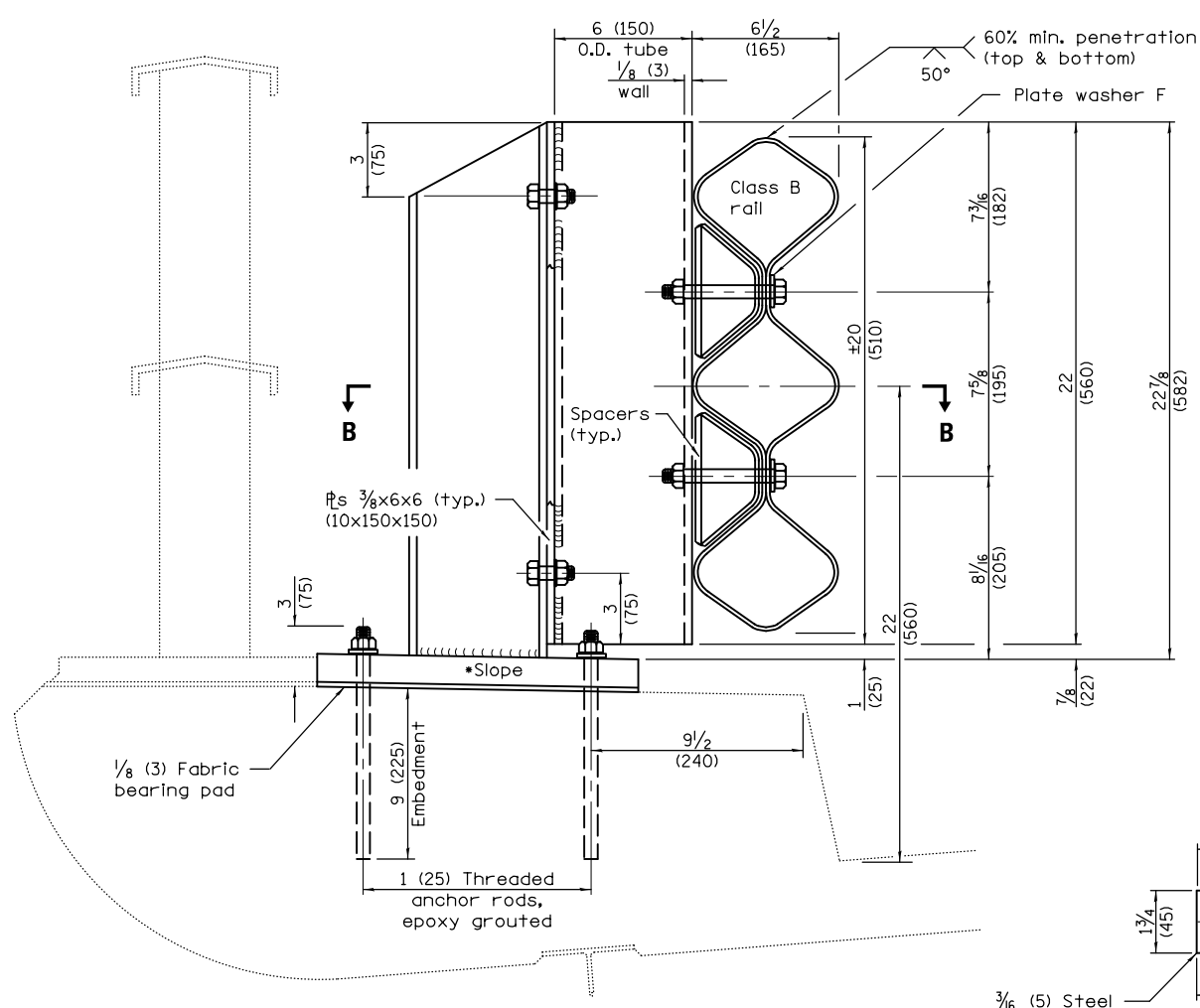
F.A. RTE.	SECTION	COUNTY	TOTAL SHEETS	SHEET NO.
VAR.	*	VARIOUS	19	13
			CONTRACT NO. 70A19	
ILLINOIS FED. AID PROJECT				



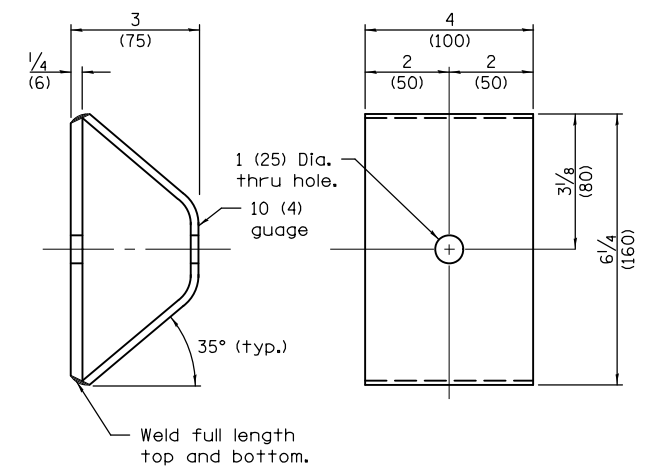
**SECTION B-B**



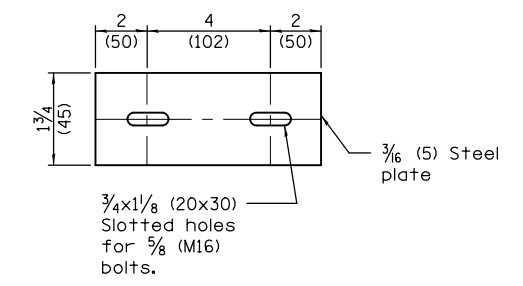
**TUBE TO POST ATTACHMENT**



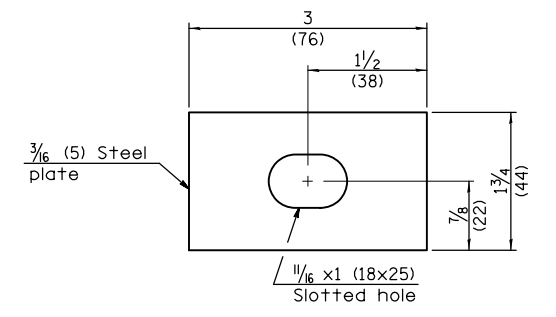
**POST**



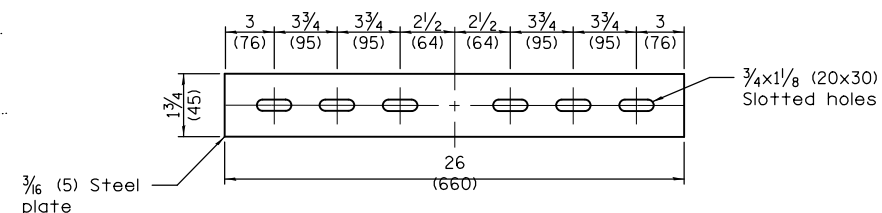
**SPACER**



**PLATE WASHER B**



**PLATE WASHER F**



**PLATE WASHER C**

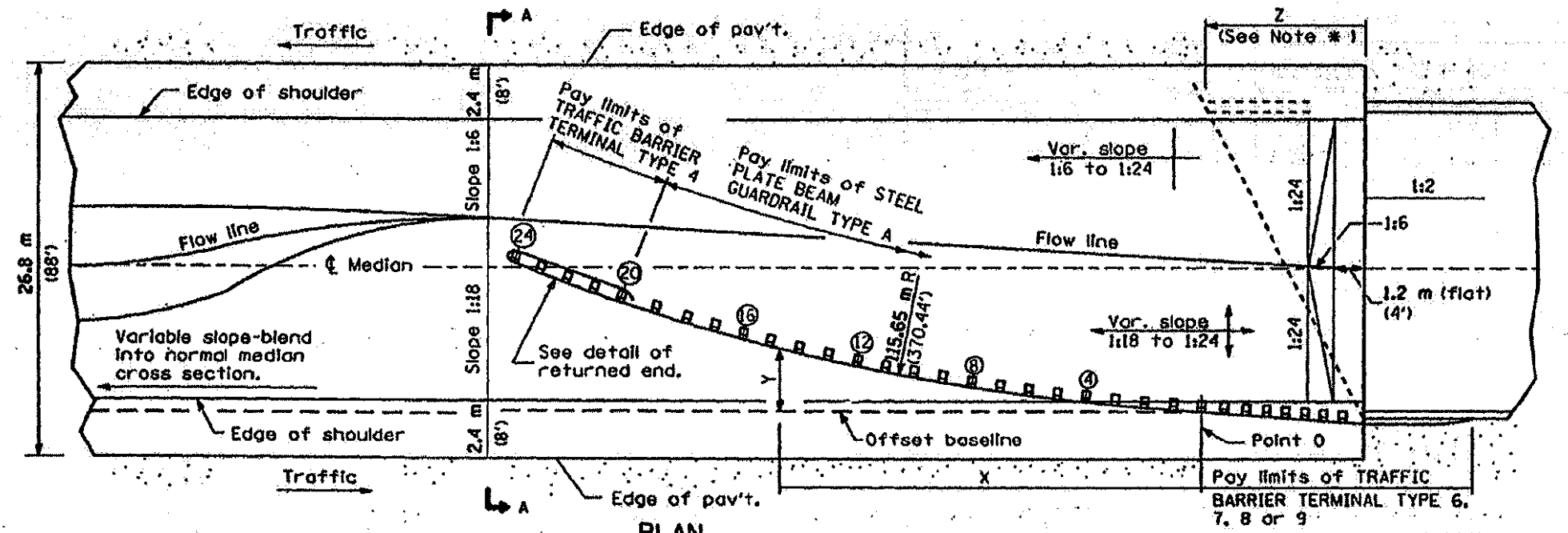
**TUBULAR THRIE BEAM  
RETROFIT RAIL FOR BRIDGES**  
(Sheet 3 of 3)

**STANDARD 509001-02**

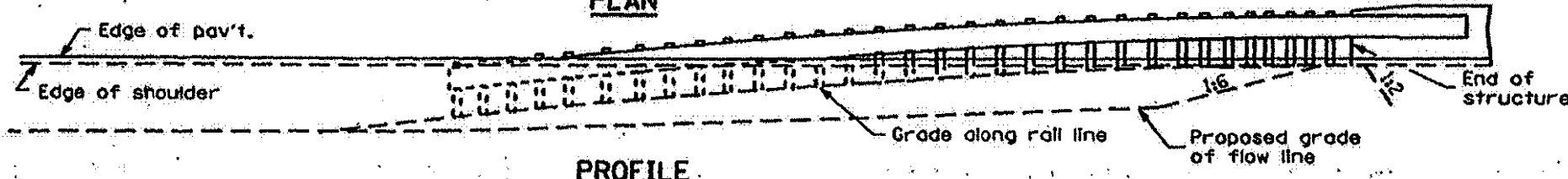
\* Cut bottom of post to slope

FILE NAME =	USER NAME = ceerlockjd	DESIGNED -	REVISED -	<b>STATE OF ILLINOIS DEPARTMENT OF TRANSPORTATION</b>	<b>PLAN DETAIL OF TUBULAR THRIE BEAM</b>		F.A. RTE.	SECTION	COUNTY	TOTAL SHEETS	SHEET NO.
et:\pw\work\p\midot\ceerlockjd\0331926\0370A19-sht-details.dgn	PLOT SCALE = 48.0000' / in.	DRAWN -	REVISED -				VAR.	.	VARIOUS	19	14
*MODELNAME*	PLOT DATE = 2/8/2013	CHECKED -	REVISED -				SCALE: SHEET 3 OF 3 SHEETS STA. TO STA.			CONTRACT NO. 70A19	
		DATE - 02/04/13	REVISED -				ILLINOIS FED. AID PROJECT				

\*D5 GUARDRAIL & FENCE REPAIR-2013



PLAN



PROFILE

ASSEMBLY FOR 26.8 m (88 ft.) MEDIAN

OFFSETS TO FACE OF RAIL		
POST	DISTANCE X (ft.)	OFFSET Y (ft.)
POINT 0	0 (0)	0 (0)
④	7.60 (24.93)	0.56 (1.83)
⑧	15.14 (49.68)	1.60 (5.28)
⑫	22.60 (74.16)	3.16 (10.37)
⑰	29.94 (98.23)	5.20 (17.05)
⑳	37.13 (121.83)	7.71 (25.31)
㉑	44.14 (144.83)	10.70 (35.09)

Offsets (Y) are measured between the face of rail and the offset baseline, which is parallel to the pavement edge and passes through point 0.

The location of point 0 will vary, being dependent on structure details and the type of traffic barrier terminal utilized.

GENERAL NOTES

See Standard 630001 for details of guard-rail not shown.

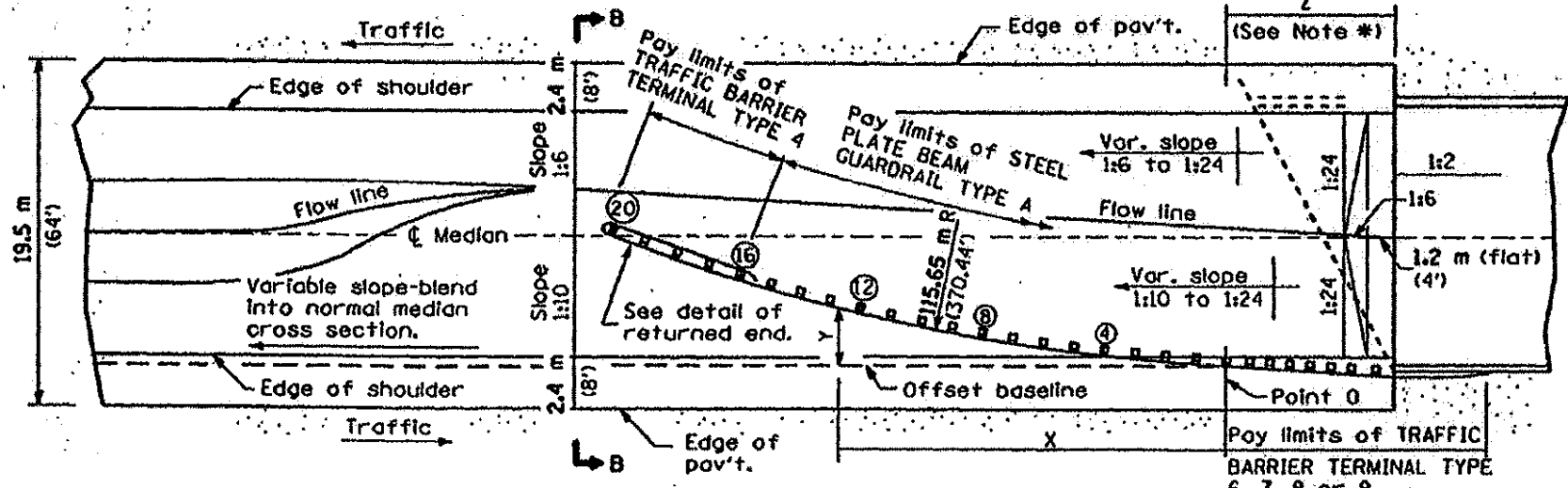
\* For dual structures skewed right forward, the nose of the Type 4 terminal shall be positioned longitudinally away from the structure for a distance equal to dimension Z. Appropriate adjustments to the length of the Type A guardrail and its offsets (Y) shall be calculated and used. All additional lengths of guardrail shall be in increments of 3.87 m (12'-6").

For dual structures that are 90°, or skewed left forward, the length of guardrail is appropriate.

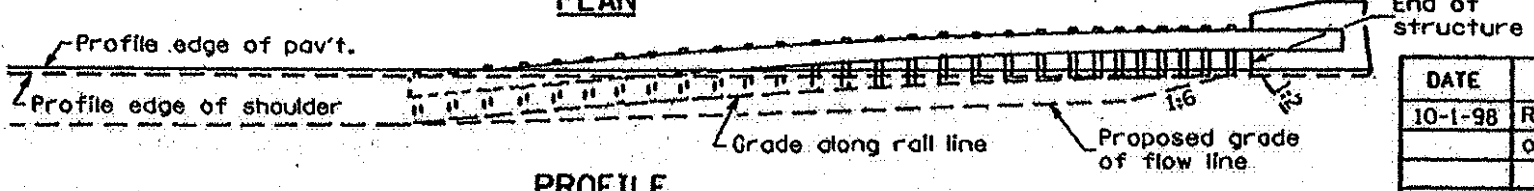
The bearing plate K shall be held in position by (2) two eight penny nails driven into the post and bent over the top of the plate.

All slopes are expressed as units of vertical displacement to units of horizontal displacement (V:H).

All dimensions are in millimeters (inches) unless otherwise shown.



PLAN



PROFILE

ASSEMBLY FOR 19.5 m (64 ft.) MEDIAN

DATE	REVISIONS
10-1-98	Revised distance in offset table.
1-1-97	Renum. Standard 2339-4.

TRAFFIC BARRIER TERMINAL TYPE 4

(Sheet 1 of 2)

STANDARD 631021-01

\*D5 GUARDRAIL & FENCE REPAIR-2013

Illinois Department of Transportation

PASSED October 1, 1998  
*Charles Kullback*  
 ENGINEER OF POLICY AND PROCEDURES

APPROVED October 1, 1998  
*Bill Swales*  
 ENGINEER OF DESIGN AND ENVIRONMENT

26-1-1 OFFSET

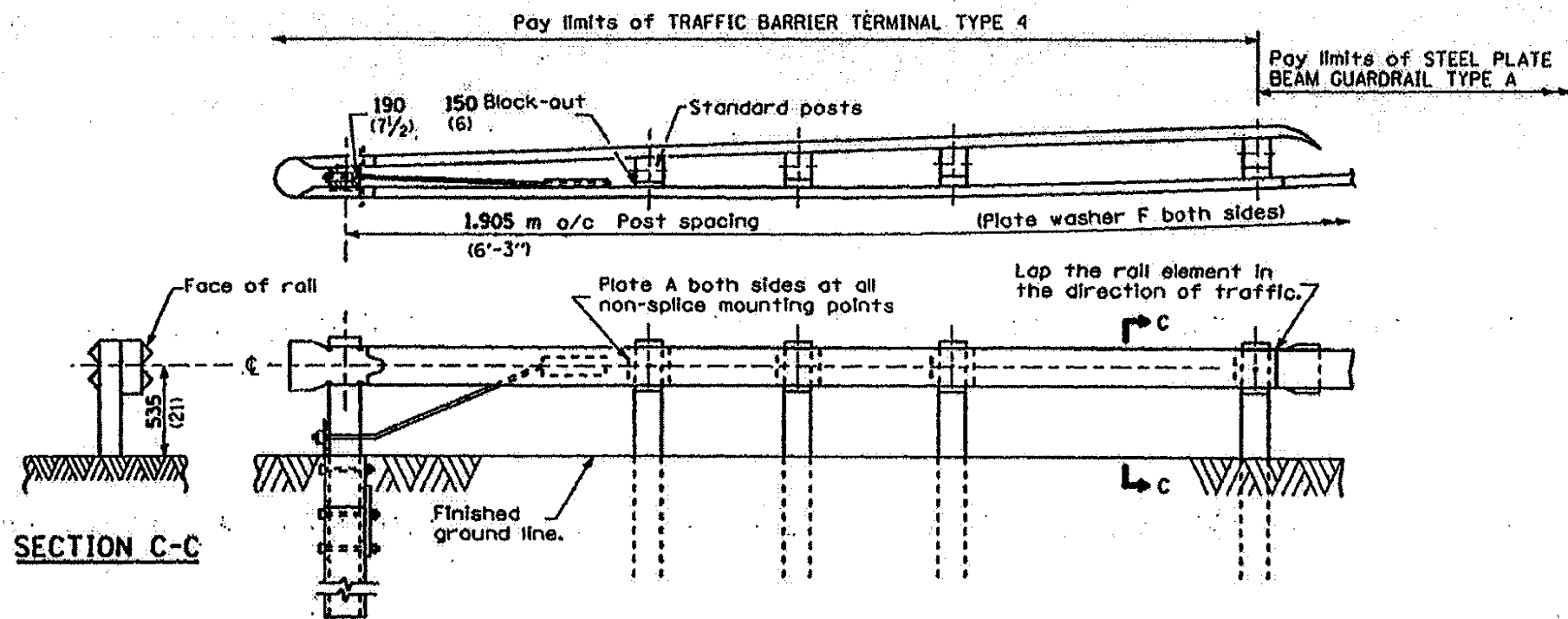
FILE NAME : c:\pwwork\pwwork\cearlock\j\d0331926\0370419-sht-details.dgn	DESIGNED -	REVISOR -
USER NAME : cearlockjd	DRAWN -	REVISION -
PLOT SCALE : 48.0000 / in.	CHECKED -	REVISION -
PLOT DATE : 2/8/2013	DATE : 02/04/13	REVISION -

STATE OF ILLINOIS  
DEPARTMENT OF TRANSPORTATION

PLAN DETAIL OF TRAFFIC BARRIER TERMINAL TYPE 4

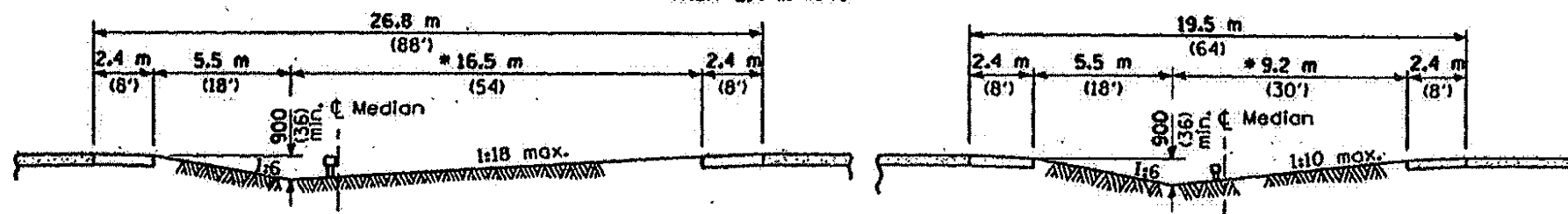
SCALE: SHEET 1 OF 2 SHEETS STA. TO STA.

F.A. RTE.	SECTION	COUNTY	TOTAL SHEETS	SHEET NO.
VAR.	.	VARIOUS	19	15
CONTRACT NO. 70A19			ILLINOIS FED. AID PROJECT	



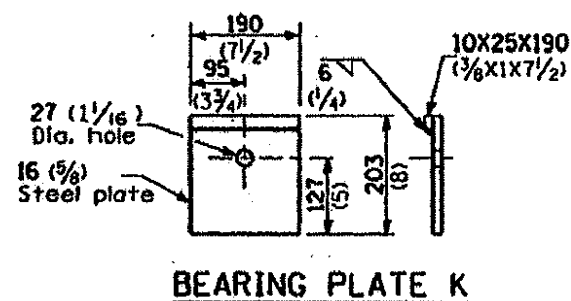
RETURNED END DETAIL

\* Adjust this dimension when the width of the shoulders is other than 2.4 m (8').

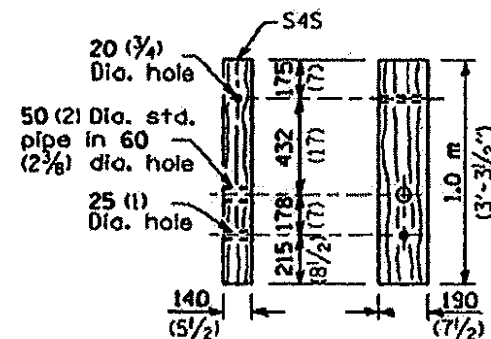


SECTION A-A

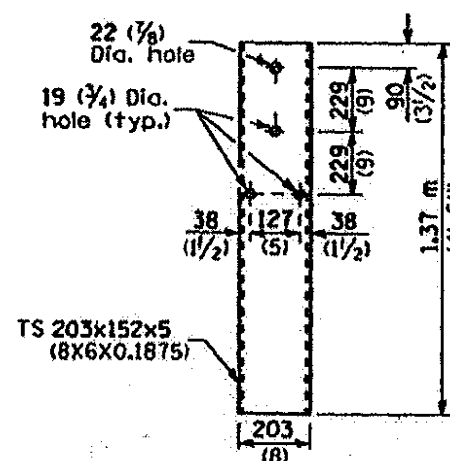
SECTION B-B



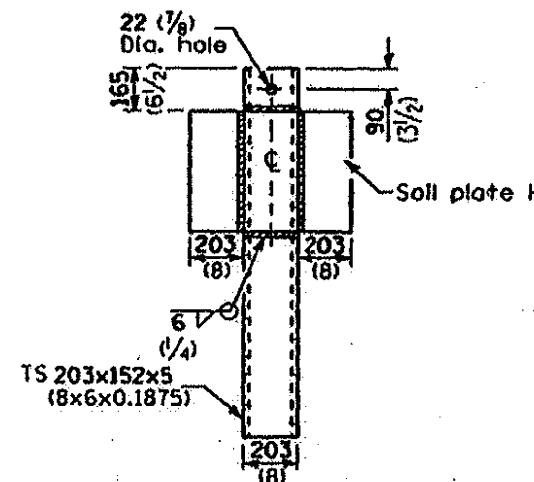
BEARING PLATE K



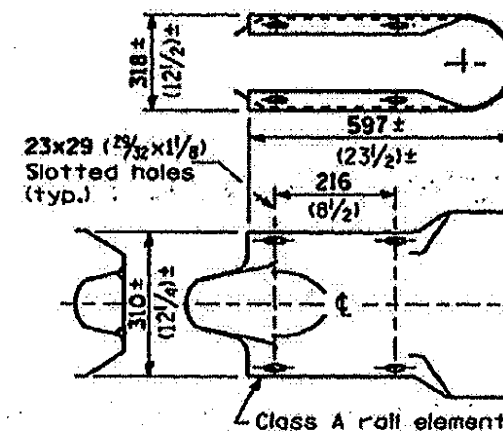
WOOD BREAKAWAY POST



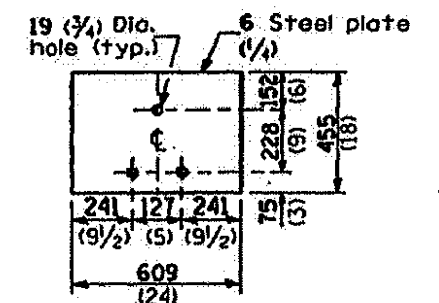
STEEL TUBE



ALTERNATE SOIL PLATE CONNECTION



RETURN END SECTION



SOIL PLATE H

All dimensions are in millimeters (inches) unless otherwise shown.

TRAFFIC BARRIER TERMINAL TYPE 4

(Sheet 2 of 2)

STANDARD 631021-01

\*D5 GUARDRAIL & FENCE REPAIR-2013

Illinois Department of Transportation  
 PASSED October 1, 1998  
*Charles Kullback*  
 ENGINEER OF POLICY AND PROCEDURES  
 APPROVED October 1, 1998  
*Bill Hunter*  
 ENGINEER OF DESIGN AND ENVIRONMENT

FILE NAME =	USER NAME = ceerlockjd	DESIGNED -	REVISED -
ca:\pwork\pwork\ceerlockjd\0331926\0370A19-sht-details.dgn		DRAWN -	REVISED -
PLOT SCALE = 48.0000 / in.		CHECKED -	REVISED -
PLOT DATE = 2/8/2013		DATE = 02/04/13	REVISED -

STATE OF ILLINOIS  
 DEPARTMENT OF TRANSPORTATION

PLAN DETAIL OF TRAFFIC BARRIER TERMINAL TYPE 4

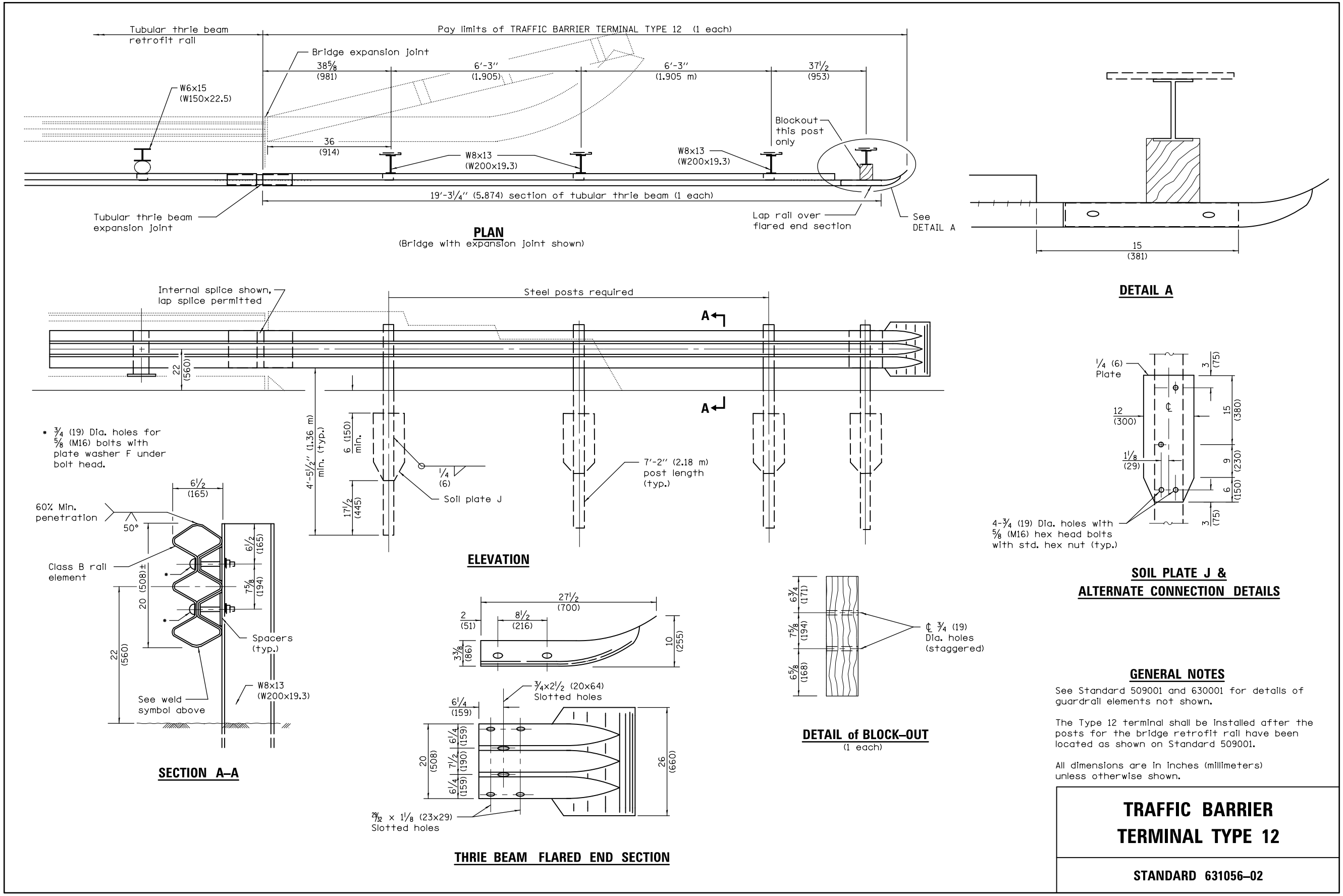
SCALE: SHEET 2 OF 2 SHEETS STA. TO STA.

F.A. RTE.	SECTION	COUNTY	TOTAL SHEETS	SHEET NO.
VAR.	.	VARIOUS	19	16
			CONTRACT NO. 70A19	
ILLINOIS FED. AID PROJECT				









**TRAFFIC BARRIER  
TERMINAL TYPE 12**

**STANDARD 631056-02**

FILE NAME =	USER NAME = ceerlockjd	DESIGNED -	REVISED -	<b>STATE OF ILLINOIS DEPARTMENT OF TRANSPORTATION</b>	<b>DETAIL OF TRAFFIC BARRIER TERMINAL TYPE 12</b>			F.A. RTE.	SECTION	COUNTY	TOTAL SHEETS	SHEET NO.
et:\pw\work\p\midot\ceerlockjd\0331926\0870A19-sht-details.dgn	PLOT SCALE = 40.0000' / in.	DRAWN -	REVISED -					VAR.	.	VARIOUS	19	19
*MODELNAME*	PLOT DATE = 2/8/2013	CHECKED -	REVISED -					CONTRACT NO. 70A19			ILLINOIS FED. AID PROJECT	
		DATE - 02/04/13	REVISED -					SCALE:	SHEET 1	OF 1 SHEETS	STA.	TO STA.

\*D5 GUARDRAIL & FENCE REPAIR-2013