

FAS RTE.	SECTION	COUNTY	TOTAL SHEETS	SHEET NO.
2600	17RS-6, 18RS-12	PIKE	32	1
		ILLINOIS	CONTRACT NO. 72D77	

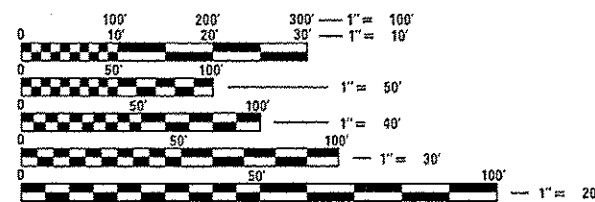
## INDEX OF SHEETS

- 1 COVER SHEET
- 2 GENERAL NOTES
- 3-5 SUMMARY OF QUANTITIES
- 6-10 TYPICAL CROSS SECTIONS
- 11-14 SCHEDULES OF QUANTITIES
- 15-18 ALIGNMENT AND TIES
- 19-26 PLAN SHEETS
- 27-32 PLAN DETAIL SHEETS

## STANDARDS

000001-06	701006-04
001006	701011-03
406201-01	701201-04
482001-02	701301-04
630001-10	701306-03
630301-06	701311-03
631011-09	701901-02
635006-03	780001-03
635011-02	781001-03

ADT 1200 (2011)  
TRUCK 6.67%  
SU 2.50%  
MU 4.17%



FULL SIZE PLANS HAVE BEEN PREPARED USING STANDARD ENGINEERING SCALES. REDUCED SIZED PLANS WILL NOT CONFORM TO STANDARD SCALES. IN MAKING MEASUREMENTS ON REDUCED PLANS, THE ABOVE SCALES MAY BE USED.

J.U.L.I.E.  
JOINT UTILITY LOCATION INFORMATION FOR EXCAVATION  
1-800-892-0123  
OR 811

PROJECT ENGINEER: JEFF MYERS (217) 782-4761  
PROJECT MANAGER: KEITH DONOVAN (217) 557-6349

CONTRACT NO. 72D77

STATE OF ILLINOIS  
DEPARTMENT OF TRANSPORTATION  
DIVISION OF HIGHWAYS

# PROPOSED HIGHWAY PLANS

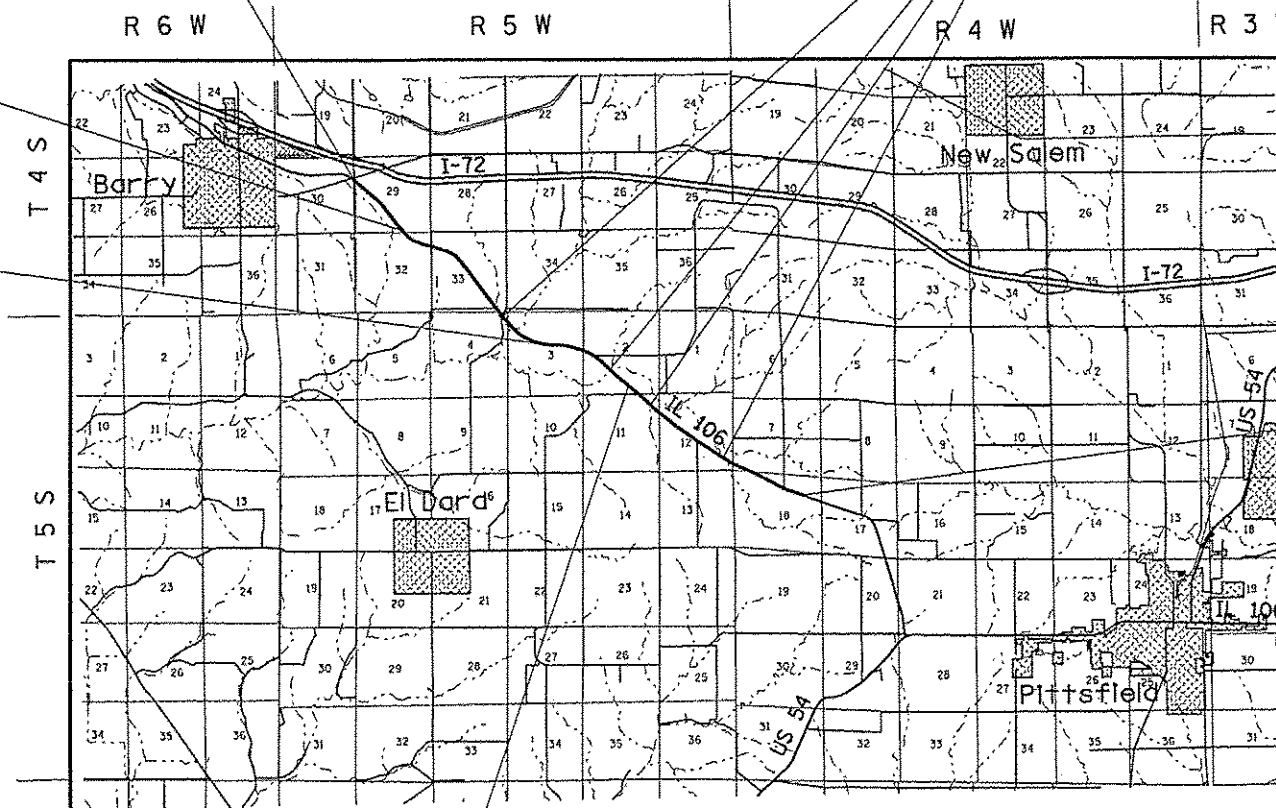
IL ROUTE 106 (FAS 2600)  
SECTION 17 RS-6, 18 RS-12  
PROJECT ACRS-2600(104)

3P RESURFACING  
PIKE COUNTY  
C-96-011-10

### BRIDGE OMISSIONS

- STA 382 + 24.24 - 384 + 04.12
- STA 453 + 05.16 - 453 + 51.28
- STA 489 + 95.07 - 492 + 05.00
- STA 572 + 31.94 - 575 + 21.97

PROJECT ENDS  
STA 731 + 28.89



STATION EQUATION  
STA 474 + 08.35 BK  
STA 474 + 16.92 AH



SCALE (MILES)  
**LOCATION MAP**

GROSS LENGTH = 39,987 FT. = 7.57 MILES

NET LENGTH = 39,261 FT. = 7.44 MILES

D-96-011-10



LOCATION OF SECTION INDICATED THUS: -

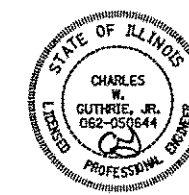
PROJECT BEGINS  
STA 325 + 19.08

STATE OF ILLINOIS  
DEPARTMENT OF TRANSPORTATION  
DIVISION OF HIGHWAYS

SUBMITTED Feb 6 2013  
Raymond D. Driskell  
DEPUTY DIRECTOR OF HIGHWAYS, REGION ENGINEER

March 22 2013  
John D. Baranzello, P.E.  
ENGINEER OF DESIGN AND ENVIRONMENT

March 22 2013  
Omair Asham, P.E.  
DIRECTOR OF HIGHWAYS, CHIEF ENGINEER



BLANK, WESSELINK, COOK & ASSOCIATES  
ENGINEERS - CONSULTANTS  
DECATUR, ILLINOIS

Charles W. Guthrie, Jr.  
CHARLES W. GUTHRIE, JR., P.E.  
DATE February 5 2013  
EXPIRES NOVEMBER 30, 2013

PRINTED BY THE AUTHORITY  
OF THE STATE OF ILLINOIS