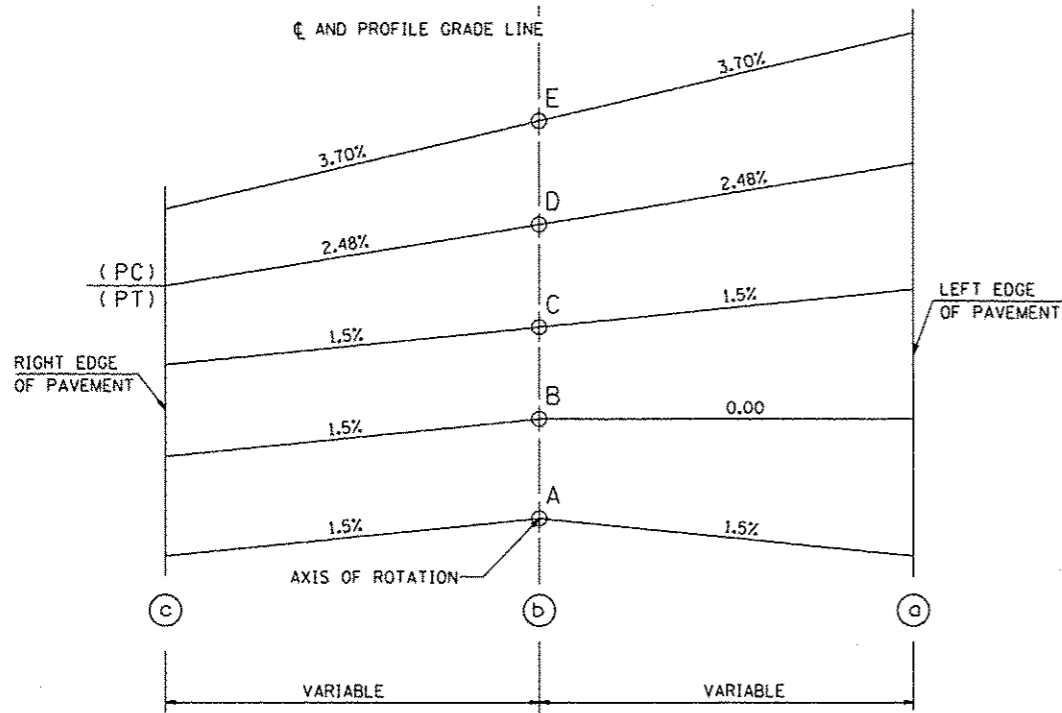


TYPICAL PROFILE - S.E. TRANSITION



(PROP.)

FULL S.E.: (S.E.#2 = 3.7%)
PCC STA. 337+89.13 TO 353+47.90
S.E. TRANSITION:
STA. 353+47.90 TO PT 353+82.07 (BK) =
POT STA. 15+91.53 (AH) TO 16+74.73

(EXIST.)

FULL S.E.: (S.E.#2 = 4.1%)
PCC STA. 337+89.13 TO 353+44.20
S.E. TRANSITION:
STA. 353+44.20 TO PT 353+82.07 (BK) =
POT STA. 15+91.53 (AH) TO 17+08.86

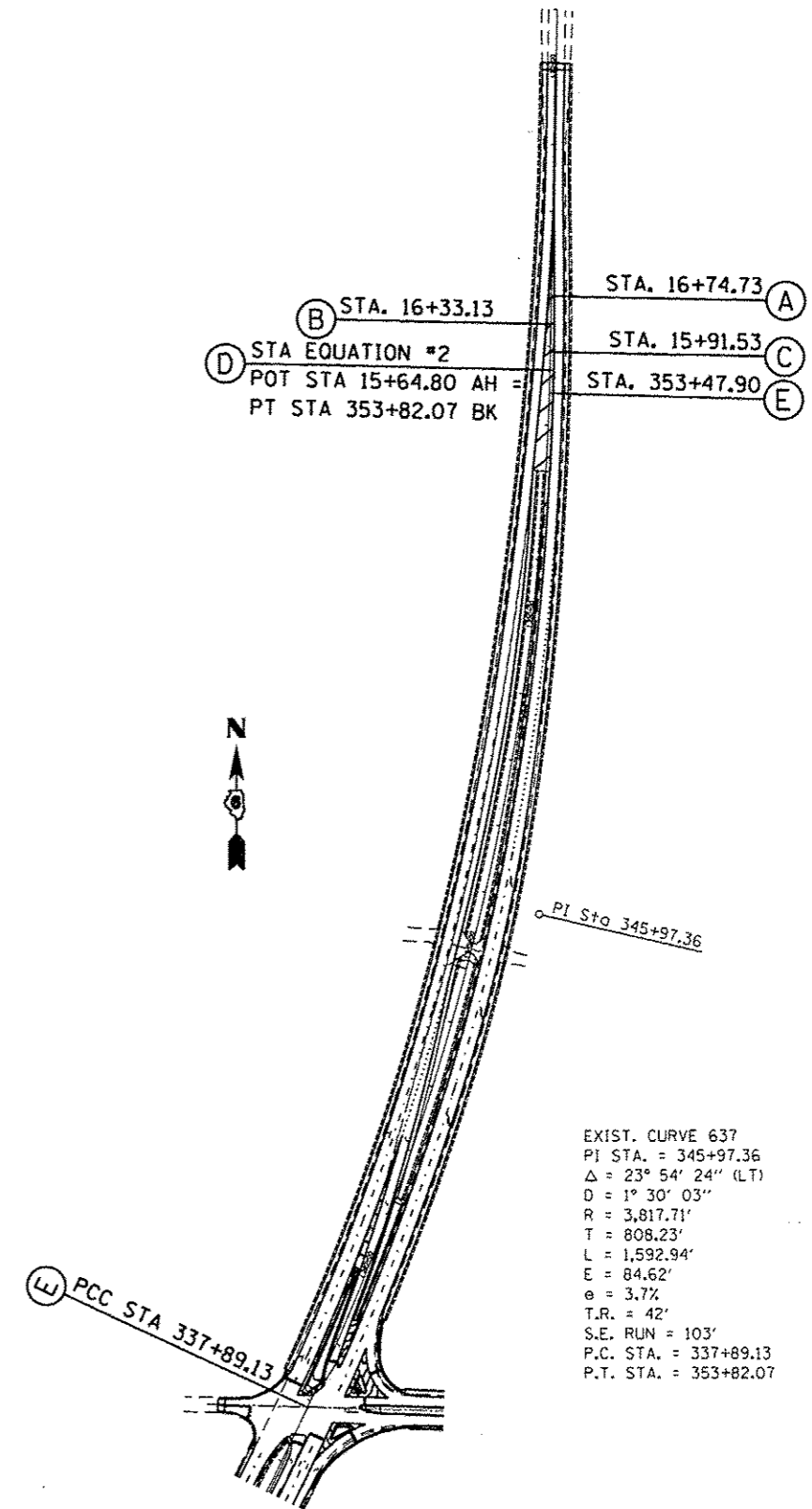


TABLE OF SUPERELEVATION BREAK POINT LOCATIONS S. E. #2

CURVE NO.	e	A	B	C	D	E	TRANSITION
637	3.70%	NONE	NONE	NONE	NONE	337+89.13 (PCC)	Trans. In
637	3.70%	16+74.73	16+33.13	15+91.53	353+82.07 BK = 15+64.80 AH (PT)	353+47.90	Trans. Out

FILE NAME =
c:\p\work\p\dot\sparkag\ld8259630\067

USER NAME = sparkag
PE31-superelevations.dgn

PLOT SCALE = 1/8"=1'-0"
PLOT DATE = Dec-14-2012 03:45:50PM

DESIGNED - RSC
DRAWN - RSC
CHECKED - RSC
DATE -

REVISED -
REVISED -
REVISED -
REVISED -

STATE OF ILLINOIS
DEPARTMENT OF TRANSPORTATION

SUPERELEVATION DETAILS

SCALE: 50 SHEET 2 OF 2 SHEETS STA. 353+47.90 TO STA. 16+74.73

F.A.P. RTE.	SECTION	COUNTY	TOTAL SHEETS	SHEET NO.
	(1)N,TS-2RS-5&(7)RS-3	ADAMS	194	138
CONTRACT NO. 72E31			ILLINOIS FED. AID PROJECT	