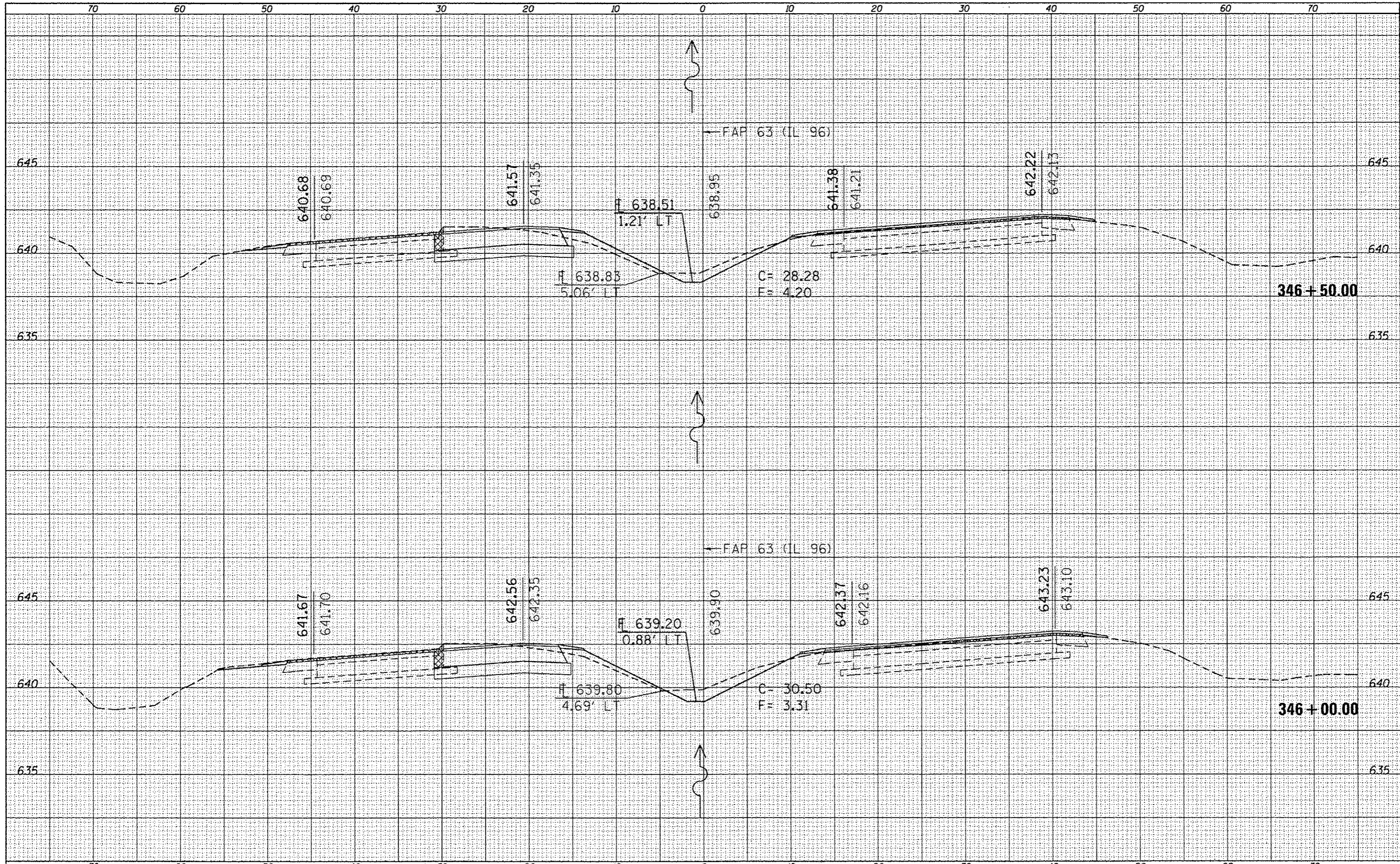


DATE	
BY	
SAVED	
PLOTTED	
TEMPLATE	
ASAS	
ASAS CHECKED	
FINAL SHEET	
NOTE BOOK	
NO.	

DATE	
BY	
SAVED	
PLOTTED	
TEMPLATE	
ASAS	
ASAS CHECKED	
ORIGINAL SHEET	
NOTE BOOK	
NO.	



FILE NAME :	USER NAME :	DESIGNED :	REVISED :	STATE OF ILLINOIS DEPARTMENT OF TRANSPORTATION	CROSS SECTIONS	F.A.P. RTE.	SECTION	COUNTY	TOTAL SHEET SHEETS
Default	al\p\work\p\dat\sparkag\08259630\0672E31-sh	DRAWN :	REVISED :			(1)N,TS-2RS-5&(7)RS-3	ADAMS	194	183
		CHECKED :	REVISED :			CONTRACT NO. 72E31			
		DATE :	REVISED :			ILLINOIS FED. AID PROJECT			
				SCALE:		SHEET 41 OF 52 SHEETS		STA. 346+00.00 TO STA. 346+50.00	

* FAP 63 (US 24); FAP 63 (US 24/IL 96); FAP 506 (IL 96)