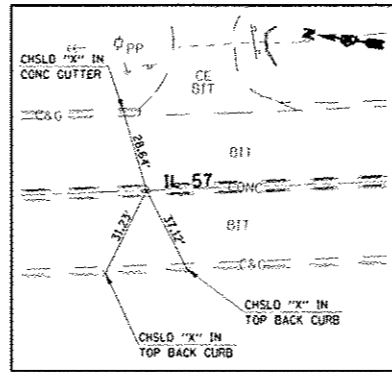


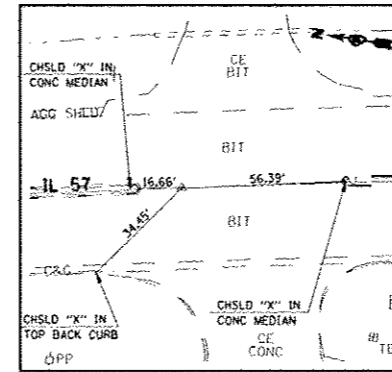
BM #44B: STA. 88+56.00, 50.40' LT
CHISLED "a" ON SOUTH HEADWALL
UNDER ENTRANCE E OF IL 57
ELEV. = 487.22

BM #44: STA. 98+42.50, 3.95' RT
CHISLED "X" TIP OF CONC MEDIAN
465' ± S OF LOCK & DAM ROAD
ELEV. = 495.29

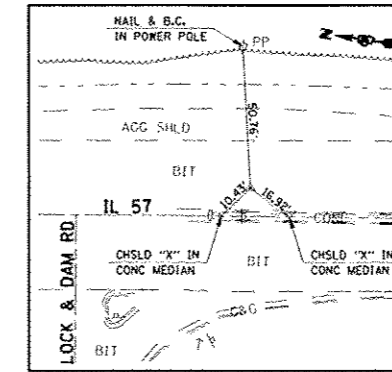
BM #44A: STA. 99+76.60, 34.19' LT
CHISLED "a" ON EAST HEADWALL
ELEV. = 487.22



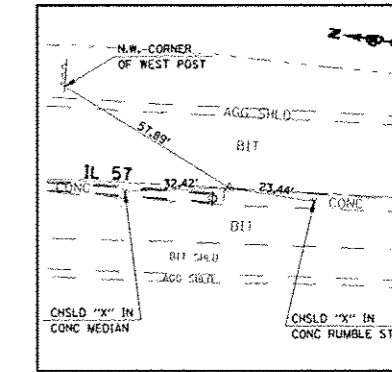
P.T. STA. 88+12.52
(SET STAR DRILLED IN CHSLD "X")



P.C. STA. 90+23.72
(SET P.K. NAIL IN CHSLD "X")

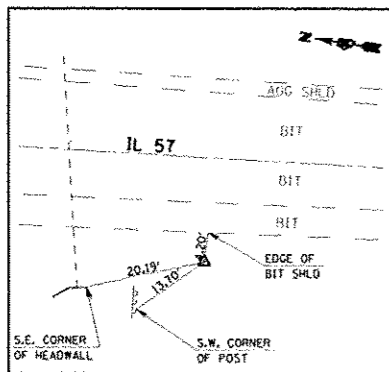


P.I. STA. 94+37.62
(SET P.K. NAIL IN CHSLD "X")

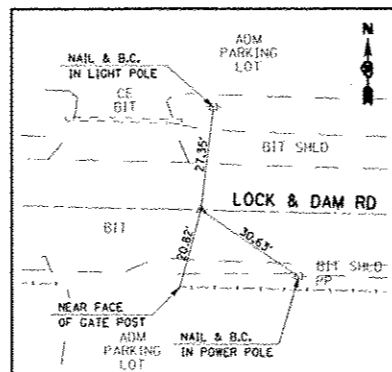


P.T. STA. 98+50.90
(SET P.K. NAIL IN CHSLD "X")

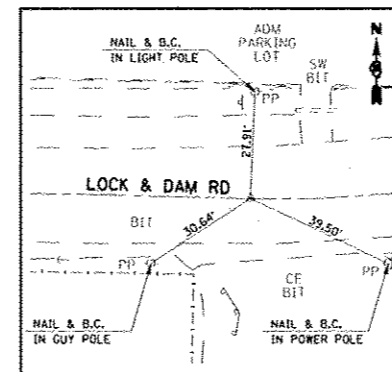
TRAV#100 STA. 91+80.80, 74.24' LT.
(*4 REBAR WITH CAP BURIED 4")
N 1,182,518.379 E 1,948,165.251



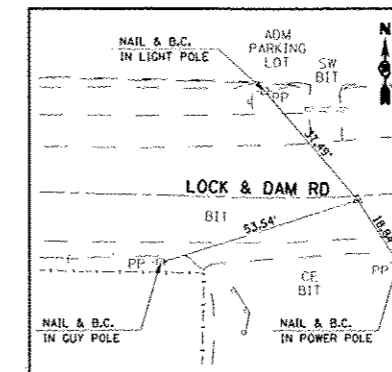
TRAV#101 STA. 100+64.98, 29.11' RT.
(*4 REBAR WITH CAP BURIED 3")
N 1,181,625.804 E 1,948,171.087



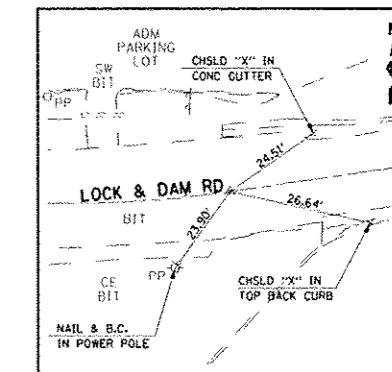
P.O.T. STA. 6+25.57
(SET P.K. NAIL IN CHSLD "X")



P.C. STA. 7+92.52
(SET P.K. NAIL IN CHSLD "X")



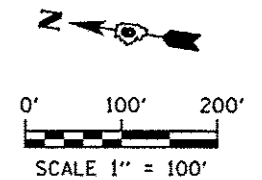
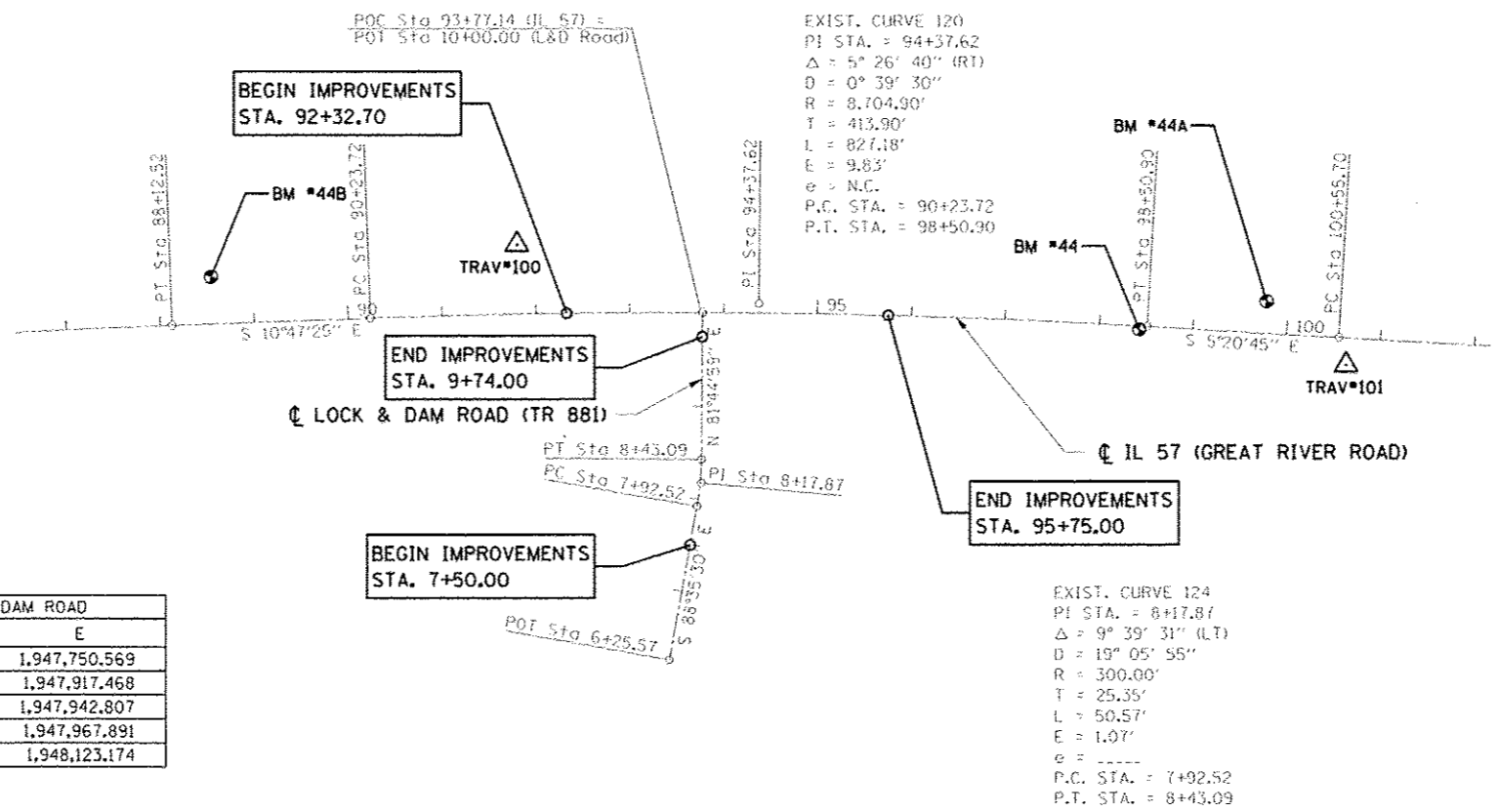
P.I. STA. 8+17.87
(SET P.K. NAIL IN CHSLD "X")



P.T. STA. 8+43.09
(SET P.K. NAIL IN CHSLD "X")

ALIGNMENT COORDINATES - IL 57			
	STATION	N	E
PT	88+12.52	1,183,875.200	1,947,768.201
PC	90+23.72	1,182,660.362	1,948,064.073
POT	93+77.14	1,182,311.941	1,948,123.174
PI	94+37.62	1,182,253.780	1,948,141.561
PT	98+50.90	1,181,841.681	1,948,180.123
PC	100+55.70	1,181,637.771	1,948,199.204

ALIGNMENT COORDINATES - LOCK & DAM ROAD			
	STATION	N	E
POT	6+25.57	1,182,290.514	1,947,750.569
PC	7+92.52	1,182,286.411	1,947,917.468
PI	8+17.87	1,182,285.788	1,947,942.807
PT	8+43.09	1,182,289.425	1,947,967.891
POT	10+00.00	1,182,311.941	1,948,123.174



STATE OF ILLINOIS
DEPARTMENT OF TRANSPORTATION

HORIZONTAL ALIGNMENT AND CONTROL TIES
BENCHMARK DATA

F.A.P. RTE.	SECTION	COUNTY	TOTAL SHEETS	SHEET NO.
502	(53) N-1	ADAMS	20	10

CONTRACT NO. 72F46
FED. ROAD DIST. NO. 6 (ILLINOIS) FED. AID PROJECT

DESIGNED	REVISED
-	-
DRAWN	REVISED
-	-
CHECKED	REVISED
-	-
DATE	REVISED
-	-

SCALE: 1"=100' SHEET NO. 1 OF 1 SHEETS STA. 87+00 TO STA. 102+00