

STATE OF ILLINOIS
DEPARTMENT OF TRANSPORTATION
DIVISION OF HIGHWAYS

**PROPOSED
HIGHWAY PLANS**

FAP ROUTE 502 (IL 57)
SECTION (53) N-1
PROJECT F-0502 (015)
INTERSECTION IMPROVEMENTS
ADAMS COUNTY

C-96-063-12

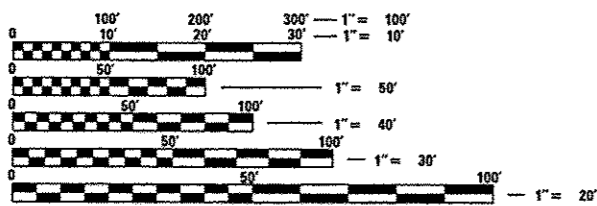
FOR INDEX OF SHEETS, AND HIGHWAY STANDARDS SEE SHEET NO. 2

F.A.P. RTE.	SECTION	COUNTY	TOTAL SHEETS	SHEET NO.
502	(53) N-1	ADAMS	20	1
FED. ROAD DIST. NO. 6		ILLINOIS	CONTRACT NO. 72F46	

D-96-063-12



DESIGN DESIGNATION:
FAP 502
OTHER PRINCIPAL ARTERIAL (URBAN)
ADT = 5100 (2012) 6100 (2032)
%SU = 8
%MU = 12

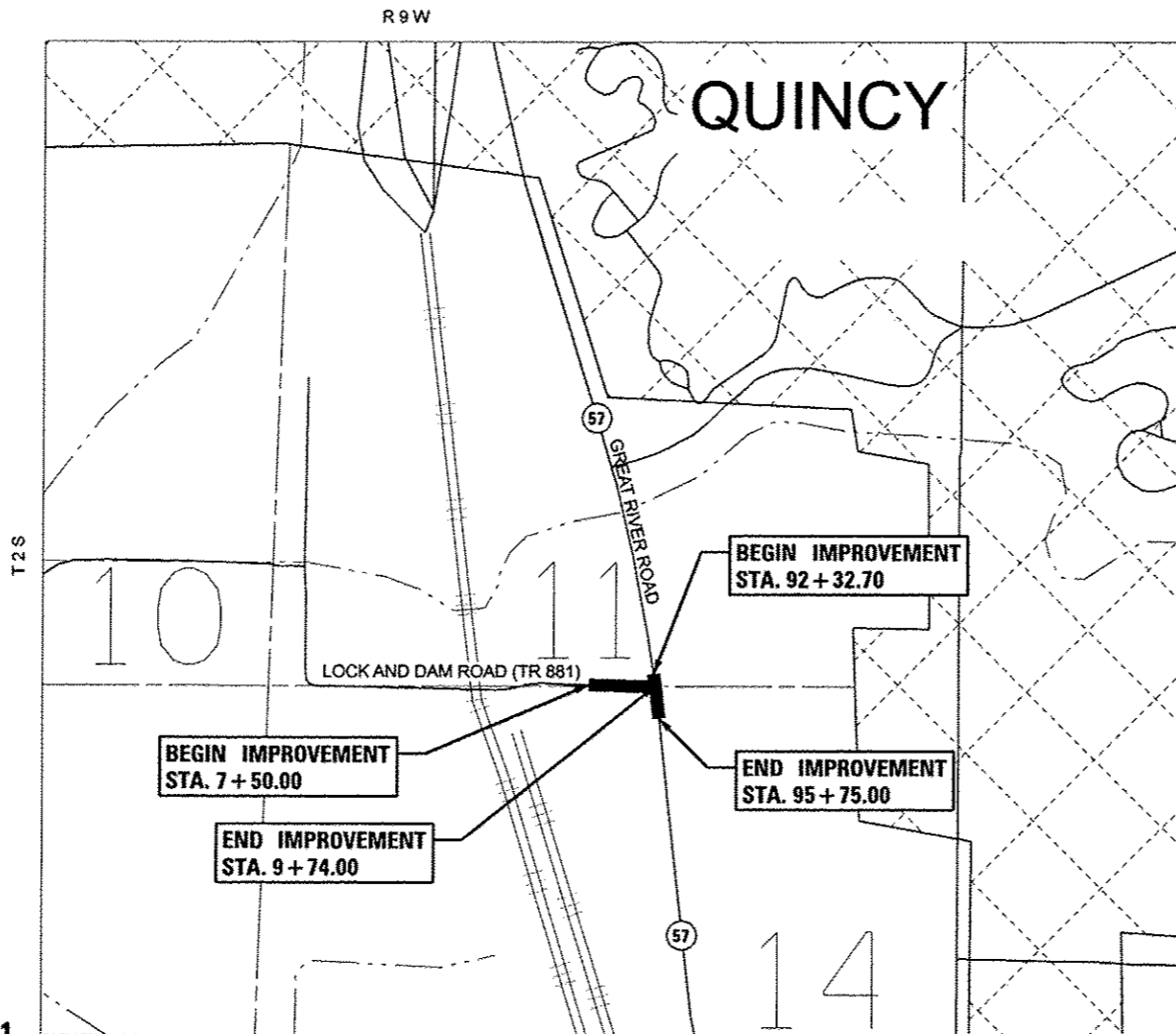


FULL SIZE PLANS HAVE BEEN PREPARED USING STANDARD ENGINEERING SCALES. REDUCED SIZED PLANS WILL NOT CONFORM TO STANDARD SCALES. IN MAKING MEASUREMENTS ON REDUCED PLANS, THE ABOVE SCALES MAY BE USED.

J.U.L.I.E.
JOINT UTILITY LOCATION INFORMATION FOR EXCAVATION
1-800-892-0123
OR 811

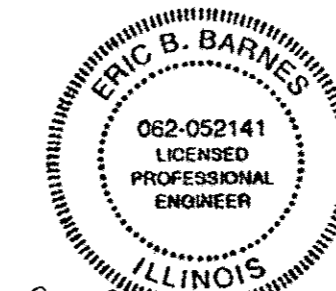
PROJECT ENGINEER: JEFF MYERS (217) 782-4761
PROJECT MANAGER: ED KERN (217) 524-7547

CONTRACT NO. 72F46



LOCATION MAP
SCALE: 1" = 500'

GROSS/NET LENGTH IL 57 SECTION = 342.3 FT = 0.065 MILES
GROSS/NET LENGTH LOCK & DAM ROAD SECTION = 224.00 FT = 0.042 MILES
TOTAL LENGTH = 566.3 FT = 0.107 MILES



Eric B. Barnes 12-12-12
ERIC B. BARNES DATE
REGISTERED PROFESSIONAL ENGINEER
STATE OF ILLINOIS NO. 062-052141
LICENSE EXPIRES NOVEMBER 30, 2013

STATE OF ILLINOIS
DEPARTMENT OF TRANSPORTATION
DIVISION OF HIGHWAYS

SUBMITTED *Dec. 14* 20 *12*
Roger D. Dick
DEPUTY DIRECTOR OF HIGHWAYS, REGION ENGINEER

Feb 1 20 *13*
John D. Baramelli, P.E./br
ENGINEER OF DESIGN AND ENVIRONMENT

Feb 1 20 *13*
Omer Osman, P.E./br
DIRECTOR OF HIGHWAYS, CHIEF ENGINEER

PLANS PREPARED BY:
KLINGNER & ASSOCIATES, P.C.
Engineers • Architects • Surveyors
805 North 24th Street, Quincy, IL 62422-3678 - Fax: (217) 223-8883
1438 Paris Gravel Road, Hannibal, MO 63426-2828 - Fax: (573) 221-8812
158 N. 4th Street, Suite 100, Burlington, IA 52601-3545 - Fax: (319) 752-5405
41 North Prairie Street, Colaburg, IL 62934-1278 - Fax: (618) 342-1278
Internet Address: www.klingner.com
STATE OF ILLINOIS DESIGN FIRM # 1842738

PRINTED BY THE AUTHORITY
OF THE STATE OF ILLINOIS

INDEX OF SHEETS

SHEET NO.	DESCRIPTION
1	COVER SHEET
2	SHEETS INDEX & GENERAL NOTES
3-6	SUMMARY OF QUANTITIES
7-8	SCHEDULE OF QUANTITIES
9	TYPICAL SECTIONS
10	HORIZONTAL ALIGNMENT, CONTROL TIES & BENCHMARK DATA
11-12	PLAN & PROFILES
13	GEOMETRIC DETAIL SHEET
14	MISCELLANEOUS DETAILS
15	CROSS SECTIONS - FAP RTE 502 (IL 57)
16-20	CROSS SECTIONS - LOCK & DAM ROAD

STANDARDS

STANDARD NOS.

000001-06	701101-03
280001-07	701421-05
606001-05	701501-06
606006-02	701901-02
606301-04	780001-03
666001-01	782001

RATES OF APPLICATION TABLE

AGGREGATE (SURFACE, BASE, SUBBASE, OR BACKFILL) STONE DUMPED RIPRAP	2.05 TON / CU YD 1.50 TON / CU YD
HOT-MIX ASPHALT:	
BITUMINOUS MATERIALS (PRIME COAT)	0.00038 TON / SQ YD (on pavement)
BITUMINOUS MATERIALS (PRIME COAT)	0.001425 TON / SQ YD (on aggregate)
AGGREGATE PRIME COAT	0.002 TON / SQ YD
SURFACE / BINDER (112 lbs)	0.056 TON / SQ YD • IN
SEEDING:	
NITROGEN FERTILIZER NUTRIENT	90 LBS / ACRE
PHOSPHORUS FERTILIZER NUTRIENT	90 LBS / ACRE
POTASSIUM FERTILIZER NUTRIENT	90 LBS / ACRE
AGRICULTURAL GROUND LIMESTONE	2.0 TON / ACRE
MULCH METHOD	2.0 TON / ACRE

COMMITMENTS

1. FIELD/RESIDENT ENGINEER SHALL CONTACT STUDIES AND PLANS CONCERNING ANY MAJOR PLAN CHANGE TO MAKE SURE NO PREVIOUS COMMITMENTS (NOT LISTED) WERE MADE AFFECTING THE DESIGN, AND ALLOW AN IMPROVED DESIGN FOR FUTURE PROJECTS.

GENERAL NOTES

1. THE THICKNESS OF BITUMINOUS MIXTURES SHOWN ON THE PLANS IS THE NOMINAL THICKNESS. DEVIATIONS FROM THE NOMINAL THICKNESS WILL BE PERMITTED WHEN SUCH DEVIATIONS OCCUR DUE TO IRREGULARITIES IN THE EXISTING SURFACE OR BASE ON WHICH THE BITUMINOUS MIXTURE IS PLACED.
2. THE CONTRACTOR SHALL PROTECT AND CAREFULLY PRESERVE ALL PROPERTY MARKERS AND MONUMENTS UNTIL THE OWNER, AUTHORIZED AGENT, OR LAND SURVEYOR HAS WITNESSED OR OTHERWISE REFERENCED THEIR LOCATION. WHERE SECTION OR SUB-SECTION MONUMENTS ARE ENCOUNTERED, THE ENGINEER SHALL BE NOTIFIED BEFORE SUCH MONUMENTS ARE REMOVED. THE CONTRACTOR SHALL BE RESPONSIBLE FOR HAVING AN AUTHORIZED SURVEYOR RE-ESTABLISH ANY SECTION OR SUB-SECTION MONUMENTS DESTROYED BY HIS OPERATIONS.
3. ALL DISTURBED AREAS WITHIN THE RIGHT-OF-WAY SHALL BE SEEDED, FERTILIZED, AND MULCHED AS SHOWN IN THE PLANS AND AS DIRECTED BY THE ENGINEER.
4. DO NOT INCLUDE MULCH OR EMULSIFIED ASPHALT ON EROSION CONTROL BLANKET AREAS.
5. THE CONTRACTOR SHALL BE RESPONSIBLE FOR PROTECTING UTILITY PROPERTY FROM CONSTRUCTION OPERATIONS, AS OUTLINED IN ARTICLE 107.31 OF THE STANDARD SPECIFICATIONS. THE J.U.L.L.E. NUMBER IS 1-800-892-0123. A MINIMUM OF 48 HOURS ADVANCE NOTICE IS REQUIRED.
6. THE LOCATION OF BURIED AND ABOVE GROUND UTILITIES SHOWN ARE APPROXIMATE, AND ARE SHOWN FOR CONTRACTOR INFORMATIONAL USE ONLY, AND ARE NOT TO BE REFERENCED FOR CONSTRUCTION PURPOSES. THE IMPLIED PRESENCE OR ABSENCE OF UTILITIES IS NOT TO BE CONSTRUED BY THE OWNER, ENGINEER, CONTRACTOR, OR SUBCONTRACTORS TO BE AN ACCURATE AND COMPLETE REPRESENTATION OF UTILITIES THAT MAY OR MAY NOT EXIST ON THE CONSTRUCTION SITE. BURIED AND ABOVE GROUND UTILITY LOCATIONS, IDENTIFICATION, AND MARKING ARE THE SOLE RESPONSIBILITY OF THE CONTRACTOR. REROUTING, DISCONNECTION, PROTECTION, ETC. OF ANY UTILITIES MUST BE COORDINATED BETWEEN THE CONTRACTOR, UTILITY COMPANY, AND OWNER. SITE SAFETY, INCLUDING THE AVOIDANCE OF HAZARDS ASSOCIATED WITH BURIED AND ABOVE GROUND UTILITIES, REMAINS THE SOLE RESPONSIBILITY OF THE CONTRACTOR.
7. IN ADDITION TO FIELD SURVEYS, PLAN DIMENSIONS AND DETAILS RELATIVE TO THE EXISTING FACILITIES HAVE BEEN TAKEN FROM EXISTING PLANS AND ARE SUBJECT TO CONSTRUCTION VARIATIONS. IT SHALL BE THE CONTRACTOR'S RESPONSIBILITY TO VERIFY SUCH DIMENSIONS AND DETAILS IN THE FIELD. SUCH VARIATIONS SHALL NOT BE A CAUSE FOR ADDITIONAL COMPENSATION DUE TO A CHANGE IN THE SCOPE OF WORK; HOWEVER, THE CONTRACTOR WILL BE PAID FOR THE QUANTITY ACTUALLY FURNISHED AT THE UNIT PRICE BID FOR THE WORK.
8. ANY REFERENCE TO A STANDARD IN THESE PLANS SHALL BE INTERPRETED TO MEAN THE EDITION AS INDICATED BY THE SUB-NUMBER IN THE INDEX OF SHEETS OR THE COPY OF THE STANDARD INCLUDED IN THESE PLANS.
9. ANY EXISTING ROAD SIGNS THAT INTERFERE WITH CONSTRUCTION WILL BE REMOVED OR RELOCATED AS DIRECTED BY THE ENGINEER. AFTER THE CONSTRUCTION IS COMPLETED, THE CONTRACTOR WILL REPLACE THE SIGNS AS DIRECTED BY THE ENGINEER. THIS WORK WILL NOT BE PAID SEPARATELY BUT SHALL BE CONSIDERED INCIDENTAL TO THE CONTRACT AND NO COMPENSATION WILL BE ALLOWED.
10. EXISTING RAISED REFLECTIVE PAVEMENT MARKERS SHALL BE REMOVED PRIOR TO HOT-MIX ASPHALT SURFACE REMOVAL AND/OR RESURFACING.
11. NO PASSING ZONES SHALL BE FIELD VERIFIED BY OPERATIONS, (217) 785-5312, 14 DAYS PRIOR TO FINAL PAVEMENT MARKINGS.
12. ALL SAW CUTS, NECESSARY TO COMPLETE THE WORK DETAILED IN THESE PLANS, SHALL BE INCLUDED IN THE COST FOR THE VARIOUS PAY ITEMS INVOLVED. THE MINIMUM SAW CUT DEPTH IN THE PAVEMENT SHALL BE 2 1/2" UNLESS OTHERWISE SPECIFIED IN A DETAIL SHOWN IN THE PLANS.
13. UNLESS DIRECTED BY THE ENGINEER, PAVEMENT MARKING LINES SHALL NOT BE LAID DIRECTLY OVER A LONGITUDINAL CRACK OR JOINT NOR OVER A TAR OR ASPHALT PAINTED LINE. THE EDGE OF A CENTERLINE OR LANE LINE SHALL BE OFFSET A MINIMUM DISTANCE OF 2" FROM A LONGITUDINAL CRACK OR JOINT. EDGE LINES SHALL BE APPROXIMATELY 2" FROM THE EDGE LINE OF PAVEMENT. SEE SECTION 780 OF THE STANDARD SPECIFICATIONS FOR TRAFFIC CONTROL ITEMS.
14. THE FOLLOWING MIXTURE REQUIREMENTS ARE APPLICABLE FOR THIS PROJECT:

LOCATION(S):	HMA SURF CSE	INCIDENTAL SURF	LEVELING BINDER
MIXTURE USE(S):	PG 64-22	PG 64-22	PG 64-22
AC/PG:	4.0% @ N DESIGN=70	4.0% @ N DESIGN=50	4.0% @ N DESIGN=70
DESIGN AIR VOIDS:	IL 9.5	IL 9.5	IL 9.5
MIXTURE COMPOSITION:	MIX "C"	MIX "C"	N/A
(GRADATION MIXTURE)			
FRICTION AGGREGATE			

GENERAL NOTES

15. SEEDING WILL NOT BE PERMITTED AT ANY TIME WHEN THE GROUND IS FROZEN, WET, OR IN AN UNTILLABLE CONDITION. LOCATIONS TO BE SEEDED SHALL BE DETERMINED BY THE ENGINEER.
16. ACCESS TO ALL SIDEROADS AND ENTRANCES SHALL BE MAINTAINED AT ALL TIMES.

EXAMINED	<i>Nov 30</i>	20	<i>12</i>
<i>John L. J.</i>			
PROJECT IMPLEMENTATION ENGINEER			
EXAMINED	<i>Dec. 4</i>	20	<i>12</i>
<i>JRM/L</i>			
PROGRAM DEVELOPMENT ENGINEER			
DISTRICT SIX			
EXAMINED	<i>Dec 5</i>	20	<i>13</i>
<i>William R. Burr</i>			
OPERATIONS ENGINEER			

FILE NAME	USER NAME	DESIGNED	REVISED	STATE OF ILLINOIS DEPARTMENT OF TRANSPORTATION		SHEET INDEX & GENERAL NOTES		F.A.P. RTE.	SECTION	COUNTY	TOTAL SHEETS	SHEET NO.			
g:\n\p\105\28224\w 3 - 11 07 and 1a road\road sheets\06\2846-shc GenNotes.dgn	shc	DRAWN	REVISED					502	(53) N-1	ADAMS	20	2			
		CHECKED	REVISED					SCALE: none	SHEET NO. 1	OF 1	SHEETS	STA.	TO STA.	CONTRACT NO. 72F46	
		DATE	REVISED					FED. ROAD DIST. NO. 6 ILLINOIS FED. AID PROJECT							

45

CODE NO.	ITEM	UNIT	TOTAL QUANTITY	CONSTRUCTION CODE						
				80% FED 20% STATE ROADWAY 0005 URBAN						
20200100	EARTH EXCAVATION	CU YD	170	170						
28000500	INLET AND PIPE PROTECTION	EACH	1	1						
31101000	SUBBASE GRANULAR MATERIAL, TYPE B	TON	100	100						
35400500	PORTLAND CEMENT CONCRETE BASE COURSE WIDENING 10"	SO YD	231	231						
40600200	BITUMINOUS MATERIALS (PRIME COAT)	TON	0.9	0.9						
40600300	AGGREGATE (PRIME COAT)	TON	6	6						
40600635	LEVELING BINDER (MACHINE METHOD), N70	TON	62	62						
40600990	TEMPORARY RAMP	SO YD	264	264						
40603315	HOT-MIX ASPHALT SURFACE COURSE, MIX "C", N70	TON	93	93						
40800050	INCIDENTAL HOT-MIX ASPHALT SURFACING	TON	8	8						
42001300	PROTECTIVE COAT	SO YD	324	324						
42300600	PORTLAND CEMENT CONCRETE DRIVEWAY PAVEMENT, 10 INCH	SO YD	140	140						
44000100	PAVEMENT REMOVAL	SO YD	11	11						
44000200	DRIVEWAY PAVEMENT REMOVAL	SO YD	135	135						

CODE NO.	ITEM	UNIT	TOTAL QUANTITY	CONSTRUCTION CODE					
				80% FED 20% STATE ROADWAY 0005 URBAN					
44000300	CURB REMOVAL	FOOT	45	45					
44000500	COMBINATION CURB AND GUTTER REMOVAL	FOOT	465	465					
44003100	MEDIAN REMOVAL	SQ FT	203	203					
60600095	CLASS SI CONCRETE (OUTLET)	CU YD	2.5	2.5					
60600605	CONCRETE CURB, TYPE B	FOOT	74	74					
60605000	COMBINATION CONCRETE CURB AND GUTTER, TYPE B-6.24	FOOT	384	384					
60605500	COMBINATION CONCRETE CURB AND GUTTER, TYPE B-6.24 (^A WIDTH GUTTER FLAG) <i>VARIABLE</i>	FOOT	10	10					
60608600	COMBINATION CONCRETE CURB AND GUTTER, TYPE M-6.06	FOOT	11	11					
60609200	COMBINATION CONCRETE CURB AND GUTTER, TYPE M-6.12	FOOT	28	28					
60618300	CONCRETE MEDIAN SURFACE, 4 INCH	SQ FT	63	63					
66600105	FURNISHING AND ERECTING RIGHT OF WAY MARKERS	EACH	2	2					
67000400	ENGINEER'S FIELD OFFICE, TYPE A	CAL MO	6	6					
67100100	MOBILIZATION	L SUM	1	1					
70100310	TRAFFIC CONTROL AND PROTECTION, STANDARD 701421	L SUM	1	1					

CODE NO.	ITEM	UNIT	TOTAL QUANTITY	CONSTRUCTION CODE						
				80% FED 20% STATE ROADWAY 0005 URBAN						
70102620	TRAFFIC CONTROL AND PROTECTION, STANDARD 701501	L SUM	1	1						
70103815	TRAFFIC CONTROL SURVEILLANCE	CAL DA	10	10						
70106800	CHANGEABLE MESSAGE SIGN	CAL MO	6	6						
70300100	SHORT TERM PAVEMENT MARKING	FOOT	72	72						
70300230	TEMPORARY PAVEMENT MARKING - LINE 5"	FOOT	1174	1174						
70300250	TEMPORARY PAVEMENT MARKING - LINE 8"	FOOT	105	105						
70300260	TEMPORARY PAVEMENT MARKING - LINE 12"	FOOT	51	51						
70300280	TEMPORARY PAVEMENT MARKING - LINE 24"	FOOT	30	30						
70301000	WORK ZONE PAVEMENT MARKING REMOVAL	SQ FT	695	695						
* 78004280	PREFORMED PLASTIC PAVEMENT MARKING, TYPE B - INLAID - LINE 24"	FOOT	30	30						
* 78009005	MODIFIED URETHANE PAVEMENT MARKING - LINE 5"	FOOT	1174	1174						
* 78009008	MODIFIED URETHANE PAVEMENT MARKING - LINE 8"	FOOT	105	105						
* 78009012	MODIFIED URETHANE PAVEMENT MARKING - LINE 12"	FOOT	51	51						
* 78200300	PRISMATIC CURB REFLECTOR	EACH	12	12						

* SPECIALTY ITEM

CONSTRUCTION CODE

CODE NO.	ITEM	UNIT	TOTAL QUANTITY	80% FED	20% STATE				
				ROADWAY	URBAN				
X4401198	HOT-MIX ASPHALT SURFACE REMOVAL, VARIABLE DEPTH	SQ YD	933	933					
X4403800	MEDIAN SURFACE REMOVAL	SQ FT	72	72					
X6065701	CONCRETE MEDIAN, TYPE SM-4,06	SQ FT	126	126					

FILE NAME: D:\2012\11-19\100224-WB 2 - IL 57 and I.D. Road\FILES\Bids\72F46-211-Quantity.dgn
 USER NAME: xmb
 DESIGNED:
 DRAWN:
 CHECKED:
 DATE:
 PLOT SCALE: 1/8"=1'-0"
 PLOT DATE: 12/12/12

DESIGNED:
 DRAWN:
 CHECKED:
 DATE:

REVISED:
 REVISED:
 REVISED:
 REVISED:

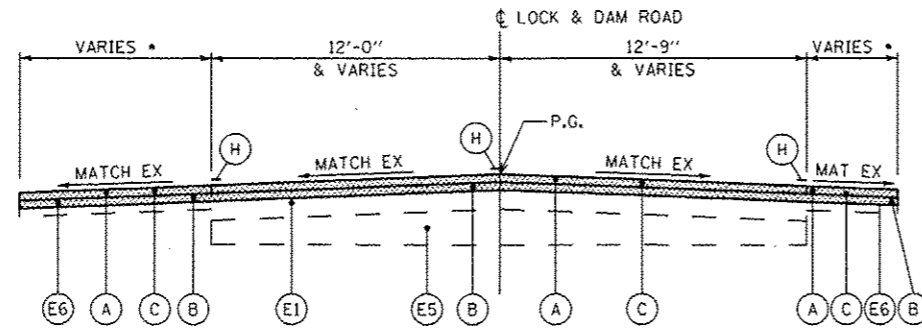
STATE OF ILLINOIS
 DEPARTMENT OF TRANSPORTATION

SUMMARY OF QUANTITIES

SCALE: none

SHEET NO. 4 OF 4 SHEETS STA. TO STA.

F.A.P. RTE. 502 SECTION (53) N-1 COUNTY ADAMS TOTAL SHEETS 20 SHEET NO. 6 CONTRACT NO. 72F46
 ILLINOIS FED. AID PROJECT



TYPICAL LOCK & DAM ROAD SECTION

NOTES:
 * - SEE PLAN SHEETS

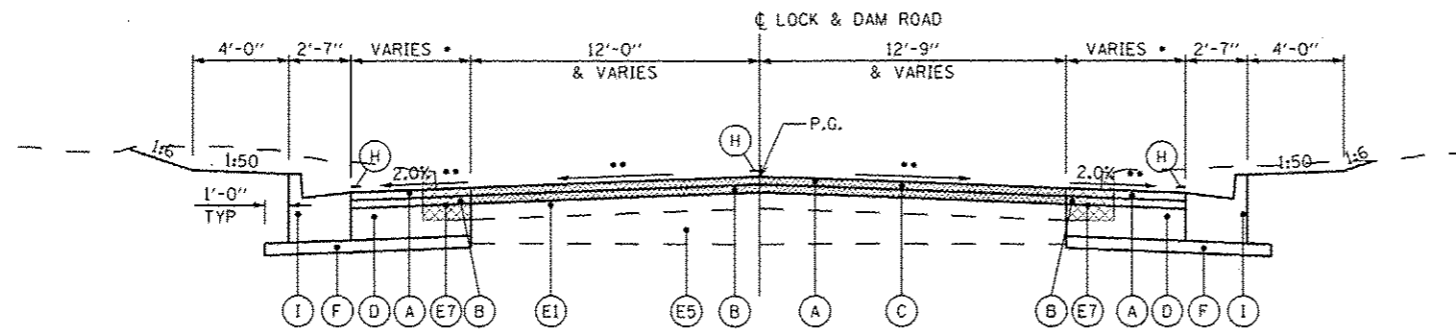
STA 7+50.00 TO STA 8+40.00 LT
 STA 7+50.00 TO STA 8+64.00 RT

EXISTING LEGEND

- (E1) EXISTING HMA PAVEMENT
- (E2) EXISTING PCC PAVEMENT, 8"
- (E3) EXISTING HMA BSE CSE, 9"
- (E4) EXISTING HMA SURFACING, 3 1/2"
- (E5) EXISTING SUB-BASE GRANULAR MATERIAL
- (E6) EXISTING HMA SHOULDER 6" / EXISTING ENTRANCE PAVEMENT
- (E7) EXISTING CONCRETE CURB & GUTTER, TYPE B-6.24
- (E8) EXISTING SOLID CONCRETE MEDIAN
- EXISTING ITEM TO BE REMOVED

PROPOSED LEGEND

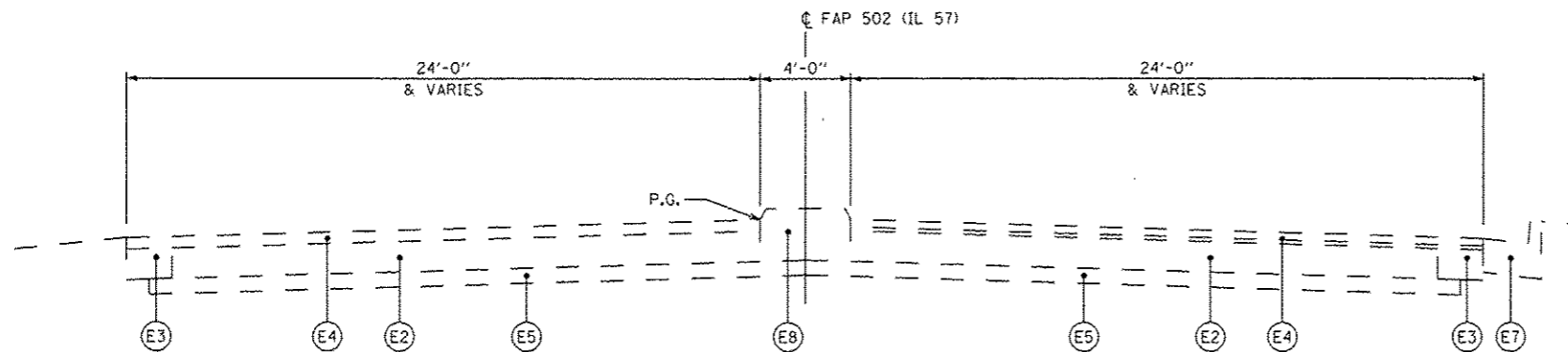
- (A) PR HMA SURFACE COURSE, 1 1/2"
- (B) PR HMA LEVELING BINDER, 1"
- (C) PR HMA SURFACE REMOVAL, 2 1/2" (PAID AS VARIABLE DEPTH)
- (D) PR PCC BASE COURSE WIDENING, 10"
- (F) PR SUBBASE GRANULAR MATERIAL, TYPE B, 4"
- (H) PR PAVEMENT MARKING (SEE PLAN SHEETS)
- (I) PR COMBINATION CONCRETE CURB & GUTTER, TYPE B-6.24



TYPICAL LOCK & DAM ROAD SECTION

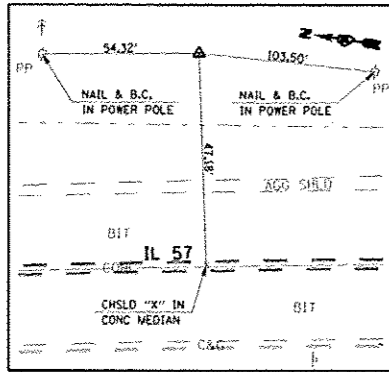
NOTES:
 * - SEE PLAN SHEETS
 ** - VARIES (SEE GEOMETRIC DETAIL SHEET AND CROSS SECTION SHEETS)

STA 8+40.00 TO STA 9+74.00 LT
 STA 8+64.00 TO STA 9+74.00 RT



TYPICAL FAP 502 (IL 57) SECTION

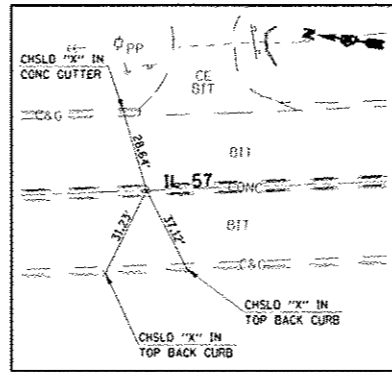
FILE NAME: g:\08files\080224\vo 3 - il 57 and ld road\add sheets\0672F46-shr-1\typical.dgn USER NAME: eub PLOT SCALE: 1/8" = 1'-0" PLOT DATE: 12/12/2012	DESIGNED: _____ DRAWN: _____ CHECKED: _____ DATE: _____	REVISED: _____ REVISED: _____ REVISED: _____ REVISED: _____	STATE OF ILLINOIS DEPARTMENT OF TRANSPORTATION	TYPICAL SECTIONS		F.A.P. RTE. 502	SECTION (53) N-1	COUNTY ADAMS	TOTAL SHEETS 20	SHEET NO. 9
	SCALE: none SHEET NO. 1 OF 1 SHEETS STA. TO STA.			CONTRACT NO. 72F46		FED. ROAD DIST. NO. 6 ILLINOIS FED. AID PROJECT				



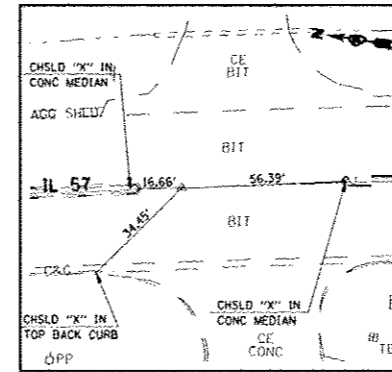
BM #44B: STA. 88+56.00, 50.40' LT
CHISLED "a" ON SOUTH HEADWALL
UNDER ENTRANCE E OF IL 57
ELEV. = 487.22

BM #44: STA. 98+42.50, 3.95' RT
CHISLED "X" TIP OF CONC MEDIAN
465' ± S OF LOCK & DAM ROAD
ELEV. = 495.29

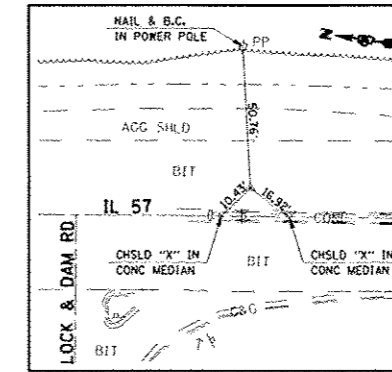
BM #44A: STA. 99+76.60, 34.19' LT
CHISLED "a" ON EAST HEADWALL
ELEV. = 487.22



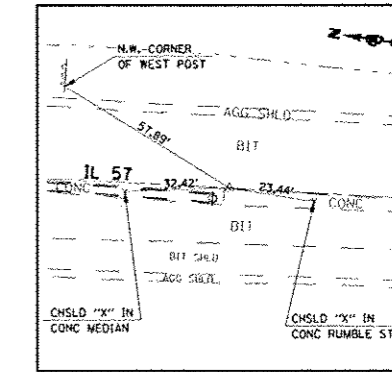
P.T. STA. 88+12.52
(SET STAR DRILLED IN CHSLD "X")



P.C. STA. 90+23.72
(SET P.K. NAIL IN CHSLD "X")

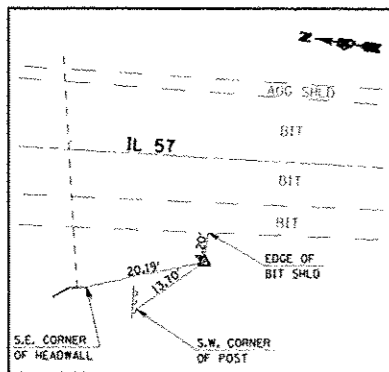


P.I. STA. 94+37.62
(SET P.K. NAIL IN CHSLD "X")

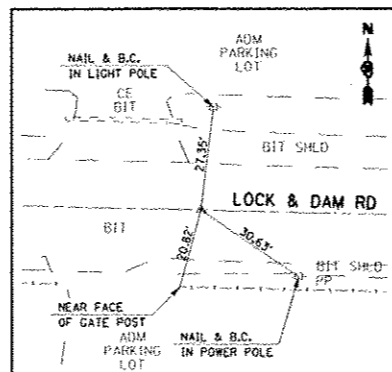


P.T. STA. 98+50.90
(SET P.K. NAIL IN CHSLD "X")

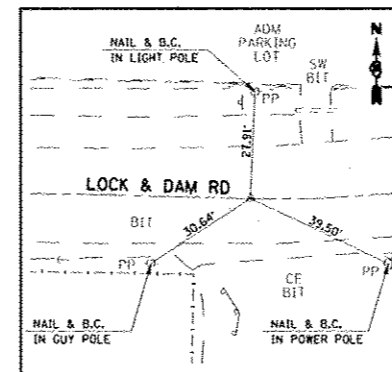
TRAV#100 STA. 91+80.80, 74.24' LT.
(*4 REBAR WITH CAP BURIED 4")
N 1,182,518.379 E 1,948,165.251



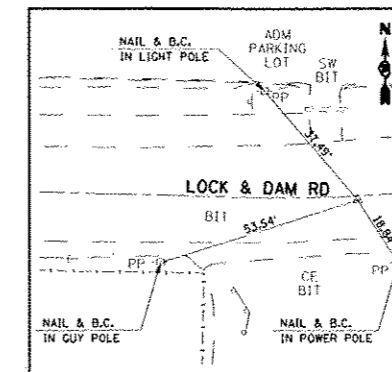
TRAV#101 STA. 100+64.98, 29.11' RT.
(*4 REBAR WITH CAP BURIED 3")
N 1,181,625.804 E 1,948,171.087



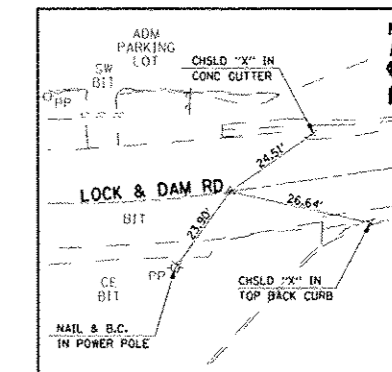
P.O.T. STA. 6+25.57
(SET P.K. NAIL IN CHSLD "X")



P.C. STA. 7+92.52
(SET P.K. NAIL IN CHSLD "X")



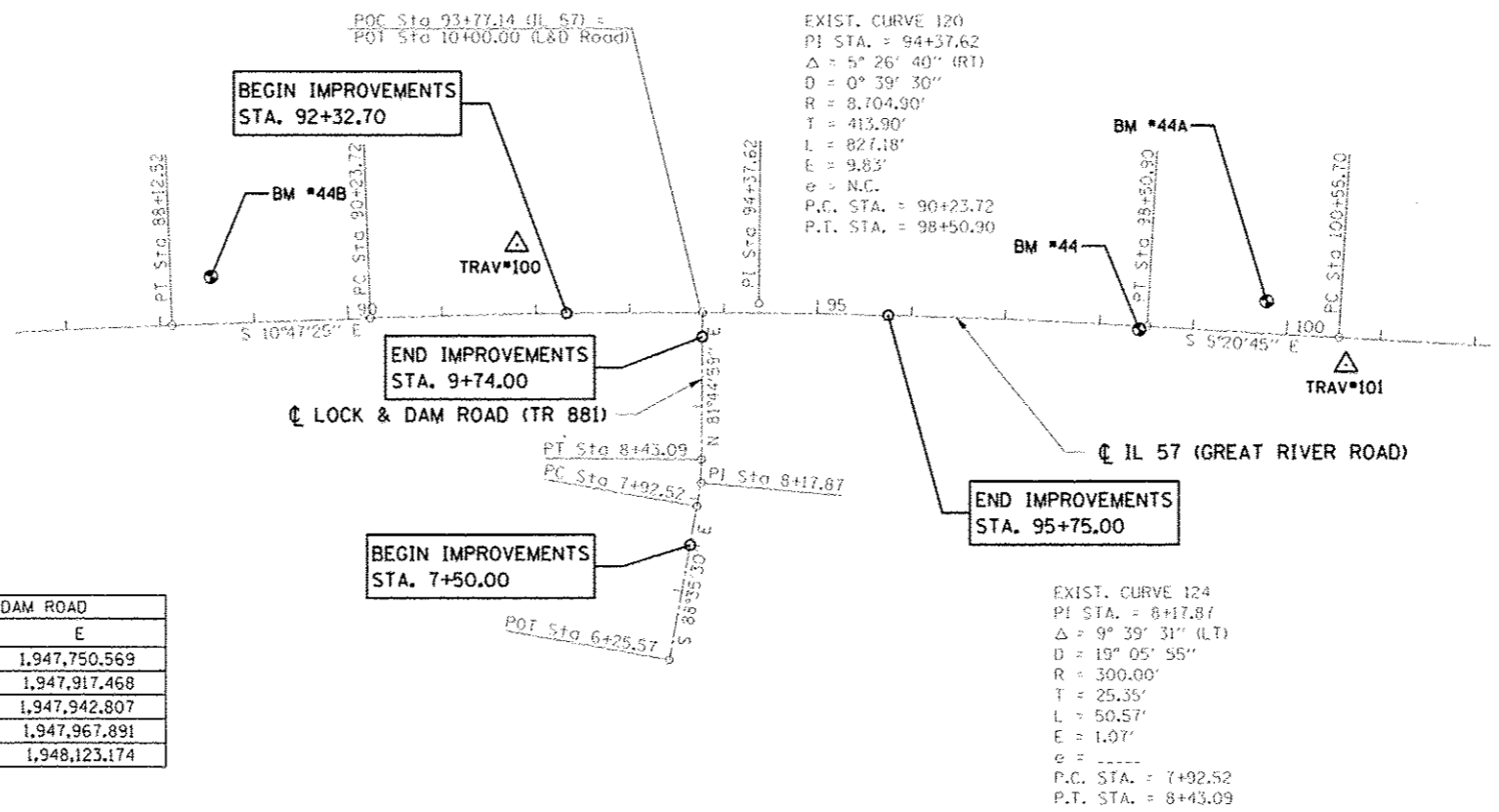
P.I. STA. 8+17.87
(SET P.K. NAIL IN CHSLD "X")



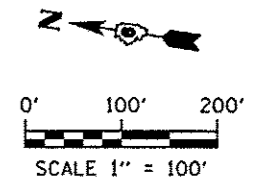
P.T. STA. 8+43.09
(SET P.K. NAIL IN CHSLD "X")

ALIGNMENT COORDINATES - IL 57			
	STATION	N	E
PT	88+12.52	1,183,875.200	1,947,768.201
PC	90+23.72	1,182,660.362	1,948,064.073
POT	93+77.14	1,182,311.941	1,948,123.174
PI	94+37.62	1,182,253.780	1,948,141.561
PT	98+50.90	1,181,841.681	1,948,180.123
PC	100+55.70	1,181,637.771	1,948,199.204

ALIGNMENT COORDINATES - LOCK & DAM ROAD			
	STATION	N	E
POT	6+25.57	1,182,290.514	1,947,750.569
PC	7+92.52	1,182,286.411	1,947,917.468
PI	8+17.87	1,182,285.788	1,947,942.807
PT	8+43.09	1,182,289.425	1,947,967.891
POT	10+00.00	1,182,311.941	1,948,123.174



EXIST. CURVE 124
PI STA. = 8+17.87
Δ = 9° 39' 31" (LT)
D = 19° 05' 55"
R = 300.00'
T = 25.35'
L = 50.57'
E = 1.07'
e = ----
P.C. STA. = 7+92.52
P.T. STA. = 8+43.09



STATE OF ILLINOIS
DEPARTMENT OF TRANSPORTATION

HORIZONTAL ALIGNMENT AND CONTROL TIES
BENCHMARK DATA

F.A.P. RTE.	SECTION	COUNTY	TOTAL SHEETS	SHEET NO.
502	(53) N-1	ADAMS	20	10
CONTRACT NO. 72F46				
FED. ROAD DIST. NO. 6 (ILLINOIS) FED. AID PROJECT				

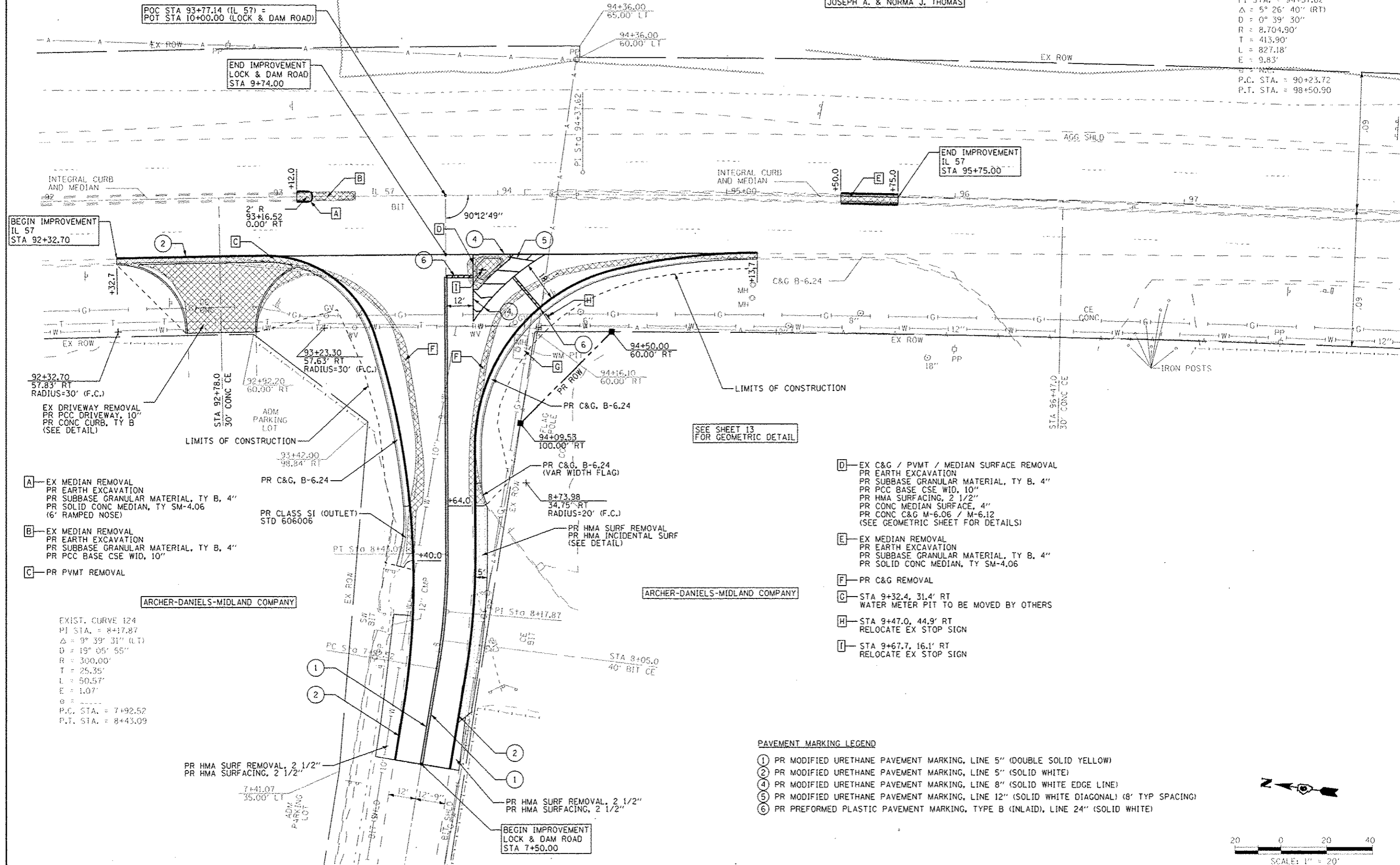
FILE NAME	USER NAME	DESIGNED	REVISED
ad\0811es\080224\ho 3 - il 57 and l&d road\add sheets\0670F46\sh1-align.dgn	ebb	-	-
PLOT SCALE	CHECKED	REVISED	REVISED
1" = 200.0000' / 1 IN.	-	-	-
PLOT DATE	DATE	REVISED	REVISED
12/12/2012	-	-	-

SCALE: 1"=100' SHEET NO. 1 OF 1 SHEETS STA. 87+00 TO STA. 102+00

GARDNER DENVER MACHINERY, INC.

JOSEPH A. & NORMA J. THOMAS

EXIST. CURVE 120
 PI STA. = 94+37.62
 $\Delta = 5^\circ 26' 40''$ (RT)
 $D = 0^\circ 39' 30''$
 $R = 8,704.90'$
 $T = 413.90'$
 $L = 827.18'$
 $E = 9.83'$
 $B = N.C.$
 P.C. STA. = 90+23.72
 P.T. STA. = 98+50.90



- A - EX MEDIAN REMOVAL
PR EARTH EXCAVATION
PR SUBBASE GRANULAR MATERIAL, TY B, 4"
PR SOLID CONC MEDIAN, TY SM-4.06
(6' RAMPED NOSE)
- B - EX MEDIAN REMOVAL
PR EARTH EXCAVATION
PR SUBBASE GRANULAR MATERIAL, TY B, 4"
PR PCC BASE CSE WID, 10"
- C - PR PVMT REMOVAL

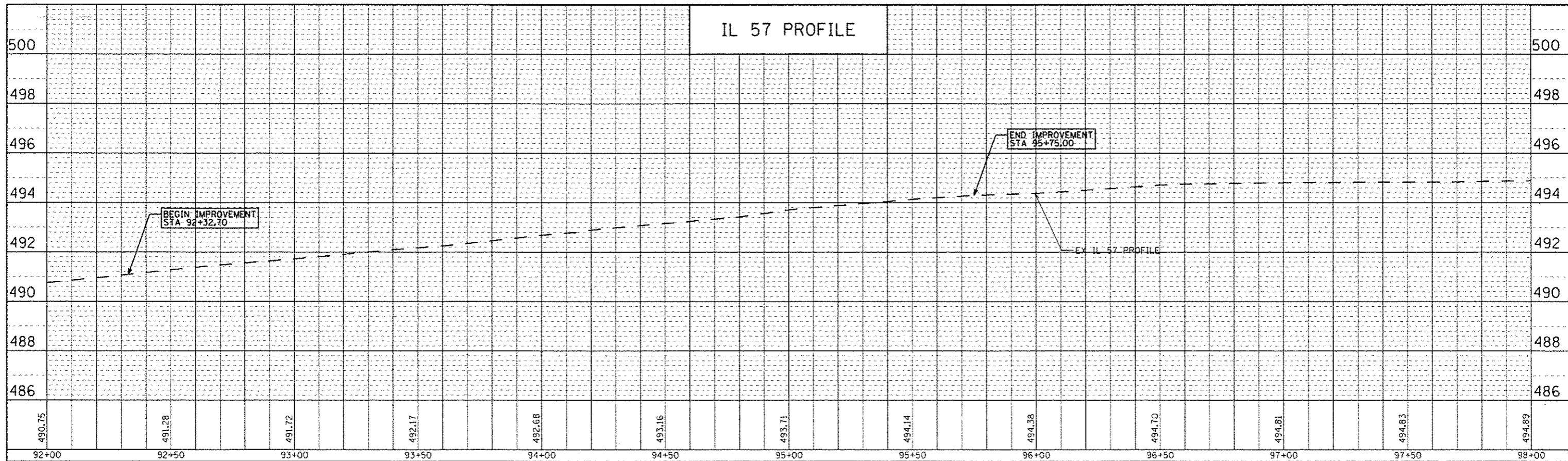
- D - EX C&G / PVMT / MEDIAN SURFACE REMOVAL
PR EARTH EXCAVATION
PR SUBBASE GRANULAR MATERIAL, TY B, 4"
PR PCC BASE CSE WID, 10"
PR HMA SURFACING, 2 1/2"
PR CONC MEDIAN SURFACE, 4"
PR CONC C&G M-6.06 / M-6.12
(SEE GEOMETRIC SHEET FOR DETAILS)
- E - EX MEDIAN REMOVAL
PR EARTH EXCAVATION
PR SUBBASE GRANULAR MATERIAL, TY B, 4"
PR SOLID CONC MEDIAN, TY SM-4.06
- F - PR C&G REMOVAL
- G - STA 9+32.4, 31.4' RT
WATER METER PIT TO BE MOVED BY OTHERS
- H - STA 9+47.0, 44.9' RT
RELOCATE EX STOP SIGN
- I - STA 9+67.7, 16.1' RT
RELOCATE EX STOP SIGN

- PAVEMENT MARKING LEGEND**
- ① PR MODIFIED URETHANE PAVEMENT MARKING, LINE 5" (DOUBLE SOLID YELLOW)
 - ② PR MODIFIED URETHANE PAVEMENT MARKING, LINE 5" (SOLID WHITE)
 - ④ PR MODIFIED URETHANE PAVEMENT MARKING, LINE 8" (SOLID WHITE EDGE LINE)
 - ⑤ PR MODIFIED URETHANE PAVEMENT MARKING, LINE 12" (SOLID WHITE DIAGONAL) (8' TYP SPACING)
 - ⑥ PR PREFORMED PLASTIC PAVEMENT MARKING, TYPE B (INLAID), LINE 24" (SOLID WHITE)

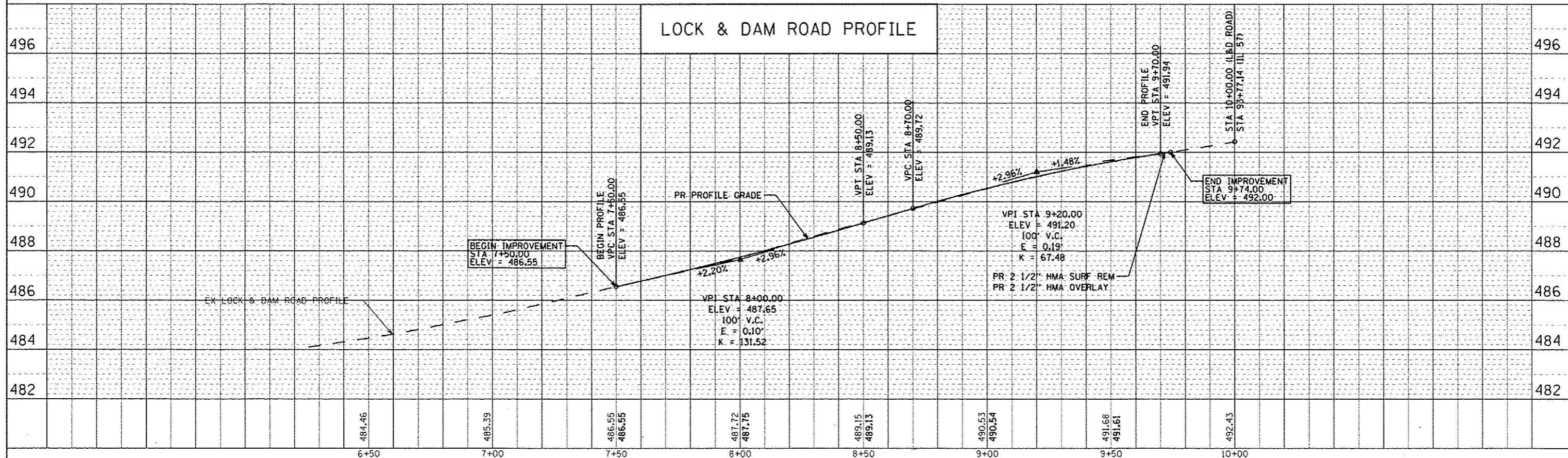
EXIST. CURVE 124
 PI STA. = 8+17.87
 $\Delta = 9^\circ 39' 31''$ (L.T.)
 $D = 19^\circ 05' 55''$
 $R = 300.00'$
 $T = 25.35'$
 $L = 50.57'$
 $E = 1.07'$
 $B = N.C.$
 P.C. STA. = 7+92.52
 P.T. STA. = 8+43.09

FILE NAME -	USER NAME -	DESIGNED -	REVISED -	STATE OF ILLINOIS DEPARTMENT OF TRANSPORTATION	PLAN SHEET	F.A.P. RTE.	SECTION	COUNTY	TOTAL SHEETS	SHEET NO.	
GNV\B\105\080224\NO 3 - IL 57 and LD Road\CADD Sheets\080224-16-sh1-Plan02.dwg	add	DRAWN -	REVISED -			502	(53) N-1	ADAMS	20	11	
		CHECKED -	REVISED -			CONTRACT NO. 72F 46					
		DATE	REVISED			FED. ROAD DIST. NO. 6 ILLINOIS FED. AID PROJECT					

PLAN	DATE
PROJECT	BY
NOTED	
NOTE BOOK	
NO.	
NO.	
NO.	

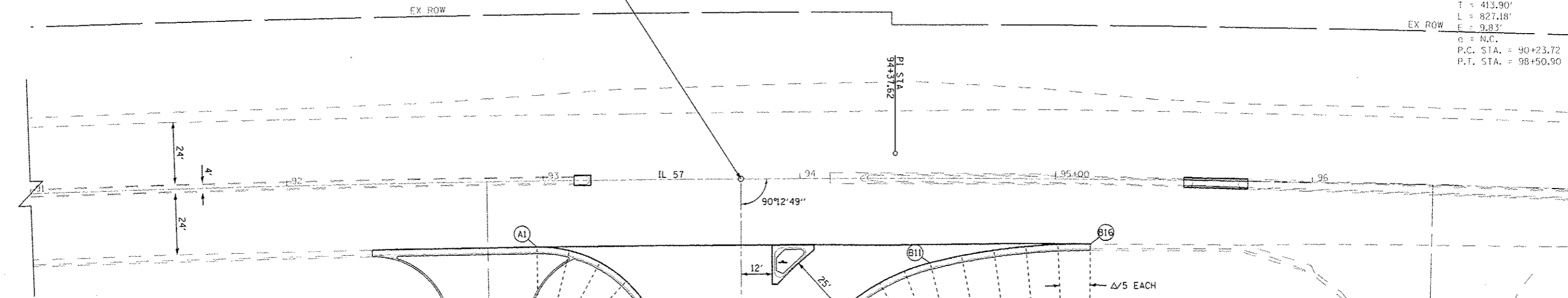


PROFILE	DATE
PROJECT	BY
NOTED	
NOTE BOOK	
NO.	
NO.	
NO.	



EXIST. CURVE 120
 P.I. STA. = 94+37.62
 $\Delta = 5^{\circ} 26' 40''$ (RT)
 $D = 0^{\circ} 39' 30''$
 $R = 8,704.90'$
 $T = 413.90'$
 $L = 827.18'$
 $E = 9.83'$
 $e = N.C.$
 P.C. STA. = 90+23.72
 P.T. STA. = 98+50.90

POC STA 93+77.14 (IL 57) =
 POT STA 10+00.00 (LOCK & DAM ROAD)



LOCK & DAM ROAD C & EOP ELEVATIONS

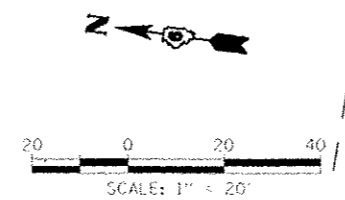
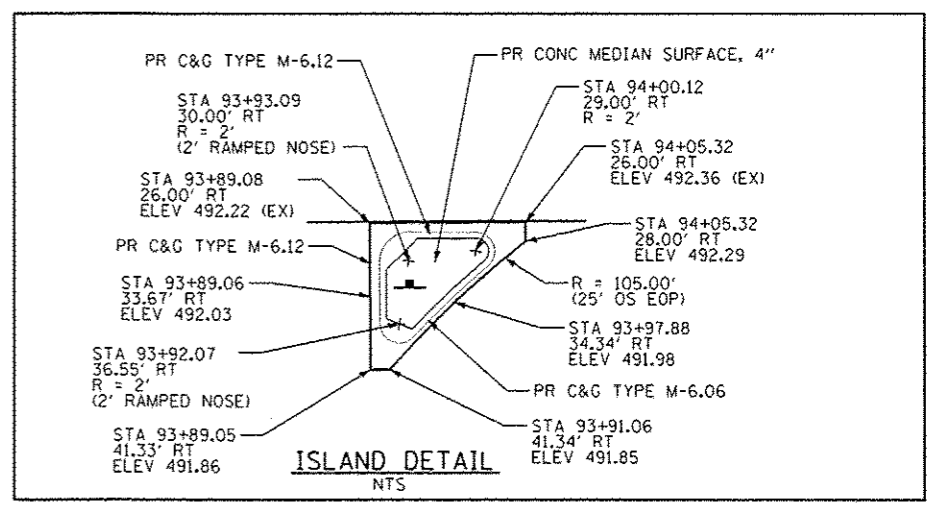
STATION	ELEVATION	OFFSET	ELEVATION
7+70.89	487.03	12.00' LT	486.85
7+75.00	487.12	12.00' LT	486.92
8+00.00	487.75	12.00' LT	487.52
8+25.00	488.41	12.00' LT	488.18
8+50.00	489.13	12.00' LT	488.95
8+75.00	489.87	12.00' LT	489.69
9+00.00	490.54	12.00' LT	490.36
9+25.00	491.12	12.00' LT	490.94
9+50.00	491.61	12.00' LT	491.43
9+74.00	492.00	12.00' LT	491.84

EXIST. CURVE 124
 P.I. STA. = 8+17.87
 $\Delta = 9^{\circ} 39' 31''$ (LT)
 $D = 19^{\circ} 05' 55''$
 $R = 300.00'$
 $T = 25.35'$
 $L = 50.57'$
 $E = 1.07'$
 $e =$
 P.C. STA. = 7+92.52
 P.T. STA. = 8+43.09

POINT	IL 57		LOCK & DAM ROAD		ELEVATION
	STATION	OFFSET	STATION	OFFSET	
A1	92+97.16	25.80' RT	9+73.53	79.65' LT	491.09
A2	93+09.80	27.41' RT	9+72.08	67.02' LT	491.18
A3	93+21.64	32.12' RT	9+67.49	55.17' LT	491.22
A4	93+31.93	39.65' RT	9+60.07	44.86' LT	491.17
A5	93+39.99	49.50' RT	9+50.28	36.76' LT	491.06
A6	93+45.32	61.06' RT	9+38.76	31.38' LT	490.87
A7	93+49.95	77.14' RT	9+22.71	26.66' LT	490.60
A8	93+53.82	93.43' RT	9+06.46	22.72' LT	490.31
A9	93+56.91	109.88' RT	8+90.03	19.56' LT	489.96
A10	93+59.22	126.45' RT	8+73.47	17.19' LT	489.55
A11	93+60.72	143.12' RT	8+56.81	15.62' LT	489.08
A12	93+61.42	159.83' RT	8+39.94	14.82' LT	488.60
A13	93+61.30	176.56' RT	8+22.37	14.18' LT	488.13
A14	93+60.37	193.27' RT	8+04.86	13.36' LT	487.67
A15	93+58.61	209.91' RT	7+87.62	12.40' LT	487.25
A16	93+56.04	226.45' RT	7+70.89	12.00' LT	486.85

LOCK & DAM ROAD C & EOP ELEVATIONS

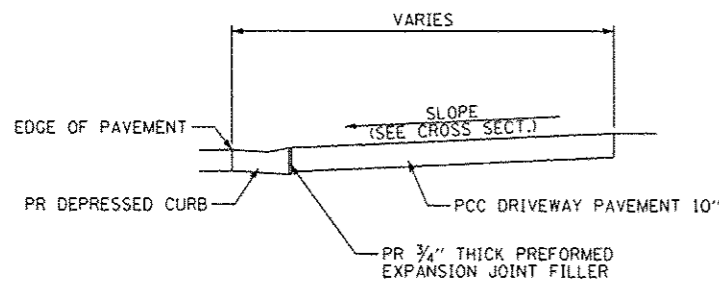
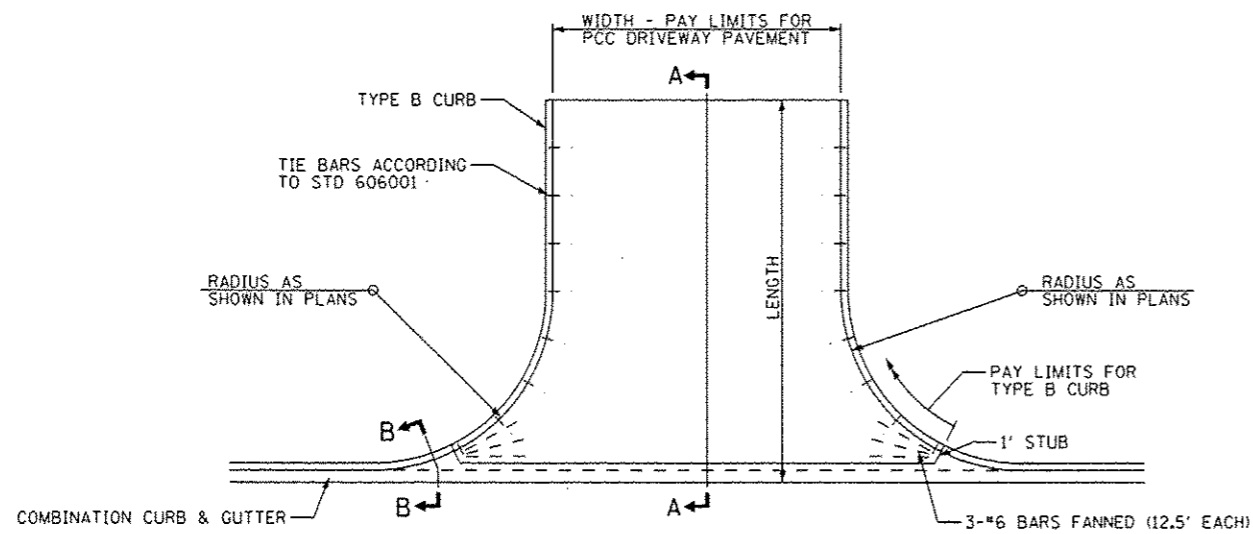
STATION	ELEVATION	OFFSET	ELEVATION
8+89.19	490.26	12.00' RT	490.16
9+00.00	490.54	12.00' RT	490.44
9+25.00	491.12	12.00' RT	491.02
9+50.00	491.61	12.00' RT	491.67
9+74.00	492.00	12.00' RT	492.19



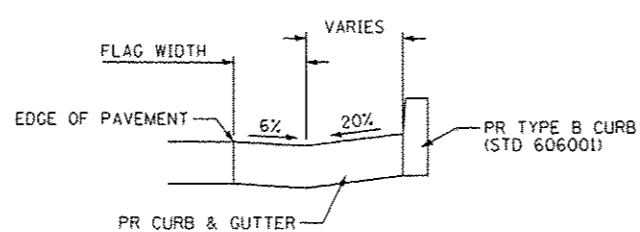
BEGIN IMPROVEMENT
 LOCK & DAM ROAD
 STA 7+50.00

STATE OF ILLINOIS
 DEPARTMENT OF TRANSPORTATION

GEOMETRIC DETAIL SHEET



SECTION A-A

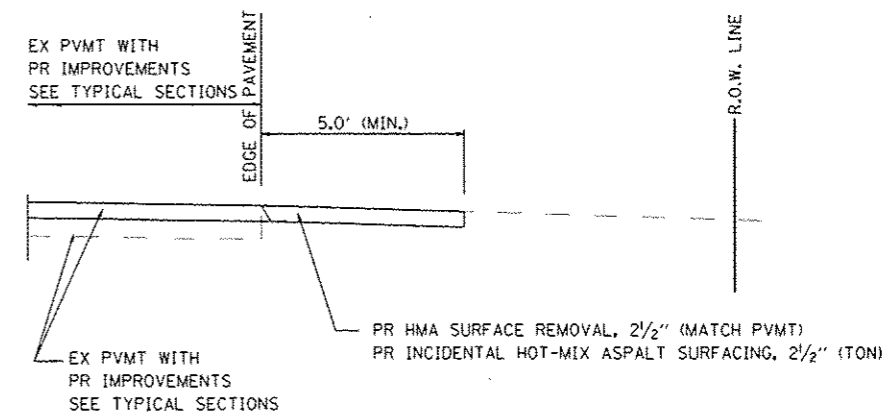
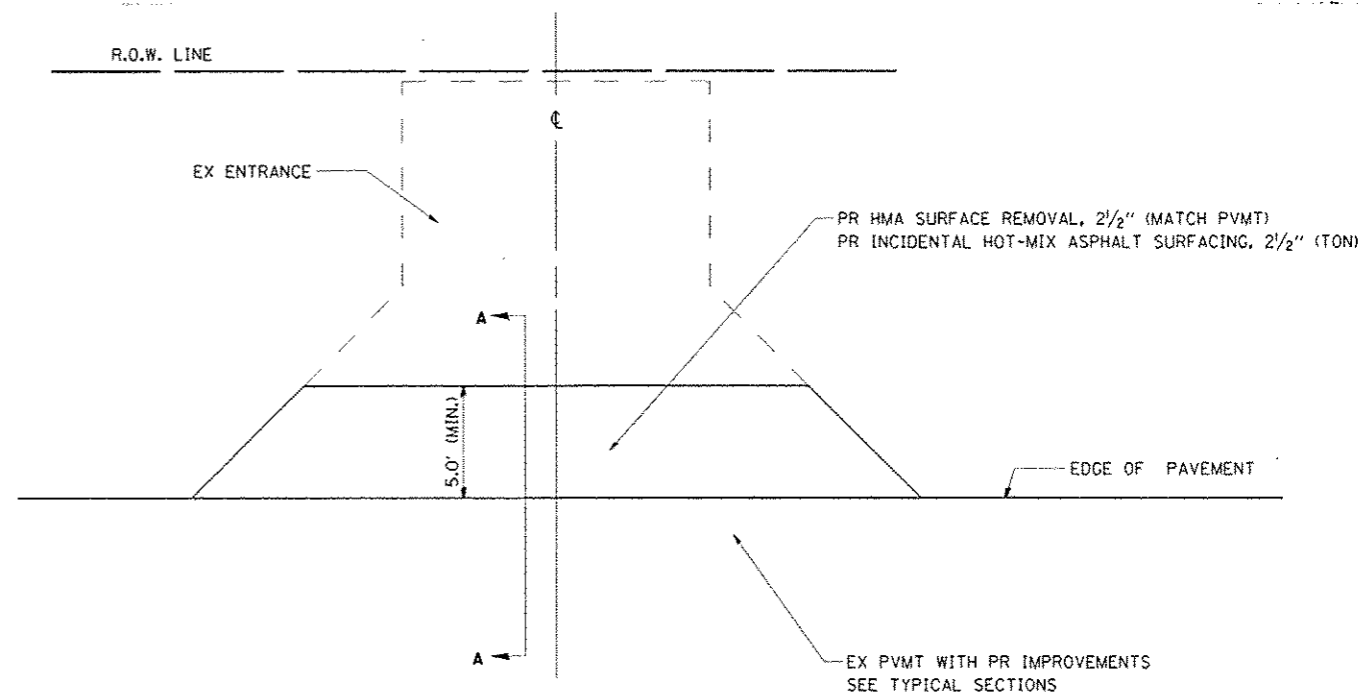


SECTION B-B

ENTRANCE DETAIL

NOT TO SCALE

NOTE: THE COST OF FURNISHING AND INSTALLING THE 3/4" PREFORMED EXPANSION JOINT AND REINFORCEMENT BARS SHALL BE INCLUDED IN THE COST OF THE PCC DRIVEWAY PAVEMENT



SECTION A-A FOR EX HOT-MIX ASPHALT

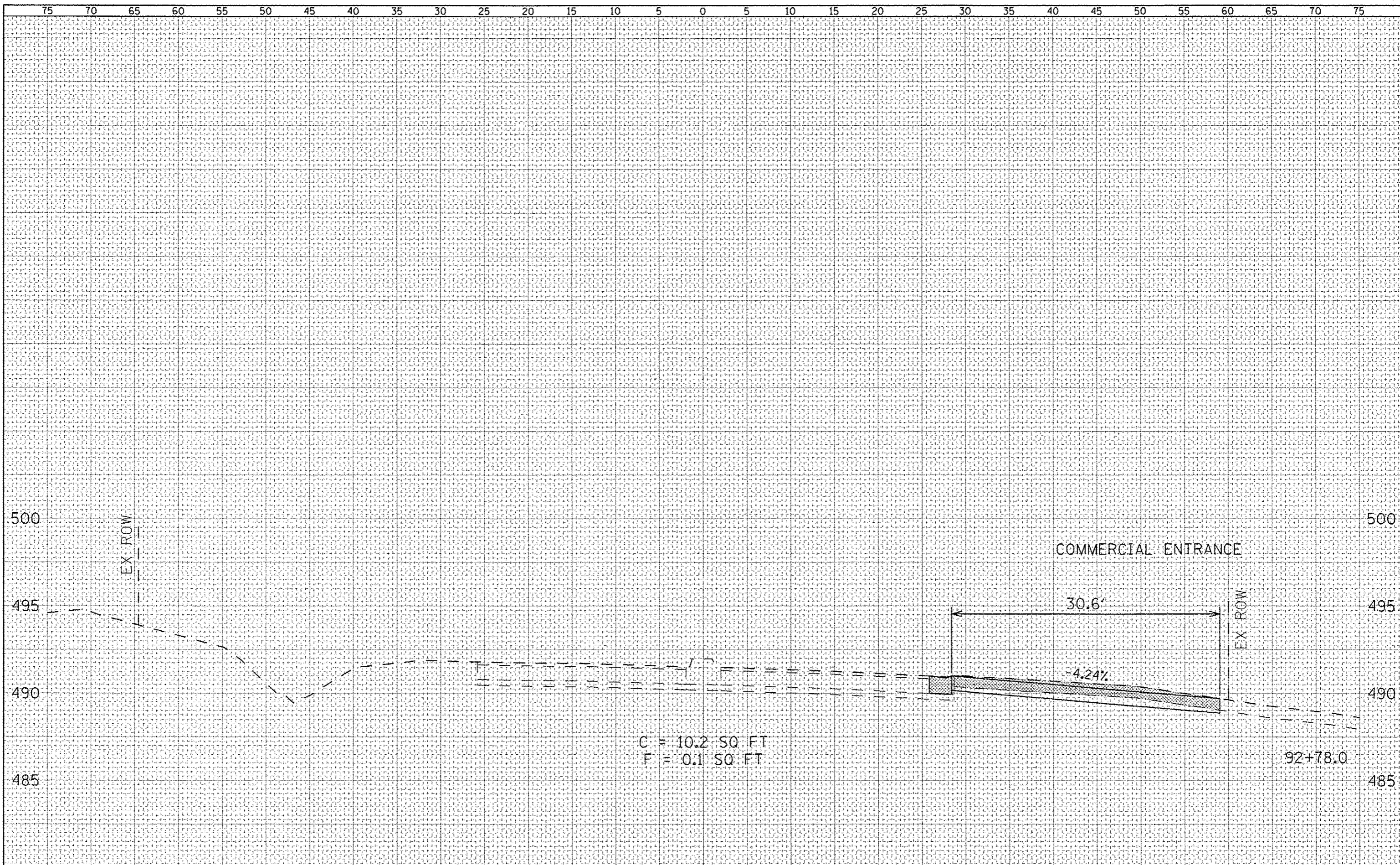
GENERAL NOTES:

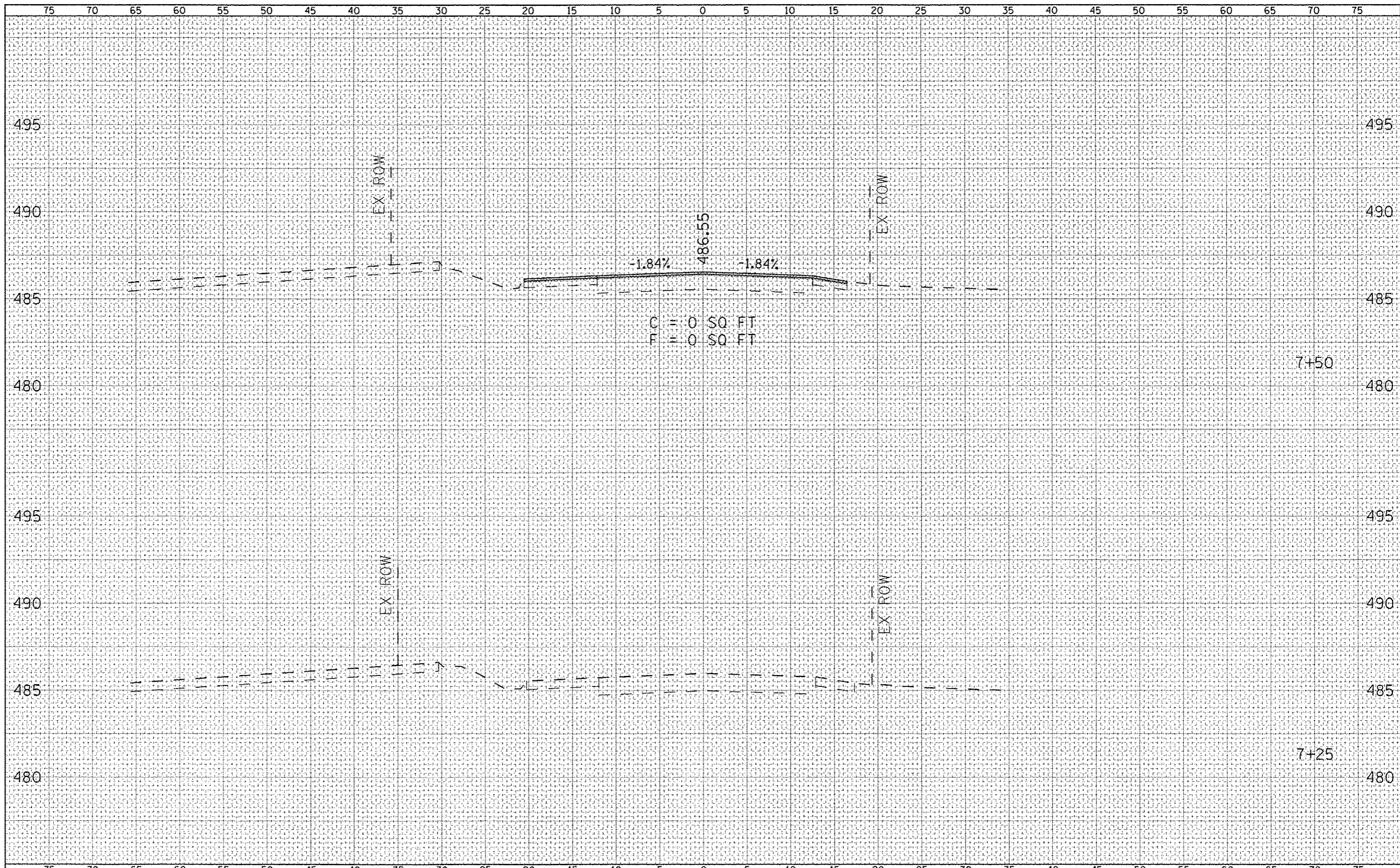
THE RESIDENT ENGINEER WILL DETERMINE THE EXACT TYPE OF IMPROVEMENT TO BE COMPLETED FOR ALL ENTRANCES ON THIS PROJECT.

THE PLAN DETAILS AND SCHEDULES SHOULD BE USED AS A GUIDE FOR THE ENGINEER TO IMPLEMENT THE FINAL DESIGN.

HOT-MIX ASPHALT REQUIRED TO CONSTRUCT THE ENTRANCES SHALL BE IN ACCORDANCE WITH THE APPLICABLE PORTIONS OF SECTION 406 AND 408 OF THE STANDARD SPECIFICATIONS AND AS DIRECTED BY THE ENGINEER.

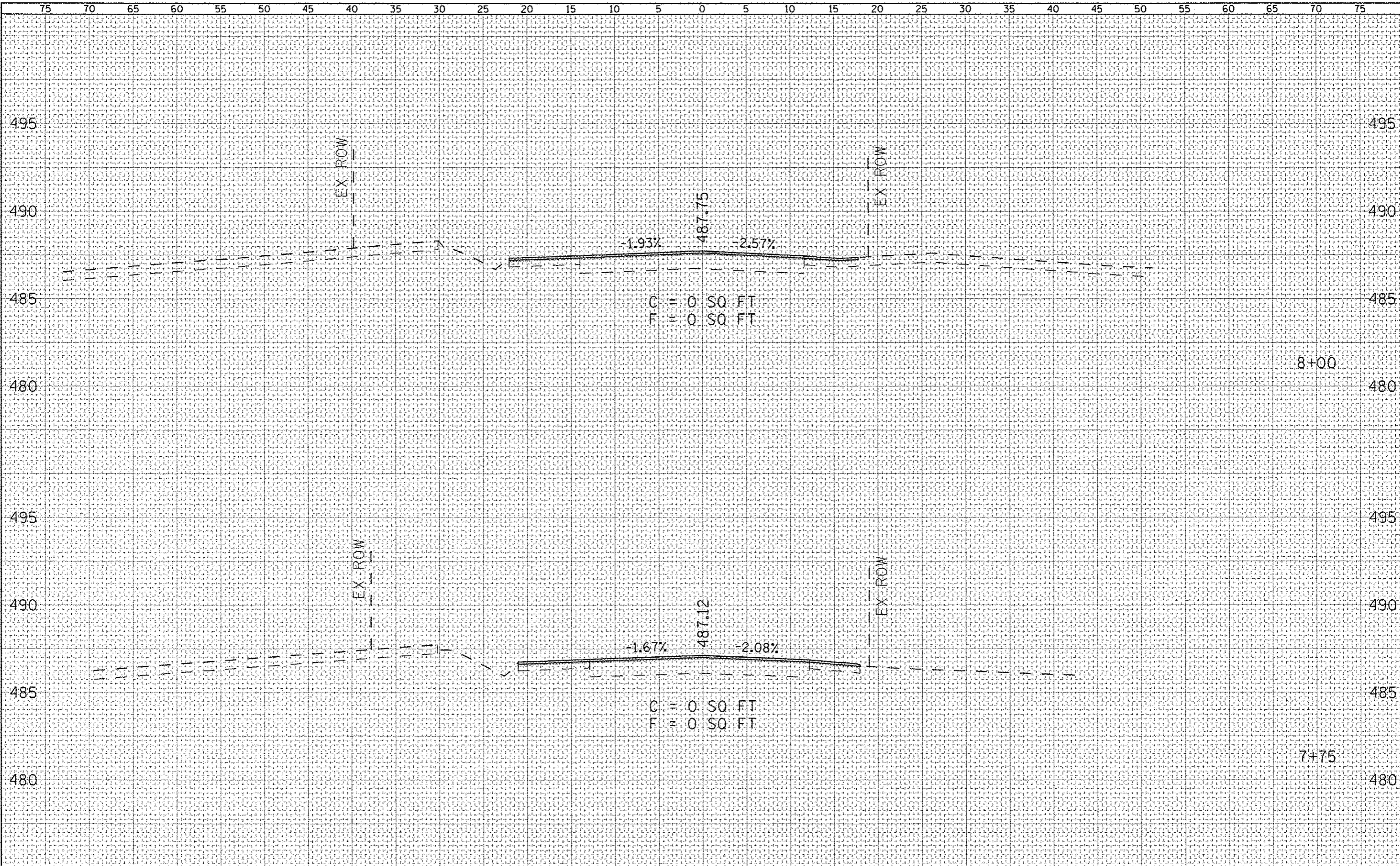
FILE NAME	USER NAME	DESIGNED	REVISED	STATE OF ILLINOIS DEPARTMENT OF TRANSPORTATION	ENTRANCE DETAILS			F.A.P. R.T.E.	SECTION	COUNTY	TOTAL SHEETS	SHEET NO.
qp\2011\11\00224\11-11-11 11 57 and 1d road\0011 sheets\0672F46-sht-Detail5.dwg	rb	DRAWN	REVISED		502	(53) N-1	ADAMS	20	14			
PLLOT SCALE = 1/8" = 1'		CHECKED	REVISED		CONTRACT NO. 72F46							
PLLOT DATE = 12/12/2012		DATE	REVISED		FED. ROAD DIST. NO. 6 ILLINOIS FED. AID PROJECT							
					SCALE: none	SHEET NO. 1 OF 1 SHEETS	STA.	TO STA.				





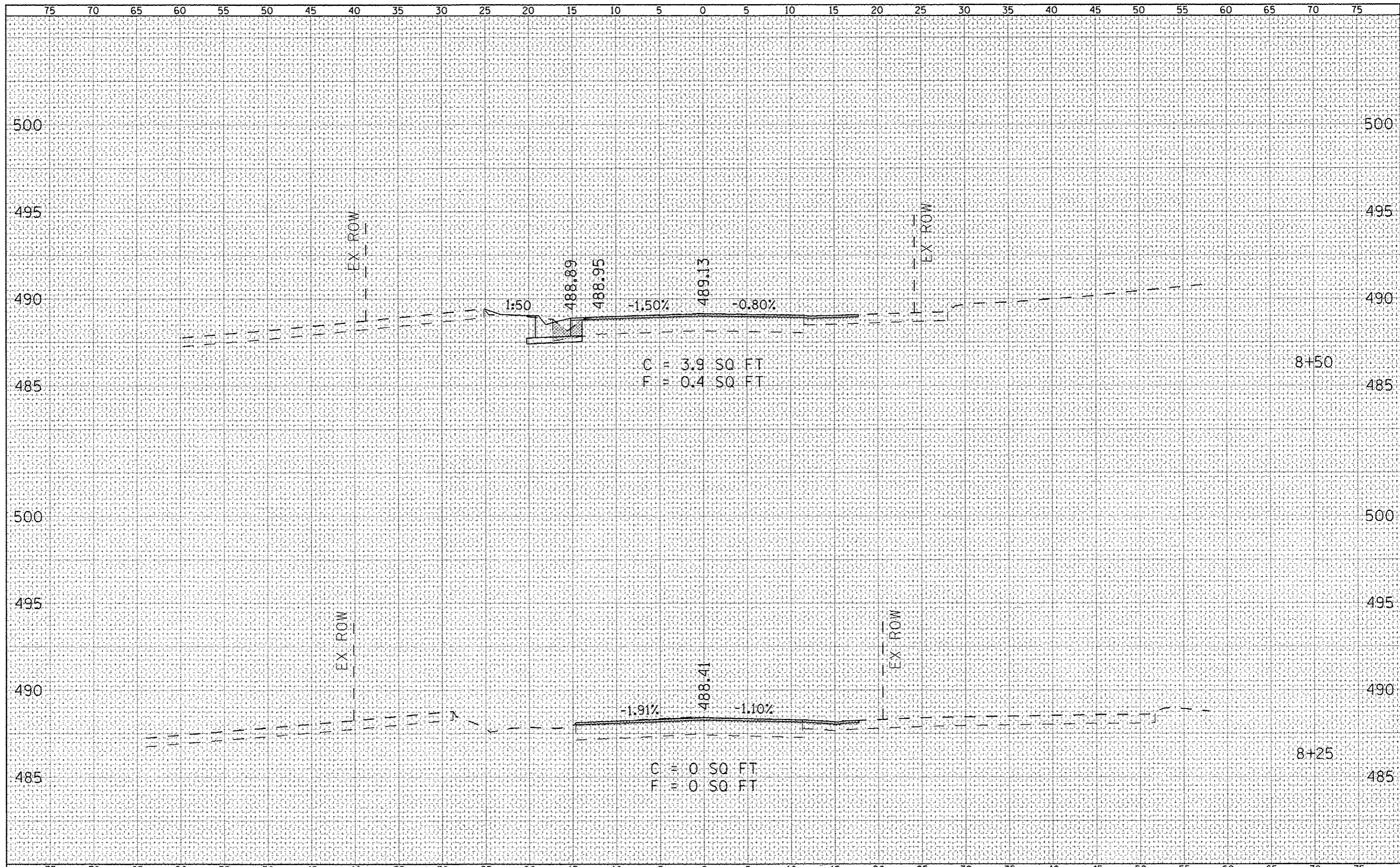
DATE	
BY	
SCALE	
PROJECT	
NO. & DATE	
REVISIONS	
APPROVED	

DATE	
BY	
SCALE	
PROJECT	
NO. & DATE	
REVISIONS	
APPROVED	



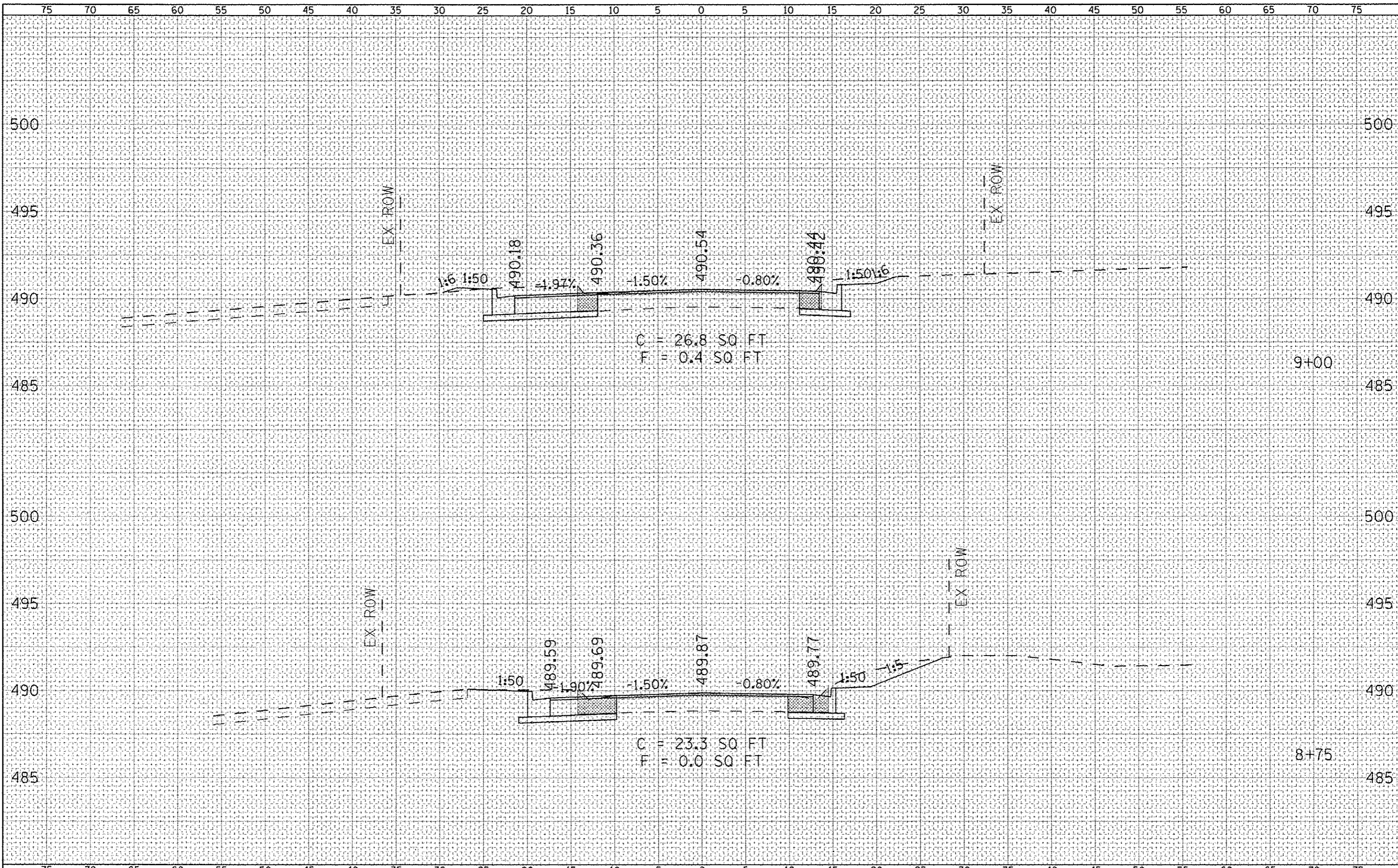
FILE NAME	
PROJECT	
DATE	
SCALE	
DESIGNED	
DRAWN	
CHECKED	
DATE	

FILE NAME	
PROJECT	
DATE	
SCALE	
DESIGNED	
DRAWN	
CHECKED	
DATE	



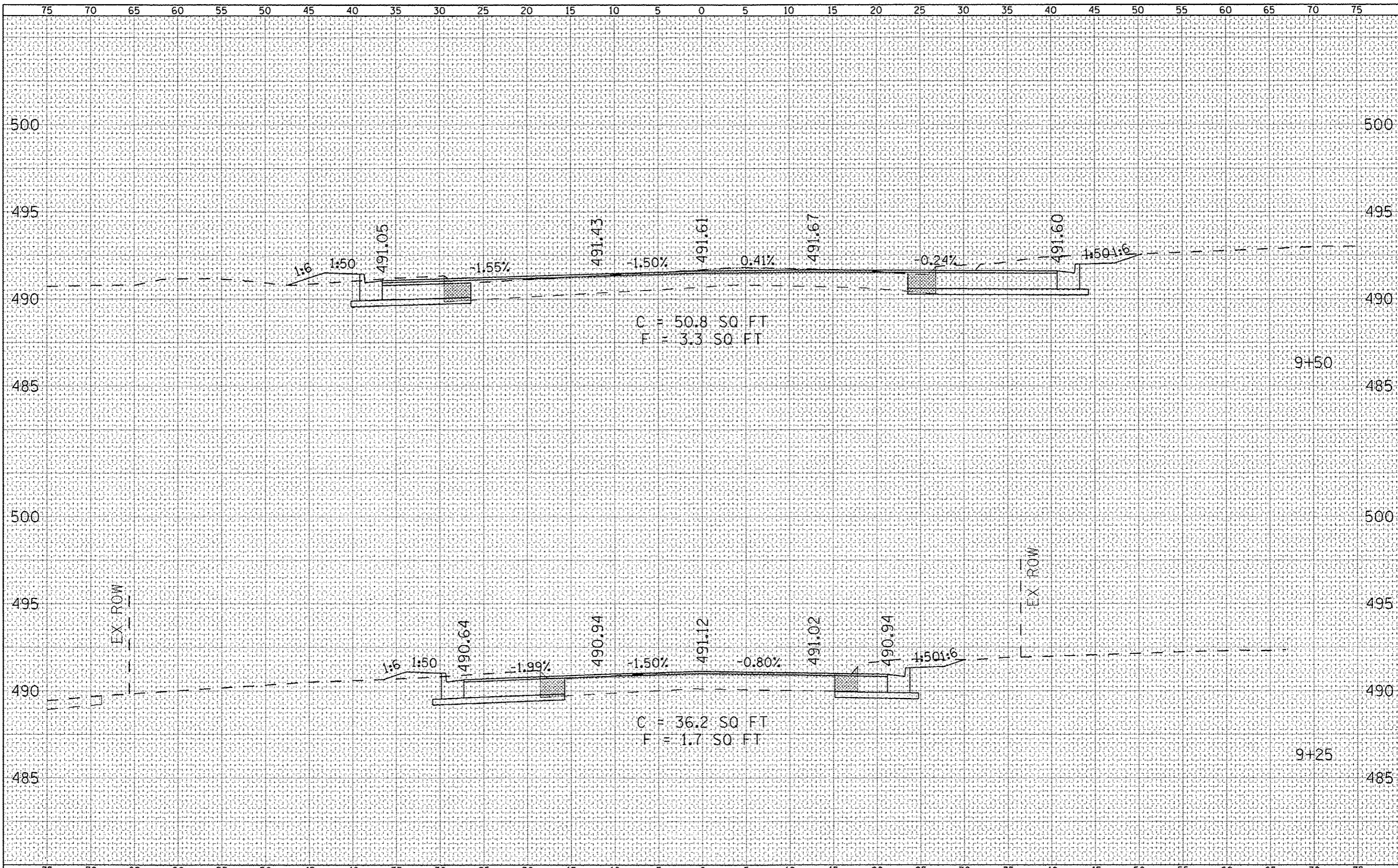
DATE	
BY	
DESIGNED	
CHECKED	
DRAWN	
IN CHARGE	
PROJECT	
DATE	

DATE	
BY	
DESIGNED	
CHECKED	
DRAWN	
IN CHARGE	
PROJECT	
DATE	



FINAL	DATE
DESIGNED	
DRAWN	
CHECKED	
DATE	

ORIGINAL	DATE
DESIGNED	
DRAWN	
CHECKED	
DATE	



DATE	
BY	
REVISIONS	
PROJECT	
TEMPLATE	
AREAS	
NOTE BOOK	
ASST. CHECKED	

DATE	
BY	
REVISIONS	
PROJECT	
TEMPLATE	
AREAS	
NOTE BOOK	
ASST. CHECKED	