

04-26-13 LETTING ITEM 194

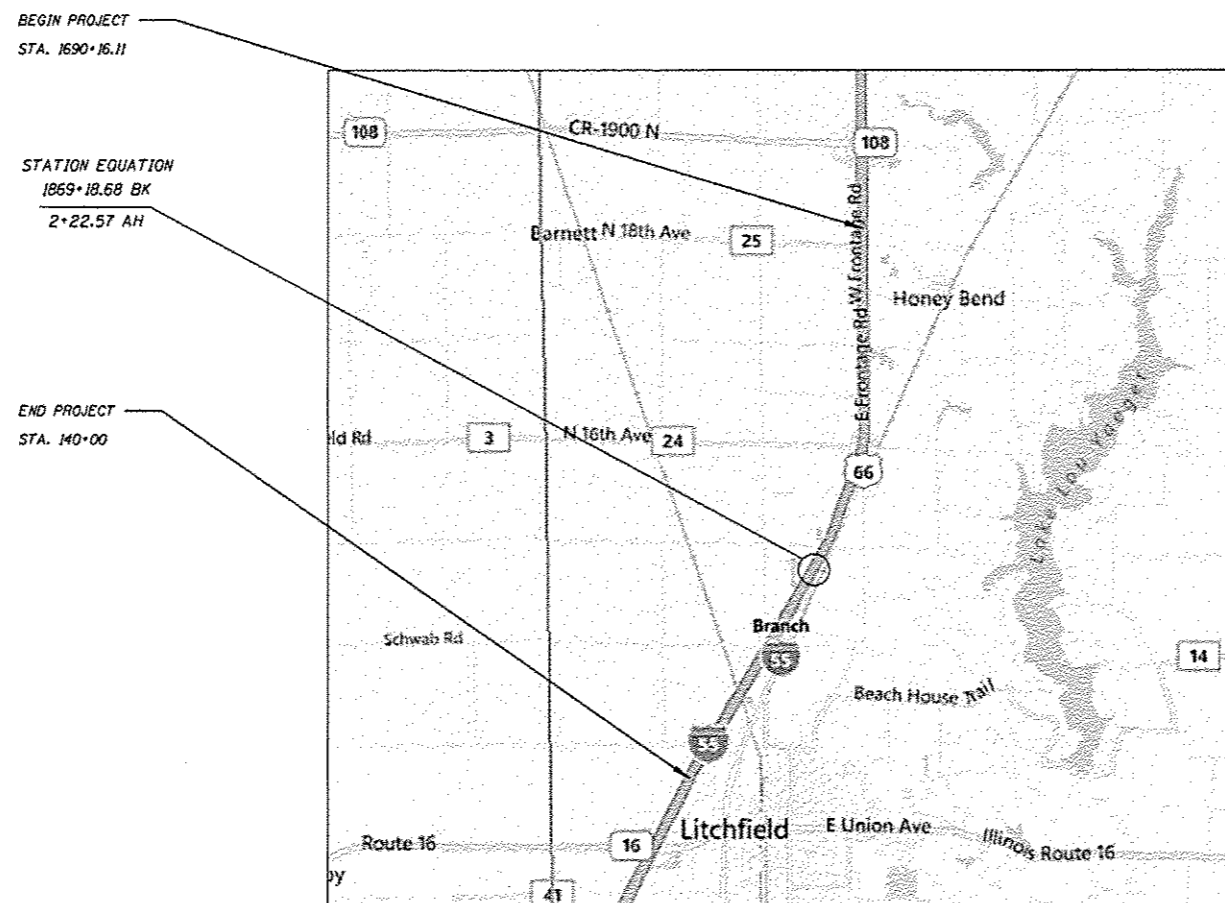
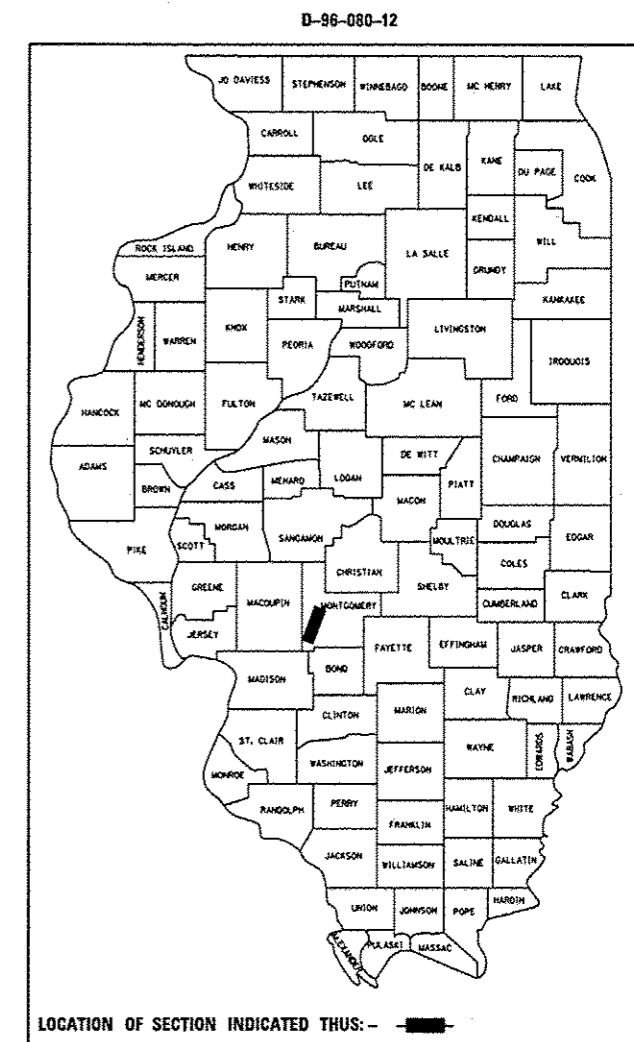
STATE OF ILLINOIS
DEPARTMENT OF TRANSPORTATION
DIVISION OF HIGHWAYS
**PROPOSED
CONTRACT MAINTENANCE**

FAI 55 (I-55)
SECTION (68-1)I-4, (68-2)I-3
PAVEMENT JOINT SEAL
MONTGOMERY COUNTY

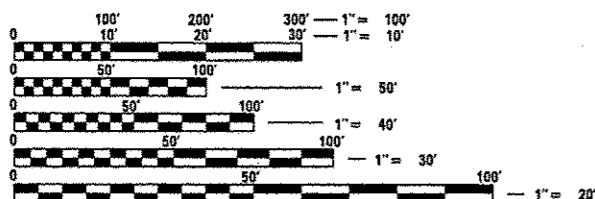
D-96-080-12

FOR INDEX OF SHEETS, SEE SHEET NO. 2

F.A.I. RTE.	SECTION	COUNTY	TOTAL SHEETS	SHEET NO.
55	(68-1)I-4, (68-2)I-3	MONTGOMERY	5	1
FED. ROAD DIST. NO. -		ILLINOIS	CONTRACT NO. 72F62	



A.D.T. 11,600(3,100)



FULL SIZE PLANS HAVE BEEN PREPARED USING STANDARD ENGINEERING SCALES. REDUCED SIZED PLANS WILL NOT CONFORM TO STANDARD SCALES. IN MAKING MEASUREMENTS ON REDUCED PLANS, THE ABOVE SCALES MAY BE USED.

J.U.L.I.E.
JOINT UTILITY LOCATION INFORMATION FOR EXCAVATION
1-800-892-0123
OR 811

PLAN AND CONTRACT TECHNICIAN
TIMOTHY SHARP (217)782-7743

CONTRACT NO. 72F62

GROSS LENGTH = 31,680 FT = 6.00 MILE

STATE OF ILLINOIS
DEPARTMENT OF TRANSPORTATION
DIVISION OF HIGHWAYS

SUBMITTED September 4, 2012
Roger Z. John
DEPUTY DIRECTOR OF HIGHWAYS, REGION ENGINEER

October 5, 2012
John D. Baranelli PE, Ia
acting ENGINEER OF DESIGN AND ENVIRONMENT

October 5, 2012
William R. Fray, Ia
acting DIRECTOR OF HIGHWAYS, CHIEF ENGINEER

**PRINTED BY THE AUTHORITY
OF THE STATE OF ILLINOIS**

INDEX

- 1 COVER SHEET
- 2 INDEX / STDS / SIGNATURES
- 3 QUANTITIES
- 4 LOCATION MAP
- 5 CRACK SEALING DETAILS

STANDARDS

- 701101-02
- 701106-02
- 701400-05
- 701401-06
- 701411-08
- 701426-04
- 701901-02

STATE OF ILLINOIS DEPARTMENT OF TRANSPORTATION DIVISION OF HIGHWAYS DISTRICT 6	
EXAMINED <u>Aug 30</u>	20 <u>12</u>
<u>William W. Byrd</u> ENGINEER OF OPERATIONS	
EXAMINED <u>AUG 15</u>	20 <u>12</u>
<u>[Signature]</u> ENGINEER OF PROJECT IMPLEMENTATION	
EXAMINED <u>August 16</u>	20 <u>12</u>
<u>2RMLI</u> ENGINEER OF PROGRAM DEVELOPMENT	



BEGIN PROJECT
STA. 1690+16.11

STATION EQUATION
 $\frac{1869+18.68 \text{ BK}}{2+22.57 \text{ AH}}$

END PROJECT
STA. 140+00



FILE NAME *	USER NAME * Shorptd	DESIGNED -	REVISED -
SA\CONTRMAINT\CAD\72F62\4 PROJECT LOCATION.dgn		DRAWN -	REVISED -
Default		CHECKED -	REVISED -
	PLOT SCALE * 1.038008 / in.	DATE -	REVISED -
	PLOT DATE * Aug-02-2012 08:34:09AM		

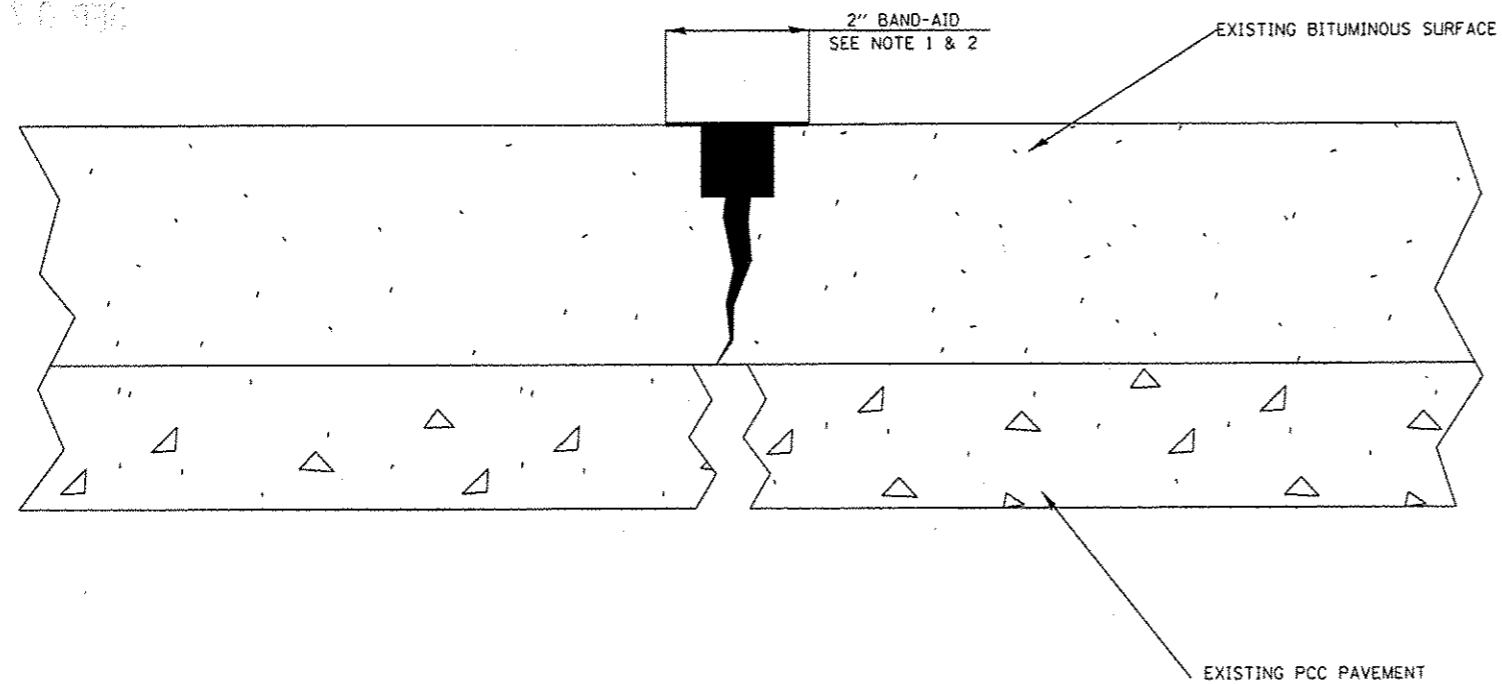
**STATE OF ILLINOIS
DEPARTMENT OF TRANSPORTATION**

PROJECT LOCATION

SCALE: SHEET OF SHEETS STA. TO STA.

F.A.I. RTE.	SECTION	COUNTY	TOTAL SHEETS	SHEET NO.
55	(68-1) 1-4, (68-2) 1-3	MONTGOMERY	5	4
CONTRACT NO. 72F62				
ILLINOIS FED. AID PROJECT				

7/20/12 10:00 AM



LONGITUDINAL AND CENTERLINE
JOINT CRACKS

(NOT DRAWN TO SCALE)

NOTES:

1. ROUT OR SAW TO 3/4" WIDE BY 3/4" DEEP (1:1 RATIO).
2. SLIGHTLY OVERFILL WITH SEALANT, IMMEDIATELY SQUEEGEE IN A SEPARATE OPERATION TO PROVIDE A 2" WIDE "BAND-AID" EFFECT FLUSH WITH PAVEMENT SURFACE WITH EDGES FEATHERED OUT.
3. THE "BAND-AID" WIDTH SHALL BE REDUCED OR ELIMINATED IN AREAS ADJACENT TO EXISTING PAVEMENT MARKINGS.
4. CRACK ROUTING AND FILLING SHALL CONFORM TO SECTION 451 OF THE STANDARD SPECIFICATIONS.

FILE NAME *	USER NAME * Sharptd	DESIGNED -	REVISED -	STATE OF ILLINOIS DEPARTMENT OF TRANSPORTATION	CRACK SEALING DETAILS				F.A.I. RTE.	SECTION	COUNTY	TOTAL SHEETS	SHEET NO.		
S:\CONTRMAINT_CAD\72F62\5 CRACK SEAL DETAILS.dgn		DRAWN -	REVISED -		SCALE:	SHEET	OF	SHEETS	STA.	TO STA.	55	(68-1) 1-4, (68-2) 1-3	MONTGOMERY	5	5
PLOT SCALE = 40.0000' / in.		CHECKED -	REVISED -		ILLINOIS FED. AID PROJECT										
PLOT DATE = Aug-30-2012 09:55:09AM		DATE -	REVISED -												