

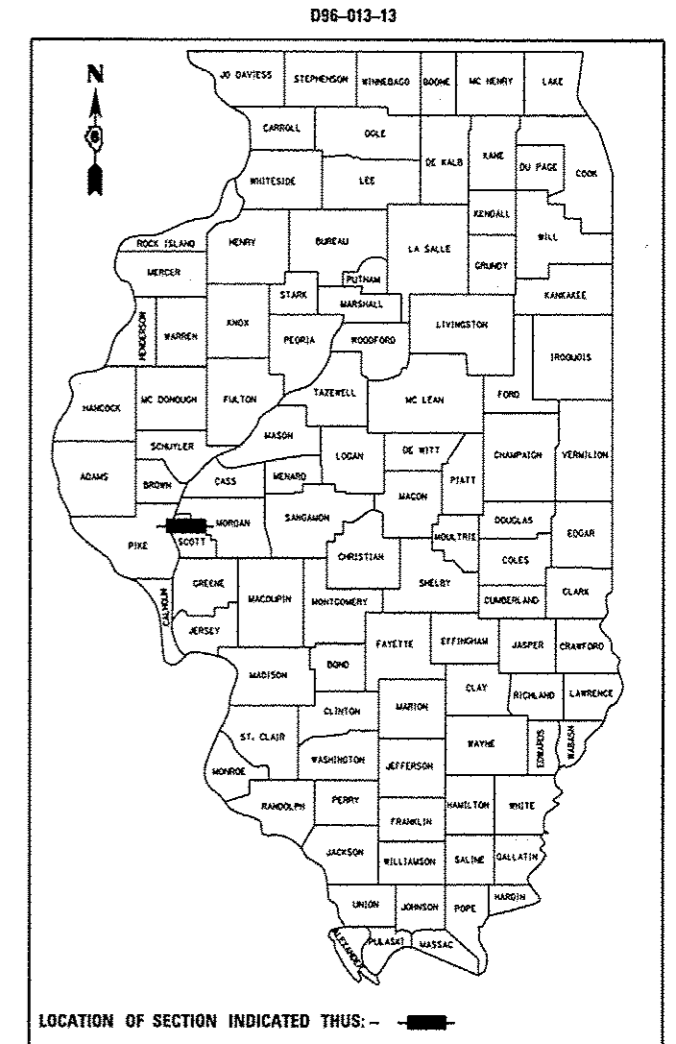
STATE OF ILLINOIS
DEPARTMENT OF TRANSPORTATION
DIVISION OF HIGHWAYS
**PROPOSED
CONTRACT MAINTENANCE**

FAP 562 (IL 100)
SECTION (117) RS-8, I-1
PATCHING, RESURFACING, ADA SIDEWALKS
TYPE of IMPROVEMENT
SCOTT COUNTY (171)

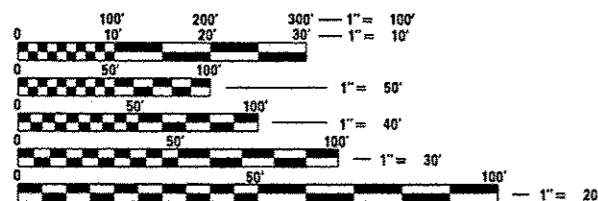
C-96-013-13

| F.A.P. RTE. | SECTION | COUNTY | TOTAL SHEETS | SHEET NO. |
|-------------|-----------------|----------|--------------------|-----------|
| 562 | (117) RS-8, I-1 | SCOTT | 7 | 1 |
| | | ILLINOIS | CONTRACT NO. 72F81 | |

FOR INDEX OF SHEETS, SEE SHEET NO. 2



ADT: 2,850 (2011)
MU: 140
SU: 425

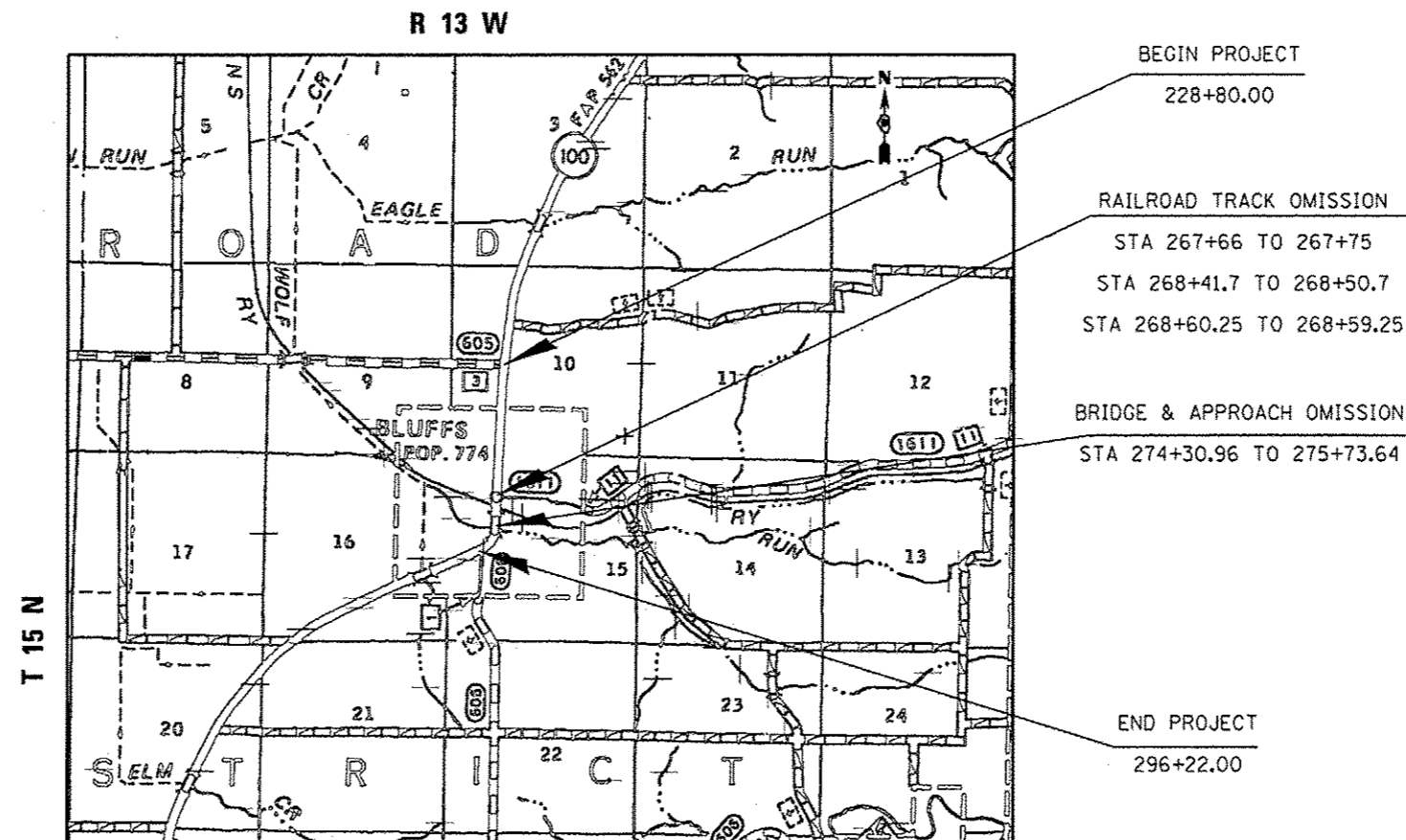


FULL SIZE PLANS HAVE BEEN PREPARED USING STANDARD ENGINEERING SCALES. REDUCED SIZED PLANS WILL NOT CONFORM TO STANDARD SCALES. IN MAKING MEASUREMENTS ON REDUCED PLANS, THE ABOVE SCALES MAY BE USED.

J.U.L.I.E.
JOINT UTILITY LOCATION INFORMATION FOR EXCAVATION
1-800-892-0123
OR 811

PLAN AND CONTRACT TECHNICIAN
TIMOTHY SHARP (217) 782-7743
DAVE SHAH

CONTRACT NO. 72F81



NET LENGTH = 6,742.00 FT. = 1.277 MILE

STATE OF ILLINOIS
DEPARTMENT OF TRANSPORTATION
DIVISION OF HIGHWAYS

SUBMITTED February 11, 2013
Ryan Z. Dunlap
DEPUTY DIRECTOR OF HIGHWAYS, REGION ENGINEER

March 22, 2013
John D. Baranzelli, PE, Ia
acting ENGINEER OF DESIGN AND ENVIRONMENT

March 22, 2013
Omer Osman, PE, Ia
DIRECTOR OF HIGHWAYS, CHIEF ENGINEER

**PRINTED BY THE AUTHORITY
OF THE STATE OF ILLINOIS**

INDEX

| SHEET NO. | DESCRIPTION |
|-----------|------------------------------|
| 1. | COVER SHEET |
| 2. | INDEX, STANDARD, SIGNATURES |
| 3. | SUMMARY OF QUANTITIES |
| 4. | SCHEDULE OF QUANTITIES |
| 5. | PROJECT LOCATION |
| 6. | TYPICAL SECTIONS |
| 7. | SIDEWALK PLAN VIEW & DETAILS |

STANDARDS

| STANDARD NO. | DESCRIPTION |
|--------------|---|
| 424001-07 | CURB RAMPS FOR SIDEWALKS |
| 424016-01 | MID-BLOCK CURB RAMPS FOR SIDEWALKS |
| 606211-03 | OUTLETS TYPE 2 FOR TYPE B GUTTER |
| 701001-02 | OFF-ROAD OPERATIONS, 2L, 2W MORE THAN 4.5 M (15') AWAY |
| 701201-04 | LANE CLOSURE, 2L, 2W, DAY ONLY, FOR SPEEDS \geq 45 |
| 701306-03 | LANE CLOSURE, 2L, 2W, SLOW MOVING OPERATIONS DAY ONLY, FOR SPEEDS \geq 45 |
| 701311-03 | LANE CLOSURE, 2L, 2W, MOVING OPERATIONS DAY ONLY |
| 701501-06 | URBAN LANE CLOSURE, 2L, 2W, UNDIVIDED |
| 701801-05 | SIDEWALK, CORNER OR CROSSWALK CLOSURE |
| 701901-02 | TRAFFIC CONTROL DEVICES |

**STATE OF ILLINOIS
DEPARTMENT OF TRANSPORTATION
DIVISION OF HIGHWAYS
DISTRICT 6**

EXAMINED 2/4 20 13
Bill M. Ryan
 ENGINEER OF OPERATIONS

EXAMINED OCT 16 20 12
Tommy Z...
 ENGINEER OF PROJECT IMPLEMENTATION

EXAMINED Jan 14 20 13
QRMLY
 ENGINEER OF PROGRAM DEVELOPMENT

MIXTURE REQUIREMENTS

THE FOLLOWING MIXTURE REQUIREMENTS ARE APPLICABLE FOR THIS PROJECT

| MIXTURE USE(S): | SURFACE | PATCHING |
|----------------------|----------------|------------|
| AC/PG: | PG 64-22 | PG 64-22 |
| DESIGN AIR VOIDS: | 4.0% @ N70 | 4.0% @ N70 |
| MIXTURE COMPOSITION: | IL 9.5 OR 12.5 | IL 19.0 |
| FRICTION AGGREGATE: | MIX C | N/A |

STATE OF ILLINOIS
DEPARTMENT OF TRANSPORTATION

INDEX, NOTES, STANDARDS, SIGNATURE

| F.A.P. RTE. | SECTION | COUNTY | TOTAL SHEETS | SHEET NO. |
|-------------|-----------------|--------|--------------|-----------|
| 562 | (117) RS-8, I-1 | SCOTT | 7 | 2 |

CONTRACT NO. 72F81

| FILE NAME * | USER NAME * | DESIGNED - | REVISED - |
|---|-------------|-------------|-----------|
| cd:\pwr\work\p101dot\shahdm\032009\06xxxx\sh1-gennote.dgn | shahdm | DRAWN - DSM | REVISED - |
| | | CHECKED - | REVISED - |
| | | DATE - | REVISED - |

SCALE: SHEET OF SHEETS STA. TO STA.

ILLINOIS FED. AID PROJECT

| CODE NO. | ITEM | UNIT | TOTAL QUANTITY | CONSTR. CODE | |
|---------------------|---|------------------|------------------|-------------------|------------------|
| | | | | 80% STATE ROADWAY | 20% CITY ROADWAY |
| | | | | 0005 S.N. | 0005 S.N. |
| 40600200 | BITUMINOUS MATERIALS (PRIME COAT) | TON | 7.2 | 7.2 | |
| 40600895 | CONSTRUCTING TEST STRIP | EACH | 1 | 1 | |
| 40600990 | TEMPORARY RAMP | SQ YD | 28 | 28 | |
| 40603315 | HOT-MIX ASPHALT SURFACE COURSE, MIX "C", N70 | TON | 1,587 | 1,587 | |
| 42400100 | PORTLAND CEMENT CONCRETE SIDEWALK 4 INCH | SQ FT | 155 | 155 | |
| 42400410 | PORTLAND CEMENT CONCRETE SIDEWALK 8 INCH | SQ FT | 1,983 | 1,570 | 393 |
| 42400800 | DETECTABLE WARNINGS | SQ FT | 20 | 20 | |
| 44000155 | HOT-MIX ASPHALT SURFACE REMOVAL, 1 1/2" | SQ YD | 18,889 | 18,889 | |
| 44000400 | GUTTER REMOVAL | FT | 23 | 23 | |
| 44000600 | SIDEWALK REMOVAL | SQ FT | 215 | 215 | |
| 44200144 | PAVEMENT PATCHING, TYPE II, 12 INCH | SQ YD | 120 | 120 | |
| 44200148 | PAVEMENT PATCHING, TYPE III, 12 INCH | SQ YD | 75 | 75 | |
| 44200150 | PAVEMENT PATCHING, TYPE IV, 12 INCH | SQ YD | 75 | 75 | |
| 48101200 | AGGREGATE SHOULDERS, TYPE B | TON | 139 | 139 | |
| 67100100 | MOBILIZATION | L SUM | 1 | 1 | |

| CODE NO. | ITEM | UNIT | TOTAL QUANTITY | CONSTR. CODE | |
|------------|---|-------|----------------|-------------------|------------------|
| | | | | 80% STATE ROADWAY | 20% CITY ROADWAY |
| | | | | 0005 S.N. | 0005 S.N. |
| 70100450 | TRAFFIC CONTROL AND PROTECTION, STANDARD 701201 | L SUM | 1 | 1 | |
| 70100460 | TRAFFIC CONTROL AND PROTECTION, STANDARD 701306 | L SUM | 1 | 1 | |
| 70102820 | TRAFFIC CONTROL AND PROTECTION, STANDARD 701501 | L SUM | 1 | 1 | |
| 70102840 | TRAFFIC CONTROL AND PROTECTION, STANDARD 701801 | L SUM | 1 | 1 | |
| 70300100 | SHORT TERM PAVEMENT MARKING | FOOT | 1,360 | 1,360 | |
| 70301000 | WORK ZONE PAVEMENT MARKING REMOVAL | SQ FT | 227 | 227 | |
| * 78000300 | THERMOPLASTIC PAVEMENT MARKING - LINE 5" | FOOT | 16,662 | 16,662 | |
| * 78100100 | RAISED REFLECTIVE PAVEMENT MARKER | EACH | 85 | 85 | |
| 78300200 | RAISED REFLECTIVE PAVEMENT MARKER REMOVAL | EACH | 85 | 85 | |
| X6063000 | CONCRETE GUTTER, TYPE B (SPECIAL) | FT | 23 | 23 | |
| Z0048665 | RAILROAD PROTECTIVE LIABILITY INSURANCE | L SUM | 1 | 1 | |

*SPECIALTY ITEM

| LOCATION | | LENGTH | WIDTH | AREA | 42400100 |
|--------------|-----------|--------|--------|-----------|--|
| STATION | | | | | PORTLAND CONCRETE CEMENT SIDEWALK, 4 INCH |
| FROM | TO | (FOOT) | (FOOT) | (SQ. FT.) | (SQ. FT.) |
| WEST | | | | | |
| 260+54.00 | 260+77.00 | 23 | 5 | | 115 |
| - | - | 8 | 5 | | 40 |
| TOTAL | | | | 0 | 155 |

| PAVEMENT MARKING SCHEDULE | | | |
|---------------------------|------------|----------------------------------|--------|
| STATION | TYPE | THERMOPASTIC PAVEMENT MARKING 5" | |
| | | WHITE | YELLOW |
| LT & RT 228+70 TO 296+70 | EDGE | 13600 | |
| LT & RT 228+70 TO 267+90 | SKIP-DASH | | 980 |
| LT & RT 268+80 TO 296+22 | SKIP-DASH | | 686 |
| RT 265+64 TO 268+80 | NO PASSING | | 316 |
| LT 267+90 TO 272+50 | NO PASSING | | 460 |
| RT 288+30 TO 294+50 | NO PASSING | | 620 |
| SUBTOTAL | | 13600 | 3062 |
| TOTAL | | 16662 | |

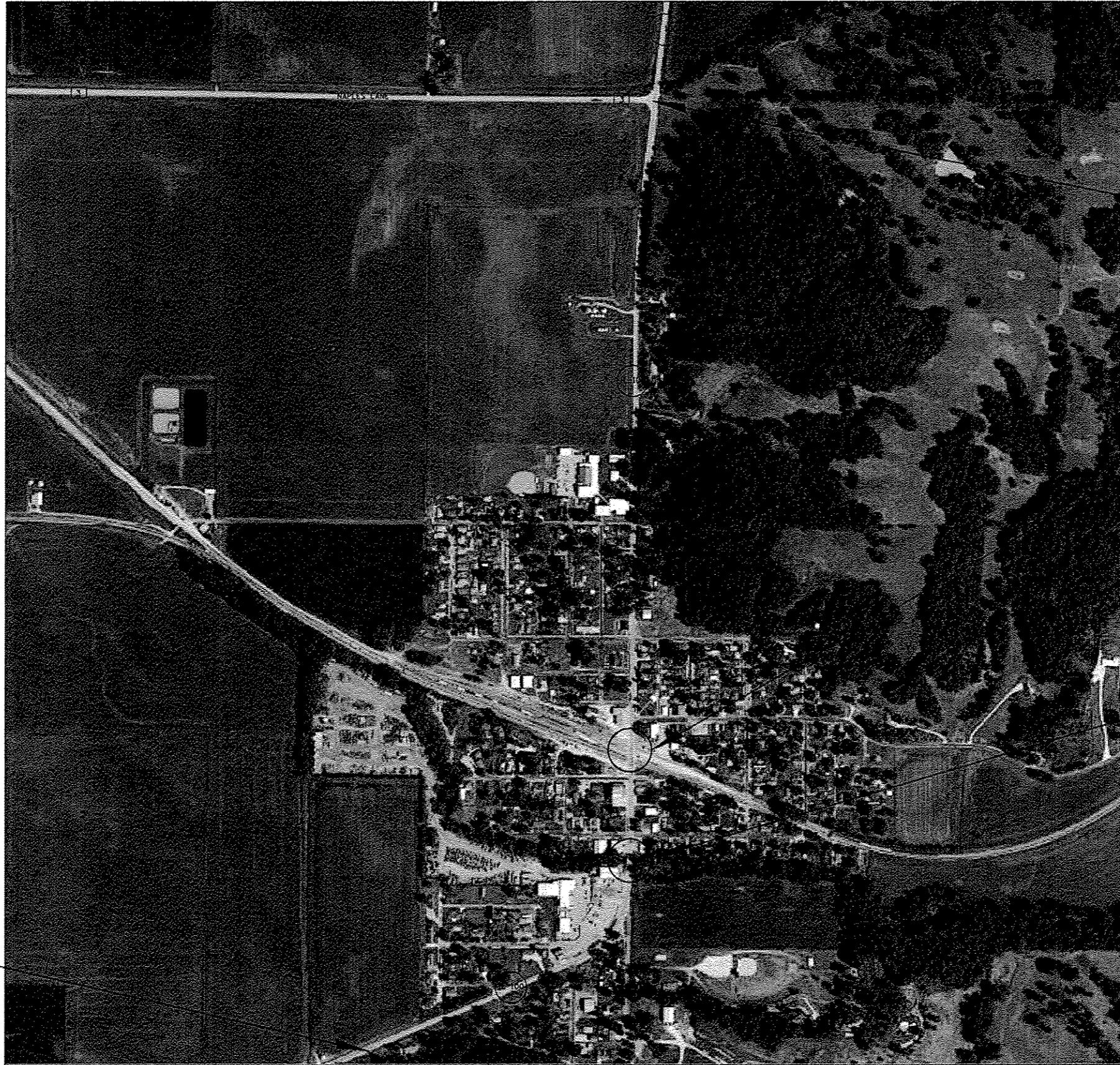
| LOCATION | | LENGTH | WIDTH | AREA | 44000600 |
|--------------|-----------|--------|--------|-----------|------------------|
| STATION | | | | | SIDEWALK REMOVAL |
| FROM | TO | (FOOT) | (FOOT) | (SQ. FT.) | (SQ. FT.) |
| WEST | | | | | |
| 260+54.56 | 260+77.00 | 23 | 5 | | 115 |
| - | - | 8 | 5 | | 40 |
| 265+28.71 | 265+33.71 | 6 | 5 | | 30 |
| 265+78.76 | 265+83.76 | 6 | 5 | | 30 |
| TOTAL | | | | 0 | 215 |

| LOCATION | 42400800 |
|--------------|-------------------------------------|
| | DETECTABLE WARNINGS (SQ. FT.) |
| WEST | |
| 260+56.25 | 10 |
| 260+67.00 | 10 |
| TOTAL | 20 |

STATE OF ILLINOIS
DEPARTMENT OF TRANSPORTATION

SCHEDULE OF QUANTITIES

| | | | | | | | | | |
|--|--------------------|-------------|-----------|-------------------------------------|-----------------------------|-----------------|--------|--------------|-----------|
| FILE NAME * | USER NAME * shahdm | DESIGNED - | REVISED - | SCALE: SHEET OF SHEETS STA. TO STA. | F.A.P. RTE. | SECTION | COUNTY | TOTAL SHEETS | SHEET NO. |
| ct:\pw\work\p1dot\shahdm\032009\06xxxx\shht\schedule.dgn | | DRAWN - DMS | REVISED - | | 562 | (711) RS-0, 1-1 | SCOTT | 7 | 4 |
| PLOT SCALE * 48.0000 / / in. | | CHECKED - | REVISED - | | CONTRACT NO. 72F81 | | | | |
| PLOT DATE * Mar-26-2013 04:23:17PM | | DATE - | REVISED - | | [ILLINOIS] FED. AID PROJECT | | | | |



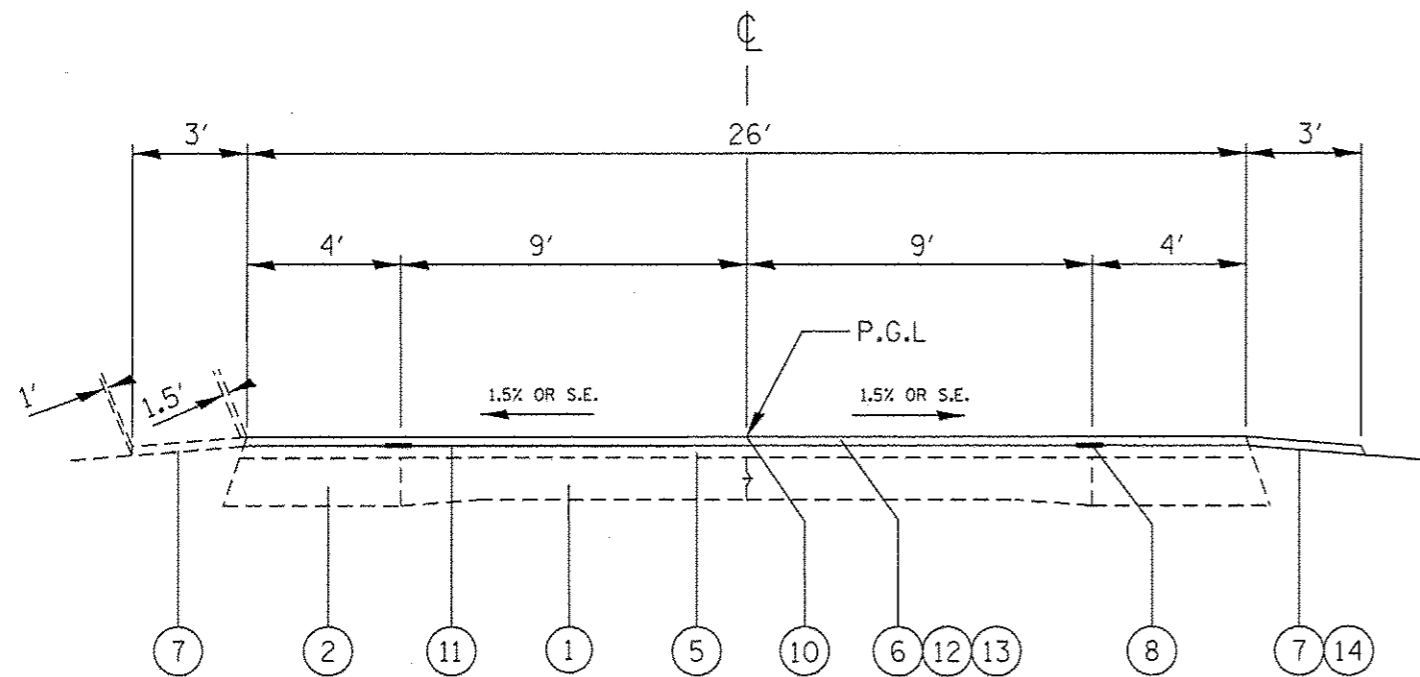
BEGIN PROJECT
228+80.00

RAILROAD TRACK OMISSION
STA 267+66 TO 267+75
STA 268+41.7 TO 268+50.7
STA 268+60.25 TO 268+59.25

BRIDGE & APPROACH OMISSION
STA 274+30.96 TO 275+73.64

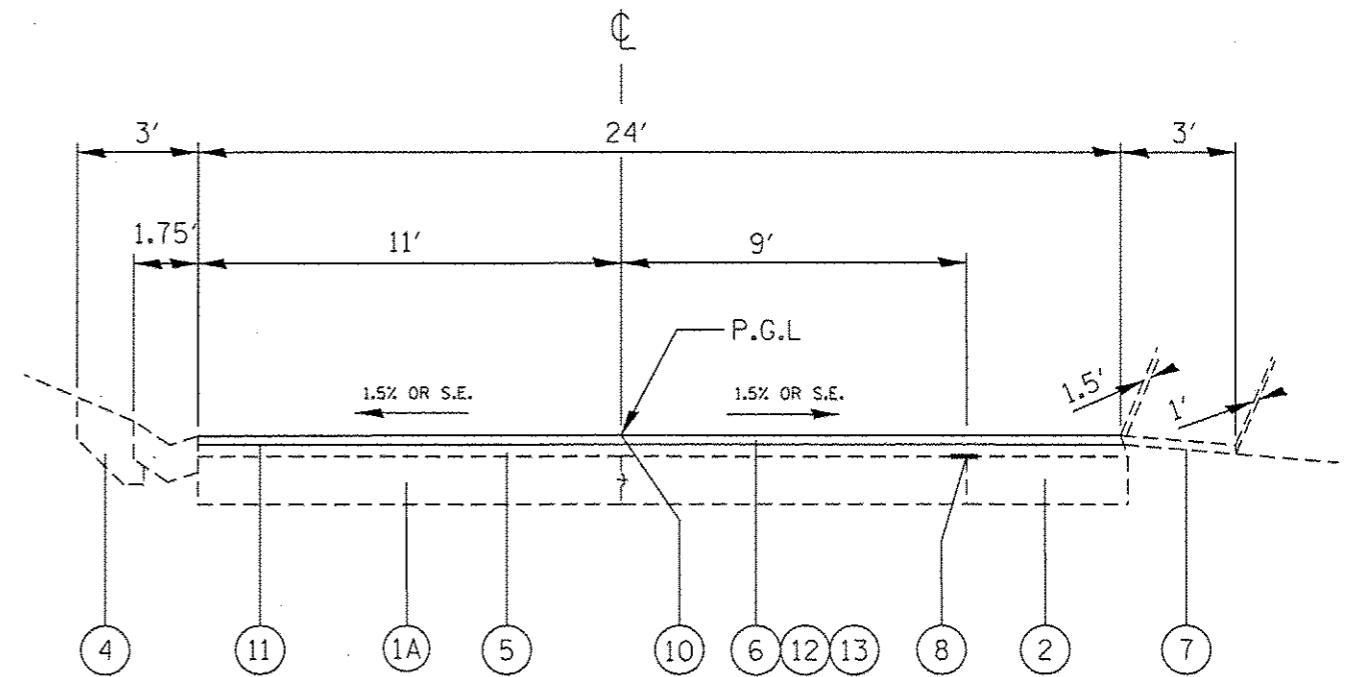
END PROJECT
296+22.00

| | | | | | | | | | | | | |
|--|------------------------------------|---------------------------|------------------------|---|---------------------------|--|---|----------------------------|--------------------|----------------------|-------------------|--|
| FILE NAME * c:\pwwork\pwwork\shahdm\0328096\05xxx | USER NAME * shahdm shahdm | DESIGNED - DRAWN - DMS | REVISED - REVISED - | STATE OF ILLINOIS DEPARTMENT OF TRANSPORTATION | PROJECT LOCATION | | F.A.P. RTE. 562 | SECTION (117) RS-8, I-1 | COUNTY SCOTT | TOTAL SHEETS 7 | SHEET NO. 5 | |
| PLOT SCALE * 40.0000 1/4 in. | | | | | | | SCALE: _____ SHEET _____ OF _____ SHEETS STA. _____ TO STA. _____ | | CONTRACT NO. 72F81 | | | |
| Default | PLOT DATE * Mar-27-2013 09:29:04AM | CHECKED - DATE - | REVISED - REVISED - | | ILLINOIS FED. AID PROJECT | | | | | | | |



STATIONS

STA 228+80 - STA 241+30
 STA 245+04 - STA 251+50.6
 STA 277+30 - STA 296+22



RAILROAD CROSSING OMISSION

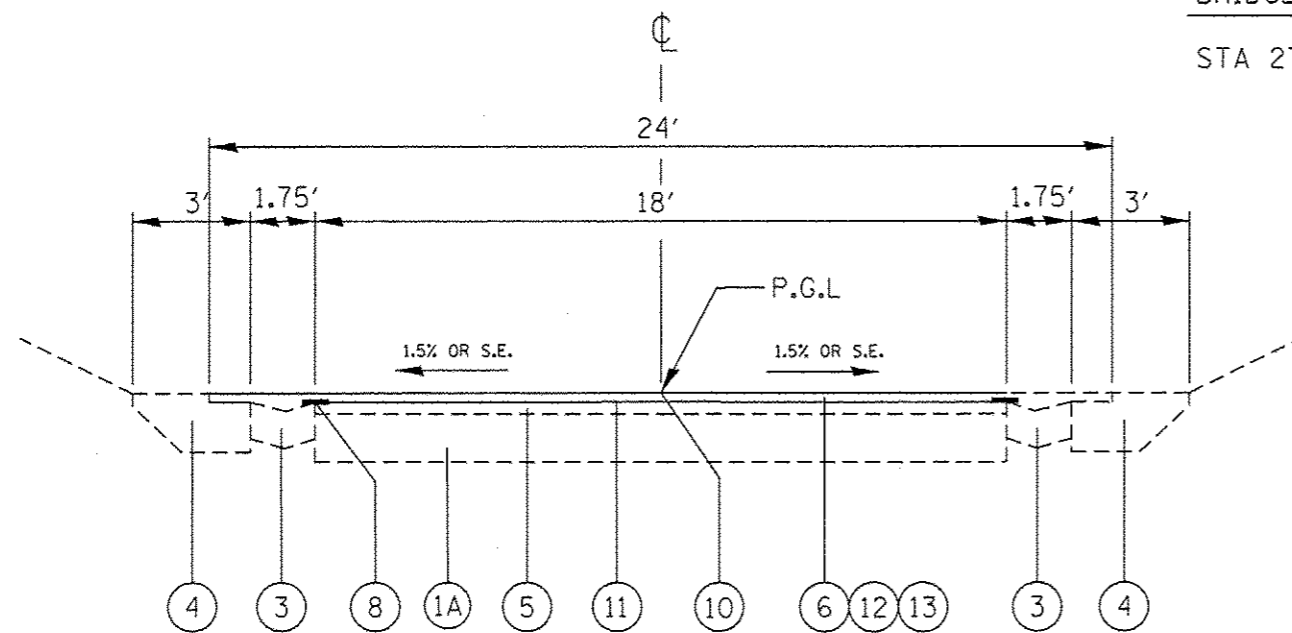
STA 267+66 - STA 267+75
 STA 268+41.7 - STA 268+50.7
 STA 268+60.25 - STA 268+59.25

STATIONS

STA 241+30 - STA 245+04

BRIDGE & APPROACH OMISSION

STA 274+30.96 - STA 275+73.64



STATIONS

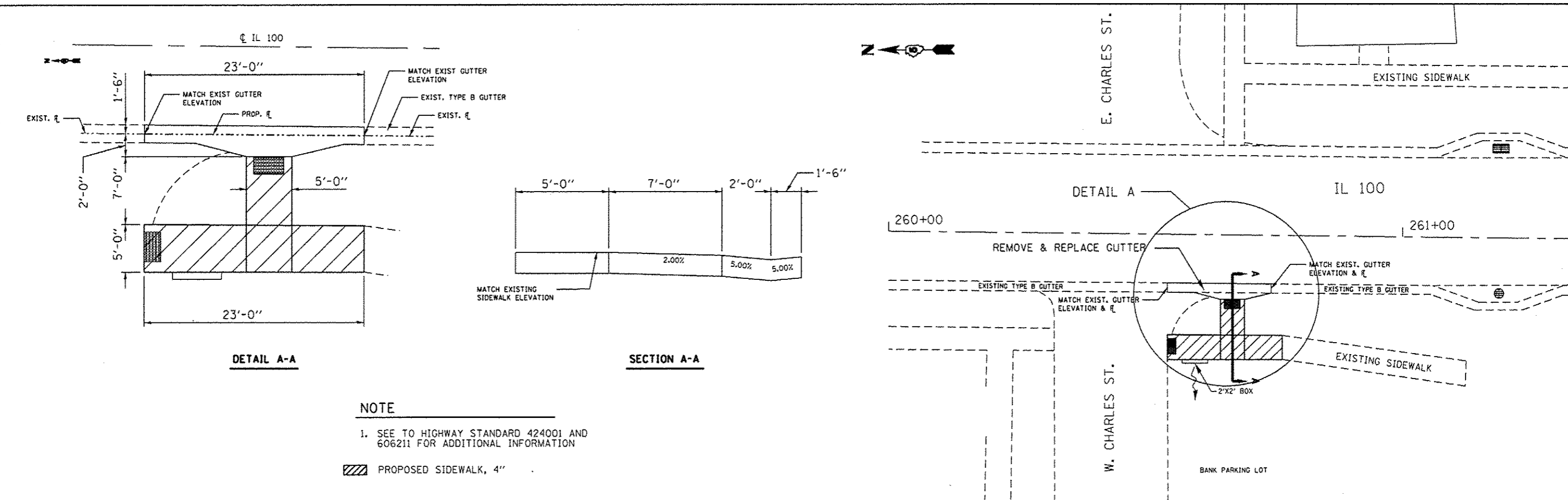
STA 251+50.6 - STA 277+30

LEGEND

1. EXIST. P.C.C. PAVEMENT 9-7-9"
- 1A. EXIST. P.C.C. PAVEMENT 8"
2. EXIST. BIT. CONC. WIDENING 8"
3. EXIST. CONC. GUTTER, TY B
4. EXIST. CONC. GUTTER, SPECIAL 9"
5. EXIST. BIT. CONC. OVERLAY 2"
6. EXIST. BIT. CONC. SURF. CSE., MIX. D, CL. I, TYPE 2 1 1/2"
7. EXIST. AGG. SHOULDER TY B
8. EXIST. STRIP REFL. CRACK CTRL. TREATMENT
9. PROP. PAINT PAVT. MKG. LINE 5"
10. PROP. RAISED REFLECTIVE PAVEMENT MARKERS
11. PROP. BIT. PRIME COAT
12. PROP. HMA SURFACE REMOVAL, 1 1/2"
13. PROP. BIT. CONC. SURF. CSE., 1 1/2"
14. PROP. AGG. SHOULDER

NOTE:
 NOT DRAWN TO SCALE

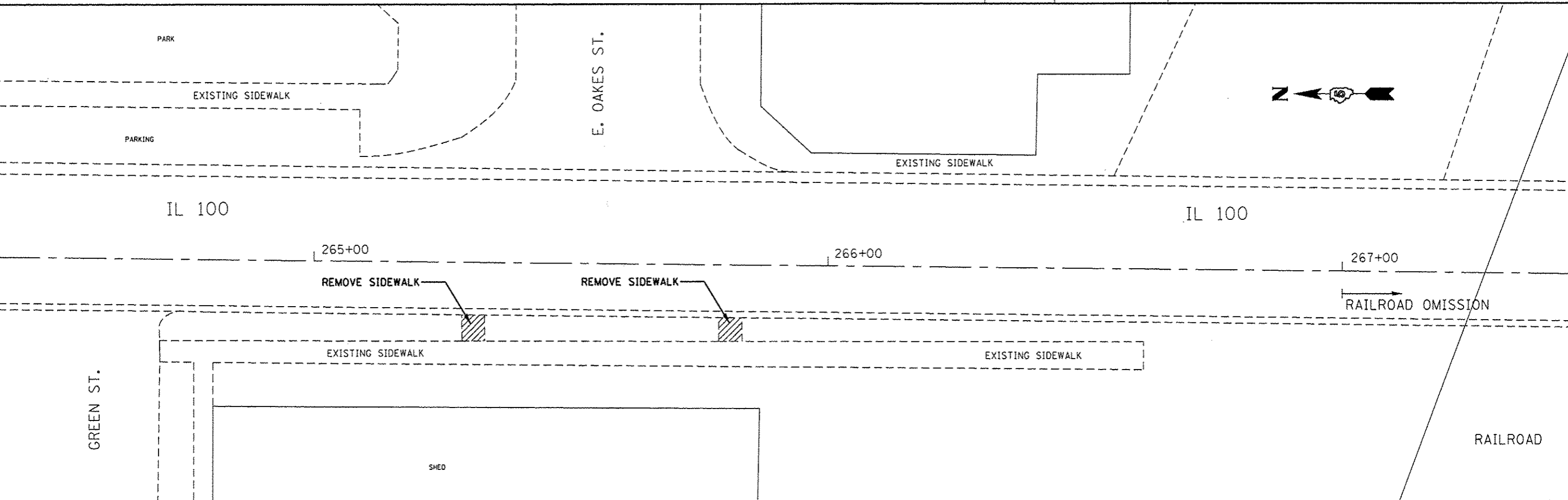
| | | | | | | | | | | | | |
|---|------------------------------------|------------|-----------|---|-------------------------|-------|----|-------------|-----------------|---------|---------------------------|-----------|
| FILE NAME * | USER NAME * shohde | DESIGNED - | REVISED - | STATE OF ILLINOIS DEPARTMENT OF TRANSPORTATION | TYPICAL SECTIONS | | | F.A.P. RTE. | SECTION | COUNTY | TOTAL SHEETS | SHEET NO. |
| ci:\pw_work\pwidot\shohde\032009\06xxx\shht-typical.dgn | DRAWN - DMS | REVISED - | REVISED - | | | | | 562 | (117) RS-8, 1-1 | SCOTT | 7 | 6 |
| PLOT SCALE * 40.0000 ' / in. | CHECKED - | REVISED - | REVISED - | | CONTRACT NO. 72F81 | | | | | | | |
| Default | PLOT DATE * Mar-27-2013 08:31:01AM | DATE - | REVISED - | | SCALE: | SHEET | OF | SHEETS | STA. | TO STA. | ILLINOIS FED. AID PROJECT | |



NOTE

1. SEE TO HIGHWAY STANDARD 424001 AND 606211 FOR ADDITIONAL INFORMATION

PROPOSED SIDEWALK, 4"



| | | | | | | | | | | | | | |
|-------------|-----------------------------------|----------------|-----------|---|--|-------|----|-------------|----------------|--------|--------------|-----------------------------|--|
| FILE NAME * | USER NAME * shahdn | DESIGNED - DMS | REVISED - | STATE OF ILLINOIS DEPARTMENT OF TRANSPORTATION | SIDEWALK PLAN VIEW & DETAIL | | | F.A.P. RTE. | SECTION | COUNTY | TOTAL SHEETS | SHEET NO. | |
| Default | Plot Date * 08/27/2013 08:35:48AM | DRAWN - DMS | REVISED - | | | | | 562 | (117)RS-8, I-1 | SCOTT | 7 | 7 | |
| | | CHECKED - | REVISED - | | SCALE: | SHEET | OF | SHEETS | STA. | TO | STA. | CONTRACT NO. 72F81 | |
| | | DATE - | REVISED - | | | | | | | | | [ILLINOIS] FED. AID PROJECT | |