

04-26-13 LETTING ITEM 077

STATE OF ILLINOIS
DEPARTMENT OF TRANSPORTATION
DIVISION OF HIGHWAYS

**PROPOSED
HIGHWAY PLANS**

FAP ROUTE 510 (IL 96)
SECTION (119) I-1
PROJECT HSIP-0510(038)
SHOULDER CONSTRUCTION &
MILLED RUMBLE STRIP
HANCOCK COUNTY

C-96-028-13

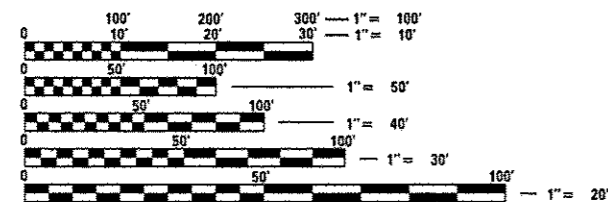
F.A.P. RTE.	SECTION	COUNTY	TOTAL SHEETS	SHEET NO.
510	(119) I-1	HANCOCK	9	1
		ILLINOIS	CONTRACT NO. 72F95	

INDEX OF SHEETS

1. COVER SHEET
2. GENERAL NOTES
3. SUMMARY OF QUANTITIES
4. SCHEDULE OF QUANTITIES
5. TYPICAL SECTIONS
6. PLAN SHEET
7. SHOULDER RUMBLE STRIP DETAIL
8. CENTERLINE RUMBLE STRIP DETAIL

ADT

1800 (2011)
PV 93%
MU+SU 7%

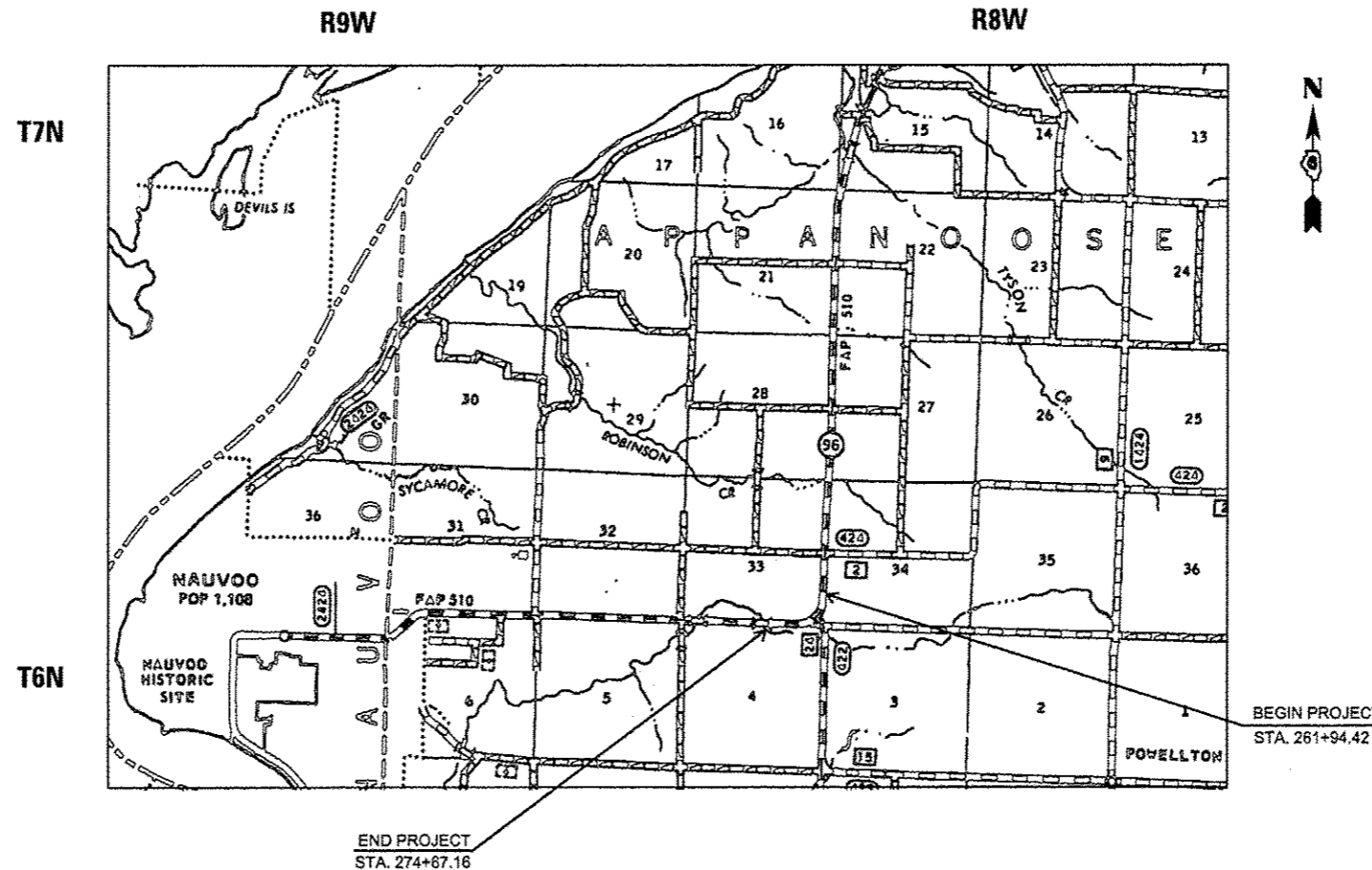


FULL SIZE PLANS HAVE BEEN PREPARED USING STANDARD ENGINEERING SCALES. REDUCED SIZED PLANS WILL NOT CONFORM TO STANDARD SCALES. IN MAKING MEASUREMENTS ON REDUCED PLANS, THE ABOVE SCALES MAY BE USED.

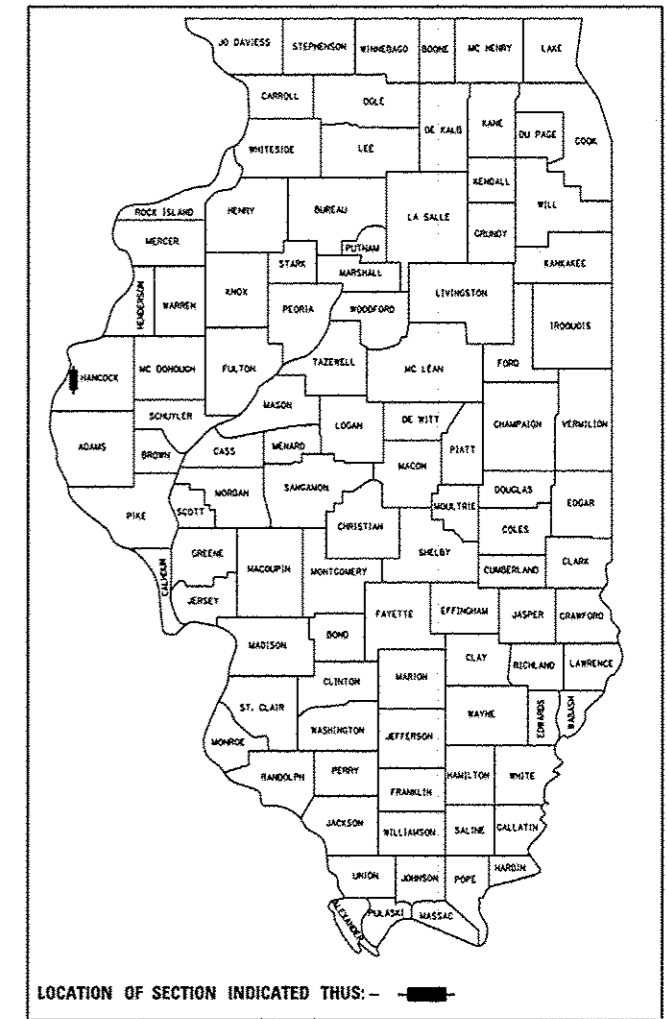
J.U.L.I.E.
JOINT UTILITY LOCATION INFORMATION FOR EXCAVATION
1-800-892-0123
OR 811

PROJECT ENGINEER: VINCE MADONIA (217) 785-9046
PROJECT MANAGER: JULIET SHOULTZ (217) 785-2739

CONTRACT NO. 72F95



GROSS LENGTH = 1056.00 FT. = 0.20 MILE
NET LENGTH = 1056.00 FT. = 0.20 MILE



STATE OF ILLINOIS
DEPARTMENT OF TRANSPORTATION
DIVISION OF HIGHWAYS

SUBMITTED February 1 20 13
Ryan J. Oriskany
DEPUTY DIRECTOR OF HIGHWAYS, REGION ENGINEER

March 22 20 13
John D. Baranzelli, P.E.
ENGINEER OF DESIGN AND ENVIRONMENT

March 22 20 13
Chris Osman, P.E.
DIRECTOR OF HIGHWAYS, CHIEF ENGINEER

**PRINTED BY THE AUTHORITY
OF THE STATE OF ILLINOIS**

11

ILLINOIS DEPARTMENT OF TRANSPORTATION				FAP 510 IL 96
CODE NO.	ITEM	UNIT	TOTAL QUANTITY	90% FEDERAL 10% STATE 0021
20200600	EXCAVATING AND GRADING EXISTING SHOULDER	UNIT	25	25
40600895	CONSTRUCTING TEST STRIP	EACH	1	1
40600982	HOT-MIX ASPHALT SURFACE REMOVAL - BUTT JOINT	SO YD	260	260
40600990	TEMPORARY RAMP	SO YD	116	116
40603310	HOT-MIX ASPHALT SURFACE COURSE, MIX "C", NS0	TON	336	336
48101200	AGGREGATE SHOULDERS, TYPE B	TON	74	74
48203023	HOT-MIX ASPHALT SHOULDERS, 6 1/2"	SO YD	868	868
48203100	HOT-MIX ASPHALT SHOULDERS	TON	74	74
64200108	SHOULDER RUMBLE STRIPS, 8 INCH	FOOT	2535	2535
67100100	MOBILIZATION	L SUM	1	1
70100460	TRAFFIC CONTROL AND PROTECTION, STANDARD 701306	L SUM	1	1
70100500	TRAFFIC CONTROL AND PROTECTION, STANDARD 701326	L SUM	1	1
* 78001120	PAINT PAVEMENT MARKING - LINE 5"	FOOT	5091	5091
* 78100100	RAISED REFLECTIVE PAVEMENT MARKER	EACH	32	32

*SPECIALTY ITEM

ILLINOIS DEPARTMENT OF TRANSPORTATION				FAP 510 IL 96
CODE NO.	ITEM	UNIT	TOTAL QUANTITY	90% FEDERAL 10% STATE 0021
78300200	RAISED REFLECTIVE PAVEMENT MARKER REMOVAL	EACH	32	32
X0326898	CENTER LINE - RUMBLE STRIP - 16"	FOOT	1263	1263
X4401198	HOT-MIX ASPHALT SURFACE REMOVAL, VARIABLE DEPTH	SO YD	4001	4001

3

FILE NAME =	USER NAME = sporkagu	DESIGNED -	REVISED -	STATE OF ILLINOIS DEPARTMENT OF TRANSPORTATION	SUMMARY OF QUANTITIES	F.A.P. RTE. 510	SECTION (119) I-1	COUNTY HANCOCK	TOTAL SHEETS 9	SHEET NO. 3	
c:\pwwork\sporkagu\sporkagu\08338462\067	F95-ahf-500.dgn	DRAWN -	REVISED -			SCALE:	SHEET 1	OF 1	SHEETS	STA.	TO STA.
Default	PLOT SCALE = 100.0000' / in.	CHECKED -	REVISED -			ILLINOIS FED. AID PROJECT					
	PLOT DATE = Feb-04-2013 12:02:58PM	DATE -	REVISED -			CONTRACT NO. 72F95					

HOT-MIX ASPHALT SHOULDER, 6 1/2"					
STATION RANGE			WIDTH	LENGTH	HMA SHLDR
			(FT)	(FT)	(SQ YD)
261+94	TO	274+67	3	1,303	868
TOTAL					868

HOT-MIX ASPHALT SHOULDERS					
STATION RANGE			WIDTH	LENGTH	
			(FT)	(FT)	(TON)
261+94	TO	274+67	3	1,303	74
TOTAL					74

EXCAVATING AND GRADING SHOULDERS					
STATION RANGE			LENGTH		
			(FT)	(UNIT)	
261+94	TO	274+67	1,273	25	
TOTAL					25

SHOULDER RUMBLE STRIPS, 8"					
STATION RANGE			LENGTH		
			(FT)		
261+94	TO	274+67	2,535		
TOTAL					2,535

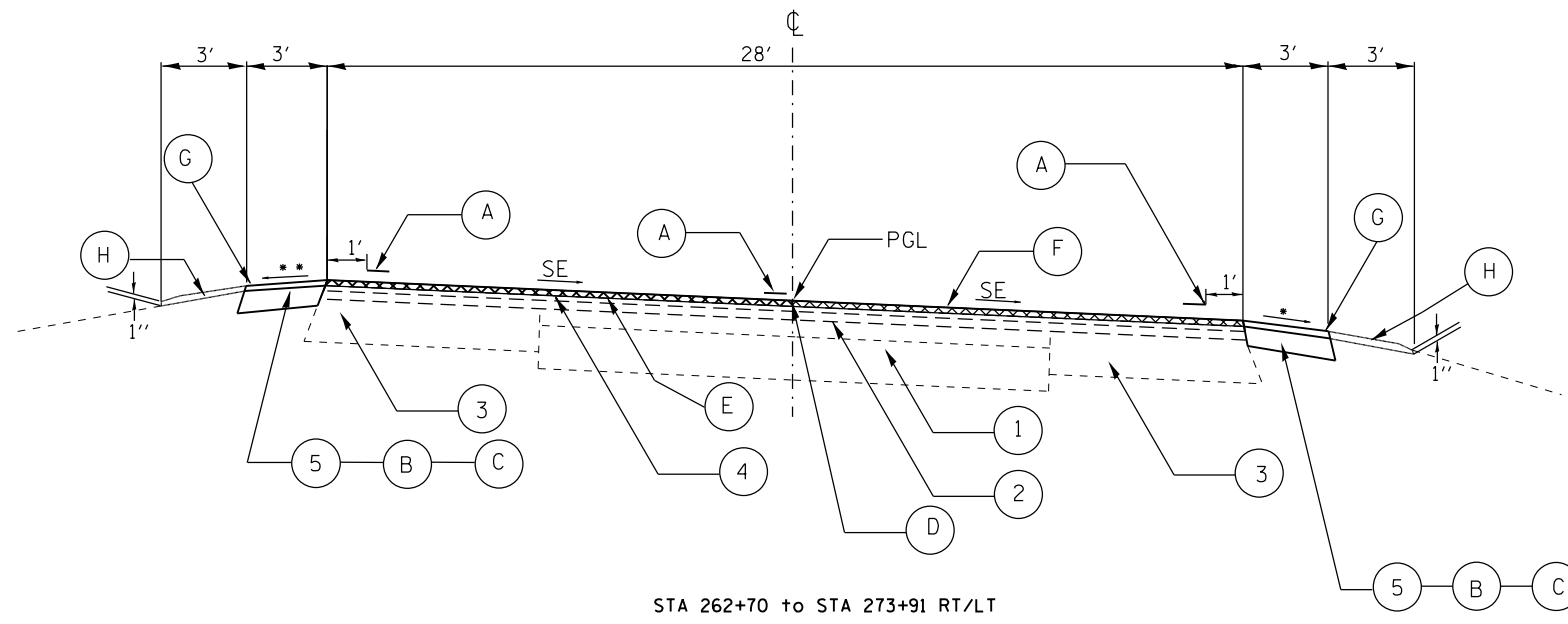
CENTERLINE RUMBLE STRIP - 16"					
STATION RANGE			LENGTH		
			(FT)		
261+94	TO	274+67	1,263		
TOTAL					1,263

PAINT PAVEMENT MARKING LINE 5"					
STATION RANGE			LENGTH		
			(FT)		
261+94	TO	274+67	5,091		
TOTAL					5,091

RAISED REFLECTIVE PAVEMENT MARKING					
STATION RANGE			QUANTITY		
			(EACH)		
261+94	TO	274+67	32		
TOTAL					32

RESURFACING									
STATION RANGE			PAV'T WIDTH	PAV'T LENGTH	PAV'T AREA	HMA SURF REMOVAL	HMA SURFACE	BUTT JOINT	TEMP RAMPS
			(FT)	(FT)	(SY)	(SY)	(TON)	(SY)	(SY)
261+94	TO	262+70	26	76	218	218	18	87	39
262+70	TO	273+91	28	1,121	3488	3488	293	--	--
273+91	TO	274+67	26	76	220	220	18	87	39
Connable Rd					75	75	6	87	39
TOTAL				1,273	4,001	4,001	336	260	116

AGGREGATE SHOULDERS, TYPE B					
STATION RANGE			WIDTH	LENGTH	AGG SHLDR
			(FT)	(FT)	(TON)
261+94	TO	274+67	3	1,303	74
TOTAL					74



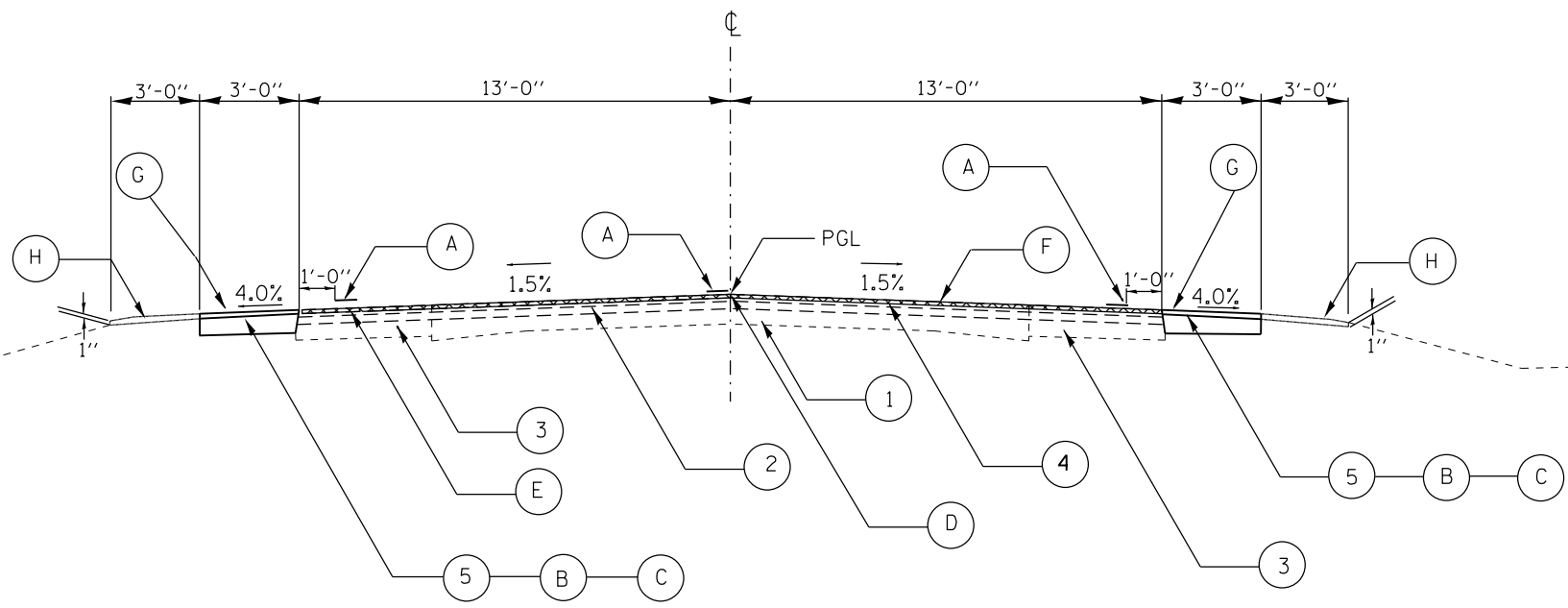
STA 262+70 to STA 273+91 RT/LT

EXISTING LEGEND

- ① EXISTING 9-6-9 PCC PAVEMENT
- ② EXISTING BITUMINOUS OVERLAY - 3 1/2" AND VARIES
- ③ EXISTING BITUMINOUS WIDENING - 9"
- ④ EXISTING BITUMINOUS CONCRETE SURFACE COURSE, SUPERPAVE, N50 (1 1/2")
- ⑤ EXISTING AGGREGATE SHOULDERS, TYPE B, WEDGE

PROPOSED LEGEND

- Ⓐ PROPOSED PAINT PAVEMENT MARKING LINE 5"
- Ⓑ PROPOSED SHOULDER RUMBLE STRIP, 8"
- Ⓒ PROPOSED HMA SHOULDER 6 1/2"
- Ⓓ PROPOSED CENTER LINE RUMBLE STRIP, 16"
- Ⓔ PROPOSED HMA SURFACE REMOVAL 1 1/2"
- Ⓕ PROPOSED HMA SURFACE COURSE, N50 (1 1/2")
- Ⓖ PROPOSED HMA SHOULDER (1 1/2")
- Ⓗ PROPOSED AGGREGATE SHOULDER, TYPE B



STA 261+94.42 to STA 262+70 RT/LT
STA 273+91 to STA 274+67.16 RT/LT

* LOW SIDE OF SE - SHLD. SHALL BE SLOPED THE SAME AS SE OF PAV'T, BUT NO LESS THAN 4%

** HIGH SIDE OF SE - WHEN SE OF PAV'T IS BETWEEN 0% AND 4%, THE SHLD. SHALL BE SLOPED AT 4%. WHEN THE SE OF PAV'T EXCEEDS 4%, THE SHLD. SHALL BE SLOPED SO THE ALGEBRAIC DIFFERENCE BETWEEN PAV'T AND SHLD. SLOPES WILL NOT BE GREATER THAN 8%.

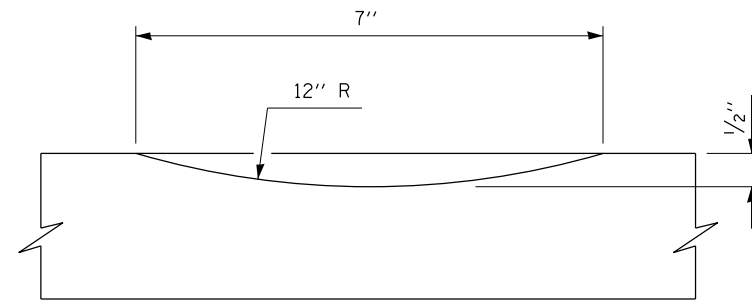
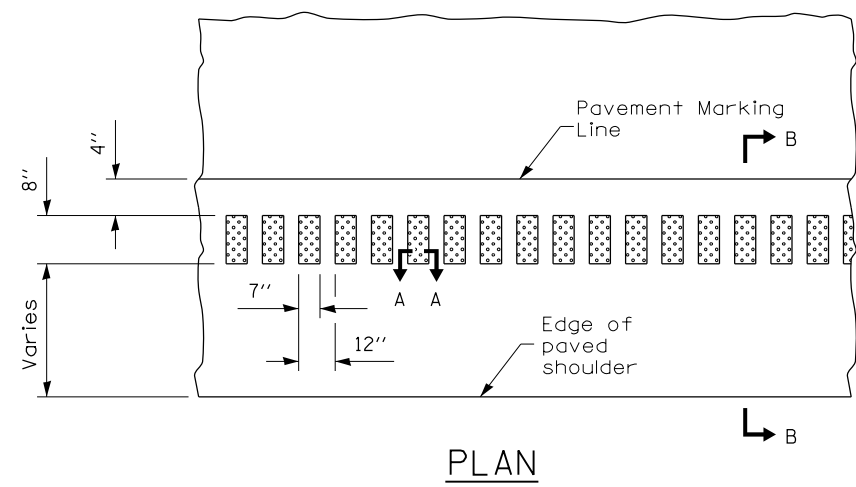


FILE NAME =	USER NAME = sparksgw	DESIGNED -	REVISED -
c:\pwwork\pwwork\sparksgw\10330462\0672	PF95-sht-plansht.dgn	DRAWN -	REVISED -
Default	PLOT SCALE = 100.0000' / in.	CHECKED -	REVISED -
	PLOT DATE = Feb-04-2013 12:20:58PM	DATE -	REVISED -

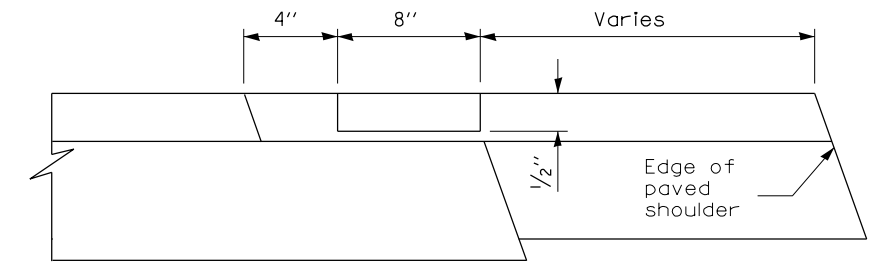
**STATE OF ILLINOIS
DEPARTMENT OF TRANSPORTATION**

PLAN SHEET			
SCALE:	SHEET 1	OF 1	SHEETS
	STA.	TO STA.	

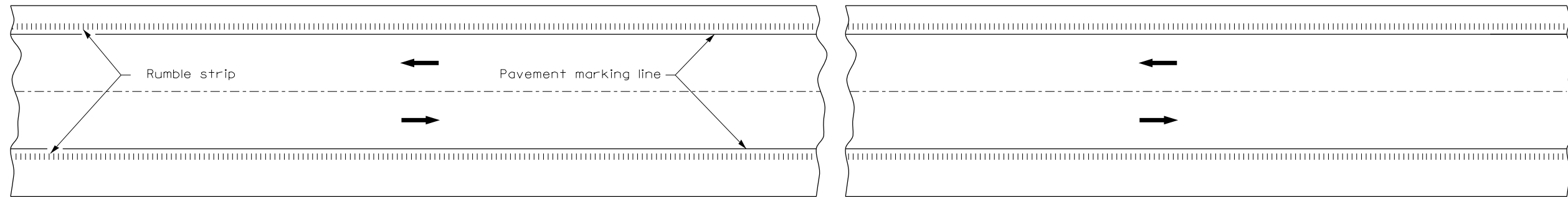
F.A.P. RTE.	SECTION	COUNTY	TOTAL SHEETS	SHEET NO.
510	(119) I-1	HANCOCK	9	6
CONTRACT NO. 72F95			ILLINOIS FED. AID PROJECT	



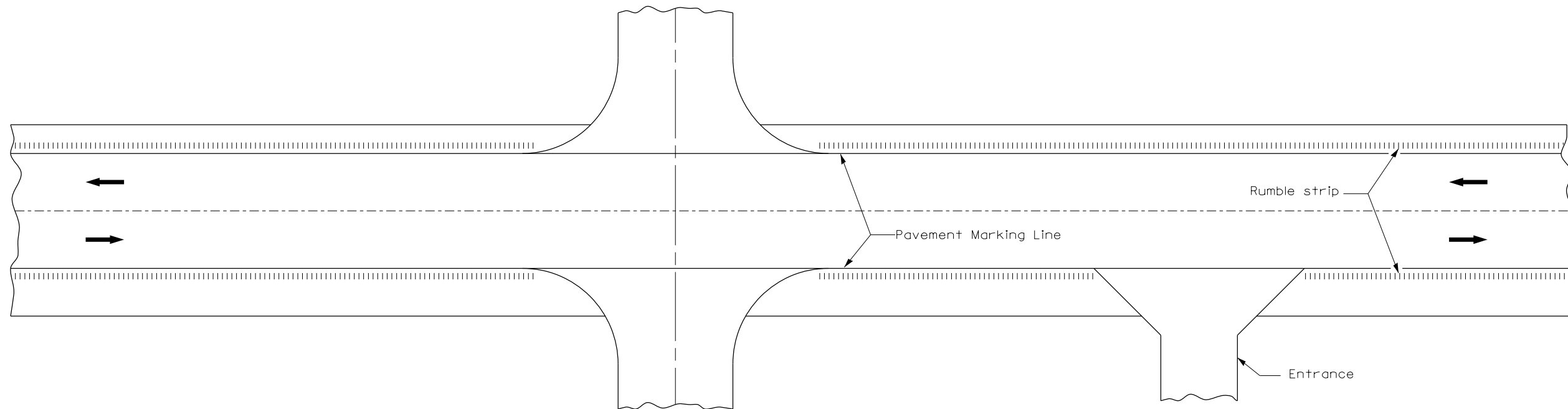
SECTION A-A



SECTION B-B

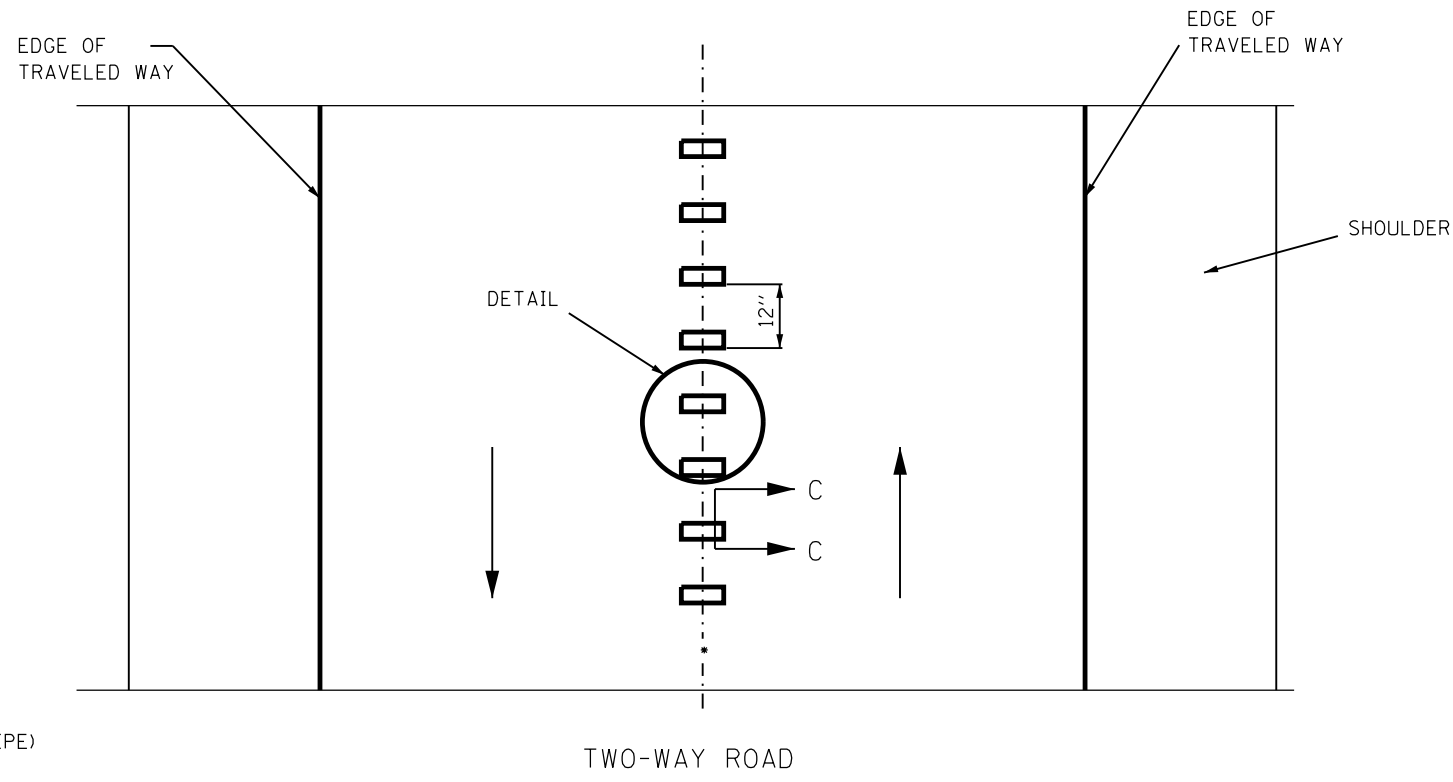
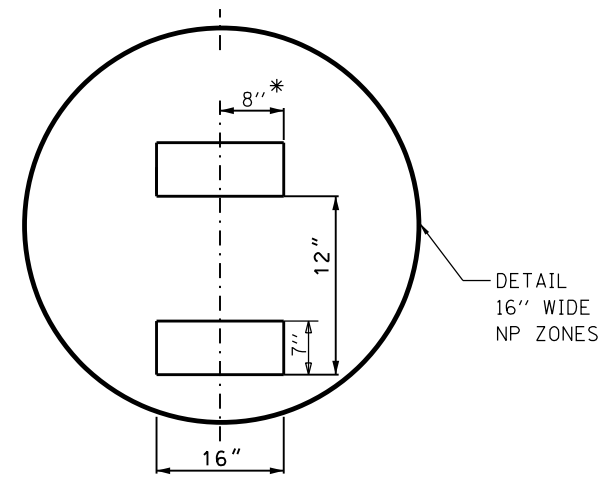
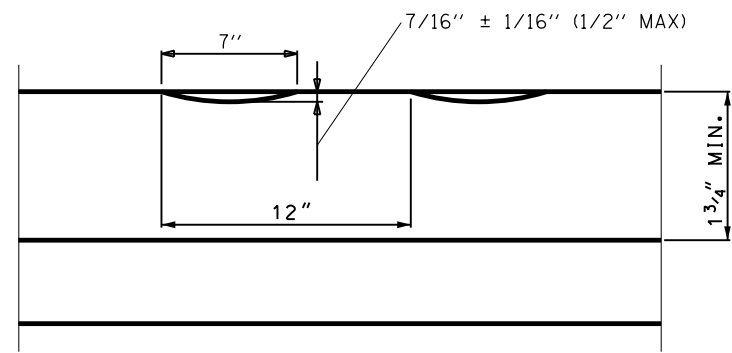
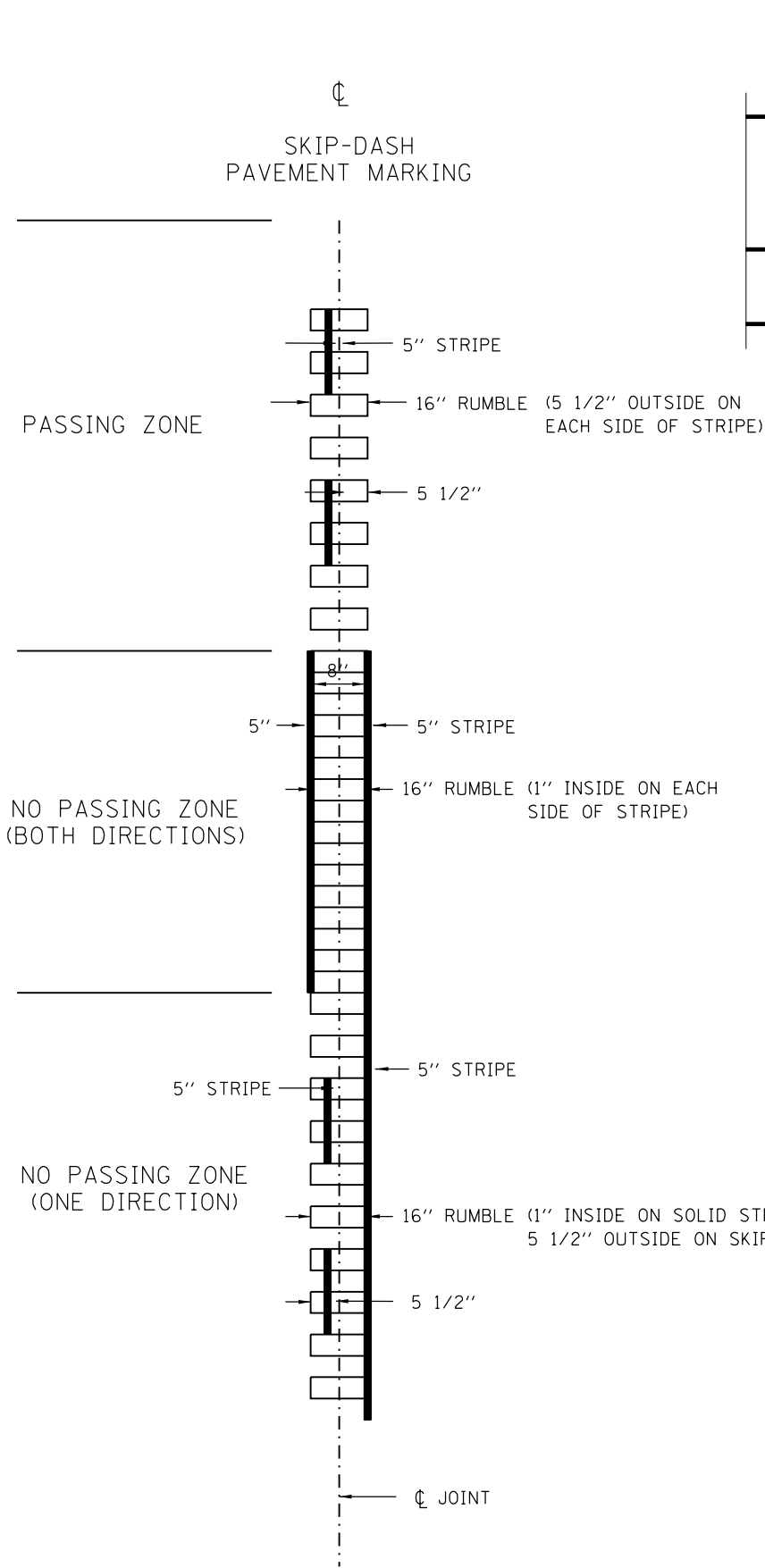


HALF PLAN
TYPICAL APPLICATION FOR RURAL AREAS



HALF PLAN
TYPICAL APPLICATION AT SIDEROADS AND ENTRANCES

FILE NAME = c:\pwork\work\pwork\sparksgw\0330462\0672F95-sht-details.dgn	USER NAME = sparksgw	DESIGNED -	REVISED -	STATE OF ILLINOIS DEPARTMENT OF TRANSPORTATION	SHOULDER RUMBLE STRIP DETAIL			F.A.P. RTE.	SECTION	COUNTY	TOTAL SHEETS	SHEET NO.
RUMBLE.DGN	PLOT SCALE = 40.0000' / in.	DRAWN -	REVISED -					510	(1191-1)	HANCOCK	9	7
	PLOT DATE = Feb-04-2013 12:21:09PM	CHECKED -	REVISED -		SCALE: SHEET NO. OF SHEETS STA. TO STA.			CONTRACT NO. 72F95				
		DATE -	REVISED -		FED. ROAD DIST. NO. ILLINOIS FED. AID PROJECT							

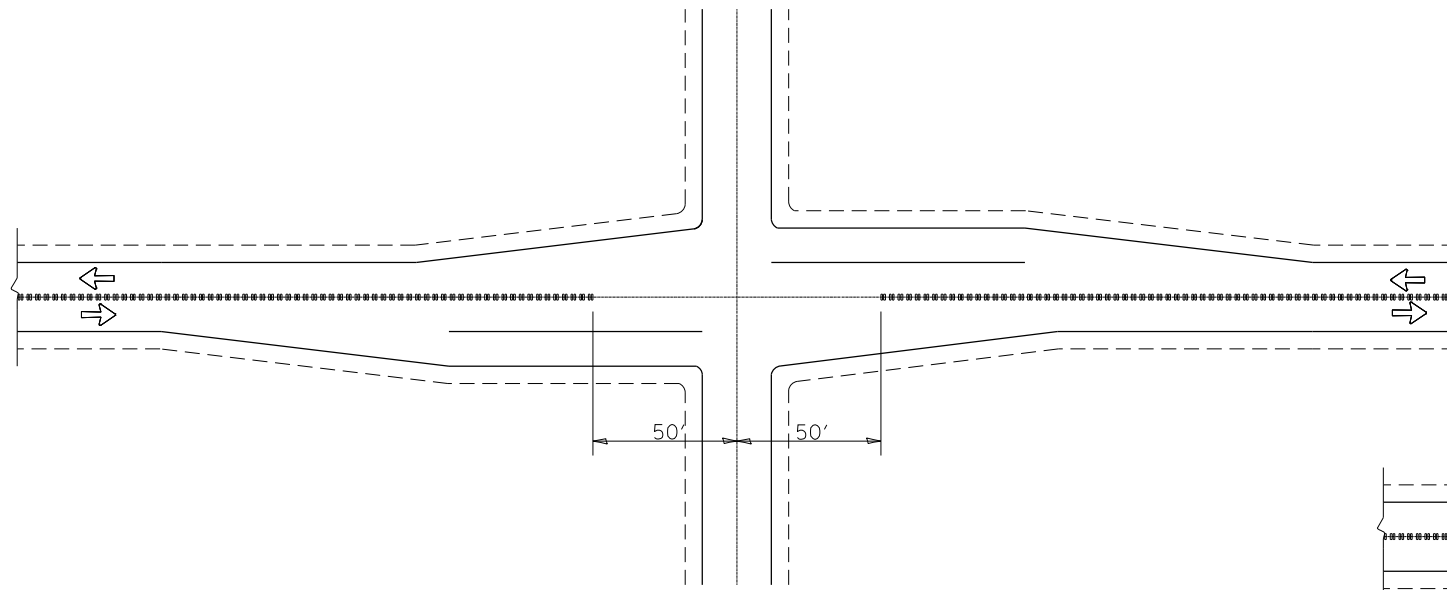


* = LATERAL DEVIATION SHALL NOT EXCEED ONE INCH IN 100 FEET.

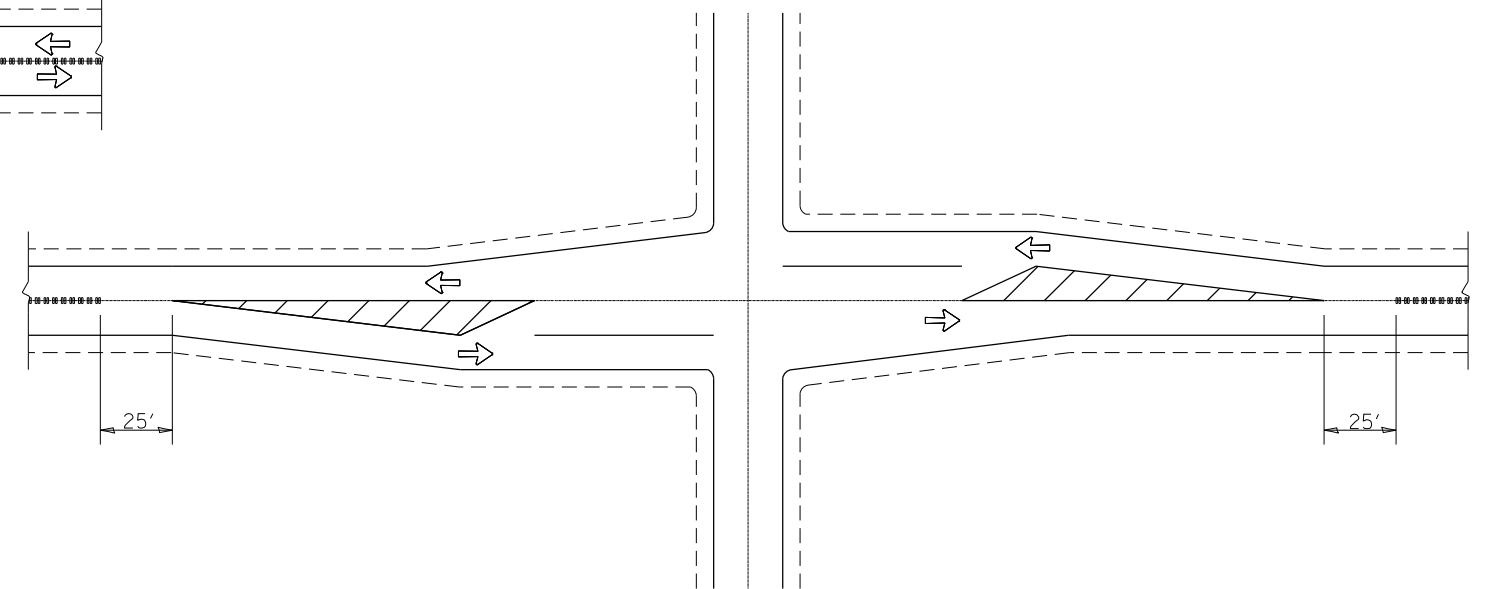
GENERAL NOTES:

- SKIP OVER EXISTING (4' GAP, 2' ON EACH SIDE) RAISED REFLECTIVE PAVEMENT MARKERS
- RUMBLE STRIPS SHALL NOT BE PLACED ON BRIDGES.
- ALL RUMBLE STRIPS SHALL BE MILLED.
- CENTERLINE RUMBLE STRIPS SHALL NOT BE CONTINUOUS THROUGH CONNECTIONS OF SIDEROADS WITH NO LEFT TURN LANES.
- DISCONTINUE CENTERLINE RUMBLE STRIPS THROUGH THE LIMITS OF ALL LEFT TURN LANES, INCLUDING ANY LANE TAPER SECTIONS.

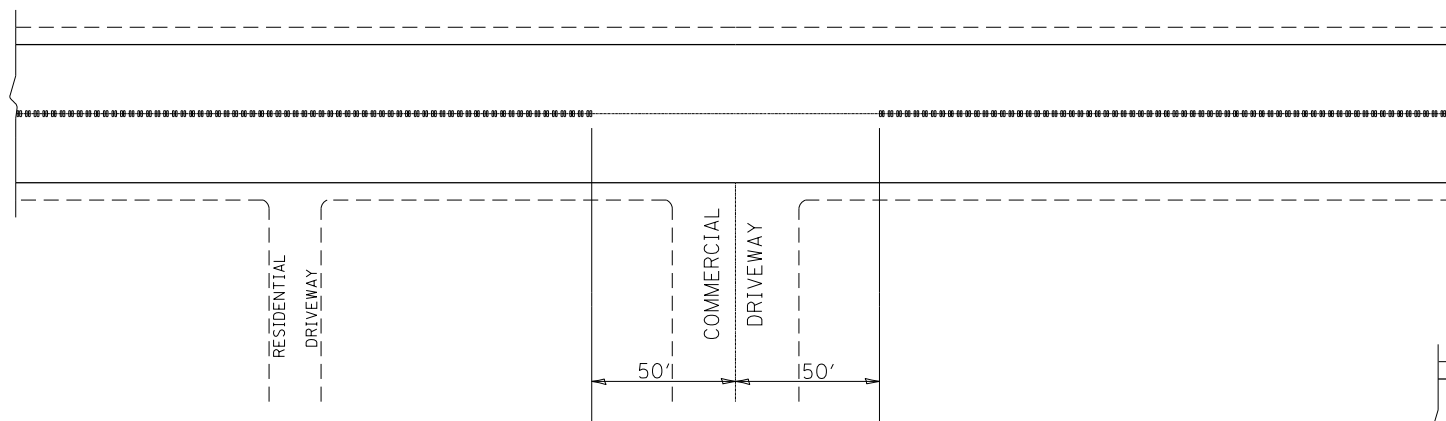
FILE NAME =	USER NAME = sparksgw	DESIGNED -	REVISED -	STATE OF ILLINOIS DEPARTMENT OF TRANSPORTATION	CENTER LINE RUMBLE STRIP DETAIL		F.A.P. RTE.	SECTION	COUNTY	TOTAL SHEETS	SHEET NO.	
Default	ei:\pw\work\p\idot\sparksgw\10330462\0672\F95-sht-centerline_rumble.dgn	DRAWN -	REVISED -		SCALE:	SHEET 1 OF 2 SHEETS	STA.	510	(119) I-1	HANCOCK	9	8
	PLOT SCALE = 200.0000' / in.	CHECKED -	REVISED -					CONTRACT NO. 72F95				
	PLOT DATE = Feb-04-2013 12:19:19PM	DATE -	REVISED -					ILLINOIS FED. AID PROJECT				



CENTER LINE GROOVES AT INTERSECTIONS

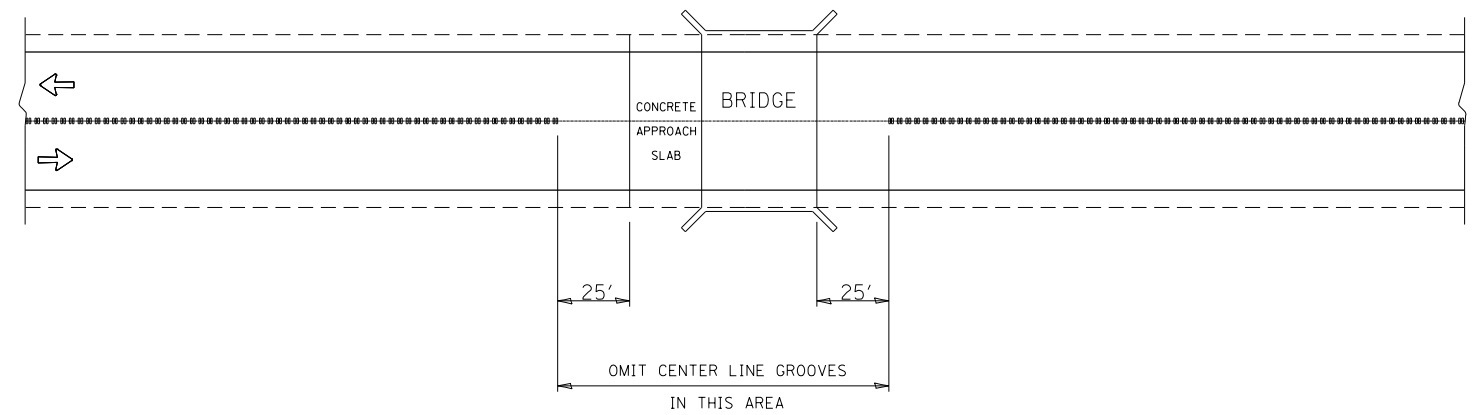


CENTER LINE GROOVES AT INTERSECTIONS
(WITH LEFT TURN LANES)



CENTER LINE GROOVES AT DRIVEWAYS ①

① CENTERLINE GROOVES MAY BE OMITTED IN AREAS WITH HIGH CONCENTRATIONS OF DRIVEWAYS, WHEN DIRECTED BY THE ENGINEER.



CENTER LINE GROOVES AT BRIDGES

FILE NAME =	USER NAME = sparksgw	DESIGNED -	REVISED -
ei:\pw\work\pwidot\sparksgw\10330462\0672\F95-shr-centerline_rumble.dgn		DRAWN -	REVISED -
Default	PLOT SCALE = 200.0000' / in.	CHECKED -	REVISED -
	PLOT DATE = Feb-04-2013 12:19:48PM	DATE -	REVISED -

STATE OF ILLINOIS
DEPARTMENT OF TRANSPORTATION

CENTER LINE RUMBLE
STRIP DETAIL

SCALE: SHEET 2 OF 2 SHEETS STA. TO STA.

F.A.P. RTE.	SECTION	COUNTY	TOTAL SHEETS	SHEET NO.
510	(119) I-1	HANCOCK	9	9
CONTRACT NO.			72F95	
ILLINOIS FED. AID PROJECT				