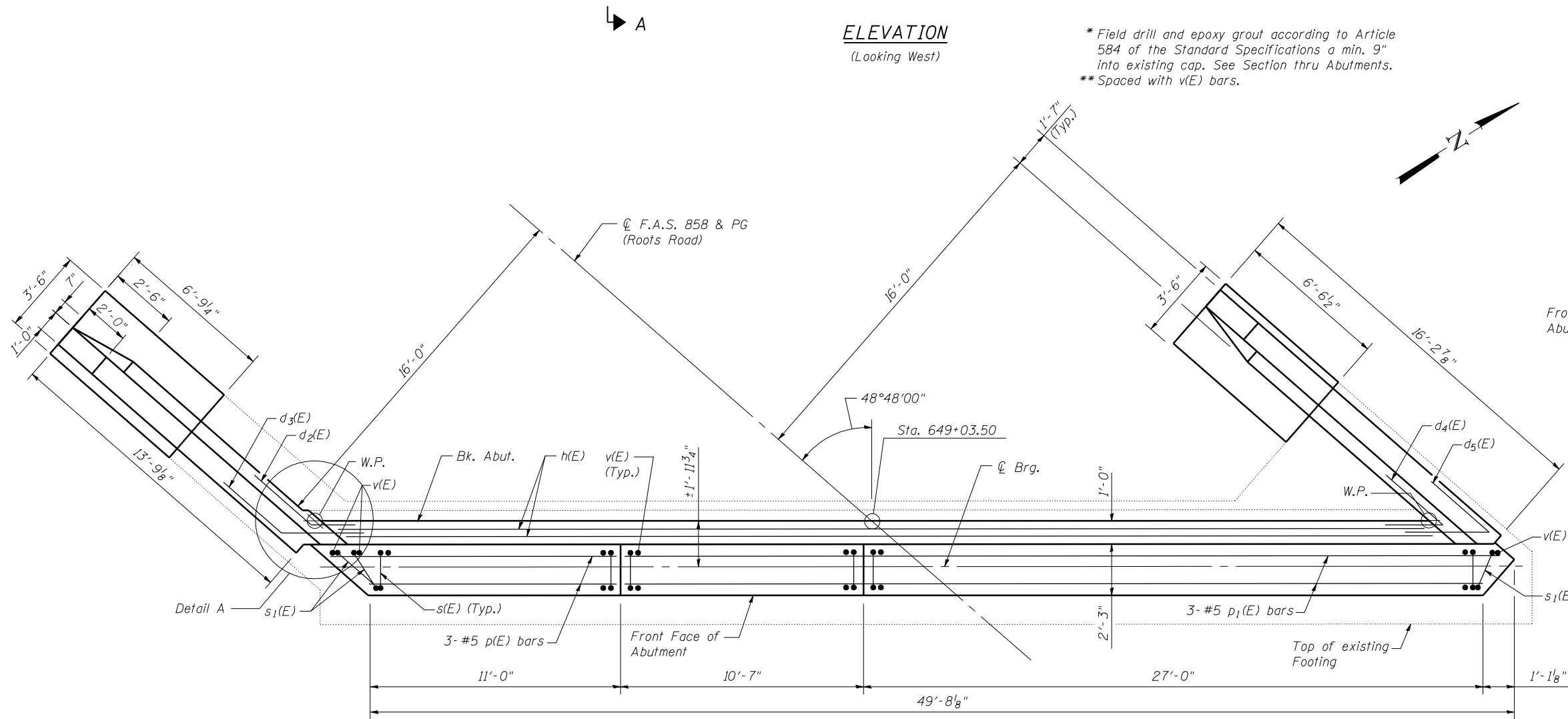


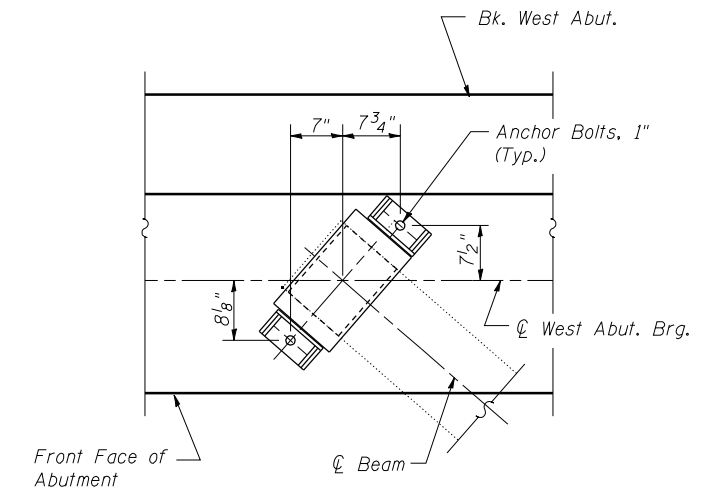
DETAIL A

ELEVATION
(Looking West)

* Field drill and epoxy grout according to Article 584 of the Standard Specifications a min. 9" into existing cap. See Section thru Abutments.
** Spaced with v(E) bars.



PLAN



**ANCHOR BOLT DETAIL
WEST ABUTMENT**

Notes:
Cut p(E) and p₁(E) bars to fit with 2" clear.
For Section A-A, Bar Bends and Bill of Material see sheet 20 of 26.
Hatched area quantity of concrete included with Concrete Superstructure.
Space reinforcement to miss Anchor Bolts.
Bars shall be drilled and grouted according to Section 584 of the Standard Specifications.
See sheet 19 of 26 for Wing Wall Details.

| | | | |
|---|--|---------------|-----------|
| FILE NAME = \sheet 16 (W Abut dt)1.dgn | USER NAME = bselbel | DESIGNED - BB | REVISED - |
| BERNHARDT LOGGEMULLER & ASSOCIATES, INC. 3 OAK DRIVE MARTINEVILLE, ILLINOIS 62458 PHONE (618) 298-4000 FAX (618) 298-4000 | Illinois Design Firm Number 184,001670 | CHECKED - ACS | REVISED - |
| PLOT SCALE = | | DRAWN - WJS | REVISED - |
| PLOT DATE = 11:09 PM 12/20/2011 | | CHECKED - CJF | REVISED - |

**STATE OF ILLINOIS
DEPARTMENT OF TRANSPORTATION**

**WEST ABUTMENT
STRUCTURE NO. 079-0020**

SHEET NO. 16 OF 26 SHEETS

| | | | | |
|--------------------|---------|----------|--------------|-----------|
| F.A.S. RTE. | SECTION | COUNTY | TOTAL SHEETS | SHEET NO. |
| 858 | 12VB-11 | RANDOLPH | 72 | 62 |
| CONTRACT NO. 76409 | | | | |

ILLINOIS FED. AID PROJECT