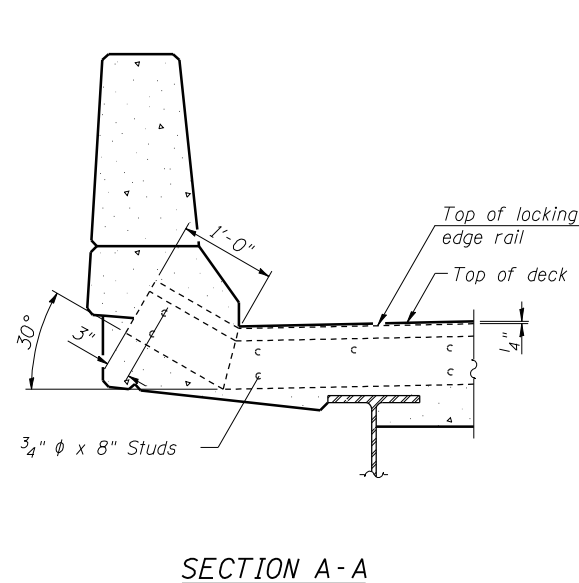
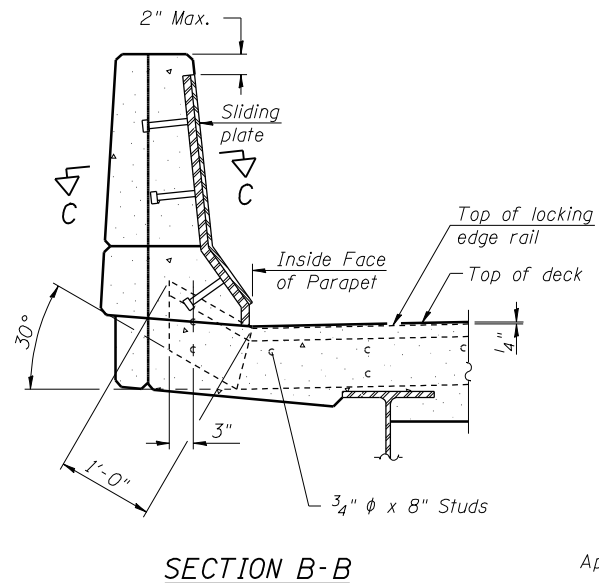


TYPICAL END TREATMENT AT SIDEWALK OR MEDIAN

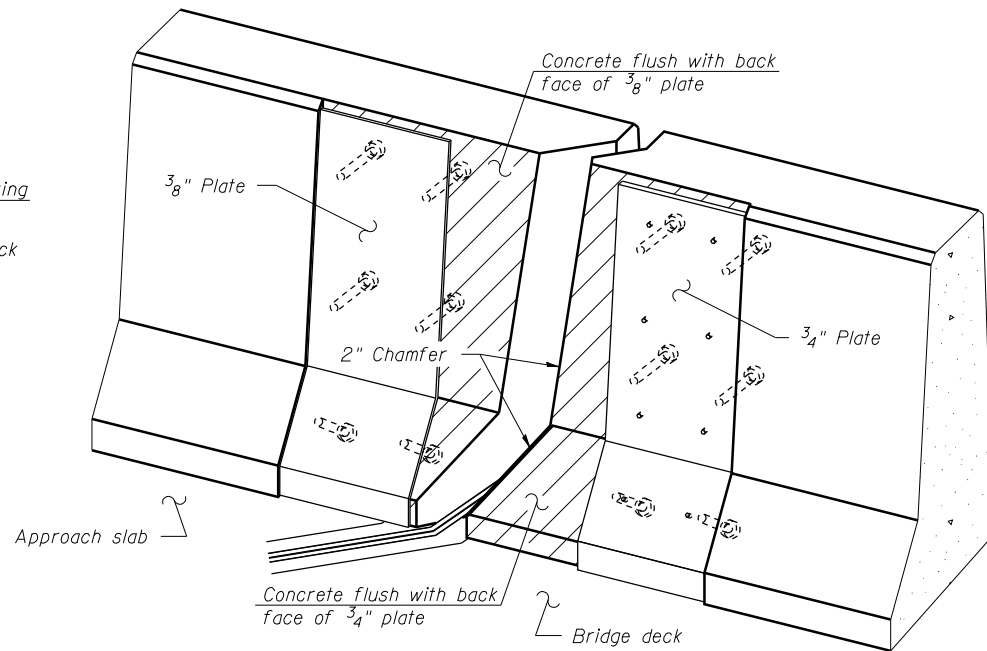
Shorter plates with a single row of studs at 12" cts. may be necessary on medians which are shallower than 9". See manufacturer's recommendation.



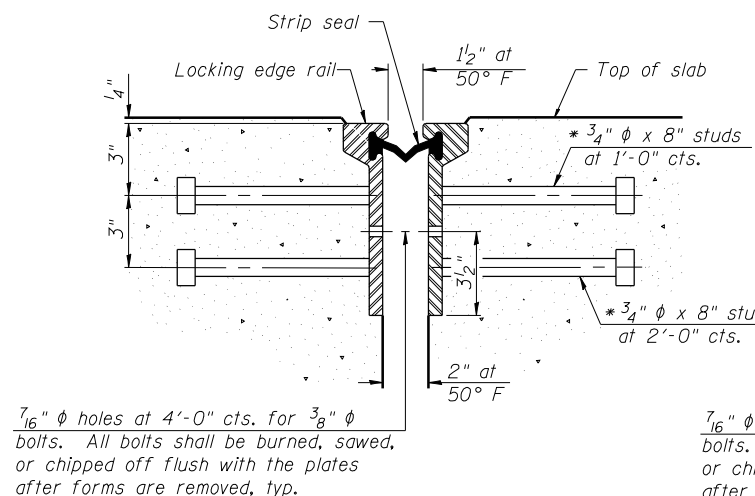
SECTION A-A



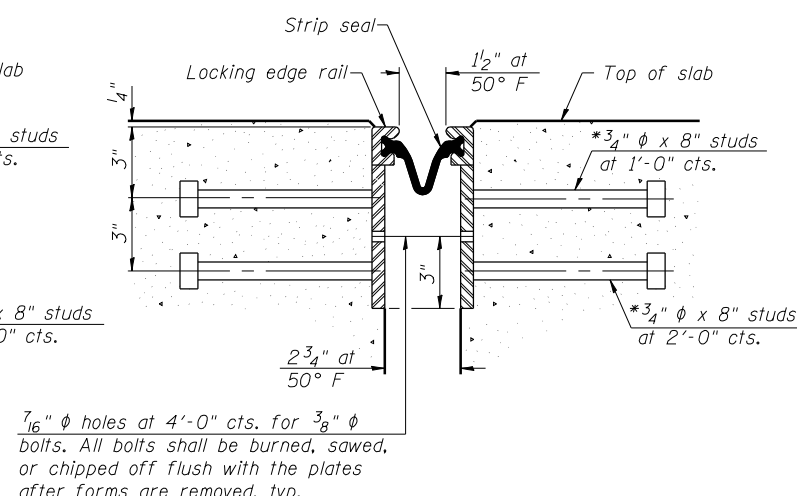
SECTION B-B



TRIMETRIC VIEW (Showing back plates only)



SECTION THRU ROLLED RAIL JOINT



SECTION THRU WELDED RAIL JOINT

ROLLED EXTRUDED RAIL

WELDED RAIL

LOCKING EDGE RAIL SPLICE

The inside of the locking edge rail groove shall be free of weld residue. Rolled rail shown, welded rail similar.

**Back gouge not required if complete joint penetration is verified by mock-up.

7/16" phi holes at 4'-0" cts. for 3/8" phi bolts. All bolts shall be burned, sawed, or chipped off flush with the plates after forms are removed, typ.

7/16" phi holes at 4'-0" cts. for 3/8" phi bolts. All bolts shall be burned, sawed, or chipped off flush with the plates after forms are removed, typ.

* Granular or solid flux filled headed studs conforming to Article 1006.32 of the Std. Specs., automatically end welded.

LOCKING EDGE RAILS

BILL OF MATERIAL

Item	Unit	Total
Preformed Joint Strip Seal	Foot	102

EJ-SSJ

7-1-10

FILE NAME = \sheet 24 (pss)ldgn

USER NAME = bselbel

DESIGNED -

REVISED -

Illinois Design Firm Number 184.001670

CHECKED -

REVISED -

PLOT SCALE =

DRAWN - WJS

REVISED -

PLOT DATE = 11/4/11 PM 12/20/2011

CHECKED - CJF

REVISED -

**STATE OF ILLINOIS
DEPARTMENT OF TRANSPORTATION**

**PREFORMED JOINT STRIP SEAL
STRUCTURE NO. 079-0020**

SHEET NO. 24 OF 26 SHEETS

F.A.S. RTE.	SECTION	COUNTY	TOTAL SHEETS	SHEET NO.
858	12VB-II	RANDOLPH	72	70
				CONTRACT NO. 76409

ILLINOIS FED. AID PROJECT