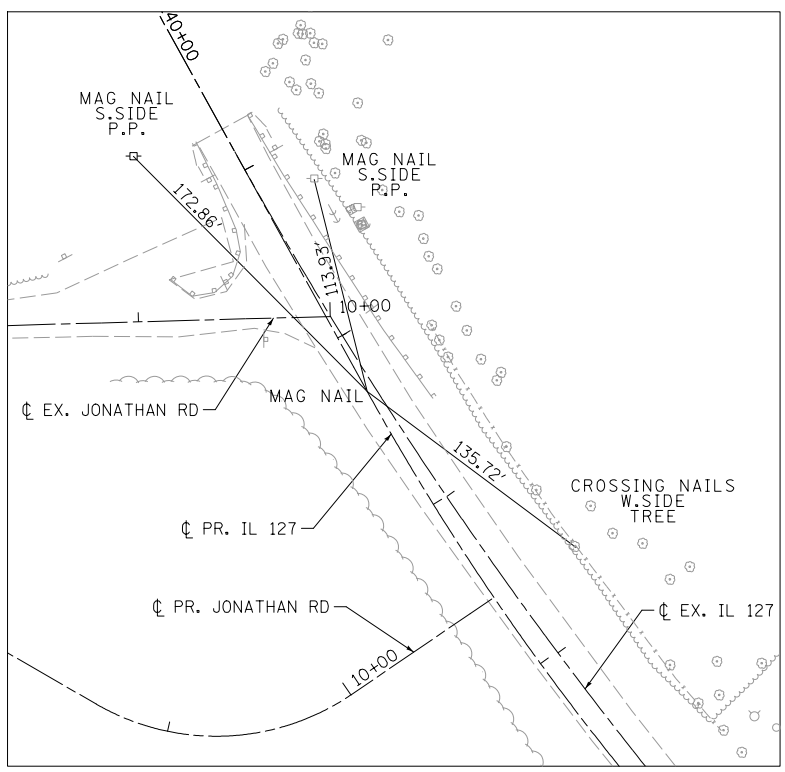


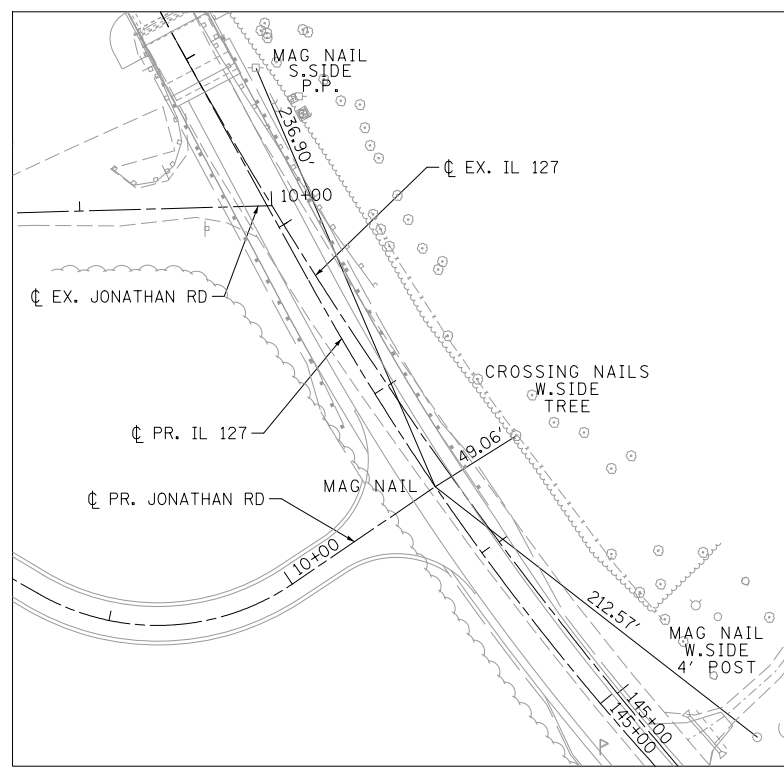
PROP. CURVE F1
PI STA. = 144+37.28
$\Delta = 17^\circ 18' 17''$ (LT)
D = 4° 14' 39"
R = 1,350.00'
T = 205.43'
L = 407.74'
E = 15.54'
e = 6%
T.R. = 54'
S.E. RUN = 160'
P.C. STA. = 142+31.85
P.T. STA. = 146+39.59

EXIST. CURVE C2
PI STA. = 144+37.29
$\Delta = 17^\circ 18' 17''$ (LT)
D = 2° 30' 11"
R = 2,289.08'
T = 348.33'
L = 691.36'
E = 26.35'
e = -----
T.R. = -----
S.E. RUN = -----
P.C. STA. = 140+88.95
P.T. STA. = 147+80.32

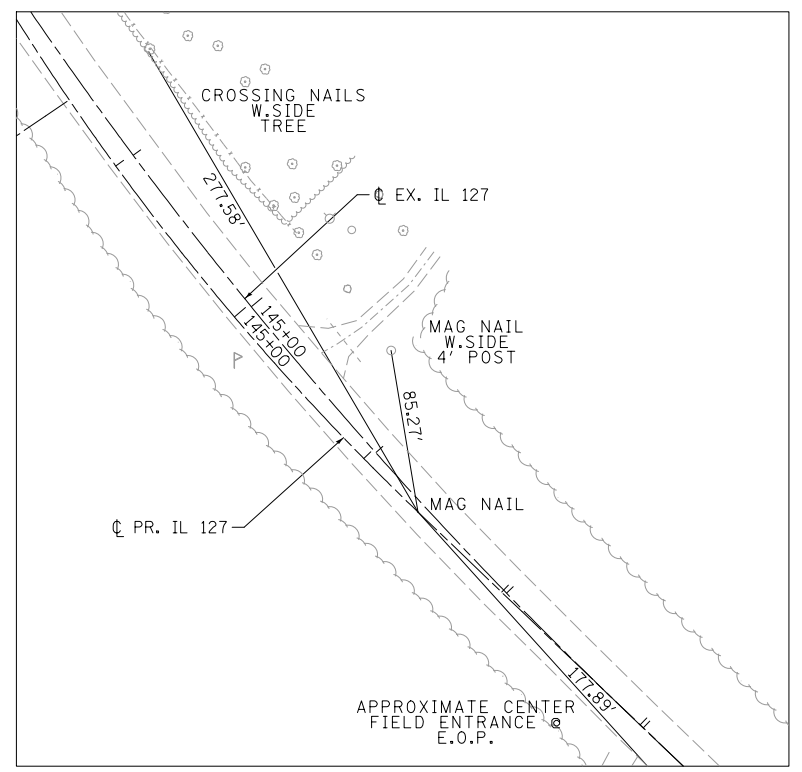
- BM1**
 RR SPIKE IN POWER POLE
 @ EAST SIDE OF IL 127
 ACROSS FROM OAKWOOD RD
 STA. 115+34 44' RT ELEV. 425.139
- BM2**
 CUT "O" ON PARAPET WALL END
 @ NW CORNER OF IL 127 BRIDGE
 OVER KASKASKIA RIVER - SN 014-0014
 STA. 129+35 19' RT ELEV. 436.775
- BM3**
 CUT "O" ON PARAPET WALL END
 @ SW CORNER OF IL 127 BRIDGE
 OVER KASKASKIA RIVER - SN 014-0014
 STA. 140+85 20' RT ELEV. 436.686
- BM4**
 RR SPIKE IN POWER POLE
 @ SOUTH SIDE OF AGGREGATE RD
 +0.12 MI ALONG AGGREGATE UNNAMED RD
 FROM NW CORNER OF IL 127 BRIDGE
 OVER KASKASKIA RIVER
 STA. 133+45 154' RT ELEV. 421.430



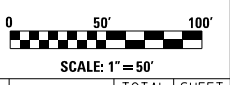
PC STA. 142+31.85
 N: 695497.9241
 E: 524671.9386



IL 127 STA. 143+57.83
 REL JONATHAN RD STA. 10+90.14
 N: 695390.6484
 E: 524737.9097



PT STA. 146+39.59
 N: 695175.9724
 E: 524919.5988



USER NAME = Plotted by Scott	DESIGNED - RWK	REVISED -
	DRAWN - RWK	REVISED -
PLOT SCALE = 100.0000' / in.	CHECKED - SEW	REVISED -
PLOT DATE =	DATE - 2-1-2013	REVISED -

**STATE OF ILLINOIS
 DEPARTMENT OF TRANSPORTATION**

**ALIGNMENT, TIES & BENCHMARKS
 ILLINOIS ROUTE 127**

SCALE: 1"=50' SHEET NO. 1 OF 4 SHEETS STA. N/A TO STA. N/A

F.A.P. R.E.	SECTION	COUNTY	TOTAL SHEETS	SHEET NO.
42	1-IBR-2	CLINTON	159	25
CONTRACT NO. 76479				
ILLINOIS FED. AID PROJECT				