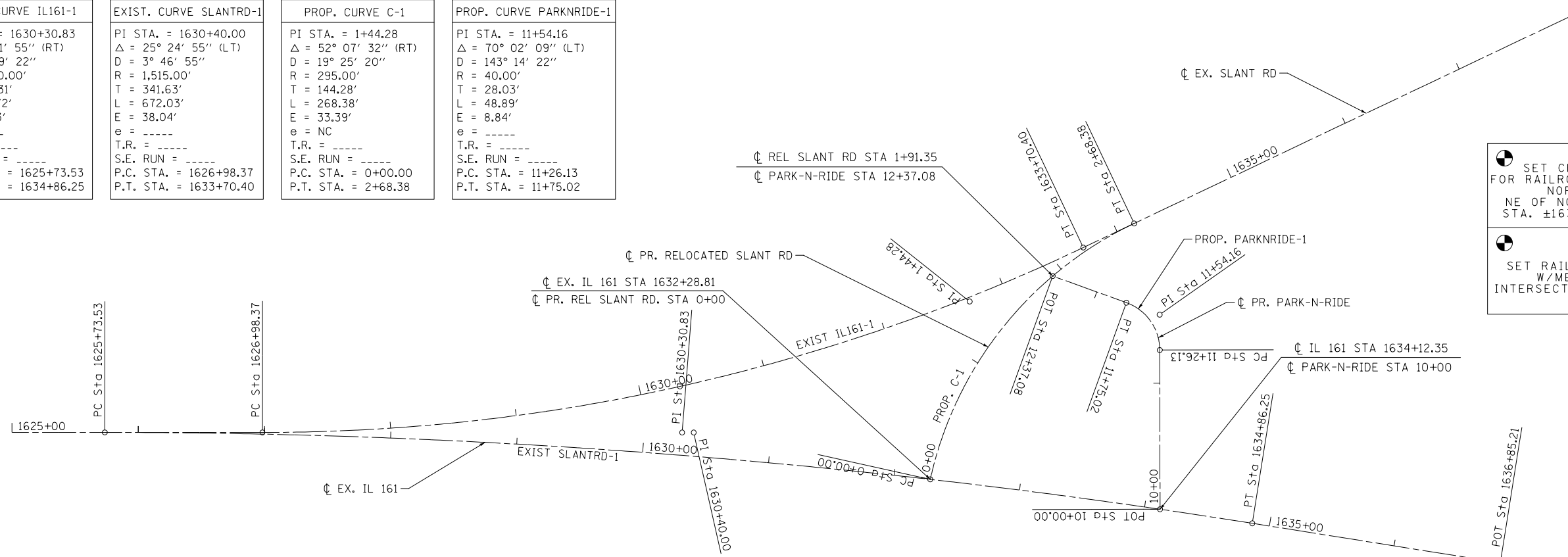


EXIST. CURVE IL161-1	EXIST. CURVE SLANTRD-1	PROP. CURVE C-1	PROP. CURVE PARKNRIDE-1
PI STA. = 1630+30.83 Δ = 9° 01' 55" (RT) D = 0° 59' 22" R = 5,790.00' T = 457.31' L = 912.72' E = 18.03' e = ---- T.R. = ---- S.E. RUN = ---- P.C. STA. = 1625+73.53 P.T. STA. = 1634+86.25	PI STA. = 1630+40.00 Δ = 25° 24' 55" (LT) D = 3° 46' 55" R = 1,515.00' T = 341.63' L = 672.03' E = 38.04' e = ---- T.R. = ---- S.E. RUN = ---- P.C. STA. = 1626+98.37 P.T. STA. = 1633+70.40	PI STA. = 1+44.28 Δ = 52° 07' 32" (RT) D = 19° 25' 20" R = 295.00' T = 144.28' L = 268.38' E = 33.39' e = NC T.R. = ---- S.E. RUN = ---- P.C. STA. = 0+00.00 P.T. STA. = 2+68.38	PI STA. = 11+54.16 Δ = 70° 02' 09" (LT) D = 143° 14' 22" R = 40.00' T = 28.03' L = 48.89' E = 8.84' e = ---- T.R. = ---- S.E. RUN = ---- P.C. STA. = 11+26.13 P.T. STA. = 11+75.02



**BM106**  
SET CHISELED "X" ON SE STUD FOR RAILROAD CROSSING SIGN & LIGHTS NORTH OF SLANT RD AND NE OF NORFOLK SOUTHERN RAILROAD STA. ±1634+64 17' LT ELEV. 461.745

**BM107**  
SET RAILROAD SPIKE IN LIGHT POLE W/METER ON NORTH SIDE OF INTERSECTION OF SLANT RD AND IL 161 ELEV. 459.295

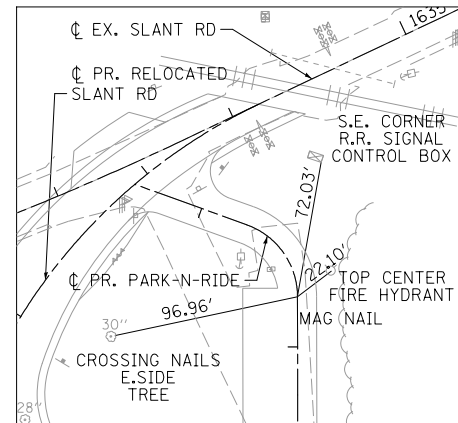
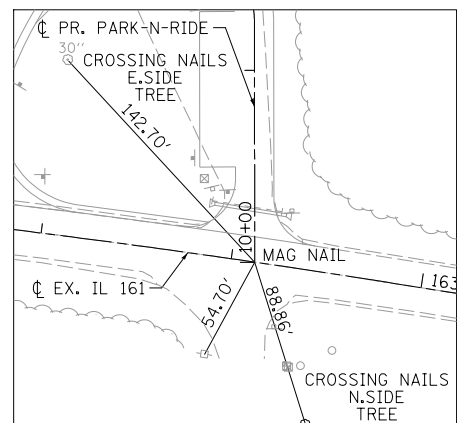
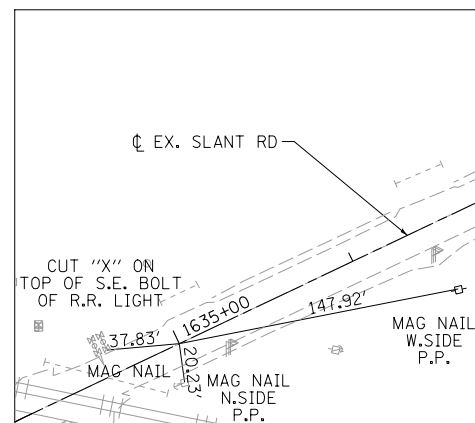
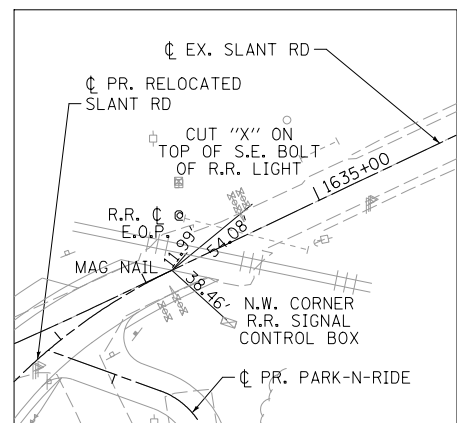
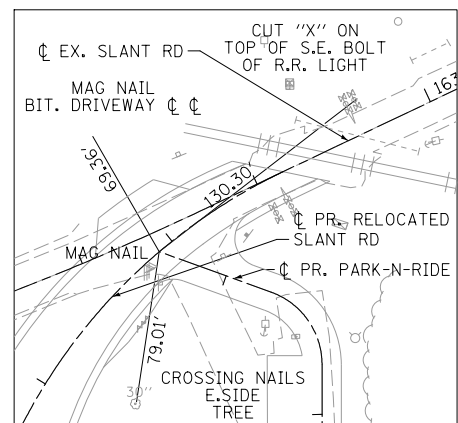
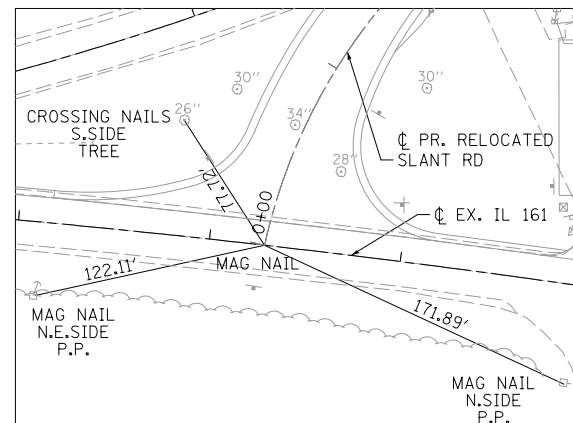
IL 161 STA. 1632+28.81  
RELOCATED SLANT RD STA. 0+00.00  
N: 681552.4266  
E: 502579.6409

RELOCATED SLANT RD STA. 1+91.35  
PARK-N-RIDE STA. 12+37.08  
N: 681713.4888  
E: 502676.6290

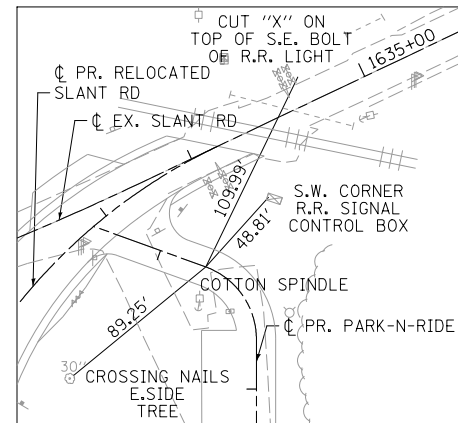
PT STA. 2+68.38 (RELOCATED SLANT RD)  
N: 681755.1920  
E: 502741.1372

POT STA. 1635+00.00 (EX. SLANT RD)  
N: 681791.6528  
E: 502817.9201

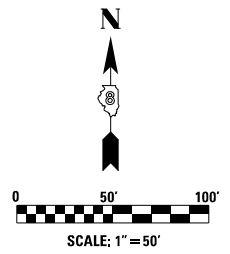
IL 161 STA. 1634+12.35  
PARK-N-RIDE STA. 10+00.00  
N: 681528.7270  
E: 502761.6341



PC STA. 11+26.13 (PARK-N-RIDE)  
N: 681654.8551  
E: 502761.4078



PT STA. 11+75.02 (PARK-N-RIDE)  
N: 681692.4041  
E: 502734.9977



USER NAME = Plotted by Scott	DESIGNED - RWK	REVISED -
PLOT SCALE = 100.0000' / in.	DRAWN - RWK	REVISED -
PLOT DATE =	CHECKED - SEW	REVISED -
	DATE - 2-1-2013	REVISED -

F.A.P. RTE.	SECTION	COUNTY	TOTAL SHEETS	SHEET NO.
42	1-1BR-2	CLINTON	159	27
CONTRACT NO. 76479				
ILLINOIS FED. AID PROJECT				