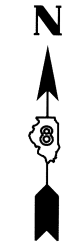
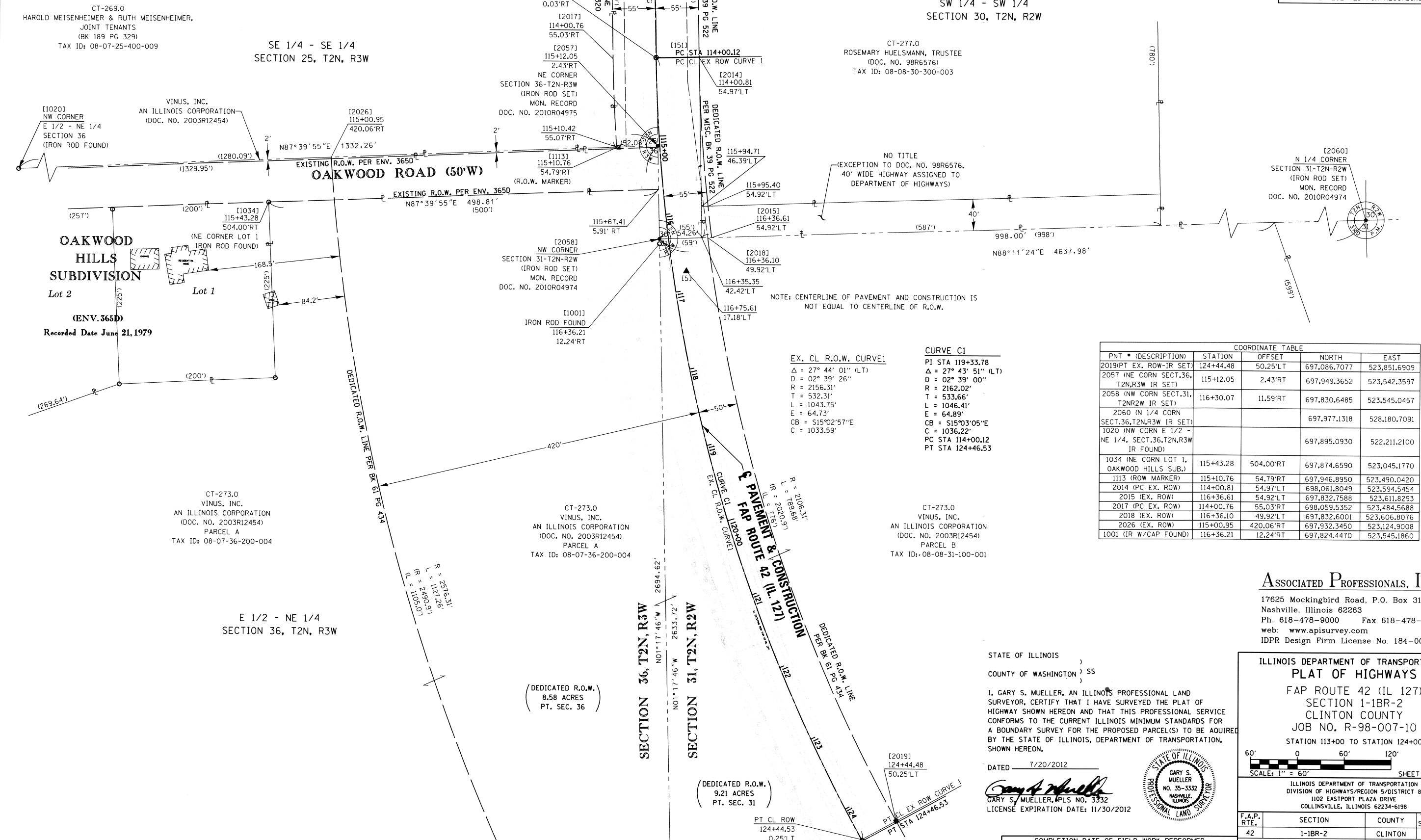


PART OF THE W 1/2 OF NW 14 OF SECTION 31, T.2 N., R.2 W., & PART OF THE E 1/2, NE 1/4 OF SECTION 36, T.2 N., R.3 W. OF THE 3RD P.M., CLINTON COUNTY, ILLINOIS

SEE LEGENDS, TOPOGRAPHIC STATEMENT, SURVEYORS NOTES) AND BASIS OF COORDINATES & BEARINGS STATEMENT ON SHEET 2
SEE COORDINATE TABLES ON SHEET 2 FOR I.D.O.T. PROVIDED CONTROL AND ALIGNMENTS.



SPACE RESERVED FOR RECORDING OFFICER



NOTE: CENTERLINE OF PAVEMENT AND CONSTRUCTION IS NOT EQUAL TO CENTERLINE OF R.O.W.

EX. CL R.O.W. CURVE 1
 $\Delta = 27^\circ 44' 01''$ (LT)
 $D = 02^\circ 39' 26''$
 $R = 2156.31'$
 $T = 532.31'$
 $L = 1043.75'$
 $E = 64.73'$
 $CB = S15^\circ 02' 57'' E$
 $C = 1033.59'$

CURVE C1
 $PI STA 119+33.78$
 $\Delta = 27^\circ 43' 51''$ (LT)
 $D = 02^\circ 39' 00''$
 $R = 2162.02'$
 $T = 533.66'$
 $L = 1046.41'$
 $E = 64.89'$
 $CB = S15^\circ 03' 05'' E$
 $C = 1036.22'$
 $PC STA 114+00.12$
 $PT STA 124+46.53$

COORDINATE TABLE				
PNT # (DESCRIPTION)	STATION	OFFSET	NORTH	EAST
2019 (PT EX. ROW-IR SET)	124+44.48	50.25'LT	697,086.7077	523,851.6909
2057 (NE CORN SECT.36, T2N,R3W IR SET)	115+12.05	2.43'RT	697,949.3652	523,542.3597
2058 (NW CORN SECT.31, T2NR2W IR SET)	116+30.07	11.59'RT	697,830.6485	523,545.0457
2060 (N 1/4 CORN SECT.36,T2N,R3W IR SET)			697,977.1318	528,180.7091
1020 (NW CORN E 1/2 - NE 1/4, SECT.36,T2N,R3W IR FOUND)			697,895.0930	522,211.2100
1034 (NE CORN LOT 1, OAKWOOD HILLS SUB.)	115+43.28	504.00'RT	697,874.6590	523,045.1770
1113 (ROW MARKER)	115+10.76	54.79'RT	697,946.8950	523,490.0420
2014 (PC EX. ROW)	114+00.81	54.97'LT	698,061.8049	523,594.5454
2015 (EX. ROW)	116+36.61	54.92'LT	697,832.7588	523,611.8293
2017 (PC EX. ROW)	114+00.76	55.03'RT	698,059.5352	523,484.5688
2018 (EX. ROW)	116+36.10	49.92'LT	697,832.6001	523,606.8076
2026 (EX. ROW)	115+00.95	420.06'RT	697,932.3450	523,124.9008
1001 (IR W/CAP FOUND)	116+36.21	12.24'RT	697,824.4470	523,545.1860

ASSOCIATED PROFESSIONALS, INC.
 17625 Mockingbird Road, P.O. Box 311
 Nashville, Illinois 62263
 Ph: 618-478-9000 Fax 618-478-9001
 web: www.apisurvey.com
 IDPR Design Firm License No. 184-001303

STATE OF ILLINOIS)
 COUNTY OF WASHINGTON) SS
 I, GARY S. MUELLER, AN ILLINOIS PROFESSIONAL LAND SURVEYOR, CERTIFY THAT I HAVE SURVEYED THE PLAT OF HIGHWAY SHOWN HEREON AND THAT THIS PROFESSIONAL SERVICE CONFORMS TO THE CURRENT ILLINOIS MINIMUM STANDARDS FOR A BOUNDARY SURVEY FOR THE PROPOSED PARCEL(S) TO BE ACQUIRED BY THE STATE OF ILLINOIS, DEPARTMENT OF TRANSPORTATION, SHOWN HEREON.
 DATED 7/20/2012
 GARY S. MUELLER, PLS NO. 3332
 LICENSE EXPIRATION DATE: 11/30/2012



ILLINOIS DEPARTMENT OF TRANSPORTATION
PLAT OF HIGHWAYS
 FAP ROUTE 42 (IL 127)
 SECTION 1-1BR-2
 CLINTON COUNTY
 JOB NO. R-98-007-10
 STATION 113+00 TO STATION 124+00

SCALE: 1" = 60'

SHEET 3 OF 7

F.A.P. RTE.	SECTION	COUNTY	TOTAL SHEETS	SHEET NO.
42	1-1BR-2	CLINTON	159	57

ILLINOIS DEPARTMENT OF TRANSPORTATION
 DIVISION OF HIGHWAYS/REGION 5/DISTRICT 8
 1102 EASTPORT PLAZA DRIVE
 COLLINGSVILLE, ILLINOIS 62234-6198

FED. ROAD DIST. NO. 8 ILLINOIS FED. AID PROJECT