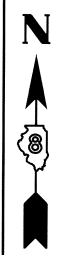
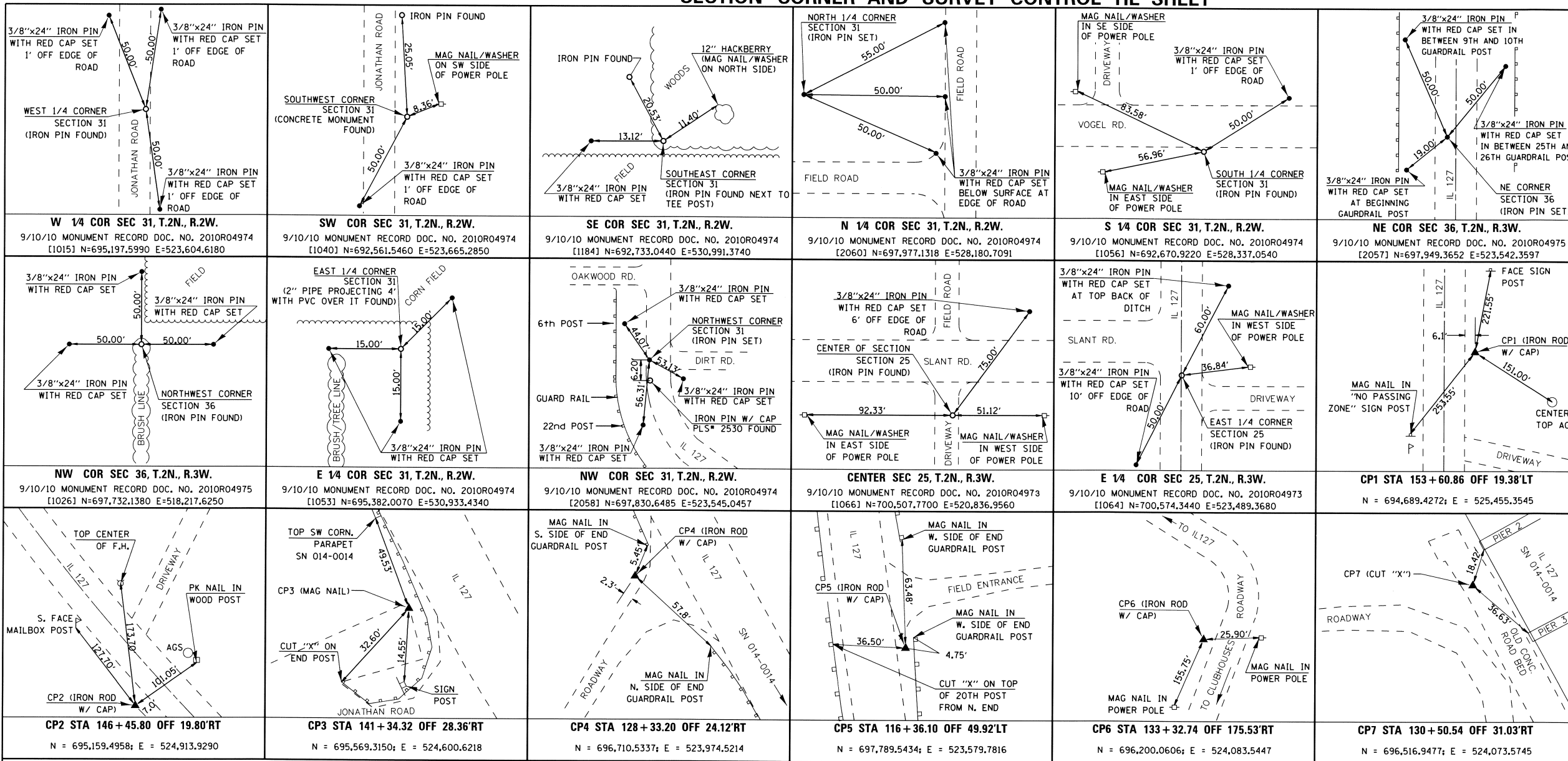


**SECTION CORNER AND SURVEY CONTROL TIE SHEET**



SPACE RESERVED FOR RECORDING OFFICER

STATE OF ILLINOIS )  
 COUNTY OF WASHINGTON ) SS  
 I, GARY S. MUELLER, AN ILLINOIS PROFESSIONAL LAND SURVEYOR, CERTIFY THAT I HAVE SURVEYED THE PLAT OF HIGHWAY SHOWN HEREON AND THAT THIS PROFESSIONAL SERVICE CONFORMS TO THE CURRENT ILLINOIS MINIMUM STANDARDS FOR A BOUNDARY SURVEY FOR THE PROPOSED PARCEL(S) TO BE ACQUIRED BY THE STATE OF ILLINOIS, DEPARTMENT OF TRANSPORTATION, SHOWN HEREON.  
 DATED 7/20/2012  
 GARY S. MUELLER, PLS NO. 3332  
 LICENSE EXPIRATION DATE: 11/30/2012



COORDINATE TABLE				
PNT # (DESCRIPTION)	STATION	OFFSET	NORTH	EAST
1015 (W 1/4 CORN SECT.31 IR FOUND)			695,197.5990	523,604.6180
1020 (NW CORN E 1/2 - NE 1/4, SECT.36,T2N,R3W IR FOUND)			697,895.0930	522,211.2100
1026 (NW CORN SECT.36, T2N,R3W IR FOUND)			697,732.1380	518,217.6250
1031 (IRON PIPE FOUND)			694,058.1340	530,961.0060
1038 (SW CORN SE 1/4-SW 1/4 SECT.25,T2N,R2W IR FOUND)			697,786.5290	519,548.6870
1040 (SW CORN SECT.31,T2N,R2W CONC. MON. FOUND)			692,561.5460	523,665.2850
1043 (SW CORN E 1/2-SE 1/4 SECT.36,T2N,R2W IR FOUND)			692,522.6270	522,319.3230
1045 (IR FOUND)			692,620.1510	526,001.1070
1046 (IR FOUND)	161+36.91	49.79'RT	692,620.1510	526,001.1070
1053 (E 1/4 CORNER SECT.31,T2N,R2W IRON PIPE FOUND)			695,382.0070	530,933.4340
1056 (S 1/4 CORNER SECT.31,T2N,R2W IR FOUND)			692,670.9220	528,337.0540
1059 (IR FOUND)			693,374.6820	522,302.0780

COORDINATE TABLE				
PNT # (DESCRIPTION)	STATION	OFFSET	NORTH	EAST
1064 (E 1/4 CORNER SECT.25,T2N,R2W IR FOUND)			700,574.3440	523,489.3680
1065 (NE CORN NW 1/4-SE 1/4 SECT.25,T2N,R2W IR FOUND)			700,541.0570	522,163.1620
1066 (CENTER SECT.25, T2N,R3W IR FOUND)			700,507.7700	520,836.9560
1067 (NW CORN SW 1/4-SE 1/4 SECT.25,T2N,R2W IR FOUND)			699,174.2891	520,858.3521
1070 (NW CORN SE 1/4-SE 1/4 SECT.25,T2N,R2W IR FOUND)			699,217.2310	522,186.6700
1071 (NW CORN SE 1/4-SW 1/4 SECT.25,T2N,R2W IR FOUND)			699,130.4850	519,532.2570
1184 (SE CORN SECT.31, T2N,R2W IR FOUND)			692,733.0440	530,991.3740
1194 (CONC. MON. FOUND)			697,961.4980	527,685.9560
2057 (NE CORN SECT.36, T2N,R3W IR SET)	115+12.05	2.43'RT	697,949.3652	523,542.3597
2058 (NW CORN SECT.31, T2NR2W IR SET)	116+30.07	11.59'RT	697,830.6485	523,545.0457
2060 (N 1/4 CORN SECT.31,T2N,R2W IR SET)			697,977.1318	528,180.7091

**ASSOCIATED PROFESSIONALS, INC.**  
 17625 Mockingbird Road, P.O. Box 311  
 Nashville, Illinois 62263  
 Ph. 618-478-9000 Fax 618-478-9001  
 web: www.apisurvey.com  
 IDPR Design Firm License No. 184-001303

COMPLETION DATE OF FIELD WORK PERFORMED  
 LAND SURVEY: 8/31/2010 ROW STAKING: 5/24/2012

ILLINOIS DEPARTMENT OF TRANSPORTATION  
**PLAT OF HIGHWAYS**  
 FAP ROUTE 42 (IL 127)  
 SECTION 1-1BR-2  
 CLINTON COUNTY  
 JOB NO. R-98-007-10  
 SECTION CORNER AND SURVEY CONTROL TIE SHEET

NOT TO SCALE SHEET 7 OF 7

ILLINOIS DEPARTMENT OF TRANSPORTATION  
 DIVISION OF HIGHWAYS/REGION 5/DISTRICT 8  
 1102 EASTPORT PLAZA DRIVE  
 COLLINSVILLE, ILLINOIS 62234-6198

F.A.P. RTE.	SECTION	COUNTY	TOTAL SHEETS	SHEET NO.
42	1-1BR-2	CLINTON	159	61
				CONTRACT NO. 76479