

NOTES:

SECTION CORNERS SHALL BE SET IN ACCORDANCE WITH SPECIAL PROVISION.

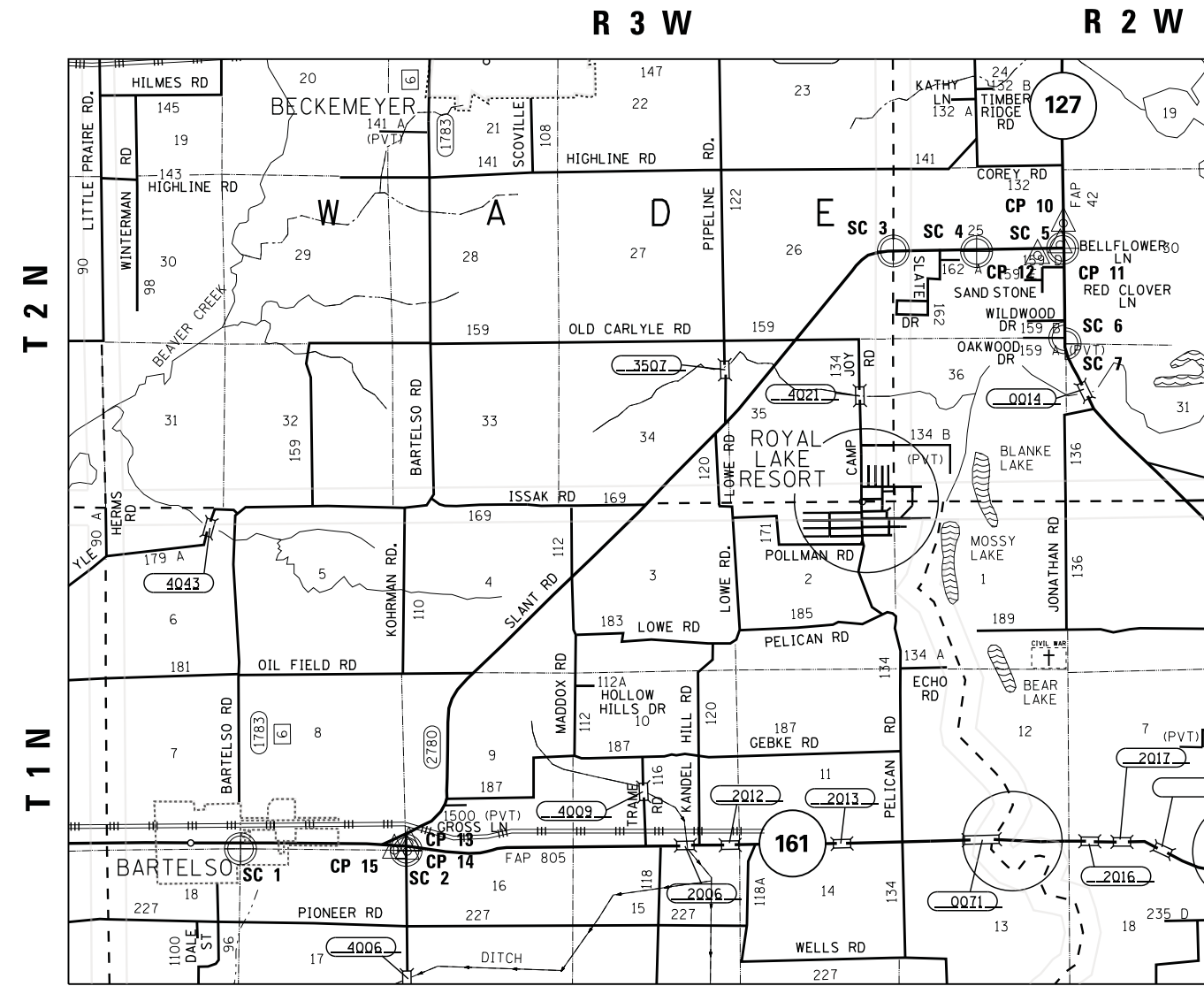
BASIS OF COORDINATES - ILLINOIS STATE PLANE, WEST ZONE
 COORDINATE TYPE: GROUND
 ELLIPSOID: WGS 84
 STATE PLANE ZONE: ILLINOIS WEST NAD 83 ('07)
 (EASTINGS HAVE BEEN TRUNCATED BY 2,000,000)



CONTROL POINT COORDINATE TABLE			
POINT NO.	NORTH	EAST	DESCRIPTION
CP 10	701,331.9466	523,521.7970	IRON PIN W/ ALUMINUM CAP
CP 11	700,615.9324	523,508.5221	IRON PIN W/ ALUMINUM CAP
CP 12	700,577.7150	522,664.7945	IRON PIN W/ ALUMINUM CAP
CP 13	681,819.4393	502,838.1132	IRON PIN W/ ALUMINUM CAP
CP 14	681,560.8261	502,789.8918	IRON PIN W/ ALUMINUM CAP
CP 15	681,587.7032	502,380.2211	IRON PIN W/ ALUMINUM CAP

SECTION CORNER COORDINATE TABLE				
POINT NO.	NORTH	EAST	DESCRIPTION	CORNER
SC 1 (102)	681,591.3411	497,475.8988	BRASS PLUG	NW COR SEC 17-1-3
SC 2 (100)	681,589.4923	502,753.6568	BRASS PLUG	NE COR SEC 17-1-3
SC 3 (107)	700,440.6164	518,195.5598	IRON PIN	W 1/4 COR SEC 25-2-3
SC 4 (1066)	700,507.7700	520,836.9560	IRON PIN	CENTER SEC 25-2-3
SC 5 (1064)	700,574.3440	523,489.3680	IRON PIN	E 1/4 COR SEC 25-2-3
SC 6 (2057)	697,949.3652	523,542.3597	IRON PIN	NE COR SEC 36-2-3
SC 7 (2058)	697,830.6485	523,545.0457	IRON PIN	NW COR SEC 31-2-2

SC 6 & SC 7 INFORMATION FROM PROJECT R-98-007-10
 UNABLE TO FIELD VERIFY AS OF 12-11-12.



CONTROL POINT / SECTION CORNER MAP
 NOT TO SCALE