

EAST CURB LINE

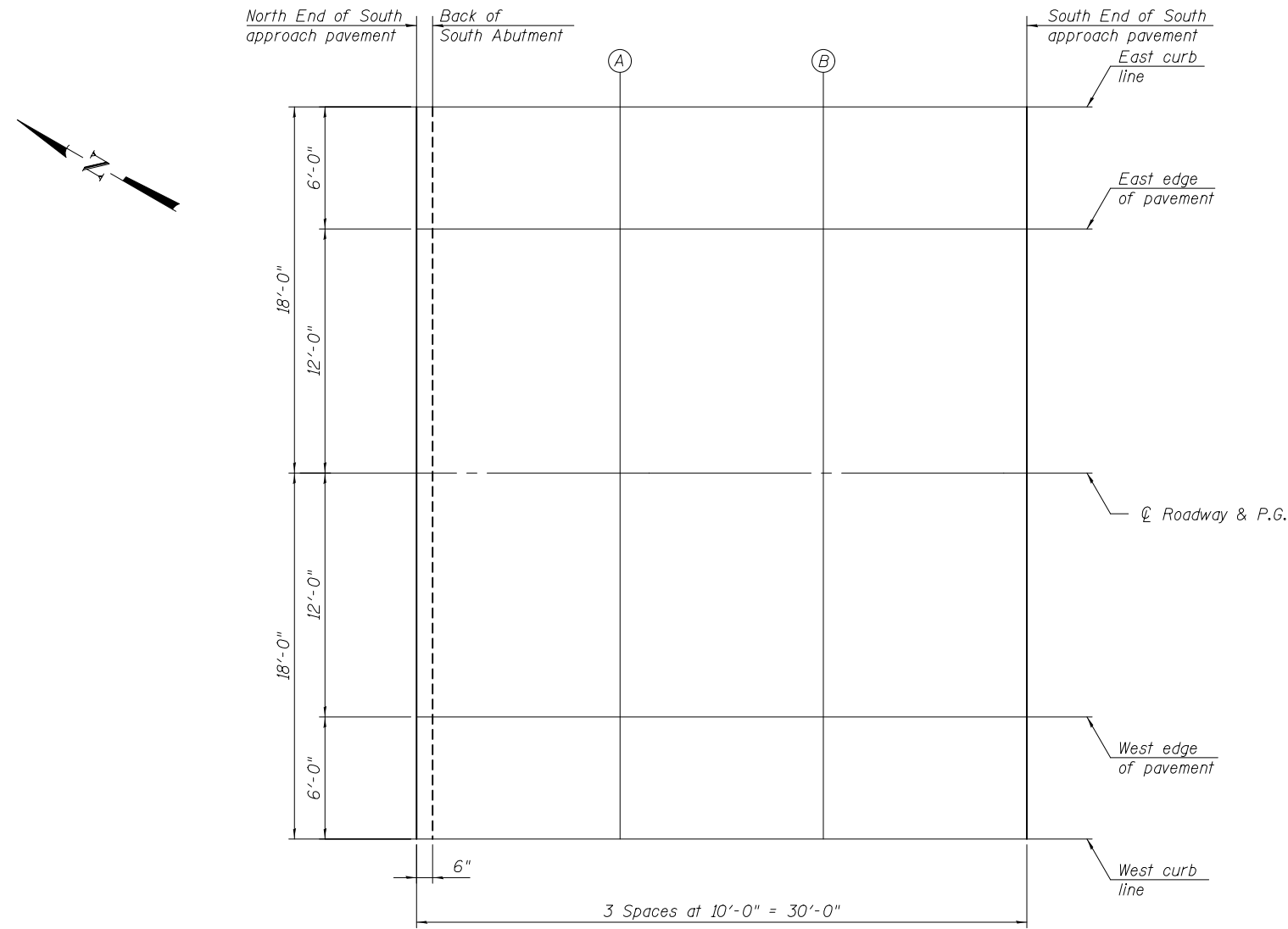
Location	Station	Offset	Theoretical Grade Elevations
N. End South Appr. Pav't.	140+82.77	-18.00	435.99
A	140+92.77	-18.00	435.94
B	141+02.77	-18.00	435.89
S. End South Appr. Pav't.	141+12.77	-18.00	435.85

EAST EDGE OF PAVEMENT

Location	Station	Offset	Theoretical Grade Elevations
N. End South Appr. Pav't.	140+82.77	-12.00	436.12
A	140+92.77	-12.00	436.07
B	141+02.77	-12.00	436.02
S. End South Appr. Pav't.	141+12.77	-12.00	435.97

℄ ROADWAY AND P.G.

Location	Station	Offset	Theoretical Grade Elevations
N. End South Appr. Pav't.	140+82.77	0.00	436.31
A	140+92.77	0.00	436.26
B	141+02.77	0.00	436.21
S. End South Appr. Pav't.	141+12.77	0.00	436.16



PLAN

WEST EDGE OF PAVEMENT

Location	Station	Offset	Theoretical Grade Elevations
N. End South Appr. Pav't.	140+82.77	12.00	436.12
A	140+92.77	12.00	436.07
B	141+02.77	12.00	436.04
S. End South Appr. Pav't.	141+12.77	12.00	436.03

WEST CURB LINE

Location	Station	Offset	Theoretical Grade Elevations
N. End South Appr. Pav't.	140+82.77	18.00	435.99
A	140+92.77	18.00	435.94
B	141+02.77	18.00	435.91
S. End South Appr. Pav't.	141+12.77	18.00	435.91



USER NAME =	DESIGNED - JTH	REVISED
	CHECKED - RLM	REVISED
PLOT SCALE =	DRAWN - PRC	REVISED
PLOT DATE = 2/1/2013	CHECKED - JTH	REVISED

**STATE OF ILLINOIS
DEPARTMENT OF TRANSPORTATION**

**TOP OF SOUTH APPROACH SLAB ELEVATIONS
STRUCTURE NO. 014-0033**

SHEET NO. 13 OF 61 SHEETS

F.A.P. RTE.	SECTION	COUNTY	TOTAL SHEETS	SHEET NO.
42	1-1BR-2	CLINTON	159	82
CONTRACT NO. 76479				
ILLINOIS FED. AID PROJECT				